

Exhibit F

MLS SOCCER REDEVELOPMENT

ST. PAUL

Minnesota United FC

4050 Olson Memorial Hwy 295
Minneapolis, MN 55422
(763)331-8777



PLANNING
CIVIL ENGINEERING
LAND SURVEYING
LANDSCAPE ARCHITECTURE
ENVIRONMENTAL

7200 Hemlock Lane, Suite 300
Maple Grove, MN 55369
763.424.5505
www.loucksinc.com

CADD QUALIFICATION

CADD files prepared by the Consultant for this project are instruments of the Consultant professional services for use solely with respect to this project. These CADD files shall not be used on other projects, for additions to this project, or for completion of this project by others without written approval by the Consultant. With the Consultant's approval, others may be permitted to obtain copies of the CADD drawing files for information and reference only. All intentional or unintentional revisions, additions, or deletions to these CADD files shall be made at the full risk of that party making such revisions, additions or deletions and that party shall hold harmless and indemnify the Consultant from any & all responsibilities, claims, and liabilities.

SUBMITTAL/REVISIONS

7/6/16 DRAWING ISSUED
3/27/19 CURRENT PLAT

PROFESSIONAL SIGNATURE

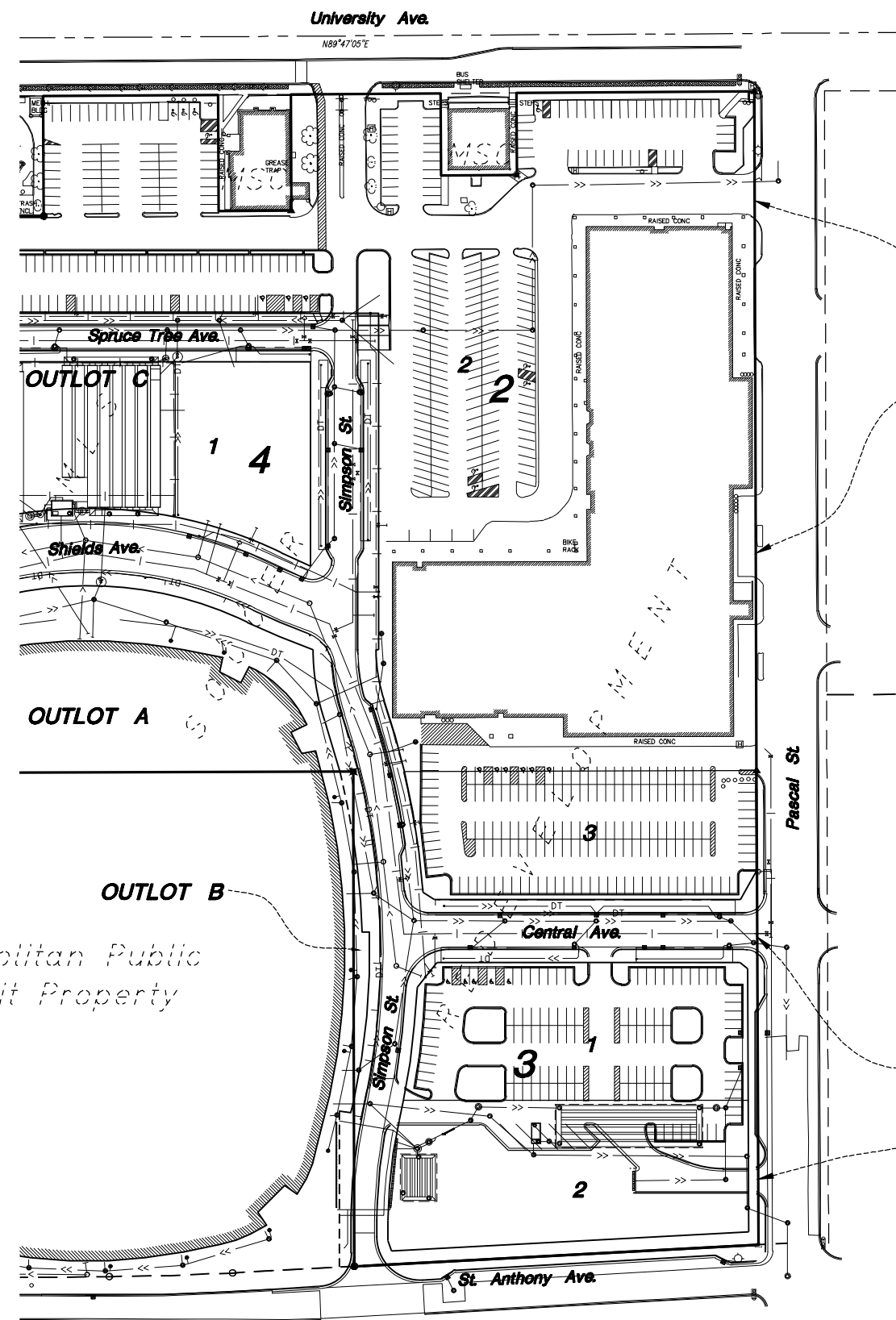
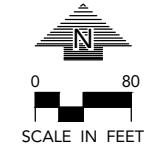
I hereby certify that this survey, plan or report was prepared by me or under my direct supervision and that I am a duly Licensed Land Surveyor under the laws of the State of Minnesota.

Paul J. McGinley
License No. Paul J. McGinley - LS 16099
Date 7/6/16

QUALITY CONTROL

Loucks Project No. 16-028B
Project Lead PJM
Drawn By SFM
Checked By PJM
Field Crew BS

VICINITY MAP



SURVEY LEGEND

⊗	CATCH BASIN	---	STORM SEWER
⊙	STORM MANHOLE	->	SANITARY SEWER
○	SANITARY MANHOLE	—	WATERMAIN
⊕	AREA DRAIN	—S	SANITARY SEWER SERVICE
⊖	HYDRANT	—W	WATER SERVICE
⊗	GATE VALVE	—PR	PRIVATE WATER
⊙	POWER POLE	—ELE	UNDERGROUND ELECTRIC
⊙	LIGHT POLE	—FO	UNDERGROUND FIBER OPTIC
—	GUY WIRE	—GAS	UNDERGROUND GAS
⊕	ELECTRIC TRANSFORMER	—TEL	UNDERGROUND TELEPHONE
⊕	TELEPHONE PEDESTAL	—UTL	UNDERGROUND UTILITY
⊕	ELECTRIC MANHOLE	—OH	OVERHEAD UTILITY
⊕	GAS VALVE	—TRFC	UNDERGROUND TRAFFIC
⊕	TELEPHONE MANHOLE	—DT	DRAIN TILE
⊕	UTILITY MANHOLE	—FM	FORCE MAIN
⊕	ELECTRIC METER	⊕	TRAFFIC SIGNAL
⊕	GAS METER		
⊕	HAND HOLE		
⊕	ROOF DRAIN		
⊕	ELECTRIC OUTLET		
⊕	FIRE CONNECTION		

"MSC" DENOTES PLAT OF MIDWAY SHOPPING CENTER
"MLS" DENOTES PLAT OF MLS SOCCER REDEVELOPMENT

Doc. No. 408734

Easements for Slopes, Cuts and Fills
Condemned by city of St. Paul in 1959 for construction of Pascal Street

Legal Description of Easement to be Released

Easements for slopes, cuts and fills in the grading, curbing and paving of Pascal Street, per Document No. 408734, to the extent shown on the plans on file in the office of the Commissioner of Public Works, along, and abutting the west right-of-way line of Pascal Street from University Avenue to St. Anthony Avenue.

NOTE: Staff in Public Works at the City of St. Paul informs us that the City will always release this type of easement upon request.

(Trunk Highway No. 94)

EASEMENT RELEASE EXHIBIT
Doc # 408734

Plotted: 03/27/2019 9:9 AM W:\2016\16028\CADD DATA\SURVEY\dwg Sheet Files\Vacation_exhibits\16028-EXH_VAC