

## Jules Bowman

---

**From:** Lou Frillman  
**Sent:** Tuesday, September 18, 2012 2:32 PM  
**To:** Jules Bowman  
**Subject:** FW: 461 Holly - Spiral Stair alternative  
**Attachments:** 461 holly - spiral stair spec 05.07.12.pdf; 461 Holly-spiral stair plans-5-07-12.pdf

2 copy pdf and email

---

**From:** Lou Frillman  
**Sent:** Friday, September 14, 2012 5:31 AM  
**To:** Louis W Frillman ([lfrillman@marquetteadvisors.com](mailto:lfrillman@marquetteadvisors.com))  
**Subject:** FW: 461 Holly - Spiral Stair alternative

**From:** William Madden Jr [<mailto:whmadden@gmail.com>]  
**Sent:** Wednesday, June 06, 2012 8:40 AM  
**To:** Jim Bloom  
**Cc:** Lou Frillman; Carol Frillman; leanna.shaff  
**Subject:** Fwd: 461 Holly - Spiral Stair alternative

Dear Jim,

461 Holly Stair Alternative:

I left a message on your voice mail yesterday asking for your review of these preliminary plans proposing a 2'6" wide spiral stair solution in lieu of the switchback stair, originally sent to you on 5/7/12. Please see attached. We appreciate your review.

Thanks much and Best Regards,

-Bill

### William H Madden Jr AIA LEED AP

**MADDEN** ARCHITECTS LLC

2203 Como Avenue  
Saint Paul, Minnesota 55108  
P: 651.328.4571  
[WHMadden@gmail.com](mailto:WHMadden@gmail.com)

The information contained in this electronic communication, as well as in any attachments, contains confidential or privileged information and may constitute non-public information, and is intended solely for use by the addressee(s). All information in the attachments are copyrighted - Madden Architects LLC all rights reserved. The recipient shall not copy, print, modify, forward, present any attached information to others, or alter attachments without prior written consent from the sender. Any other use, disclosure, dissemination, distribution or copying of this electronic communication is strictly prohibited, may constitute an interference with Madden Architects LLC confidential business relationships and may be unlawful. If you received this communication in error, please notify me immediately and permanently delete the original and any electronic or printed copies of this electronic communication (including any attachments).

----- Forwarded message -----

**From:** William Madden Jr <[whmadden@gmail.com](mailto:whmadden@gmail.com)>  
**Date:** Mon, May 7, 2012 at 6:46 PM  
**Subject:** 461 Holly - Spiral Stair alternative  
**To:** Jim Bloom <[jim.bloom@ci.stpaul.mn.us](mailto:jim.bloom@ci.stpaul.mn.us)>  
**Cc:** Lou Frillman <[LFrillman@marquetteadvisors.com](mailto:LFrillman@marquetteadvisors.com)>, Carol Frillman <[carol\\_mcclure@att.net](mailto:carol_mcclure@att.net)>

Dear Jim,

Please see the spiral stair alternative to the straight run stair. We seek this solution as an acceptable alternative to the straight run stair.

Thanks and Best Regards,

-Bill 651-328-4571

**William H Madden Jr AIA LEED AP**

**MADDEN ARCHITECTS LLC**

2203 Como Avenue  
Saint Paul, Minnesota 55108  
P: 651.328.4571  
WHMadden@gmail.com

The information contained in this electronic communication, as well as in any attachments, contains confidential or privileged information and may constitute non-public information, and is intended solely for use by the addressee(s). All information in the attachments are copyrighted - Madden Architects LLC all rights reserved. The recipient shall not copy, print, modify, forward, present any attached information to others, or alter attachments without prior written consent from the sender. Any other use, disclosure, dissemination, distribution or copying of this electronic communication is strictly prohibited, may constitute an interference with Madden Architects LLC confidential business relationships and may be unlawful. If you received this communication in error, please notify me immediately and permanently delete the original and any electronic or printed copies of this electronic communication (including any attachments).



461 HOLLY

MAY 7, 2012

1-800-513-7427



FOR APPROVAL - PROPOSED  
EVAL

PROPOSED PREFAB. SPIRAL STAIR ALTERNATE

60

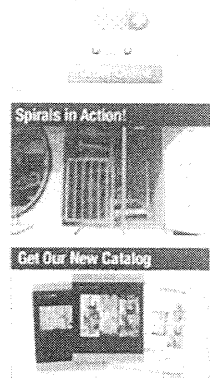
Metal Spiral Stairs

- Metal Stair Overview
- Installation
- Coloring
- Accessories
- Windward Troops
- Interior Case Colors
- Combustion Turn
- Floating Straight Stair
- Steel Spiral Gallery
- How to Build a Spiral
- Configure Your Layout
- Installation Manual
- Installation Videos
- Stair Dimensions
- Finishing Codes
- Staircases
- How to Spiral R/As
- Handrailing
- Metal Stair Warranties
- Shipping
- Custom Stairs
- 3-1/2" Spiral Stairs
- Automatic Spiral Stairs

Metal Spiral Stair Kit Dimensions

Diameter	Minimum Finished Opening	Clear Walk Space Between Pole and Rail	Square Landing Size	Degree of Tread Rotation	Center Pole Diameter	Base Plate Diameter	Standard Handrail Width
3'6" Standard	3'-8" x 3'-8"	1'-6"	1'-10" x 1'-10"	30°	3 1/2"	10"	1 1/4"
4'0" Standard	4'-2" x 4'-2"	1'-9"	2'-1" x 2'-1"	30°	3 1/2"	10"	1 1/4"
4'6" Standard	4'-8" x 4'-8"	2'-0"	2'-4" x 2'-4"	30°	3 1/2"	10"	1 1/4"
5'0" Standard	5'-2" x 5'-2"	2'-2 3/8"	2'-7" x 2'-7"	22 1/2°	3 1/2"	10"	1 1/4"
5'6" Standard	5'-8" x 5'-8"	2'-5 3/8"	2'-10" x 2'-10"	22 1/2°	3 1/2"	10"	1 1/4"
6'0" Standard	6'-2" x 6'-2"	2'-8 3/8"	3'-1" x 3'-1"	22 1/2°	3 1/2"	10"	1 1/4"
6'6" Standard	6'-8" x 6'-8"	2'-11 1/8"	3'-4" x 3'-4"	22 1/2°	4"	10"	1 1/4"
7'0" Standard	7'-2" x 7'-2"	3'-2 1/8"	3'-7" x 3'-7"	22 1/2°	4"	10"	1 1/4"
One-Half Turn	3'-0" x 5'-8"	2'-5 3/8"	N/A	18°	3 1/2"	10"	1 1/4"
Combination-4	3'-0" x 6'-0"	2'-5 3/8"	N/A	18°	3 1/2"	10"	1 1/4"
Combination-5	3'-0" x 6'-9"	2'-5 3/8"	N/A	18°	3 1/2"	10"	1 1/4"

Order a Stair Kit Online



PROPOSED STAIR

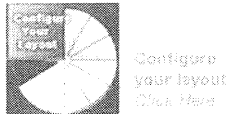
- Get a Stair Kit Price Quote
- Order a Stair Kit Online
- Get Our Catalog
- About The Iron Shop
- How to Build a Spiral
- Customer Showcase
- Testimonials
- Customer Support
- Showroom Locator
- Contact Us

For more information see our price list and layout guide (pdf format)

Metal Floating Straight Stair Kit Dimensions:

Floor-to-Floor Height	Risers	Stair Projection Series 42	Stair Projection Series 45
7'-6"	12	7'-10"	7'-1"
7'-7"	12	7'-11 1/8"	7'-2"
7'-8"	12	8'-0 1/4"	7'-3"
7'-9"	12	8'-1 3/8"	7'-4"
7'-10"	12	8'-2 1/2"	7'-5"
7'-11"	12	8'-3 5/8"	7'-6"
8'-0"	12	8'-4 3/4"	7'-7"
8'-1"	12	8'-5 7/8"	7'-8"
8'-2"	12	8'-7"	7'-9"
8'-3"	12	8'-8 1/8"	7'-10"
8'-4"	12	8'-9 1/4"	7'-11"
8'-5"	13	8'-10 3/8"	8'-0"
8'-6"	13	8'-11 1/2"	8'-1"
8'-7"	13	9'-0 5/8"	8'-2"
8'-8"	13	9'-1 3/4"	8'-3"
8'-9"	13	9'-2 7/8"	8'-4"
8'-10"	13	9'-4"	8'-5"

15'-0" FLOOR TO FLOOR HT : CUSTOM DESIGN (20 RISERS) 9" HIGH RISERS.



## Metal Spiral Staircases and Custom Design Staircases by The Iron Shop

8'-11"	13	9'-5 1/8"	8'-6"
9'-0"	13	9'-6 1/4"	8'-7"
9'-1"	14	9'-7 3/8"	8'-8"
9'-2"	14	9'-8 1/2"	8'-9"
9'-3"	14	9'-9 3/8"	8'-10"
9'-4"	14	9'-10 3/4"	8'-11"
9'-5"	14	9'-11 7/8"	9'-0"
9'-6"	14	10'-1"	9'-1"
9'-7"	14	10'-2 1/8"	9'-2"
9'-8"	14	10'-3 1/4"	9'-3"



Get a Stair Kit Price Quote • Order a Stair Kit Online • Get Our Catalog • About The Iron Shop • How to Build a Spiral  
Customer Show case • Testimonials • Customer Support • Show room Locator • Contact Us • Privacy • Site Map

Like 260



\* Shipping Promotion valid for delivery within the continental United States only

Copyright © 2012 The Iron Shop. All Rights Reserved.



1-800-523-7427

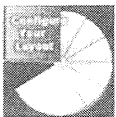


HOME

## Metal Spiral Stairs

- [Metal Spiral Overview](#)
- [Features](#)
- [Availability](#)
- [Accessories](#)
- [NEW Wheel Trade Powder Coat Colors](#)
- [Combination Turn](#)
- [Handrail Straight Stair](#)
- [Metal Spiral Gallery](#)
- [Indoor/Outdoor Spiral](#)
- [Outdoor Metal Spiral](#)
- [Installation Manual](#)
- [Installation Videos](#)
- [Stair Dimensions](#)
- Building Codes**
- [Requirements](#)
- [Metal Spiral FAQs](#)
- [Price Estimating](#)
- [Metal Spiral Warranties](#)
- [Shipping](#)
- [Custom Stairs](#)
- [Oak Spiral Stairs](#)
- [Victorian Spiral Stairs](#)

Get a Stair Kit Price Quote

[Order a Stair Kit Online](#)[Get Our Catalog](#)[About The Iron Shop](#)[How to Build a Spiral](#)[Customer Showcase](#)[Testimonials](#)[Customer Support](#)[Showroom Locator](#)[Contact Us](#)

Configure  
your layout  
[Click Here](#)



## Building Code Specifications

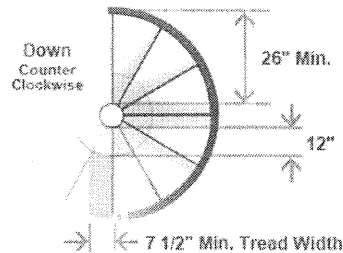
The Iron Shop's Code Stair Packages will address and meet compliance with each of the requirements that are listed below. This information will apply to the BOCA Code, UBC Code, IRC 2003, IRC 2006, IBC 2006, and IFC 2006 codes.

Please see our detailed Blueprint/Standard Plan for more information.

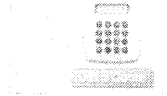
### IRC 2006 Stair Building Code

R311.5.8.1 Spiral Stairs. Spiral stairways are permitted, provided the minimum width shall be 26 inches (660 mm) with each tread having a 7 1/2 inch (190 mm) minimum tread depth a 12 inches from the narrower edge. All treads shall be identical, and the rise shall be no more than 9 1/2 inches (241 mm). A minimum headroom of 6 feet, 6 inches (1982 mm) shall be provided (See diagram below).

1. Minimum clear walking path of 26 inches. A 5-foot diameter or larger stair will provide this width.
2. Each tread will have a minimum tread depth of 7 1/2 inch at 12 inches from the narrow edge.
3. All treads will be identical.
4. The tread rise shall not be more than 9 1/2 inches high.
5. Landing width shall not be less than the required width of the stairway. Minimum spiral stair tread width is 26 inches.



6. Minimum headroom of 6 foot 6 inches shall be provided, measuring plumb from the edge of the landing down to the tread below.
7. Stair balusters shall be spaced so a 4-inch object cannot pass between. The IRC 2003 & 2006 permits a 4 3/8 inch space.
8. Balcony/Well Enclosure guardrail balusters shall be spaced so a 4-inch object cannot pass between.
9. Balcony/Well Enclosure guardrail height shall not be less than 36 inches. (If your state or municipality requires 42-inch tall guardrails, the sales order must reflect this detail.)
10. The stairway shall be equipped with one handrail on the wide edge of the tread.
11. Handrail height, measured vertically from the tread nosing, shall be not less than 34 inches and not more than 38 inches.
12. Handrail grip size. Handrails with a circular cross section shall have an outside diameter of at least 1 1/4 inches and not greater than 2 inches. If the handrail is not circular, it shall have a perimeter dimension not greater than 6 1/4 inches. Handrails with a perimeter greater than 6 1/4 inches, shall provide a graspable finger recess area on both sides of the profile.
13. A 300 lb. concentrated load is required. Please see our detailed Blueprint/Standard Plan for more information.

[Order a Stair Kit Online](#)[Get a Price Quote](#)[Spiral Staircase Lighting](#)

## Metal Spiral Staircases and Custom Design Staircases by The Iron Shop

The Iron Shop's standard spiral package does not address the open space between each tread (open rise stair). \*If your code, IRC 2003, IRC 2006 or IFC 2006 requires not more than a 4" space in this area, you will need to order our riser bars, Lip-up design treads, or riser plates.

Please check with your local building department/code enforcement office for the exact requirements for your municipality.

[top](#)



[Get a Stair Kit Price Quote](#) • [Order a Stair Kit Online](#) • [Get Our Catalog](#) • [About The Iron Shop](#) • [How to Build a Spiral](#)  
[Customer Show case](#) • [Testimonials](#) • [Customer Support](#) • [Show room Locator](#) • [Contact Us](#) • [Privacy](#) • [Site Map](#)

Like 260



\* Shipping Promotion valid for delivery within the continental United States only

Copyright © 2012 The Iron Shop. All Rights Reserved.