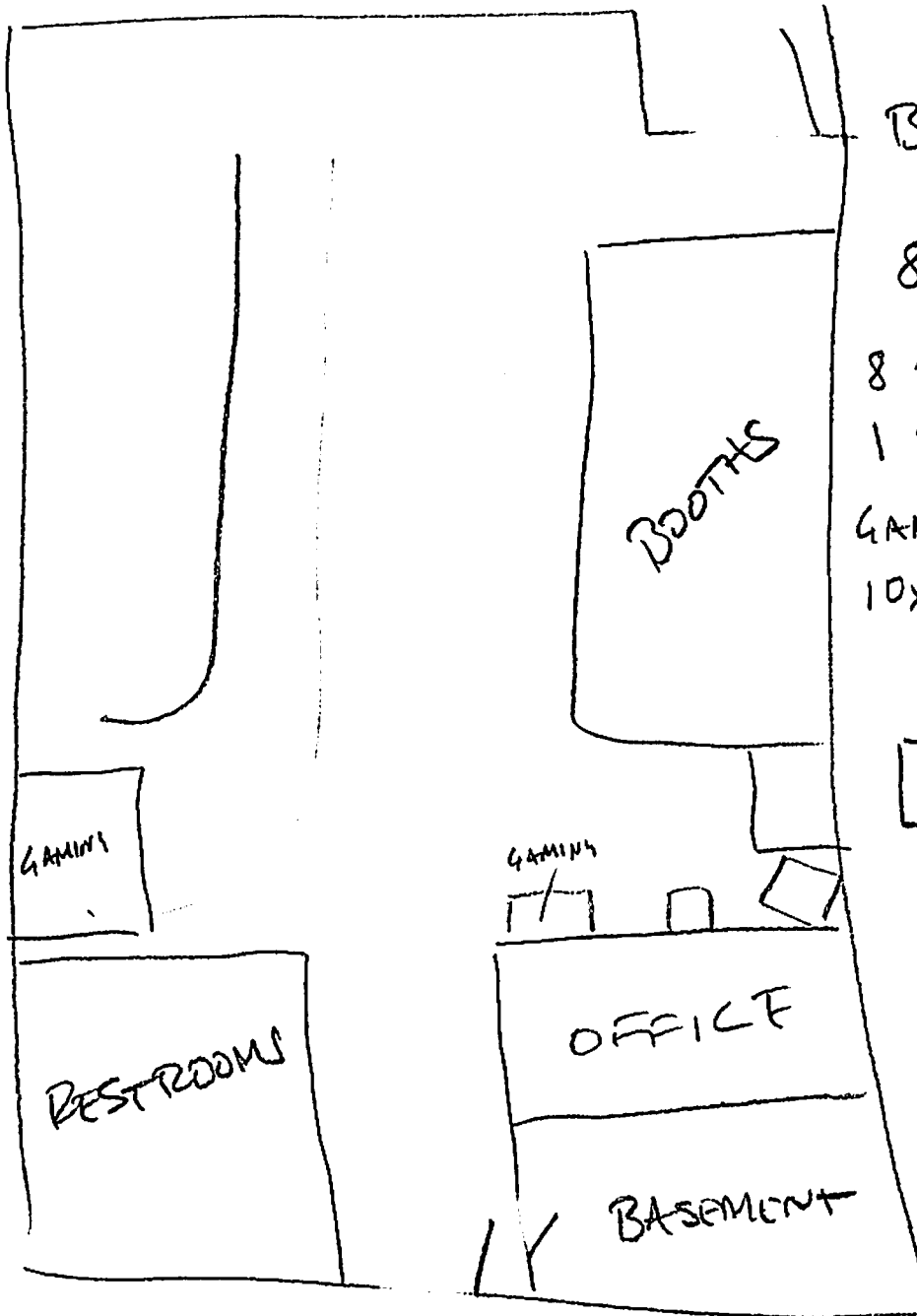


1080 PAYNE AVE



BAR

$$41 \times 2 = 82$$

$$82 \div 7 = \boxed{12}$$

$$8 \text{ BOOTHS } 4' = \boxed{32}$$

$$1 \text{ BOOTH } 11' = \boxed{6}$$

GAMING AREA

$$10 \times 12 = 120 \div 11$$

$$\boxed{11}$$

$$\boxed{61}$$

* BACK EXIT SHALL SWING IN THE WAY OF EGRESS

* 3 POINT PANEL BETTER FOR SECURITY.