

2020 Impact

2021 Goals

2022 Needs Assessment

APRIL 7, 2021



MISSION

We welcome all people to connect, learn, discover, and grow.

VISION

We imagine a Saint Paul where all people feel seen, safe, and welcome. We imagine a city where libraries bring people together to experience hope, joy, and creativity through learning.

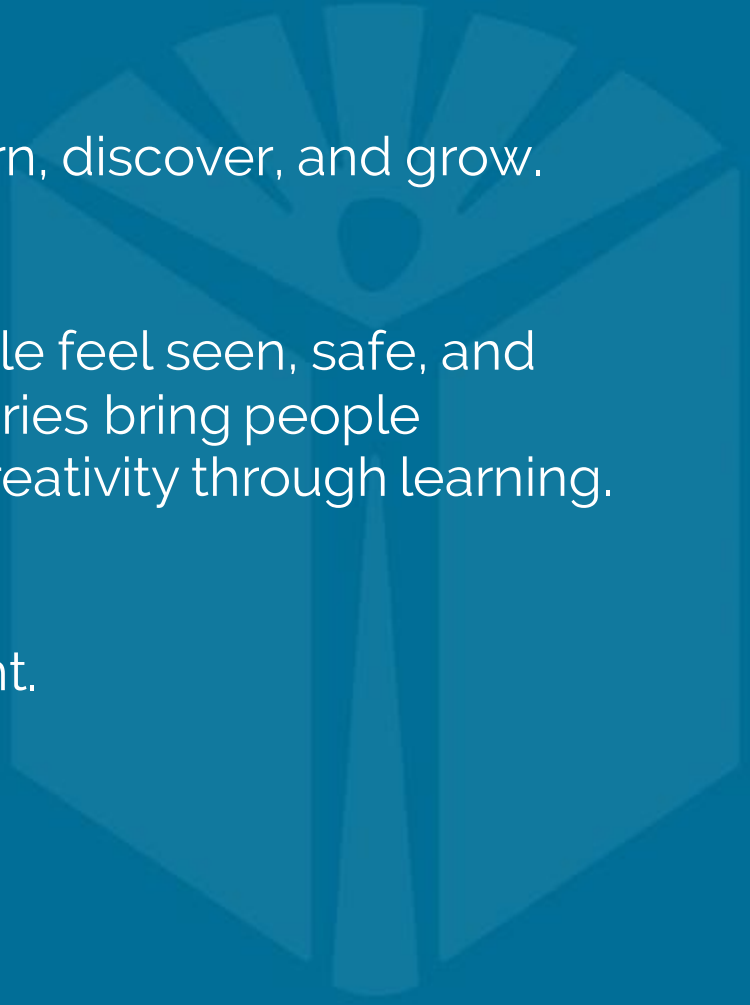
VALUES

We believe that learning is a human right.

We believe in connection.

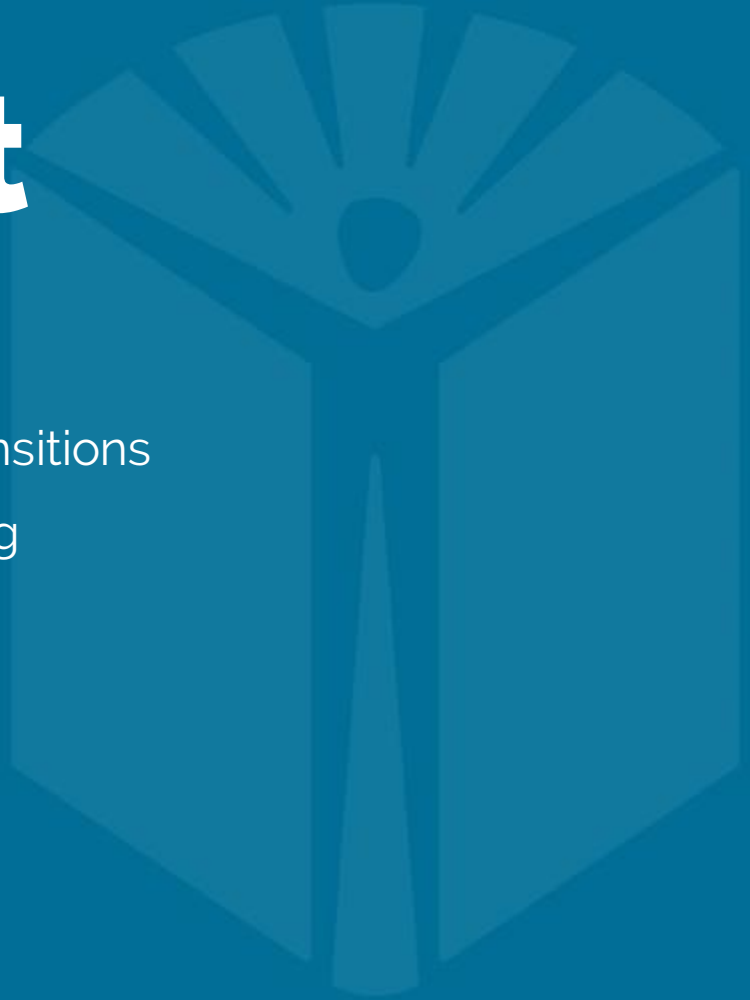
We believe in curiosity.

We believe in the power of belonging.



2020 Impact

- Digital Equity
- Support for Job Seekers and Career Transitions
- preK-12 Education and Distance Learning
- Racial Healing and Anti-Racism
- Strong Democracy
- Community Resources and Information
- Citywide Emergency Response



Sec 14.05 (b)

Director's priorities. Prior to transmitting the budget to the Mayor, the director shall have presented a needs and resource assessment to the library board with a list of the director's priorities. The presentation shall be made not later than one hundred sixty-five (165) days before the date requiring adoption of the proposed maximum tax levy in accordance with state law.

I was working as the research director a competition to generate innovative ideas about infrastructure for the region affected by Hurricane Sandy.

My job was to take these design teams of engineers, architects, and landscape architects around the region and help them discover the needs, vulnerabilities, and possibilities of different places.

One of the teams got excited about the idea of building what they called “**resilience centers.**”

They said, “Yes, it’s going to be a place that’s squarely in the neighborhood, and it’s going to be very welcoming as an institution and also as a physical place.

And there’s going to be programming for everybody—young people are going to feel comfortable there, they’ll come with their parents, and their parents will network there.

And older people will want to go there because it’s a nicer place than the senior center.



“And we want to build this very welcoming place because it’s important that when there’s a disaster, people know that they can be safe there.

And also this place would have computers and Wi-Fi access because we want to make sure that if there's a crisis and people really need support, that they have information and can communicate with each other.

And it should have all the basic facilities you’d need to make a place work well.”



I said, “Well, that sounds like an amazing place, but it also sounds exactly like a branch library.”

- sociologist Eric Klinenberg



Social infrastructure: the physical conditions that determine whether social capital develops.

When social infrastructure is robust, it fosters contact, mutual support, and collaboration among friends and neighbors; when degraded, it inhibits social activity, leaving families and individuals to fend for themselves.

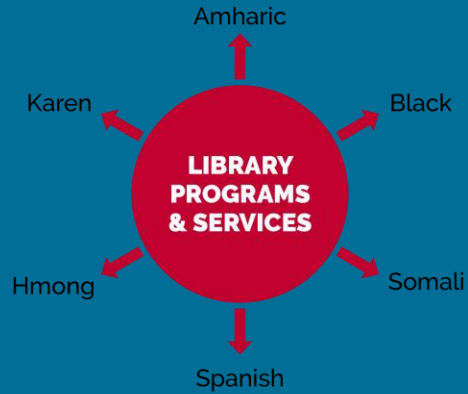
Social infrastructure is crucially important because local, face-to-face interactions – at the school, the playground, and the corner diner – are the building blocks of all public life.

Eric Klinenberg, [Palaces for the People: How Social Infrastructure Can Help Fight Inequality, Polarization, and the Decline of Civic Life](#)

How might we ... ?

- Help restore and repair our city's social infrastructure
- Identify areas where we're not going back – we're only going forward – in our service model
- Invest in our spaces: safe, inspiring, healing, resource-rich, technology-enabled, community-oriented
- Cultivate workplace culture
- Share our story
- Strengthen our internal capacity to support all of the above

Past



Future



Post-COVID Service Levels

This is the schedule we are building towards in 2021 as we are able to lift COVID-related restrictions.

Library Locations	2021 Number of Days Open Per Week	Days Closed (2021)	Change from 2019 (pre-COVID) open hours
Highland Sun Ray	7	-	(no change)
Arlington Hills Dayton's Bluff Merriam Park Rice Street Rondo	6	No Sundays	-1 day/week
Hamline Midway Hayden Heights Riverview St. Anthony Park	5	No Sundays or Mondays	-1 day/week
George Latimer Central	5	No Sundays or Mondays	-2 days/week
West Seventh	5	No Saturdays or Sundays	(no change)

2021 Priorities



- Establish Community Library Manager role
- Community-first public safety in libraries
- Support young people's reading by increasing use of Library Go
- Refresh Rice Street children's space
- Pilot expanded Community Services Specialists / Cultural Liaisons (IMLS grant)
- Continue to refine Career Labs model
- K-12 Summer Learning
- Capital investment proposals and fundraising
- Digital Equity

Facilities Vision



Library as Change Agent

The role of libraries continues to evolve. Libraries serve as resource-rich, community-oriented spaces.

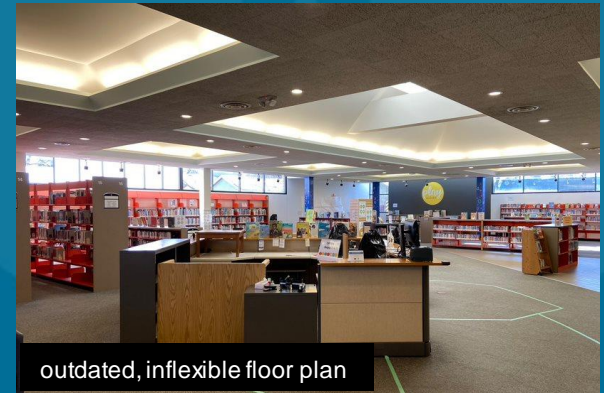
Technology and learning through play are high-impact strategic opportunities.

Facilities Investments

Project	Estimated Total Cost
Hayden Heights	\$5.8M
Riverview	\$3.7M
Hamline Midway* <i>Total cost depends on whether to renovate or rebuild at the current location.</i>	\$3.5 or \$8.1
All locations – upgrade to technology-rich community meeting rooms	\$1.5
All locations – upgrade children's areas to welcome and encourage hand-on learning through play	\$2.0
TOTAL	\$16.5M or \$21.1M

HAYDEN HEIGHTS - RENOVATION

- Last renovated: 1979
- Solid structure; outdated function
- Opportunity to transform what this space offers for community. Possibilities include:
 - Improved public meeting spaces
 - Individual work/study rooms
 - Enhanced technology
 - Play-based and creative learning space;
 - Teaching kitchen
- Invest in East Side – align with future Hillcrest development
- Estimated \$5.8M; target date 2022



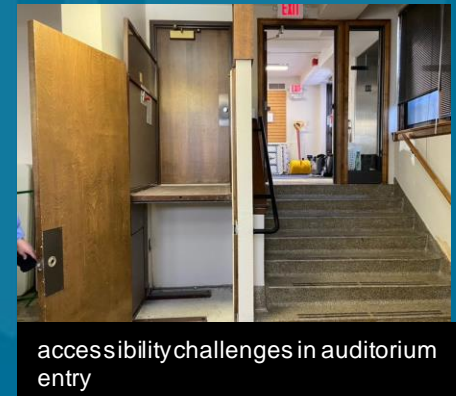
RIVERVIEW - RENOVATION

- Last renovated: 1989
- Update this historic facility to better meet community needs – today and in the future.
- Possibilities include:
 - Technology enhancements
 - Improved play-based learning space
 - Improved accessibility of entrances and restrooms
 - Improved meeting and programming space
 - Better separation between quiet/active spaces
- Build upon place and cultural history of West Side – welcoming to many immigrants, connection to river
- \$3.5M; target date 2022



HAMLIN MIDWAY – 2 OPTIONS

- Last renovated: 1990
- Significant structural and building systems issues. "This building is in bad condition."
- RENOVIATION
 - Maintain classic look and feel
 - Entire interior refresh to better meet community needs
 - \$3.6M, target date 2022
- NEW BUILDING
 - Expand square footage by at least 20%
 - Offers new functional possibilities not possible within existing structure
 - High sustainability, energy-efficiency goals
 - \$8.1M, target date 2023



TECHNOLOGY-RICH SPACES

"Libraries are the original coworking space. With meeting rooms, internet access, programming, and community members in one place, your friendly local librarian wants you to start thinking of libraries as the entrepreneurial spaces they've always been."

Above: Kauffman Foundation. Libraries are staking their claim as the original coworking spaces. Below: HGA architects.



PLAY-BASED LEARNING

"Changes in design morph the library from 'shhh' to a vibrant interactive family learning center"

"Infuse public spaces with playful learning opportunities that naturally enhance children's cognitive and social development"

Brookings Institute. Playbrary: A new vision of the neighborhood library.



INSPIRATION IMAGES



South Branch Library, Cleveland



Hosmer Library story garden, Minneapolis
source: damonfarber.com



Centennial Library, Anoka Co.



Roxbury Branch, Boston Public Library
Source: utiledesign.com



Hosmer Library: leodaly.com



Loudoun County Public Library; source:
hga.com

How might we ... ?

- Help restore and repair our city's social infrastructure
- Identify areas where we're not going back – we're only going forward – in our service model
- Invest in our spaces: safe, inspiring, healing, resource-rich, technology-enabled, community-oriented
- Cultivate workplace culture
- Share our story
- Strengthen our internal capacity to support all of the above