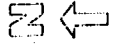
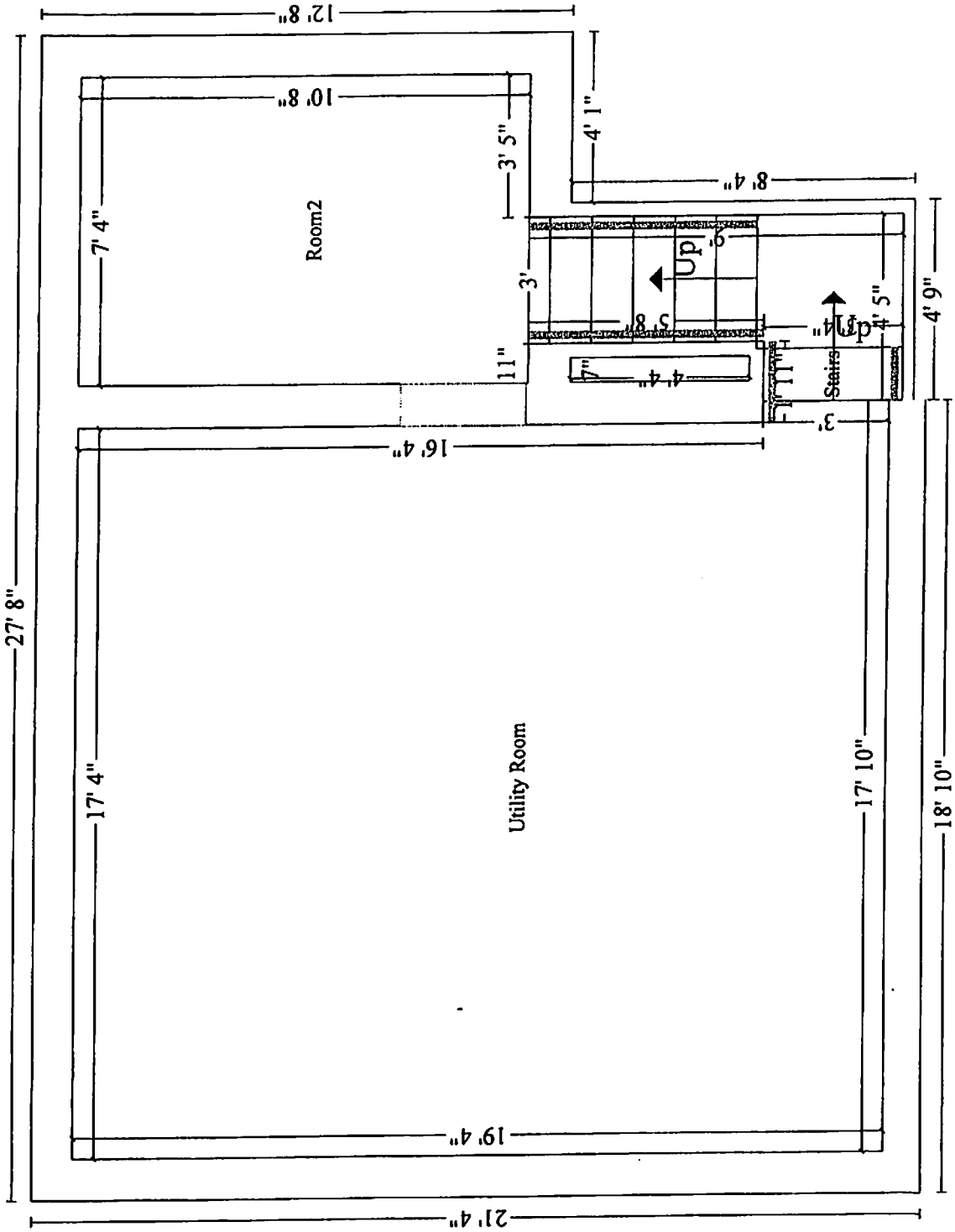


**JOB FLOW FOR
670 Western Ave N
St Paul, MN 55103**

Permit	Week One
Concrete Work	Week One
Demolition	Week One
Backspray	Week Three
Structural	Week Two
Install Windows	Week Four
Install Exterior Doors	Week Four
Roofing	Week Two
Siding	Week Twelve
HVAC Rough In	Week Four
Plumbing Rough In	Week Five
Electrical Rough In	Week Six
Insulation	Week Seven
Sheet Rock	Week Seven & Eight
Cabinets	Week Nine
Countertops	Week Ten
Interior Trim	Week Nine & Ten
Interior Doors	Week Nine & Ten
Flooring-Vinyl	Week Eleven
Painting	Week 12 & Thirteen
Carpet	Week Fourteen
Final Clean	Week Fifteen

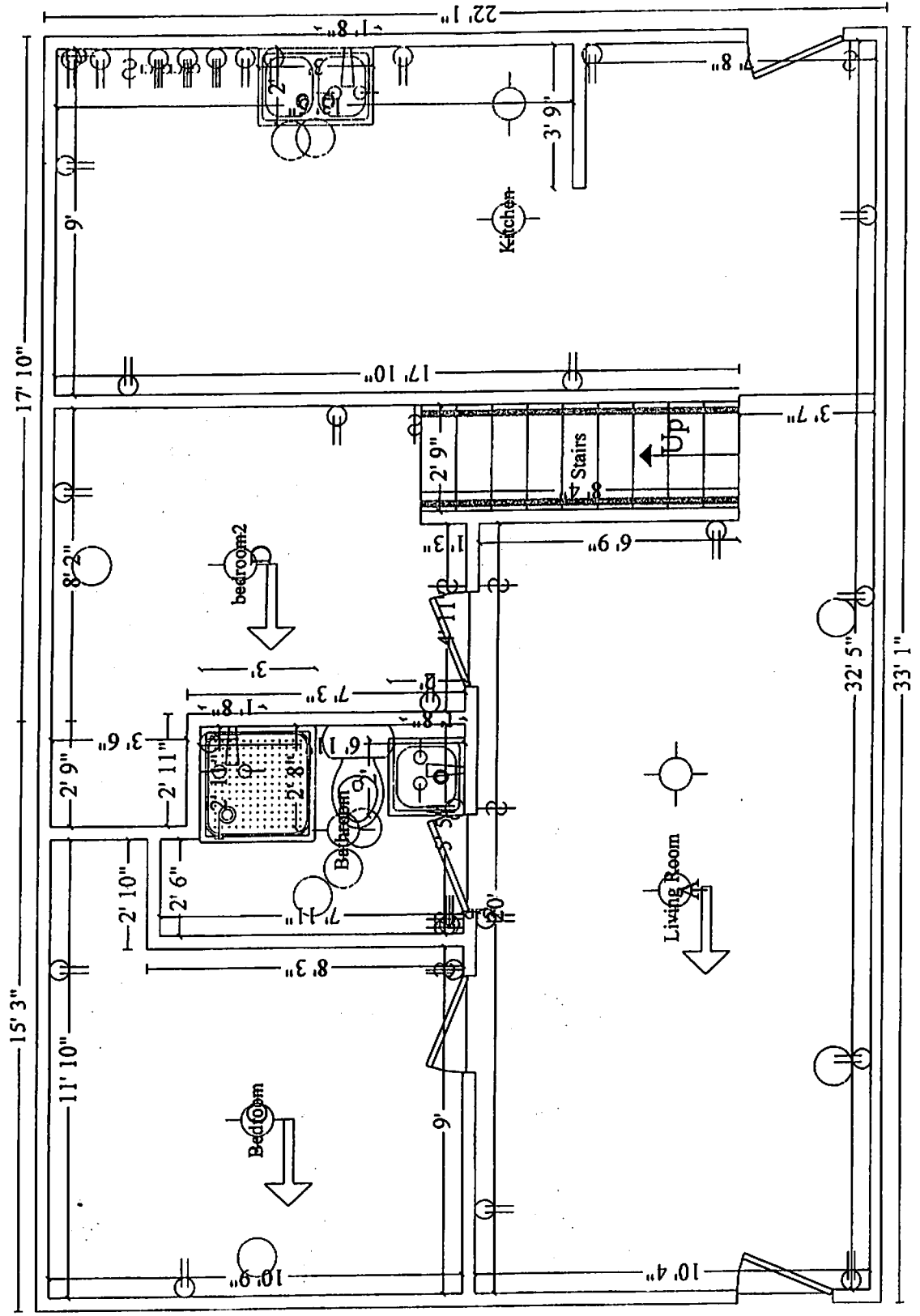
670 Western Ave No.
St. Paul, MN

Basement

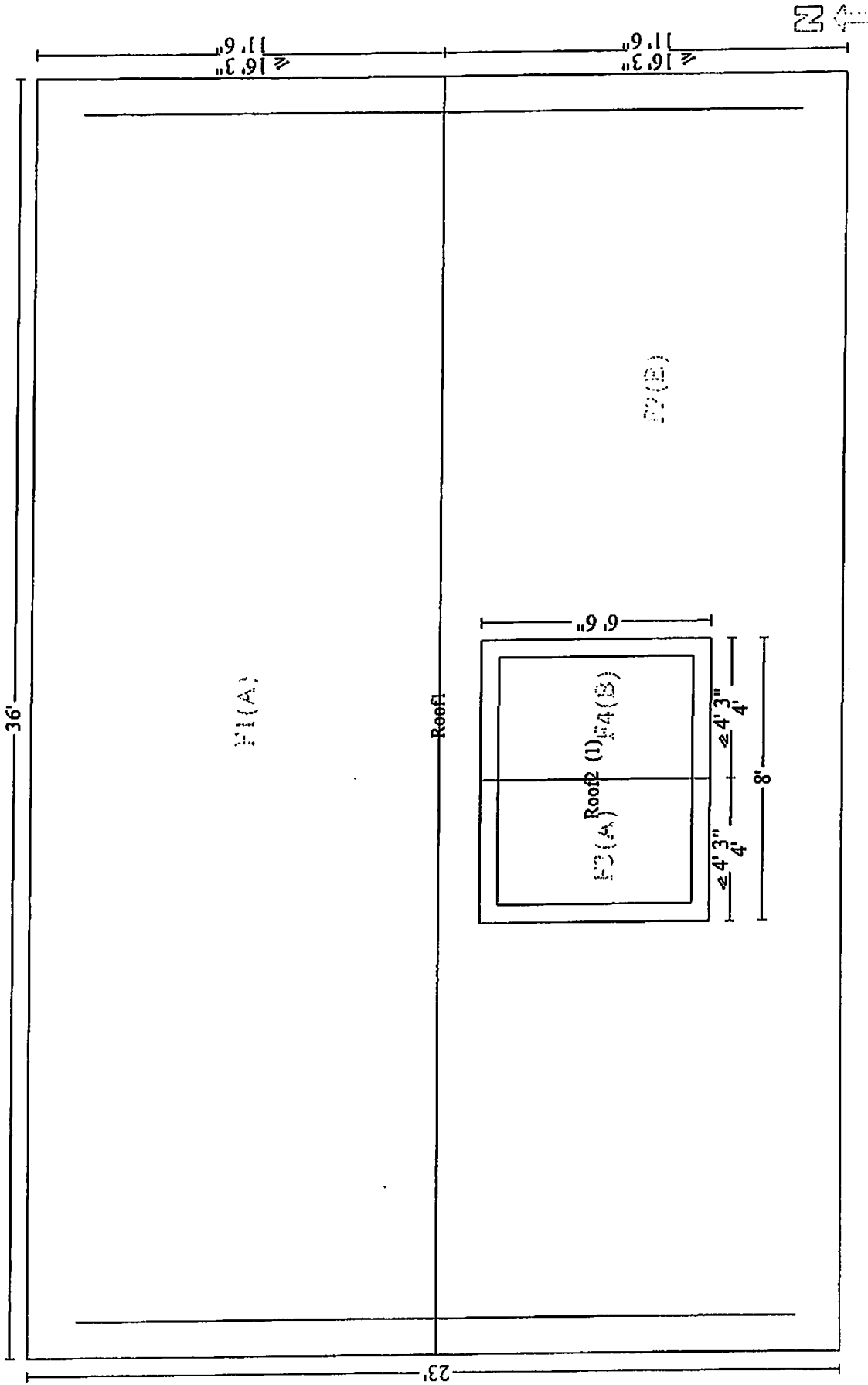


Basement

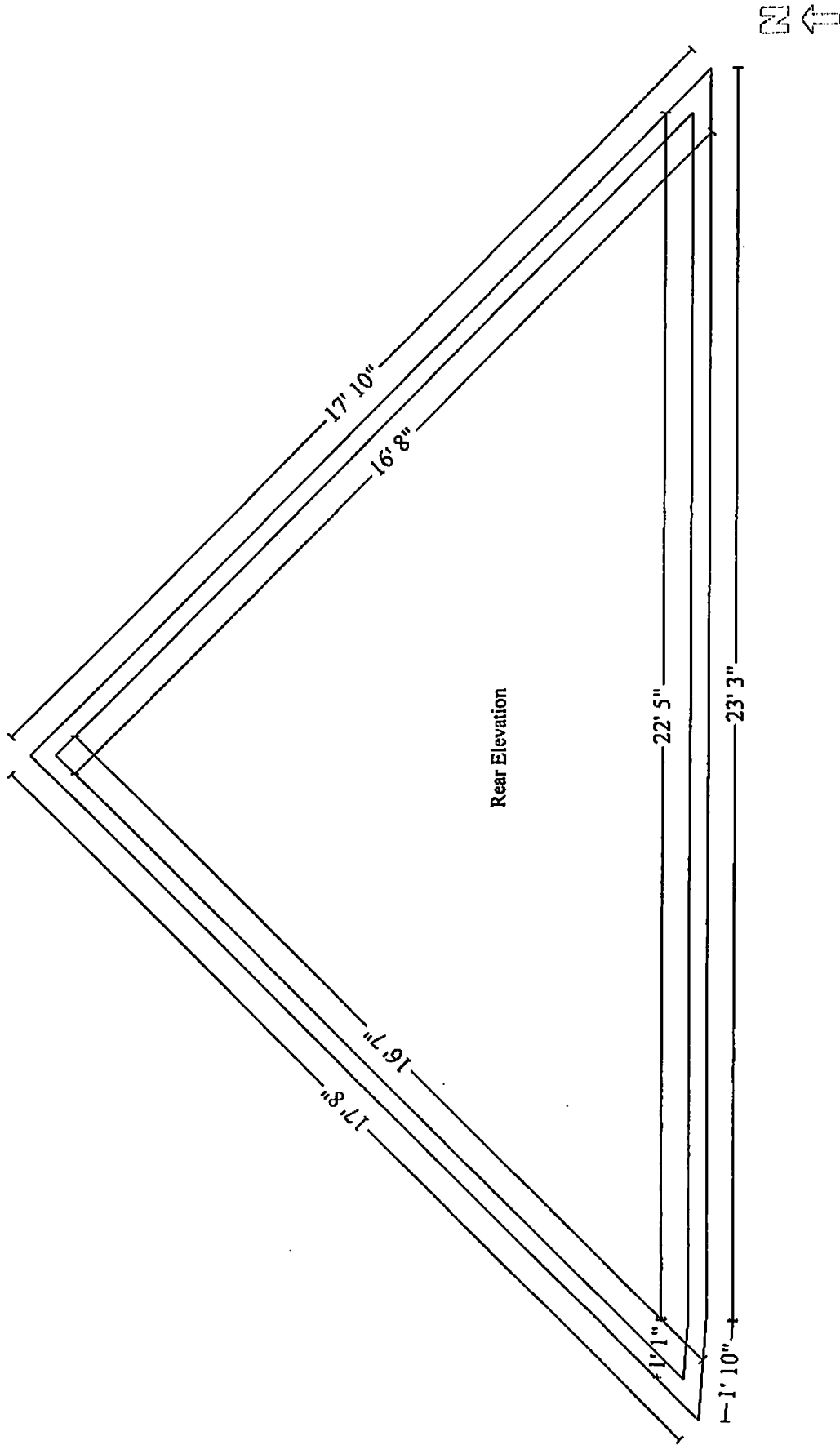
670 Western Ave
St. Paul, MN.



670 Western
St. Paul, MN.



670 Western
St. Paul, MN



670 Western No.
St. Paul, MN.

