

# NEURER'S

# ADDITION

## Exhibit A

LOT 14

PROPERTY OWNER: CITY OF ST. PAUL

LOT 7

LOT 13

BLOCK

VACATED VALLEY ALLEY

LOT 8

CONCRETE S&LB ENCRACHES NORTH 0.35 FEET

CONCRETE TOWER BASE ENCRACHES TO THE NORTH BY 0.67 FEET

LOT 12

LOT 11

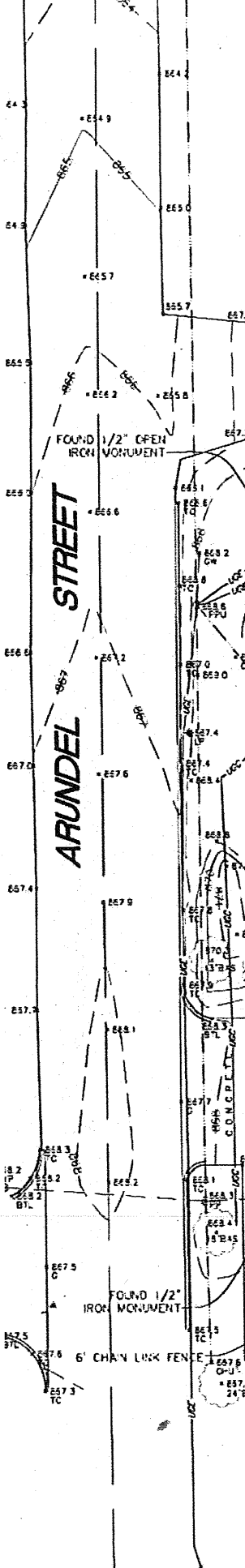
LOT 9

LOT 10

PROPERTY OWNER: MS AND S ENTE

VACATED STRI

ARUNDEL STREET



**MINC MAUI**  
RAMSEY COUNTY

Coordinates of position designated hereon as such  $\odot$  per NAD 83 coordinate are as follows:

LATITUDE AND LONGITUDE

Latitude = N 44°57'51.3"

Longitude = W 93°07'06.5"