

25 George Street E

#24-096-153 Rezone from B1 local business to H1 residential



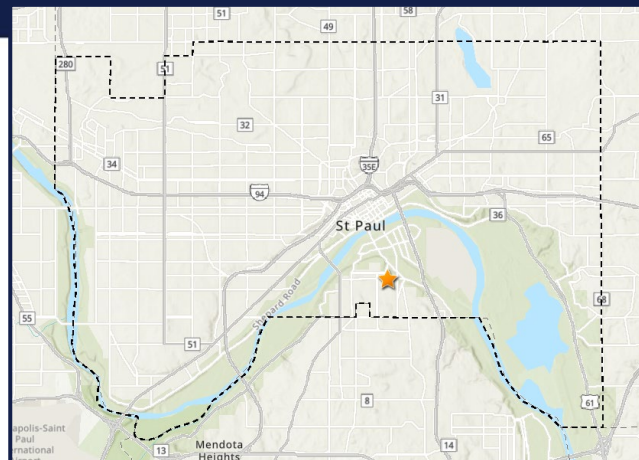
SAINT PAUL
MINNESOTA

STPAUL.GOV



Location

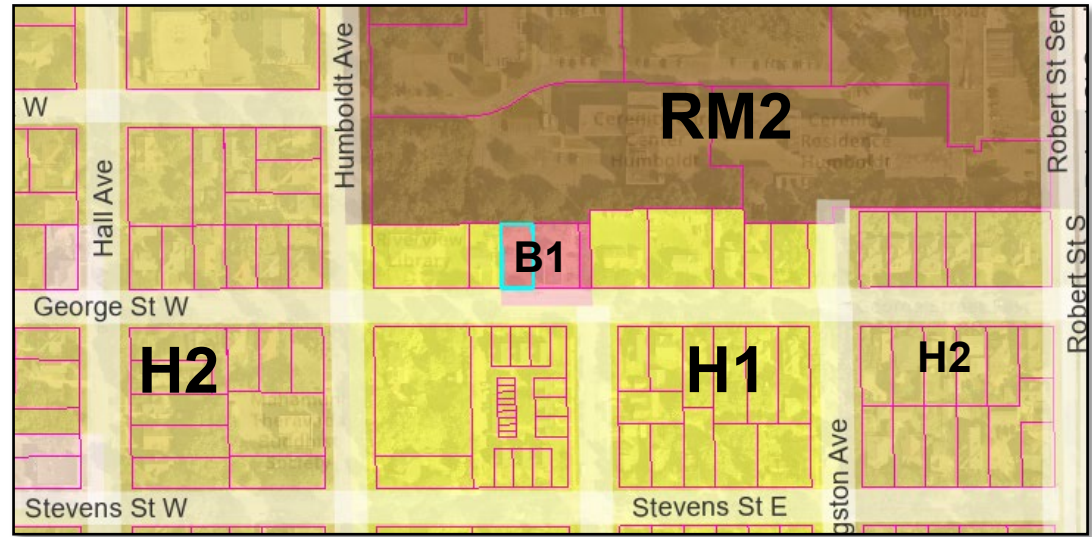
25 George Street E





Land Use & Zoning

- **North:** Nursing home (**RM2**)
- **East:** Mixed residential/commercial (**B1**), residential (**H1**)
- **South:** Residential (**H1**)
- **West:** Residential (**H1 and H2**), public library (**H1**)





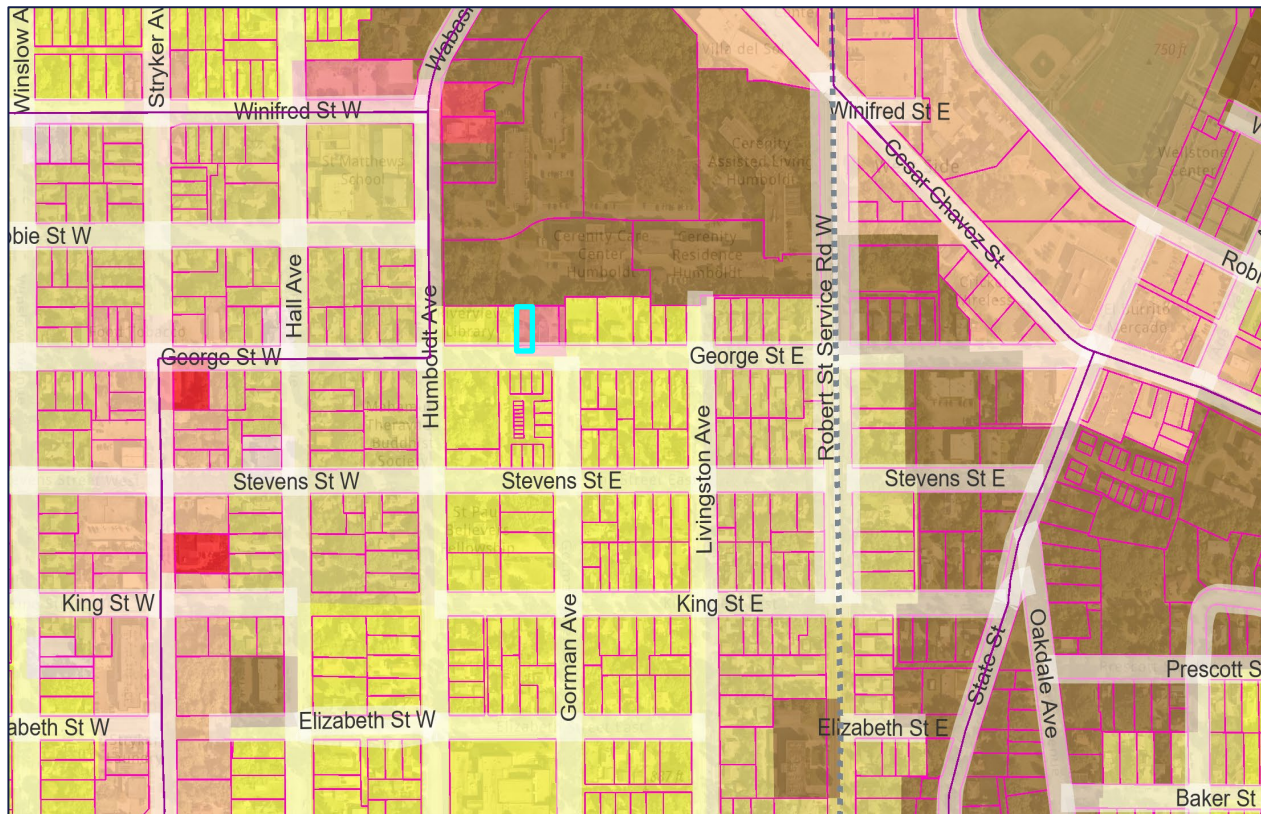
Site








- **Application:** Rezoning from B1 local business to H1 residential
- **Parcel Size:** 5,227 square feet
- **Existing Land Use:** detached garage





Finding: Proposed zoning is consistent with development patterns



-  H1 residential
-  H2 residential
-  RM1 low-density multiple-family
-  RM2 medium-density multiple-family
-  T1 traditional neighborhood
-  B1 local business
-  B2 community business
- Transit lines
- Planned transitway

Questions?

25 George St E

#24-096-153 Rezone from B1 local business to H1 residential



SAINT PAUL
MINNESOTA

STPAUL.GOV