

# HIGHLAND BRIDGE ROWHOMES FIFTH ADDITION

KNOW ALL PERSONS BY THESE PRESENTS: That Pulte Homes of Minnesota, LLC, a Minnesota limited liability company, owner of the following described property situated in the City of Saint Paul, County of Ramsey, State of Minnesota:

Lot 5, Block 1, HIGHLAND BRIDGE ROWHOMES, according to the recorded plat thereof, Ramsey County, Minnesota

Together with the southerly 1.66 feet of Lot 4, said Block 1.

AND

Lots 6, 7, 8, 9, 10, 11, 12, 13 and 14, Block 1, HIGHLAND BRIDGE ROWHOMES, Ramsey County, Minnesota.

Has caused the same to be surveyed and platted as HIGHLAND BRIDGE ROWHOMES FIFTH ADDITION.

In witness whereof said Pulte Homes of Minnesota, LLC, a Minnesota limited liability company, has caused these presents to be signed by its proper officer this \_\_\_\_\_ day of \_\_\_\_\_, 20\_\_\_\_.

Signed: Pulte Homes of Minnesota, LLC

\_\_\_\_\_, Chief Manager

STATE OF MINNESOTA  
COUNTY OF \_\_\_\_\_

The foregoing instrument was acknowledged before me this \_\_\_\_\_ day of \_\_\_\_\_, 20\_\_\_\_, by Jamie Tharp, Chief Manager of Pulte Homes of Minnesota, LLC, a Minnesota limited liability company, on behalf of the company.

\_\_\_\_\_  
Signature

\_\_\_\_\_  
Printed Name

Notary Public, \_\_\_\_\_ County, Minnesota

My Commission Expires \_\_\_\_\_

## SURVEYOR'S CERTIFICATE

I, Peter D. Goers, Licensed Land Surveyor, do hereby certify that I have surveyed or directly supervised the survey of the property described on this plat; prepared this plat or directly supervised the preparation of this plat; that this plat is a correct representation of the boundary survey; that all mathematical data and labels are correctly designated on this plat; that all monuments depicted on this plat have been correctly set; that all water boundaries and wet lands, as defined in Minnesota Statutes, Section 505.01, Subd. 3, as of the date of the surveyor's certification are shown and labeled on this plat; and all public ways are shown and labeled on this plat.

Dated this \_\_\_\_\_ day of \_\_\_\_\_, 20\_\_\_\_.

\_\_\_\_\_  
Peter D. Goers, Licensed Land Surveyor  
Minnesota License No. 44110

STATE OF MINNESOTA  
COUNTY OF \_\_\_\_\_

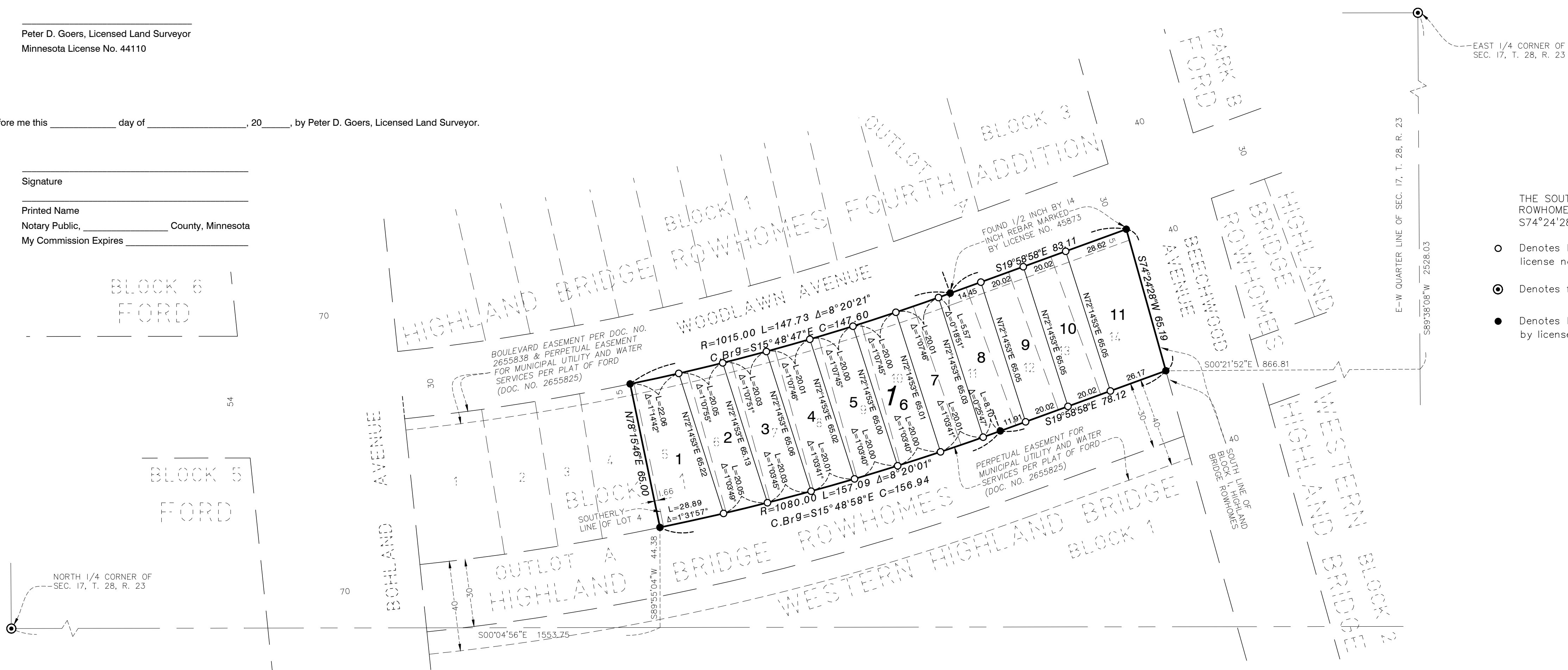
The foregoing Surveyor's Certificate was acknowledged before me this \_\_\_\_\_ day of \_\_\_\_\_, 20\_\_\_\_, by Peter D. Goers, Licensed Land Surveyor.

\_\_\_\_\_  
Signature

\_\_\_\_\_  
Printed Name

Notary Public, \_\_\_\_\_ County, Minnesota

My Commission Expires \_\_\_\_\_



CITY COUNCIL  
CITY OF SAINT PAUL

I do hereby certify that on the \_\_\_\_\_ day of \_\_\_\_\_, 20\_\_\_\_, the City Council of the City of Saint Paul, Minnesota, approved this plat.

\_\_\_\_\_  
City Clerk

PROPERTY TAX, RECORDS AND ELECTION SERVICES DEPARTMENT

Pursuant to Minnesota Statutes, Section 505.021, Subd. 9, taxes payable in the year \_\_\_\_\_ on the land hereinbefore described have been paid. Also, pursuant to Minnesota Statutes, Section 272.12, there are no delinquent taxes and transfer entered this \_\_\_\_\_ day of \_\_\_\_\_, 20\_\_\_\_.

Heather L. Bestler, Ramsey County Auditor/Treasurer

By \_\_\_\_\_, Deputy

COUNTY SURVEYOR

Pursuant to Minnesota Statutes, Section 383A.42, this plat is approved this \_\_\_\_\_ day of \_\_\_\_\_, 20\_\_\_\_.

\_\_\_\_\_  
Daniel D. Baar, L.S.  
Ramsey County Surveyor

REGISTRAR OF TITLES

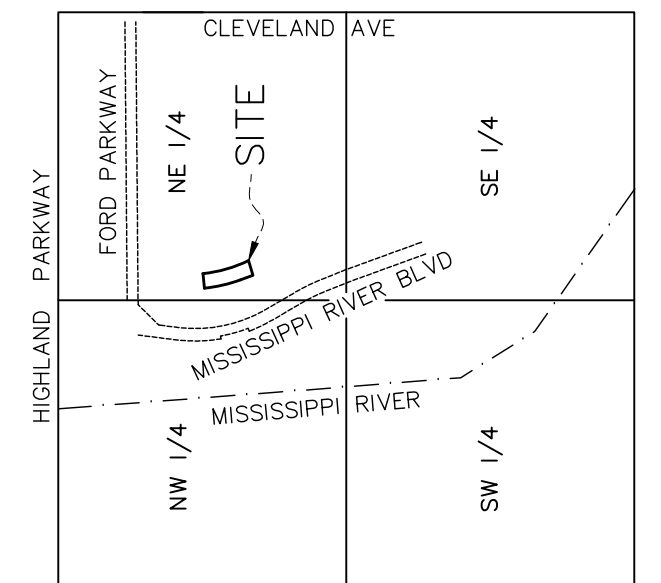
Registrar of Titles, County of Ramsey, State of Minnesota

I hereby certify that this plat of HIGHLAND BRIDGE ROWHOMES FIFTH ADDITION was filed in the office of the Registrar of Titles for public record on this \_\_\_\_\_ day of \_\_\_\_\_, 20\_\_\_\_, at \_\_\_\_\_ o'clock \_\_\_\_\_ M. and was duly filed in Book \_\_\_\_\_ of Plats, Page \_\_\_\_\_, as Document Number \_\_\_\_\_.

\_\_\_\_\_  
Deputy Registrar of Titles

## VICINITY MAP

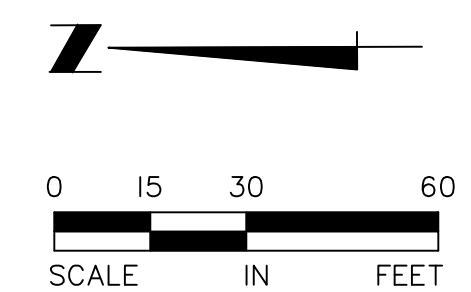
SECTION 17, T. 28, R. 23



NOT TO SCALE

THE SOUTH LINE OF BLOCK 1, HIGHLAND BRIDGE ROWHOMES, IS ASSUMED TO HAVE A BEARING OF S74°24'28"W.

- Denotes 1/2 inch x 18 inch iron pipe set marked by license no. 44110
- ⊙ Denotes found Cast Iron Monument
- Denotes 1/2 inch x 18 inch iron pipe found marked by license no. 44110 unless otherwise shown



SCALE: ONE INCH EQUALS THIRTY FEET