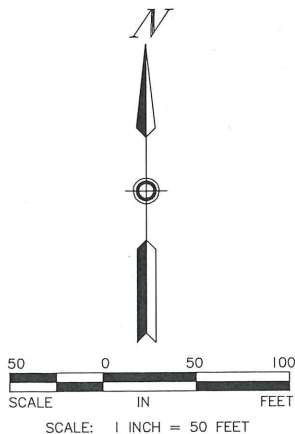
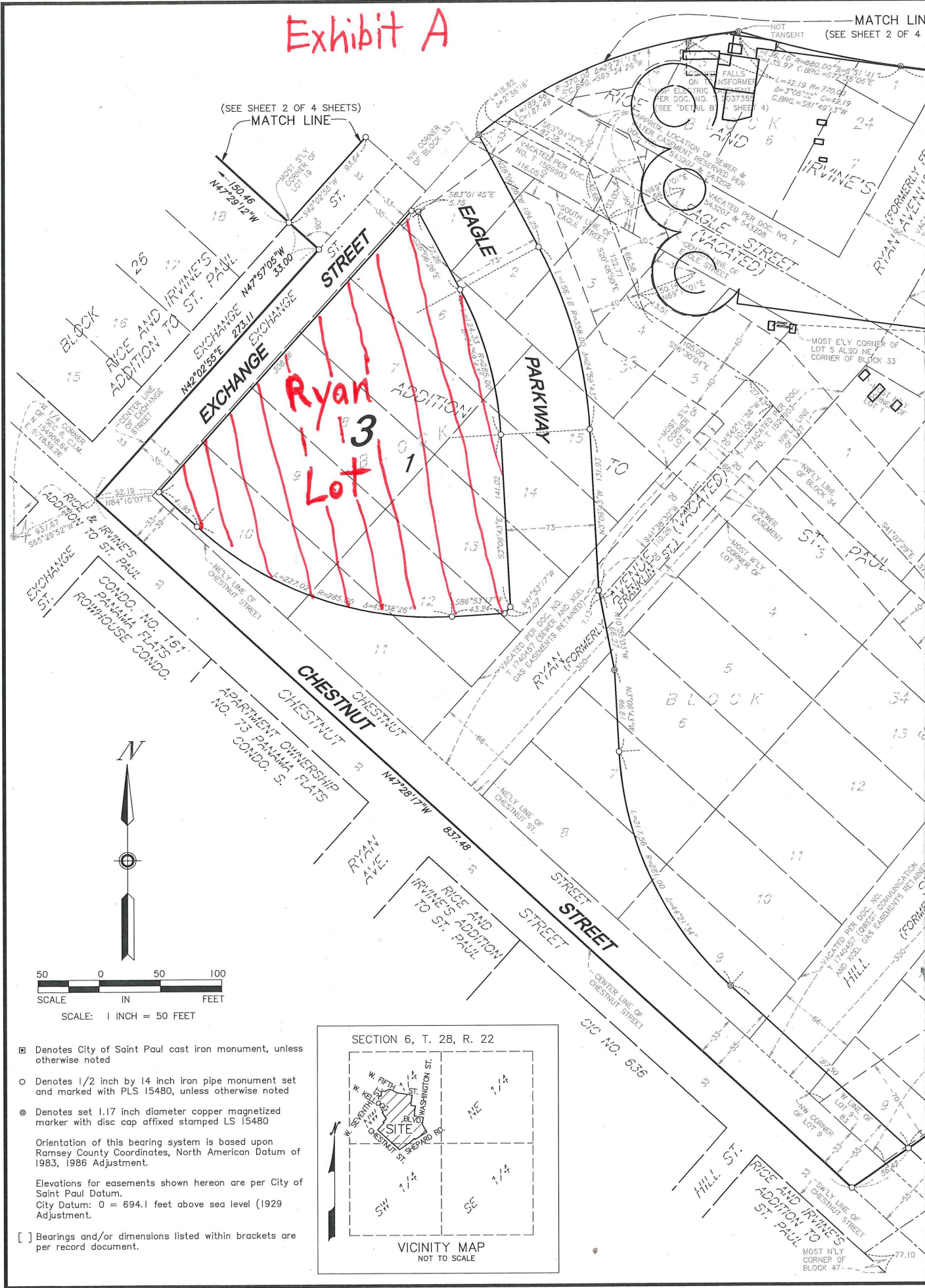


Exhibit A

MATCH LINE
(SEE SHEET 2 OF 4)



- Denotes City of Saint Paul cast iron monument, unless otherwise noted
 - Denotes 1/2 inch by 14 inch iron pipe monument set and marked with PLS 15480, unless otherwise noted
 - ⊙ Denotes set 1.17 inch diameter copper magnetized marker with disc cap affixed stamped LS 15480
- Orientation of this bearing system is based upon Ramsey County Coordinates, North American Datum of 1983, 1986 Adjustment.
- Elevations for easements shown hereon are per City of Saint Paul Datum.
City Datum: 0 = 694.1 feet above sea level (1929 Adjustment).
- [] Bearings and/or dimensions listed within brackets are per record document.

