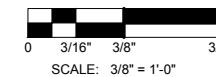


22" x 34" PRINT IS THE FULL SCALE FORMAT. ANY SIZE OTHER THAN THAT IS AT REDUCED SCALE.

NOTE:
PROJECT SCOPE OF WORK DOES NOT INCLUDE A STRUCTURAL EVALUATION OF THIS POLE OR STRUCTURE. NEW EQUIPMENT SHOWN ON THIS PLAN HAVE NOT BEEN EVALUATED TO VERIFY THE POLE OR STRUCTURE HAS THE CAPACITY TO ADEQUATELY SUPPORT THE EQUIPMENT. PRIOR TO ANY INSTALLATION, A STRUCTURAL EVALUATION OF THE POLE OR STRUCTURE SHOULD BE PERFORMED.



22" x 34" PRINT IS THE FULL SCALE FORMAT. ANY SIZE OTHER THAN THAT IS AT REDUCED SCALE.



BUELL CONSULTING INC.
1360 ENERGY PARK DRIVE, SUITE 210
ST. PAUL, MN 55108
(651) 225-0793
www.buellconsulting.com

TERRA CONSULTING GROUP, LTD.
600 BUSSE HIGHWAY
PARK RIDGE, IL 60068
(847) 698-6400

NO.	DESCRIPTION	DATE	BY

MOBITIE ID/
CASCADE ID

TYPICAL
INSTALLATION #2

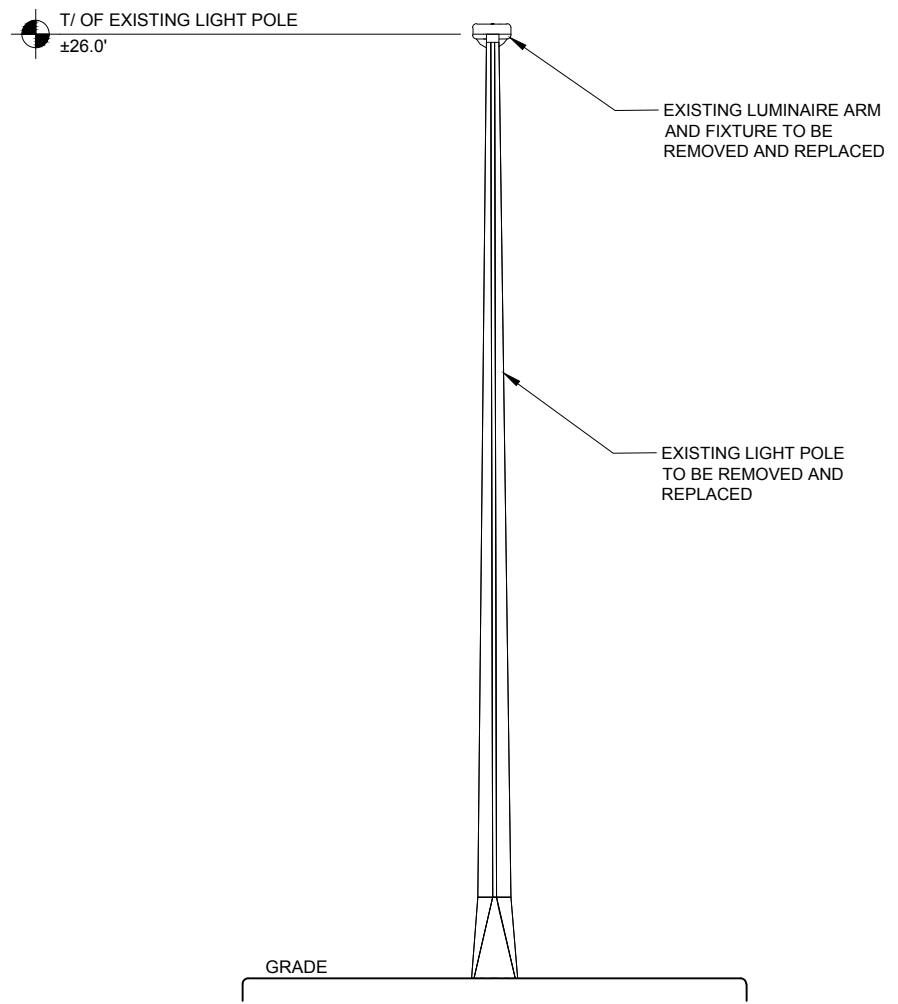
ADDRESS
SAINT PAUL, MN

DRAWN BY:
CHECKED BY:
DATE:
PROJECT #:

SHEET TITLE
EXISTING & PROPOSED
ELEVATIONS

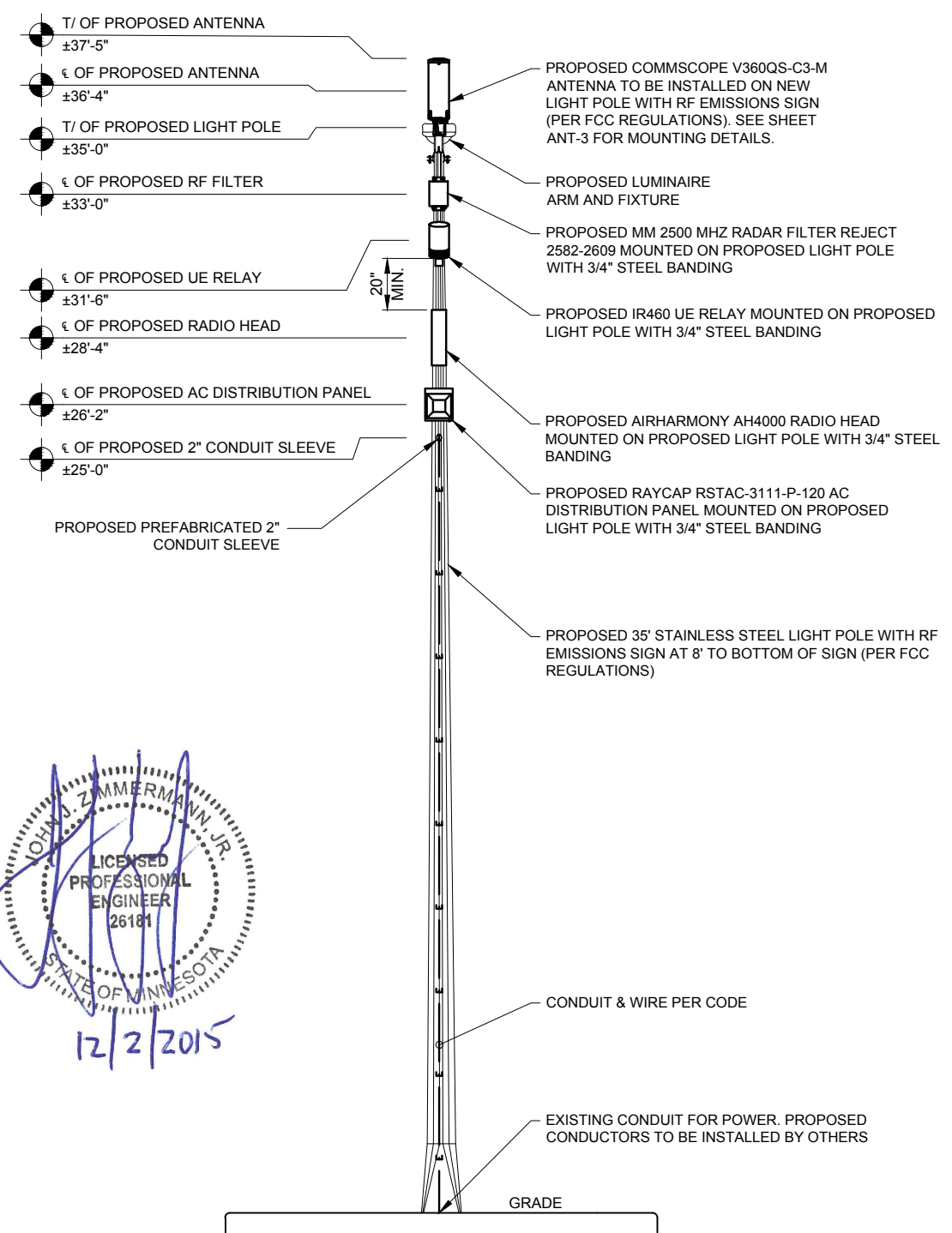
SHEET NUMBER

ANT-1



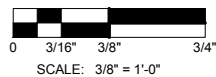
1 EXISTING NORTHEAST ELEVATION
SCALE: 3/8" = 1'-0" ±

EQUIPMENT CHART				
QUANTITY	DESCRIPTION	CABLE LENGTH	DIMENSIONS (HxWxD)	WEIGHT
1	COMMSCOPE V360QS-C3-M	TBD	23.5" X 7.9" DIAMETER	15.4 LBS
1	MM 2500 MHZ RADAR REJECT 2582-2609	TBD	13.58" X 8.07" X 2.4"	7.28 LBS
1	IR460 UE RELAY	TBD	12.99" X 7.87" DIAMETER	8.8 LBS
1	AIRHARMONY AH4000	TBD	23.0" X 10.7" X 8.9"	46.3 LBS
1	TALLYSMAN TW3012	TBD	1.96" X 2.6" DIAMETER	0.33 LBS
1	RAYCAP RSTAC-3111-P-120 AC DISTRIBUTION PANEL	TBD	13.13" X 11.38" X 4.38"	TBD



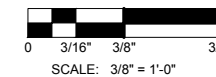
2 PROPOSED NORTHEAST ELEVATION
SCALE: 3/8" = 1'-0" ±

JOHN J. ZIMMERMANN JR.
LICENSED PROFESSIONAL ENGINEER
26181
STATE OF MINNESOTA
12/2/2015

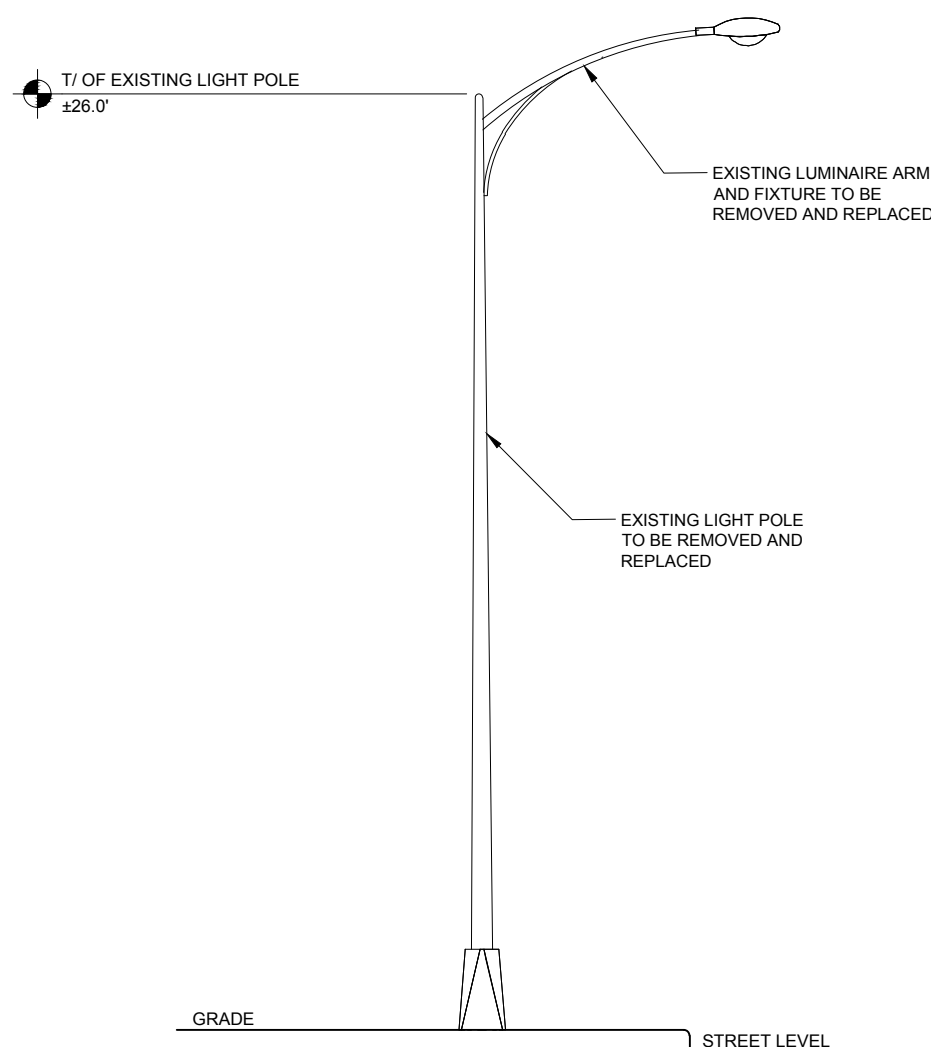


22' x 34' PRINT IS THE FULL SCALE FORMAT. ANY SIZE OTHER THAN THAT IS AT REDUCED SCALE.

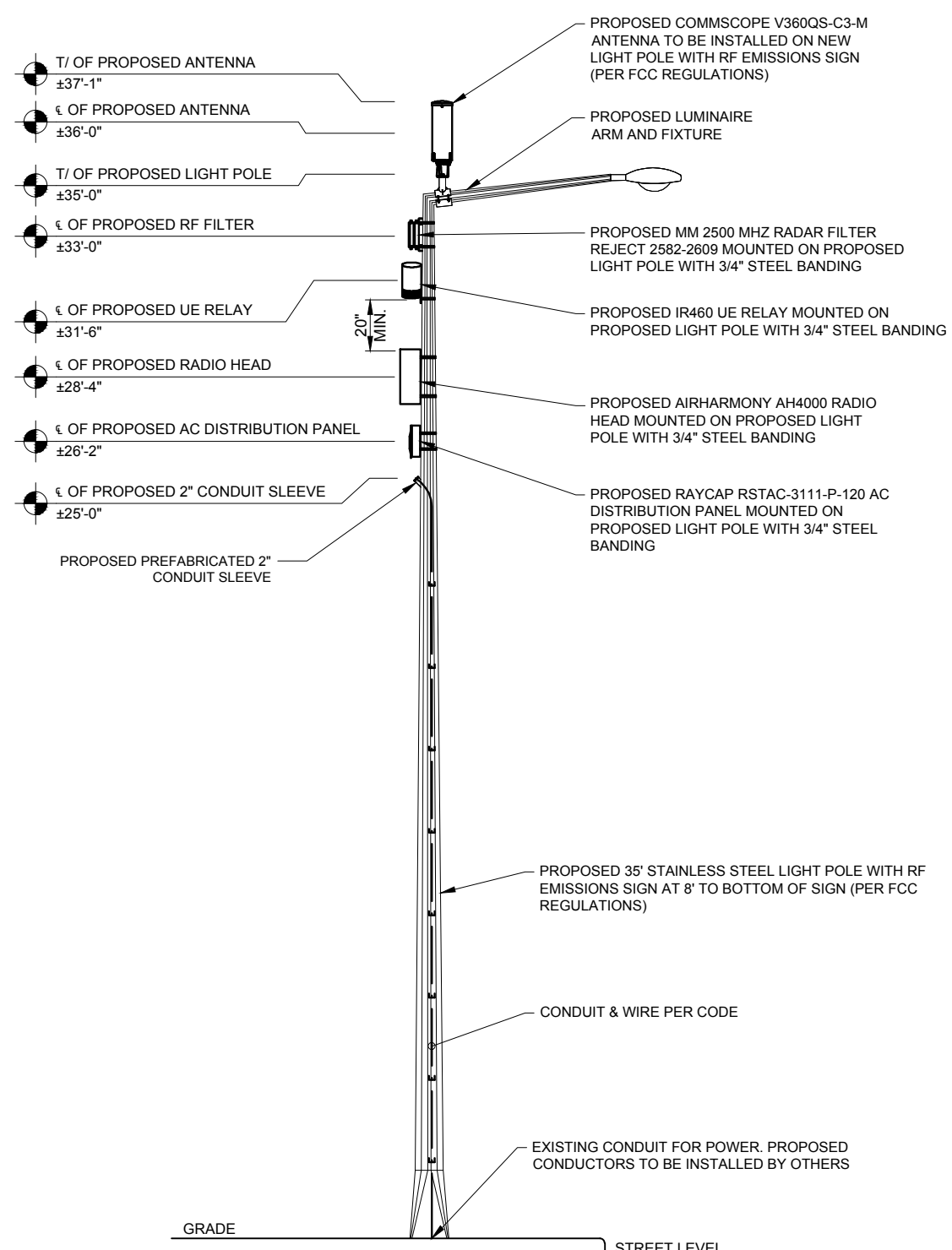
NOTE:
PROJECT SCOPE OF WORK DOES NOT INCLUDE A STRUCTURAL EVALUATION OF THIS POLE OR STRUCTURE. NEW EQUIPMENT SHOWN ON THIS PLAN HAVE NOT BEEN EVALUATED TO VERIFY THE POLE OR STRUCTURE HAS THE CAPACITY TO ADEQUATELY SUPPORT THE EQUIPMENT. PRIOR TO ANY INSTALLATION, A STRUCTURAL EVALUATION OF THE POLE OR STRUCTURE SHOULD BE PERFORMED.



22' x 34' PRINT IS THE FULL SCALE FORMAT. ANY SIZE OTHER THAN THAT IS AT REDUCED SCALE.



1 EXISTING SOUTHWEST ELEVATION
SCALE: 3/8" = 1'-0" ±



2 PROPOSED SOUTHWEST ELEVATION
SCALE: 3/8" = 1'-0" ±

EQUIPMENT CHART				
QUANTITY	DESCRIPTION	CABLE LENGTH	DIMENSIONS (HxWxD)	WEIGHT
1	COMMSCOPE V360QS-C3-M	TBD	23.5" X 7.9" DIAMETER	15.4 LBS
1	MM 2500 MHZ RADAR REJECT 2582-2609	TBD	13.58" X 8.07" X 2.4"	7.28 LBS
1	IR460 UE RELAY	TBD	12.99" X 7.87" DIAMETER	8.8 LBS
1	AIRHARMONY AH4000	TBD	23.0" X 10.7" X 8.9"	46.3 LBS
1	TALLYSMAN TW3012	TBD	1.96" X 2.6" DIAMETER	0.33 LBS
1	RAYCAP RSTAC-3111-P-120 AC DISTRIBUTION PANEL	TBD	13.13" X 11.38" X 4.38"	TBD



BUELL CONSULTING INC.
1360 ENERGY PARK DRIVE, SUITE 210
ST. PAUL, MN 55108
(651) 225-0793
www.buellconsulting.com

TERRA CONSULTING GROUP, LTD.
600 BUSSE HIGHWAY
PARK RIDGE, IL 60068
(847) 698-6400

NO.	DESCRIPTION	DATE	BY

MOBITIE ID/
CASCADE ID

TYPICAL
INSTALLATION #2

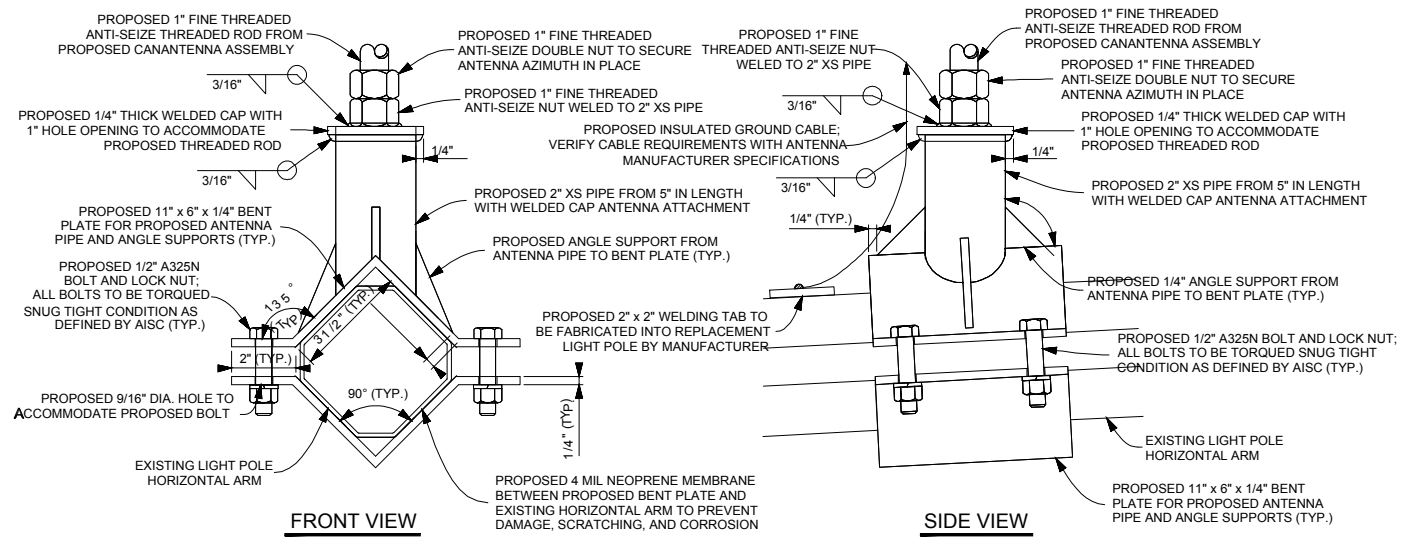
ADDRESS
SAINT PAUL, MN

DRAWN BY:
CHECKED BY:
DATE:
PROJECT #:

SHEET TITLE
EXISTING & PROPOSED
ELEVATIONS

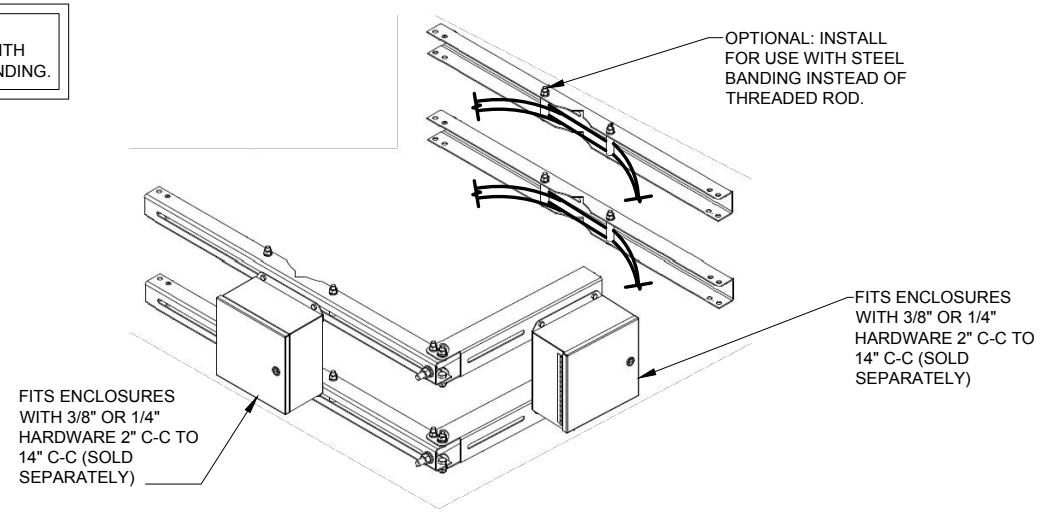
SHEET NUMBER

ANT-2

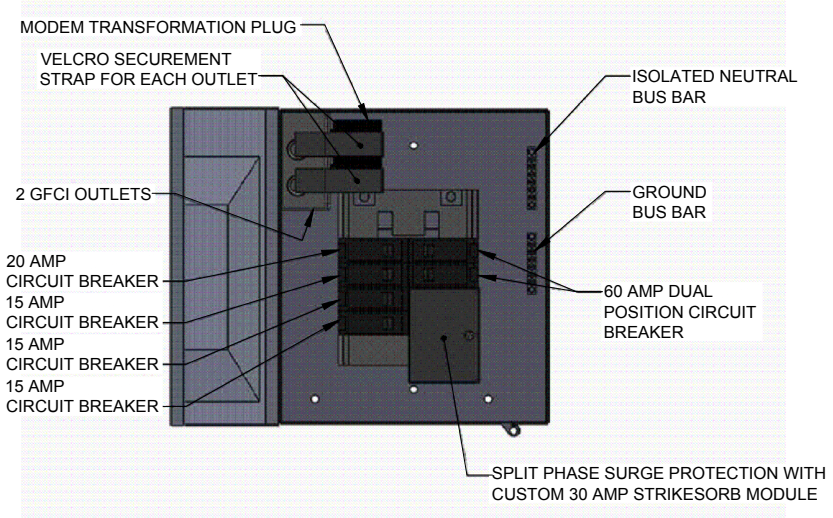


1 ANTENNA MOUNTING DETAILS
SCALE: N.T.S.

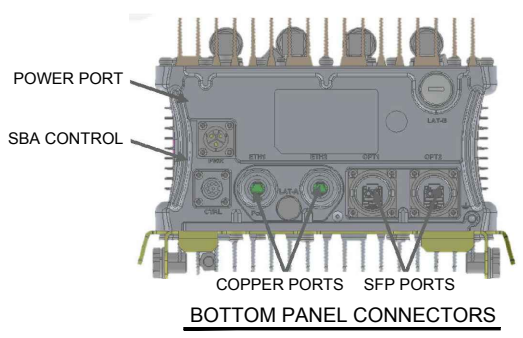
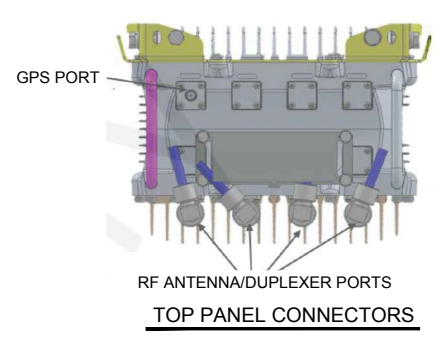
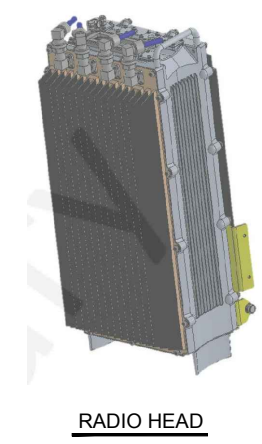
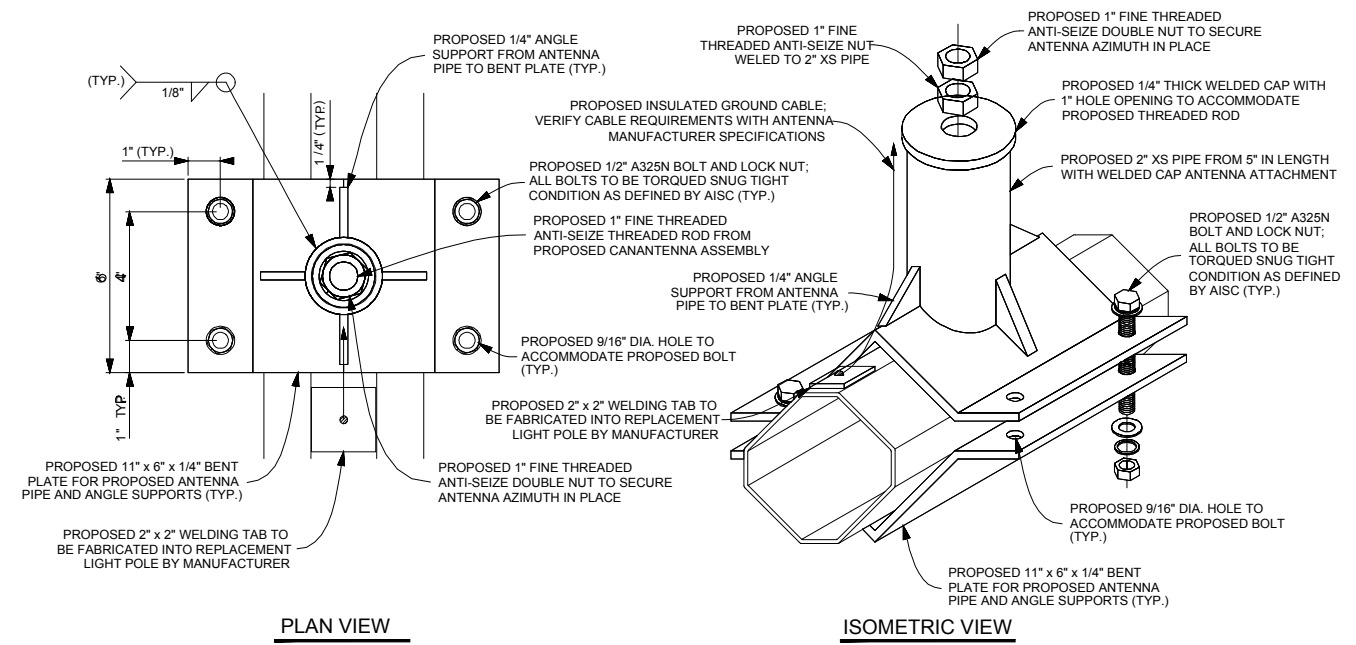
NOTE:
INSTALL BRACKETS WITH
STAINLESS STEEL BANDING.



2 EQUIPMENT BANDING DETAIL
SCALE: N.T.S.



3 AC DISTRIBUTION PANEL DETAIL
SCALE: N.T.S.



4 AIRHARMONY AH4000 RADIO HEAD
SCALE: N.T.S.

SPECIFICATIONS	
HEIGHT	20.0 INCHES (510mm)
WIDTH	9.0 INCHES (230mm)
DEPTH	9.0 INCHES (227mm)
WEIGHT	42 LBS (19kg)



BUELL CONSULTING INC.
1360 ENERGY PARK DRIVE, SUITE 210
ST. PAUL, MN 55108
(651) 225-0793
www.buellconsulting.com

TERRA CONSULTING GROUP, LTD.
600 BUSSE HIGHWAY
PARK RIDGE, IL 60068
(847) 698-6400

NO.	DESCRIPTION	BY	DATE

**MOBILITIE ID/
CASCADE ID**

**TYPICAL
INSTALLATION #2**

ADDRESS
SAINT PAUL, MN

DRAWN BY:
CHECKED BY:
DATE:
PROJECT #:

SHEET TITLE
**ANTENNA & EQUIPMENT
DETAILS**

SHEET NUMBER

ANT-3

UTILITY NOTES:

WORK INCLUDES:

THESE NOTES AND ACCOMPANYING DRAWINGS COMPLEMENT THE PROVISIONS AND INSTALLATIONS BY THE ELECTRICAL CONTRACTOR, OF ALL LABOR, MATERIALS AND EQUIPMENT REQUIRED TO INSTALL THE ELECTRICAL WORK COMPLETE IN CONNECTION WITH THIS CELLULAR SITE AND SHALL INCLUDE, BUT NOT BE LIMITED TO THE FOLLOWING:

1. THE PROVISIONS, INSTALLATION AND CONNECTION OF A GROUNDING ELECTRODE SYSTEM COMPLETE WITH SECONDARY GROUNDING, AND CONNECTIONS TO THE INCOMING ELECTRICAL DISTRIBUTION EQUIPMENT.
2. THE PROVISION AND INSTALLATION OF AN OVERHEAD ELECTRICAL SERVICE OR UNDERGROUND ELECTRICAL SERVICE AND ALL ASSOCIATED WIRE AND CONDUIT AS REQUIRED AND/OR INDICATED ON PLANS.
3. THE PROVISION AND INSTALLATION OF CONDUIT AND CONNECTIONS FOR LOCAL FIBER SERVICE.
4. THE FURNISHING AND INSTALLATION OF THE ELECTRICAL SERVICE ENTRANCE CONDUCTORS, CONDUITS, METER SOCKET, AND CONNECTIONS TO THE SERVICE EQUIPMENT.
5. ALL CONDUITS SHOULD BE LEFT WITH NYLON PULL CORD FOR FUTURE USE.
6. EXCAVATION, TRENCHING, AND BACKFILLING FOR CONDUIT(S), CABLE(S) AND EXTERNAL GROUNDING SYSTEM.

CODES, PERMITS AND FEES:

1. ALL REQUIRED PERMITS, LICENSES, INSPECTIONS AND APPROVALS SHALL BE SECURED AND ALL FEES FOR SAME PAID BY CONTRACTOR.
2. THE INSTALLATION SHALL COMPLY WITH ALL APPLICABLE CODES: STATE, LOCAL AND NATIONAL AND THE DESIGN, PERFORMANCE CHARACTERISTICS AND METHODS OF CONSTRUCTION OF ALL ITEMS AND EQUIPMENT SHALL BE IN ACCORDANCE WITH THE LATEST ISSUE OF THE VARIOUS APPLICABLE STANDARD SPECIFICATIONS OF THE FOLLOWING AUTHORITIES:

N.E.C.	NATIONAL ELECTRICAL CODE
A.N.S.I.	AMERICAN NATIONAL STANDARDS INSTITUTE
I.E.E.E.	INSTITUTE OF ELECTRICAL AND ELECTRONICS ENGINEERS
A.S.T.M.	AMERICAN SOCIETY FOR TESTING MATERIALS
N.E.M.A.	NATIONAL ELECTRICAL MANUFACTURERS ASSOCIATION
U.L.	UNDERWRITERS LABORATORIES, INC.
N.F.P.A.	NATIONAL FIRE PROTECTION ASSOCIATION

RACEWAYS AND WIRING:

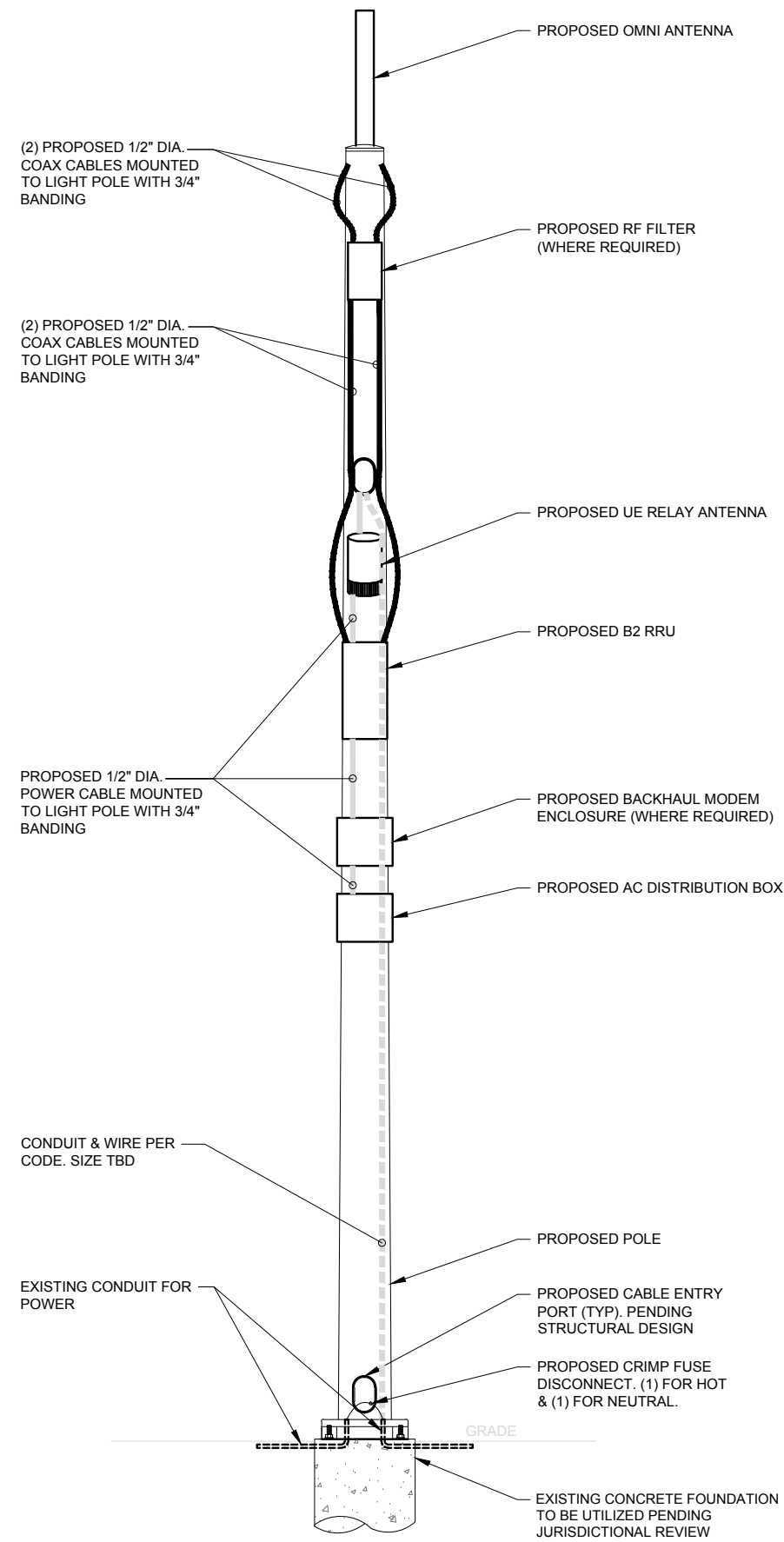
1. WIRING OF EVERY KIND MUST BE INSTALLED IN CONDUIT, UNLESS NOTED OTHERWISE, OR AS APPROVED BY THE ARCHITECT/ENGINEER.
2. UNLESS OTHERWISE SPECIFIED, ALL WIRING SHALL BE COPPER (CU) TYPE THWN, SIZED IN ACCORDANCE WITH THE NATIONAL ELECTRICAL CODE AND LOCAL CODES.
3. RACEWAYS SHALL BE GALVANIZED STEEL, SIZED IN ACCORDANCE WITH THE NATIONAL ELECTRICAL CODE AND LOCAL CODES UNLESS OTHERWISE NOTED. ALL RACEWAYS SHALL BE APPROVED FOR THE INSTALLATION.
4. PULL OR JUNCTION BOXES SHALL BE PROVIDED AS REQUIRED TO FACILITATE INSTALLATION OF RACEWAYS AND WIRING. PROVIDE JUNCTION AND PULLBOXES FOR CONDUIT RUNS WITH MORE THAN (360) DEGREES OF BENDS.
5. PROVIDE A COMPLETE RACEWAY AND WIRING INSTALLATION, PERMANENTLY AND EFFECTIVELY GROUNDED IN ACCORDANCE WITH ARTICLE 250 OF THE NATIONAL ELECTRICAL CODE AND LOCAL CODES.
6. ALL STEEL CONDUIT SHALL BE BONDED AT BOTH ENDS WITH GROUNDING BUSHING.

GENERAL NOTES:

SEE DETAILS, SCHEDULES AND SPECIFICATIONS FOR ADDITIONAL REQUIREMENTS AND INFORMATION. CHECK ARCHITECTURAL, STRUCTURAL, AND OTHER MECHANICAL AND ELECTRICAL DRAWINGS FOR SCALE, SPACE LIMITATIONS, COORDINATION, AND ADDITIONAL INFORMATION, ETC. REPORT ANY DISCREPANCIES, CONFLICTS, ETC. TO ARCHITECT/ENGINEER BEFORE SUBMITTING BID. ALL EQUIPMENT FURNISHED BY OTHERS (FBO) SHALL BE PROVIDED WITH PROPER MOTOR STARTERS, DISCONNECTS, CONTROLS, ETC. BY THE ELECTRICAL CONTRACTOR UNLESS SPECIFICALLY NOTED OTHERWISE. THE ELECTRICAL CONTRACTOR SHALL INSTALL AND COMPLETELY WIRE ALL ASSOCIATED EQUIPMENT IN ACCORDANCE WITH MANUFACTURER'S WIRE DIAGRAMS AND AS REQUIRED FOR A COMPLETE OPERATING INSTALLATION. ELECTRICAL CONTRACTOR SHALL VERIFY AND COORDINATE ELECTRICAL CHARACTERISTICS AND REQUIREMENTS OF (FBO) EQUIPMENT PRIOR TO ROUGH-IN OF CONDUIT AND WIRING TO AVOID CONFLICTS.

COORDINATION WITH UTILITY COMPANY:

THE ELECTRICAL CONTRACTOR SHALL COORDINATE COMPLETE ELECTRICAL SERVICE WITH LOCAL UTILITY COMPANY FOR A COMPLETE OPERATIONS SYSTEM, INCLUDING TRANSFORMER CONNECTIONS, CONCRETE TRANSFORMER PADS, IF REQUIRED, METER SOCKETS, PRIMARY CABLE RACEWAY REQUIREMENTS, SECONDARY SERVICE, ETC. PRIOR TO SUBMITTING BID TO INCLUDE ALL LABOR AND MATERIALS. THE ELECTRICAL CONTRACTOR SHALL INCLUDE IN THE BID ANY OPTIONAL OR EXCESS FACILITY CHARGES ASSOCIATED WITH PROVIDING ELECTRICAL SERVICE FROM LOCAL UTILITY COMPANY. VERIFY BEFORE BIDDING TO INCLUDE ALL COSTS. THE ELECTRICAL CONTRACTOR SHALL VERIFY THE AVAILABLE FAULT CURRENT WITH THE LOCAL UTILITY COMPANY PRIOR TO SUBMITTING BID. ADJUST A.I.C. RATINGS OF ALL OVER CURRENT PROTECTION DEVICES IN DISTRIBUTION EQUIPMENT AS REQUIRED TO COORDINATE WITH AVAILABLE FAULT CURRENT FROM LOCAL UTILITY COMPANY.



NOTE:
CABLING DIAGRAM IS FOR CLARITY OF CABLE ROUTE AND TERMINATION ONLY. CONTRACTOR SHALL INSTALL CABLES WITH MINIMAL VISUAL IMPACT ON EXISTING STEEL POLE. SEE ELEVATION DRAWING FOR EQUIPMENT AND ANTENNA LOCATIONS.



BUELL CONSULTING INC.
1360 ENERGY PARK DRIVE, SUITE 210
ST. PAUL, MN 55108
(651) 225-0793
www.buellconsulting.com

TERRA CONSULTING GROUP, LTD.
600 BUSSE HIGHWAY
PARK RIDGE, IL 60068
(847) 698-6400

NO.	DESCRIPTION	REVISIONS	
		DATE	BY

**MOBILITIE ID/
CASCADE ID**

**TYPICAL
INSTALLATION #2**

ADDRESS
SAINT PAUL, MN

DRAWN BY: _____
 CHECKED BY: _____
 DATE: _____
 PROJECT #: _____

SHEET TITLE
ELECTRICAL DETAILS

SHEET NUMBER
E-1

1 CABLING DIAGRAM
N.T.S.