

Exhibit D

D) DOC. NO. T1024919 AND A2730991

Request for Certificates of Intended Non-Use (CINU)
U. S. West Communications, Inc.

Description of Portion to be Released

That part of the Easement retained within Clear Avenue, vacated per Document No. T1024919 and A2730991, as recorded in Ramsey County, Minnesota described as follows:

That part of vacated Clear Avenue lying between Arcade Street and the west line of the east 13.00 feet of Lot 26, Block 3, KING'S ARCADE PARK, Ramsey County, Minnesota, extended southerly across said Clear Avenue,

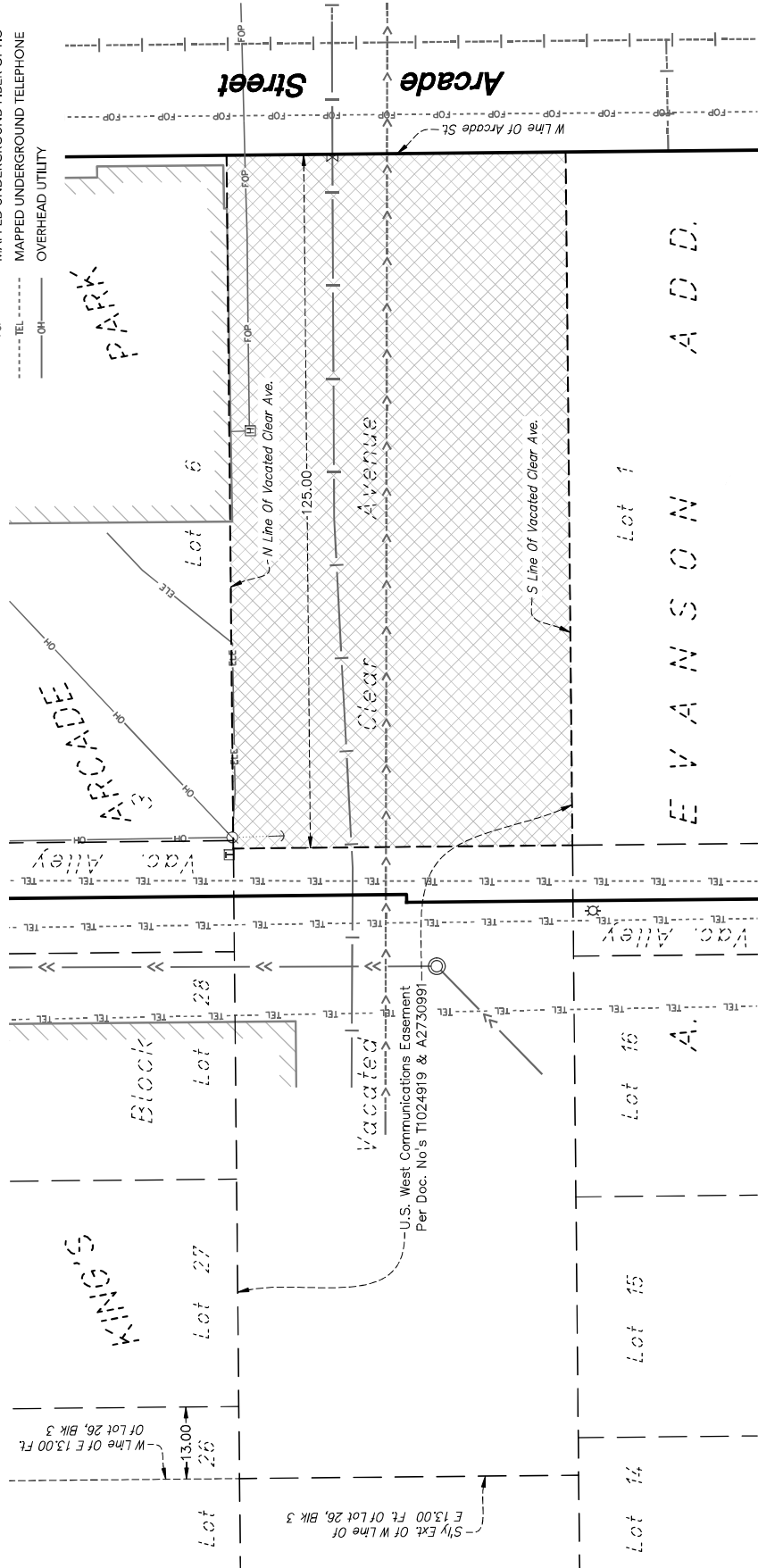
lying east of a line 125.00 feet westerly of the west line of Arcade Street and west of the west line of Arcade Street.

LEGEND

- ⊙ STORM MAINHOLE
- ⊗ GATE VALVE
- ⊕ LIGHT POLE
- ⊖ POWER POLE
- ⊚ ELECTRIC TRANSFORMER
- ← GUY WIRE
- ⊞ HAND HOLE
- ⊟ TELEPHONE PEDESTAL
- ⊠ EXISTING BUILDING
- ⊡ STORM SEWER
- ⊢ MAPPED SANITARY SEWER
- ⊣ WATERMAIN
- ⊤ MAPPED WATERMAIN
- ⊥ UNDERGROUND ELECTRIC
- ⊦ UNDERGROUND FIBER OPTIC
- ⊧ MAPPED UNDERGROUND FIBER OPTIC
- ⊨ MAPPED UNDERGROUND TELEPHONE
- ⊩ OVERHEAD UTILITY



SCALE IN FEET
0 20



30K
ORGANIZATION
1331 ARCADE STREET
5TH FLOOR
ST. PAUL, MN 55106

STUDIO BV
MINNESOTA LAND SURVEYING
UNIVERSITY AVENUE
MINNEAPOLIS, MN 55455

LOUCKS
PLANNING
ENGINEERING
LAND SURVEYING
LANDSCAPE ARCHITECTURE
ENVIRONMENTAL
7200 Humboldt Lane, Suite 300
Maple Grove, MN 55127
763.424.5505
www.loucksinc.com

CAD/CADD QUALIFICATION
I have completed the course and understand the requirements of the Minnesota Board of Professional Engineers, Board of Professional Land Surveyors, Board of Professional Architects, and Board of Professional Environmental Engineers. I am a duly Licensed Professional Engineer, Professional Land Surveyor, Professional Architect, and Professional Environmental Engineer. I am qualified to perform the duties of a Professional Engineer, Professional Land Surveyor, Professional Architect, and Professional Environmental Engineer. I am qualified to prepare and seal drawings for the Board of Professional Engineers, Board of Professional Land Surveyors, Board of Professional Architects, and Board of Professional Environmental Engineers. I am qualified to supervise the work of other professionals and to accept responsibility for the work of other professionals. I am qualified to accept responsibility for the work of other professionals. I am qualified to accept responsibility for the work of other professionals.

SUBMITTALS/REVISIONS
01/17/24
EXHIBIT ISSUED

PROFESSIONAL SIGNATURE
I hereby certify that the drawings, plans or reports were prepared by me or under my direct supervision and that I am a duly Licensed Professional Engineer, Professional Land Surveyor, Professional Architect, and Professional Environmental Engineer. I am qualified to perform the duties of a Professional Engineer, Professional Land Surveyor, Professional Architect, and Professional Environmental Engineer. I am qualified to prepare and seal drawings for the Board of Professional Engineers, Board of Professional Land Surveyors, Board of Professional Architects, and Board of Professional Environmental Engineers. I am qualified to supervise the work of other professionals and to accept responsibility for the work of other professionals. I am qualified to accept responsibility for the work of other professionals.

QUALITY CONTROL
01/17/24
LOUCKS Project No. 23474A
Project Lead DJT
Checked By DJT
Field Crew SKS

VICINITY MAP
A map showing the project location within a street grid. The project is located at the intersection of Clear Avenue and the west line of Arcade Street. The map shows surrounding streets including King's Arcade Park, Evanson A.D.D., and various residential streets.

CINU FOR
U. S. WEST
EXHIBIT
4 OF 4