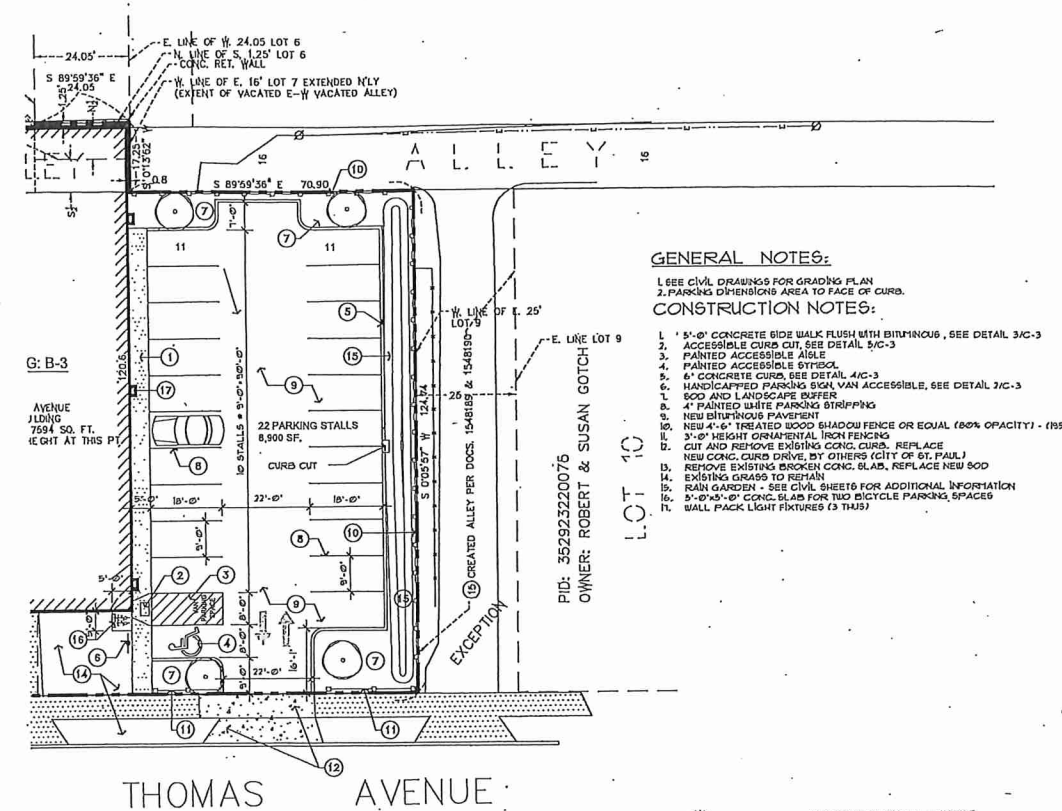
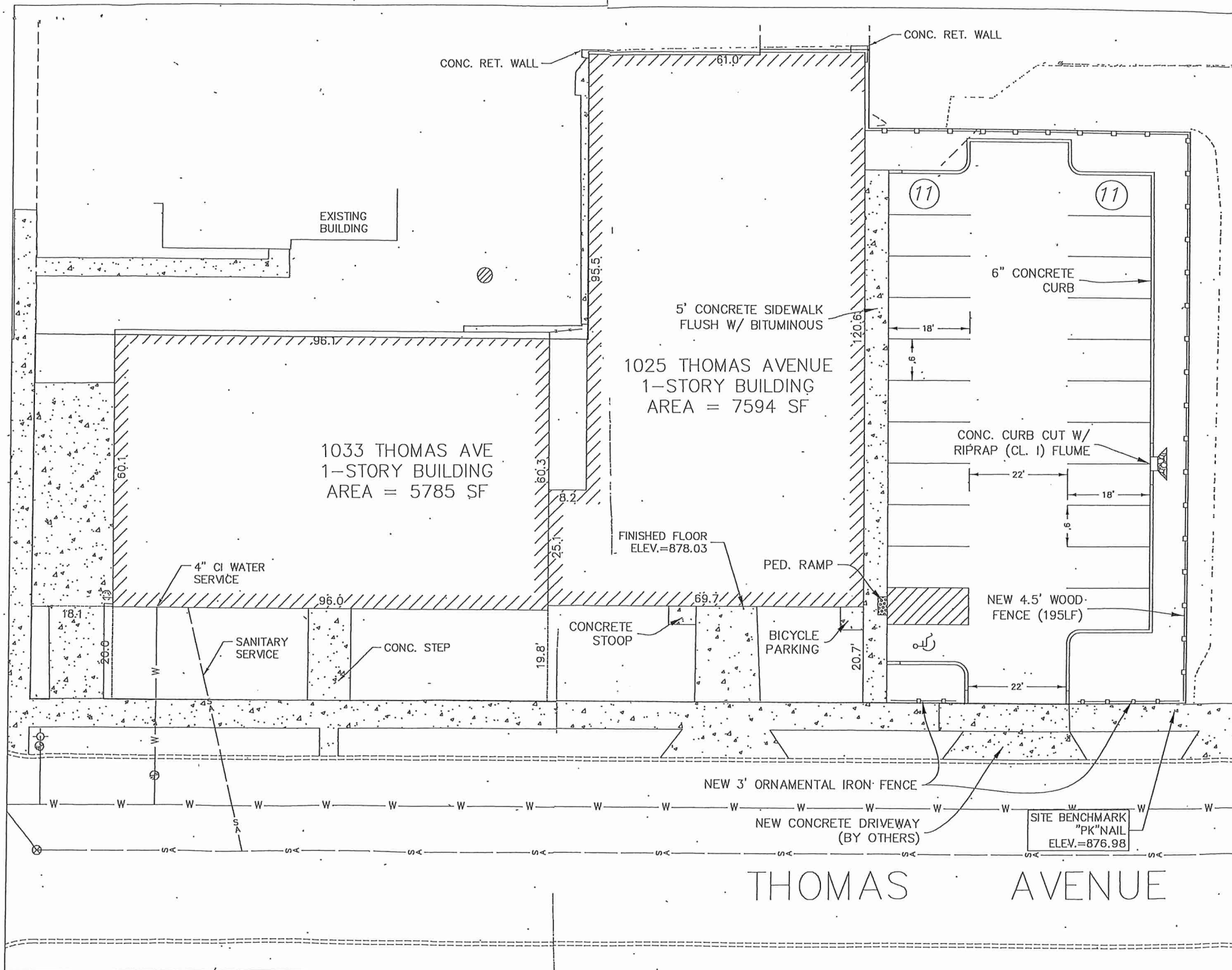
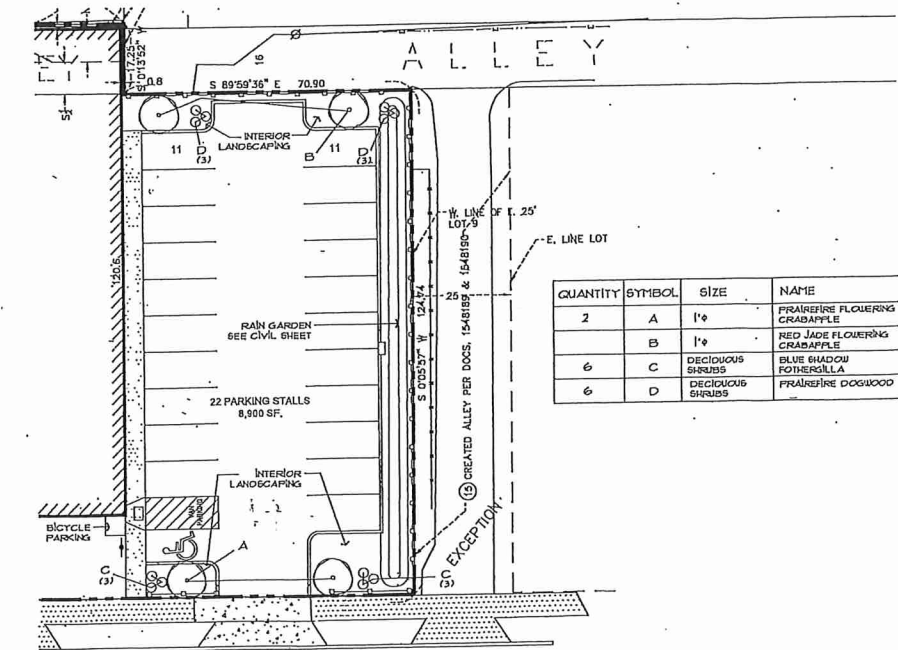
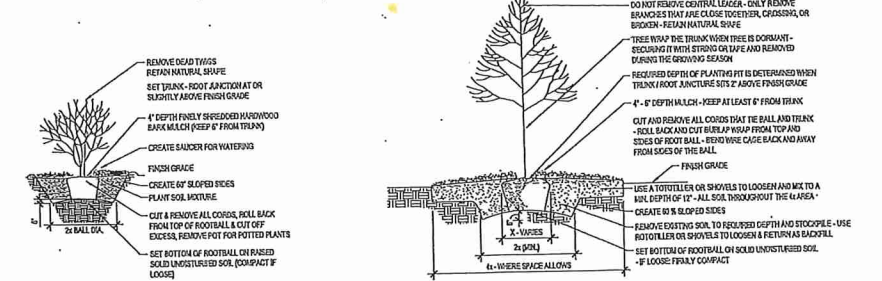


SITE PLAN APPROVED
OFFICE OF DSI
CITY OF ST. PAUL

By *[Signature]*
 File # 17-066013 Date 10-23-17
 Any alterations from this plan must be approved by the Zoning Administrator.



- GENERAL NOTES:**
- SEE CIVIL DRAWINGS FOR GRADING PLAN
 - PARKING DIMENSIONS AREA TO FACE OF CURB.
- CONSTRUCTION NOTES:**
- 5'-0" CONCRETE SIDE WALK FLUSH WITH BITUMINOUS, SEE DETAIL 3/C-3
 - ACCESSIBLE CURB CUT, SEE DETAIL 3/C-3
 - PAINTED ACCESSIBLE AISLE
 - PAINTED ACCESSIBLE SYMBOL
 - 6" CONCRETE CURB, SEE DETAIL 4/C-3
 - HANDICAPPED PARKING SIGN VAN ACCESSIBLE, SEE DETAIL 3/C-3
 - WOOD AND LANDSCAPE BUFFER
 - 4" PAINTED WHITE PARKING STRIPING
 - NEW BITUMINOUS PAVEMENT
 - NEW 4'-6" TREATED WOOD SHADOW FENCE OR EQUAL (50% OPACITY) - 1955
 - 3'-0" HEIGHT ORNAMENTAL IRON FENCING
 - CUT AND REMOVE EXISTING CONC. CURBS, REPLACE NEW CONC. CURB DRIVE, BY OTHERS (CITY OF ST. PAUL)
 - REMOVE EXISTING BROKEN CONC. SLAB, REPLACE NEW GOOD EXISTING GRASS TO REMAIN
 - RAIN GARDEN - SEE CIVIL SHEET FOR ADDITIONAL INFORMATION
 - 3'-0" X 4'-0" CONC. SLAB FOR TWO BICYCLE PARKING SPACES
 - WALL PACK LIGHT FIXTURES (3 THIS)



1 LANDSCAPE PLAN