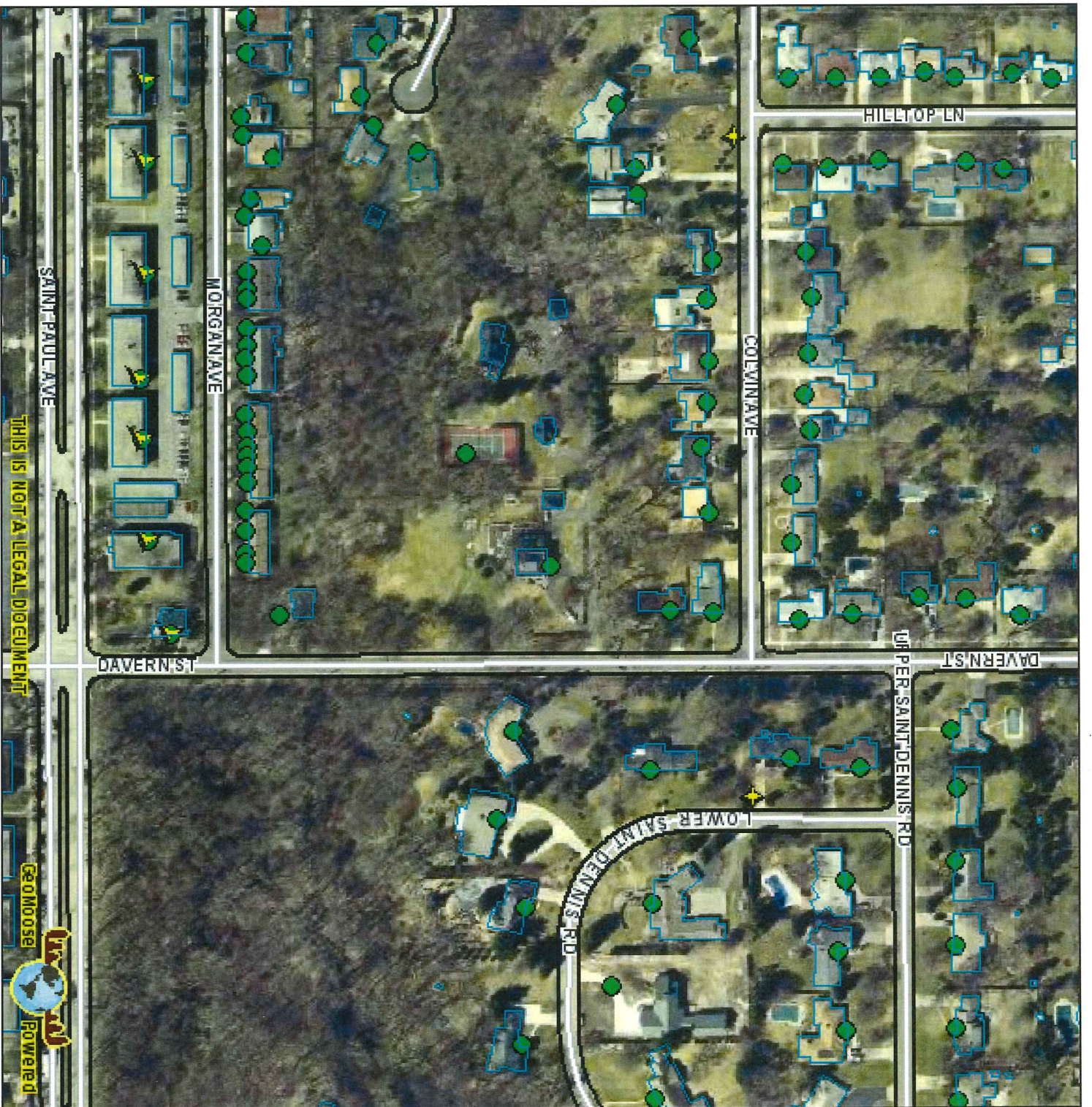


- WATER TOWERS
- WATERLINE
- DAMS
- AIRPORTS
- BRIDGES
- STRUCTURES
- CURBS
- RAILROAD
- Railroad
- PRIMARY
- SECONDARY
- UNOFFICIAL ALIANS
- LANDLOCKED
- PROVISIONAL
- Interstate
- Highway or County Road
- Local Road
- Ramp
- Other Street
- WATER



2011



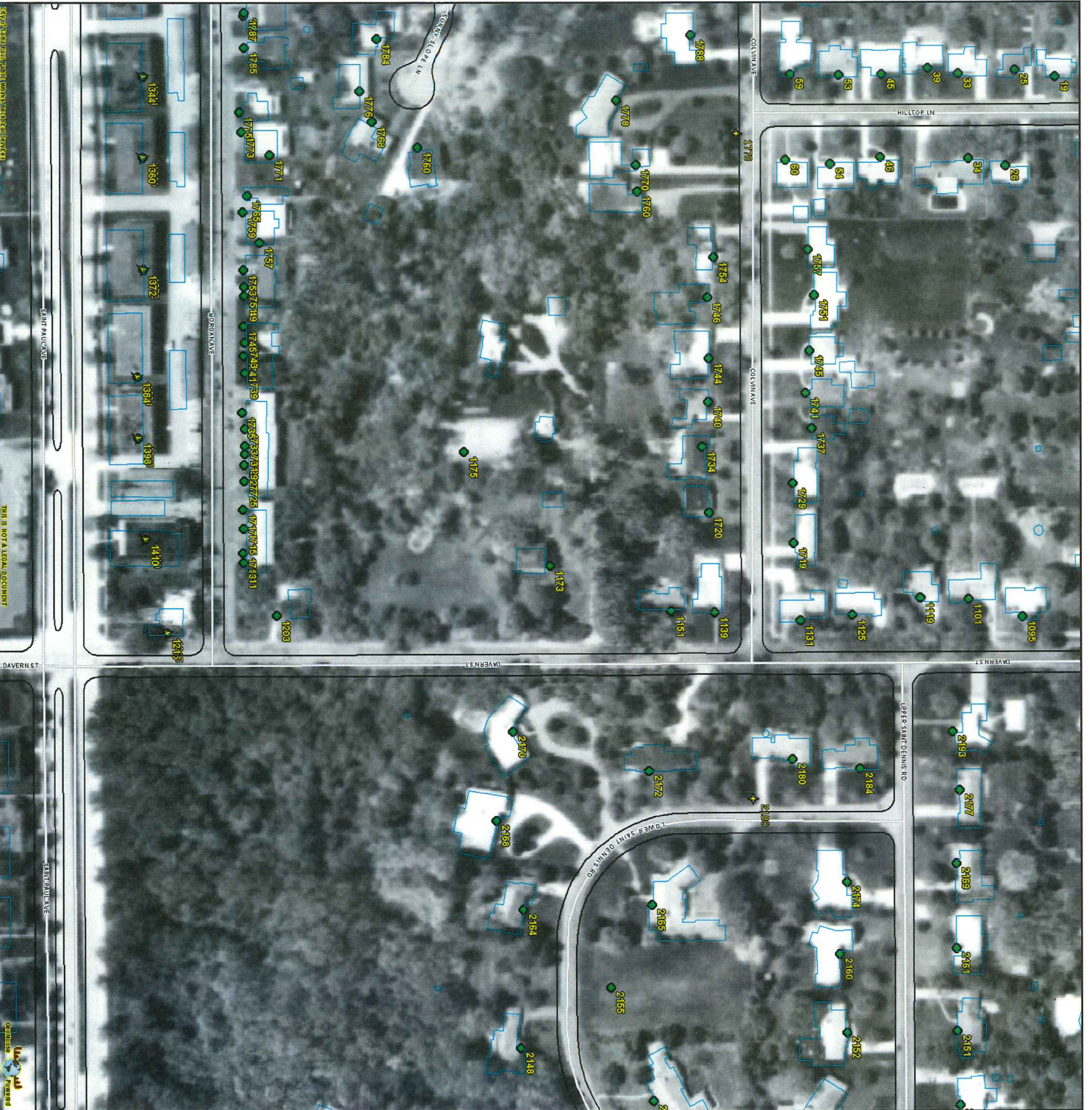
THIS IS NOT A LEGAL DOCUMENT



- WATER TOWERS
- WATERLINE
- DAMS
- AIRPORTS
- BRIDGES
- STRUCTURES
- CURBS
- RAILROAD
- Railroad
- PRIMARY
- SECONDARY
- OTHER
- UNOFFICIAL ALIENS
- LANDLOCKED
- PROVISIONAL
- Interstate
- Highway or County Road
- Local Road
- Ramp
- Other Street
- WATER



2003



	WATER TOWERS
	WATERLINE
	DAMS
	AIRPORTS
	BRIDGES
	STRUCTURES
	CURBS
	RAILROAD
	Railroad
	PRIMARY
	SECONDARY
	OTHER
	UNOFFICIAL ALIENS
	LANDLOCKED
	PROVISIONAL
	Interstate
	Highway or County Road
	Local Road
	Ramp
	Other Street
	WATER



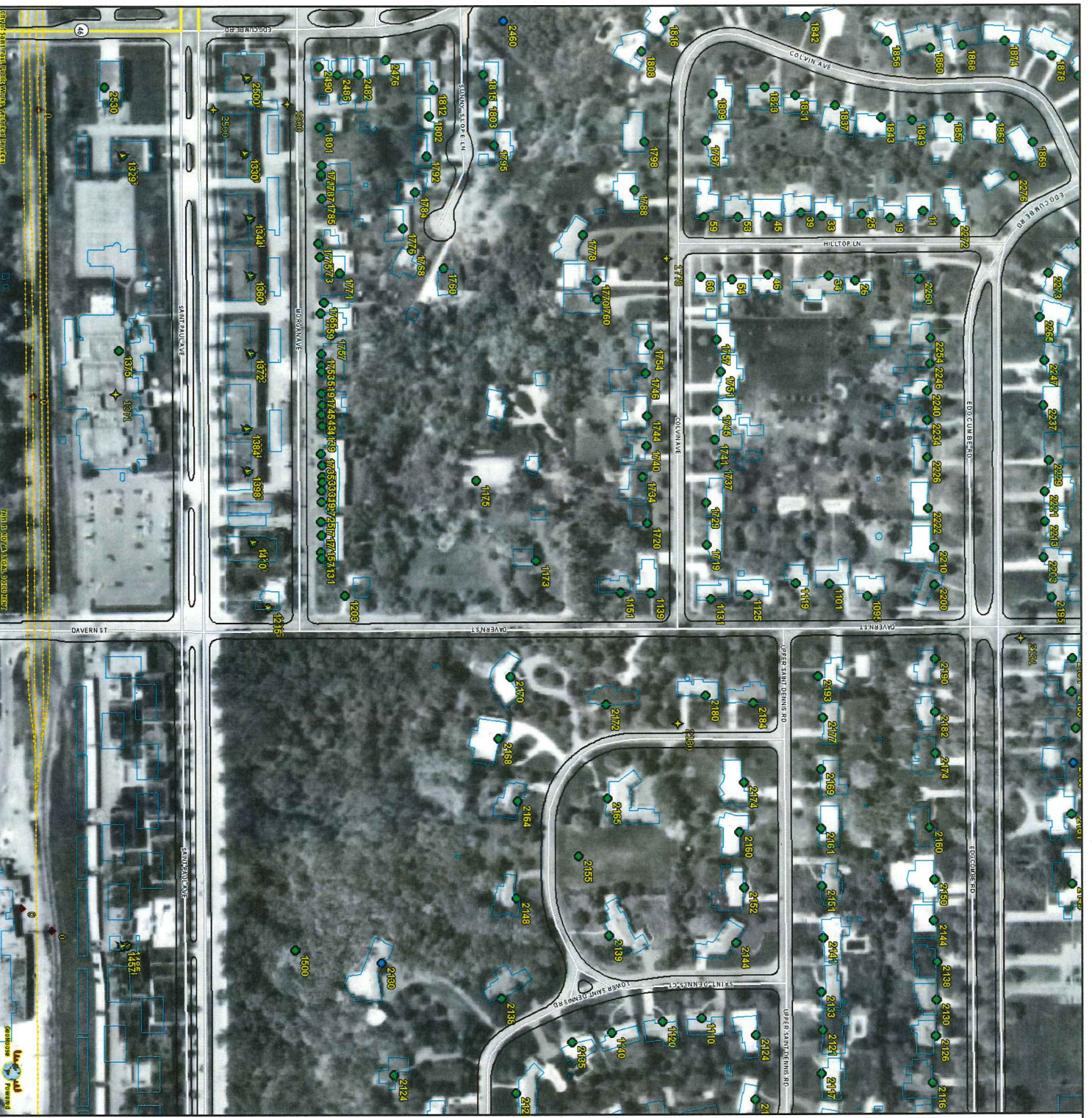
188

Copyright 2004 by the copyright owner. All rights reserved.

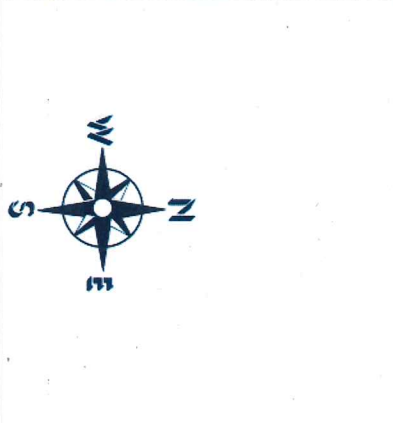
DAVENPORT ST

SLANT DOWNS RD

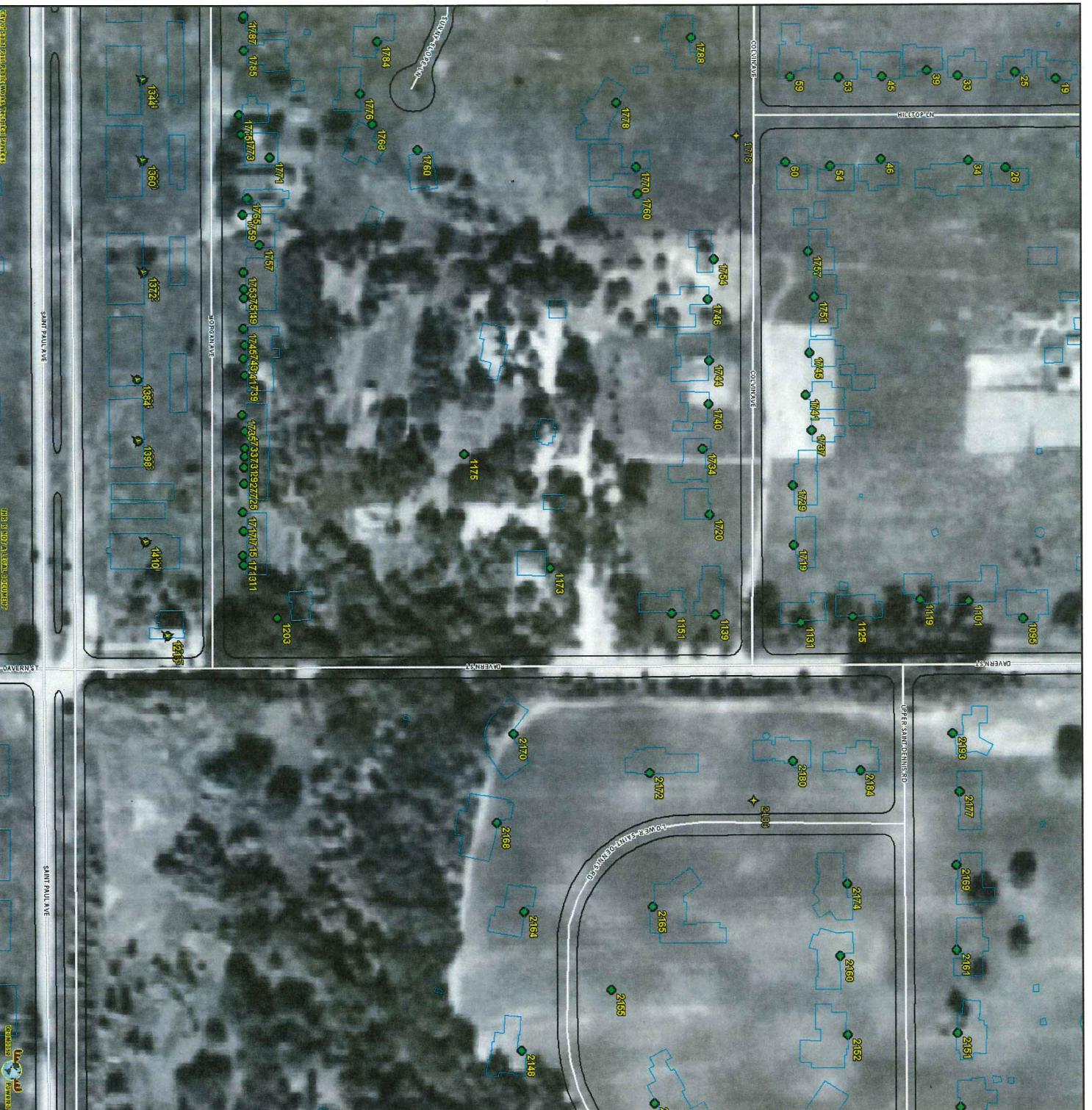
Map 2 All
Reviewed



- WATER TOWERS
- WATERLINE
- DAMS
- AIRPORTS
- BRIDGES
- STRUCTURES
- CURBS
- RAILROAD
- Railroad
- PRIMARY
- SECONDARY
- OTHER
- UNOFFICIAL ALIARS
- LANDLOCKED
- PROVISIONAL
- Interstate
- Highway or County Road
- Local Road
- Ramp
- Other Street
- WATER



1985



1940



4/1983



4/1983