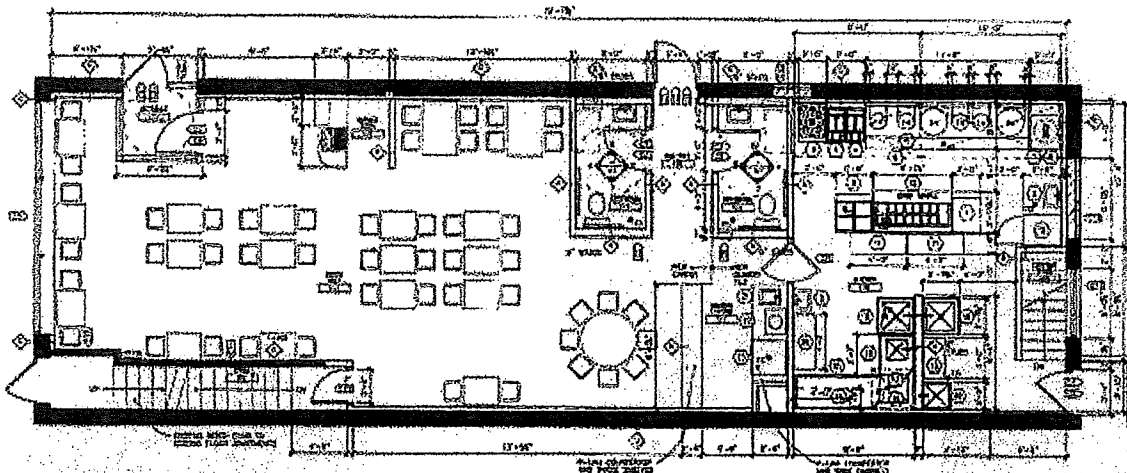


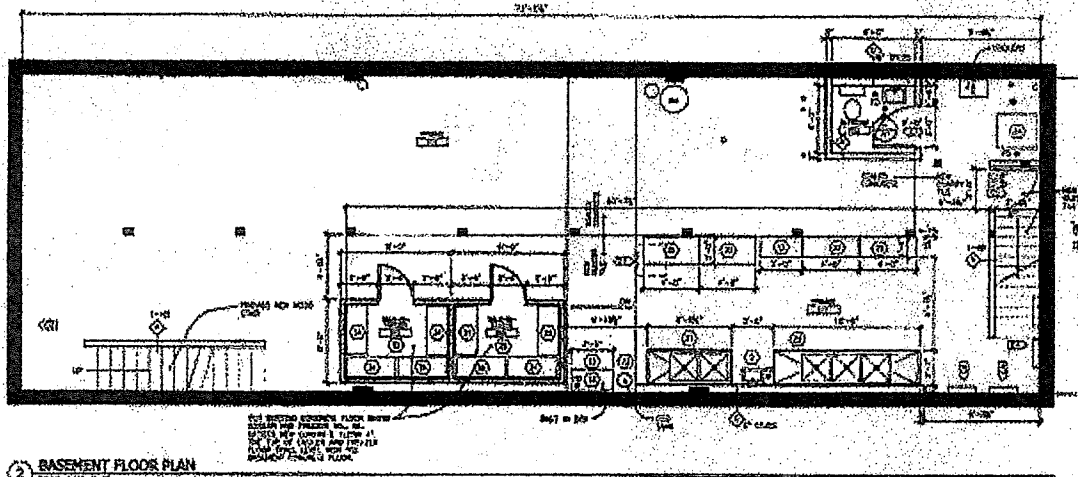
Signature

X Karla L. Marta Mejia

01-26-24



1 FIRST FLOOR PLAN
DATE 1/15/24



2 BASEMENT FLOOR PLAN
DATE 1/15/24

CONSTRUCTION NOTES	
101	REMOVE EXISTING PARTS AND REPAIR REMAINING PARTS. SEE PLAN FOR DETAILS.
102	REMOVE EXISTING PARTS AND REPAIR REMAINING PARTS. SEE PLAN FOR DETAILS.
103	REMOVE EXISTING PARTS AND REPAIR REMAINING PARTS. SEE PLAN FOR DETAILS.
104	REMOVE EXISTING PARTS AND REPAIR REMAINING PARTS. SEE PLAN FOR DETAILS.
105	REMOVE EXISTING PARTS AND REPAIR REMAINING PARTS. SEE PLAN FOR DETAILS.
106	REMOVE EXISTING PARTS AND REPAIR REMAINING PARTS. SEE PLAN FOR DETAILS.
107	REMOVE EXISTING PARTS AND REPAIR REMAINING PARTS. SEE PLAN FOR DETAILS.
108	REMOVE EXISTING PARTS AND REPAIR REMAINING PARTS. SEE PLAN FOR DETAILS.
109	REMOVE EXISTING PARTS AND REPAIR REMAINING PARTS. SEE PLAN FOR DETAILS.
110	REMOVE EXISTING PARTS AND REPAIR REMAINING PARTS. SEE PLAN FOR DETAILS.
111	REMOVE EXISTING PARTS AND REPAIR REMAINING PARTS. SEE PLAN FOR DETAILS.
112	REMOVE EXISTING PARTS AND REPAIR REMAINING PARTS. SEE PLAN FOR DETAILS.
113	REMOVE EXISTING PARTS AND REPAIR REMAINING PARTS. SEE PLAN FOR DETAILS.
114	REMOVE EXISTING PARTS AND REPAIR REMAINING PARTS. SEE PLAN FOR DETAILS.
115	REMOVE EXISTING PARTS AND REPAIR REMAINING PARTS. SEE PLAN FOR DETAILS.
116	REMOVE EXISTING PARTS AND REPAIR REMAINING PARTS. SEE PLAN FOR DETAILS.
117	REMOVE EXISTING PARTS AND REPAIR REMAINING PARTS. SEE PLAN FOR DETAILS.
118	REMOVE EXISTING PARTS AND REPAIR REMAINING PARTS. SEE PLAN FOR DETAILS.
119	REMOVE EXISTING PARTS AND REPAIR REMAINING PARTS. SEE PLAN FOR DETAILS.
120	REMOVE EXISTING PARTS AND REPAIR REMAINING PARTS. SEE PLAN FOR DETAILS.

TIAN JIN RESTAURANT

1552 COMO AVENUE
ST. PAUL, MN

EQUIPMENT LIST					
NO.	DESCRIPTION	QUANTITY	MAKE	MODEL #	CFR
1	GRILL	1	NEW	FRIGIDAIRE	1
2	WARMER	1	NEW	FRIGIDAIRE	1
3	COFFEE MAKER	1	NEW	FRIGIDAIRE	1
4	TOASTER	1	NEW	FRIGIDAIRE	1
5	TOASTER	1	NEW	FRIGIDAIRE	1
6	TOASTER	1	NEW	FRIGIDAIRE	1
7	TOASTER	1	NEW	FRIGIDAIRE	1
8	TOASTER	1	NEW	FRIGIDAIRE	1
9	TOASTER	1	NEW	FRIGIDAIRE	1
10	TOASTER	1	NEW	FRIGIDAIRE	1
11	TOASTER	1	NEW	FRIGIDAIRE	1
12	TOASTER	1	NEW	FRIGIDAIRE	1
13	TOASTER	1	NEW	FRIGIDAIRE	1
14	TOASTER	1	NEW	FRIGIDAIRE	1
15	TOASTER	1	NEW	FRIGIDAIRE	1
16	TOASTER	1	NEW	FRIGIDAIRE	1
17	TOASTER	1	NEW	FRIGIDAIRE	1
18	TOASTER	1	NEW	FRIGIDAIRE	1
19	TOASTER	1	NEW	FRIGIDAIRE	1
20	TOASTER	1	NEW	FRIGIDAIRE	1
21	TOASTER	1	NEW	FRIGIDAIRE	1
22	TOASTER	1	NEW	FRIGIDAIRE	1
23	TOASTER	1	NEW	FRIGIDAIRE	1
24	TOASTER	1	NEW	FRIGIDAIRE	1
25	TOASTER	1	NEW	FRIGIDAIRE	1
26	TOASTER	1	NEW	FRIGIDAIRE	1
27	TOASTER	1	NEW	FRIGIDAIRE	1
28	TOASTER	1	NEW	FRIGIDAIRE	1
29	TOASTER	1	NEW	FRIGIDAIRE	1
30	TOASTER	1	NEW	FRIGIDAIRE	1
31	TOASTER	1	NEW	FRIGIDAIRE	1
32	TOASTER	1	NEW	FRIGIDAIRE	1
33	TOASTER	1	NEW	FRIGIDAIRE	1
34	TOASTER	1	NEW	FRIGIDAIRE	1
35	TOASTER	1	NEW	FRIGIDAIRE	1
36	TOASTER	1	NEW	FRIGIDAIRE	1
37	TOASTER	1	NEW	FRIGIDAIRE	1
38	TOASTER	1	NEW	FRIGIDAIRE	1
39	TOASTER	1	NEW	FRIGIDAIRE	1
40	TOASTER	1	NEW	FRIGIDAIRE	1
41	TOASTER	1	NEW	FRIGIDAIRE	1
42	TOASTER	1	NEW	FRIGIDAIRE	1
43	TOASTER	1	NEW	FRIGIDAIRE	1
44	TOASTER	1	NEW	FRIGIDAIRE	1
45	TOASTER	1	NEW	FRIGIDAIRE	1
46	TOASTER	1	NEW	FRIGIDAIRE	1
47	TOASTER	1	NEW	FRIGIDAIRE	1
48	TOASTER	1	NEW	FRIGIDAIRE	1
49	TOASTER	1	NEW	FRIGIDAIRE	1
50	TOASTER	1	NEW	FRIGIDAIRE	1

NO.	DESCRIPTION	DATE
1	ISSUED FOR PERMIT	1/15/24
2	REVISION	1/15/24
3	REVISION	1/15/24
4	REVISION	1/15/24
5	REVISION	1/15/24
6	REVISION	1/15/24
7	REVISION	1/15/24
8	REVISION	1/15/24
9	REVISION	1/15/24
10	REVISION	1/15/24

REVISION HISTORY - THIS SHEET

DLAAN
DESIGN & CONSTRUCTION
1552 COMO AVENUE
ST. PAUL, MN 55108

PROJECT NO. 24-0001
DATE: 1/15/24
DRAWN BY: KLM
CHECKED BY: KLM

Karla L. Marta Mejia
ARCHITECT
DATE: 1/15/24
PROJECT NO. 24-0001

FLOOR PLANS,
CONSTRUCTION NOTES,
EQUIPMENT LIST

1/15/24
1/15/24
1/15/24
1/15/24