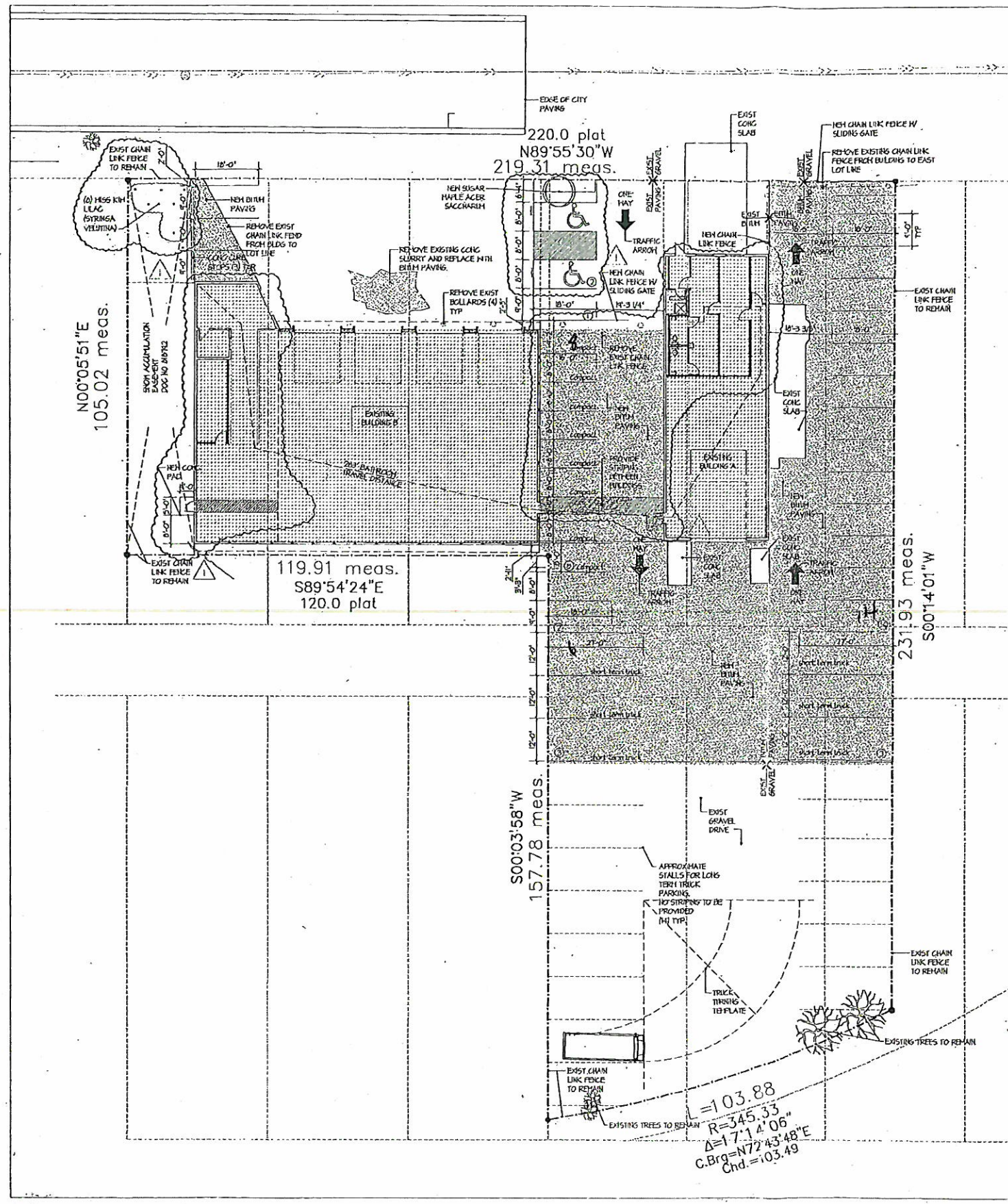


Do Not Surge

11" x 17"



SITE PLAN APPROVED
OFFICE OF LIEP
CITY OF ST. PAUL

By [Signature]
 File # 07-145389 Date 10/9/07
 Any alterations from this plan must be approved by the Zoning Administrator.

PARKING CALCULATIONS

BUILDING A
 792 SQ FT OFFICE
 1646 SQ FT TRUCK REPAIR
 2438 GSF
 PREDOMINANT USE- REPAIR
 1 REPAIR BAY

BUILDING B
 4478 SF - TRUCK REPAIR
 1744 SF - STORAGE

6222 SF TOTAL
 4 REPAIR BAYS

PAVING/EXIST BITUM. PAVING/CONC/GRAVEL
 TOTAL=25985 SQ FT

SPACES REQUIRED	USE	SQ FT	FACTOR	STALLS
STORAGE	1744	5/8		0.34
REPAIR	6916	1/3		25.15
5 BAYS				5.00
TOTAL SPACES REQUIRED				30.48
SPACES PROVIDED				
STANDARD	9 X 18			20
COMPACT	8 X 16			8
ACCESSIBLE	9 X 18			2
TRUCK (SHIRT TAIL)	12 X 27			6
TOTAL SPACES PROVIDED				36

- GENERAL SITE PLAN NOTES**
1. PROVIDE ACCESSIBLE POLE MOUNTED SIGNS IN FRONT OF ACCESSIBLE PARKING STALLS. SEE DETAIL.
 2. PROVIDE COMPACT STALL DESIGNATION SIGNS TO BE MOUNTED 4ft ABOVE GRADE, AND CENTERED ON EACH COMPACT SPACE. SIGNS TO BE MOUNTED ON BUILDINGS OR CHAIN LINK FENCE.
 3. EXISTING WEEDS IN THE GRAVEL AREA ARE TO BE REMOVED.
 4. REPAIR OR REPLACE ANY DAMAGED, BEIT OR MISSING ELEMENTS TO THE EXISTING CHAIN LINK FENCE, THAT IS TO REMAIN.
 5. PARKING STALLS SHALL BE 9'-0" X 10'-0" UNO.

PROGRESSIVE Architecture

275 EAST GURTH STREET, SUITE 320, ST. PAUL, MN 55101
 651-225-1061 F 651-762-0887 WWW.PROGRESSIVEARCH.COM

ISSUE DATE: ISSUED FOR:

REVISIONS:
 9/14/07
 PISC REVISIONS

DRAWN BY: PHJ
 CHECKED BY: SCH

THIS SITE PLAN HAS BEEN PREPARED BY ME OR UNDER MY SUPERVISION, OR REPORT WAS PREPARED BY ME OR UNDER MY SUPERVISION, AND I AM A FULLY LICENSED ARCHITECT UNDER THE LAWS OF THE STATE OF MINNESOTA.

SCOTT C. POWERS
 DATE: 8-28-07
 REG. NUMBER: 19826

TWIN CITIES FLEET REPAIR
 290 LARCH STREET
 SAINT PAUL, MN 55117

A1.1

