

## Summary of Engineering Recommendations

Report Prepared: 10/18/2024

Public Hearing: 4/9/2025

### PROJECT

Improve the east-west alley in Brunson's Addition, Block 11, Lots 1 to 12 (Alley Index 1137-UN bounded by 7<sup>th</sup> Street, Woodward, Railroad, and Payne) by grading and paving with bituminous material.

### INITIATING ACTION

This improvement was initiated by a property owner, with history of drainage issues.

### EXISTING CONDITIONS

The alley is platted 20 feet wide and dead-end up to the railroad right-of-way. The alley current condition is unimproved with gravel.

### PROPOSED IMPROVEMENT

The project seeks to improve the alleyway by reconstruction, including removing existing materials, constructing new gravel base materials and bituminous pavement. Driveway at alley access will be replaced as necessary for drainage purposes or upgraded to meet city standards.

Storm sewers system will be included when necessary and recommended by Public Works.

### ESTIMATED COST AND FINANCING

Estimated Construction Cost	\$ 107,595.00
Engineering and Inspection (30%)	\$ 32,278.50
Contingency & Misc. (20%)	\$ 21,519.00
Real Estate Fee (8%)	\$ 8,607.50
<b>Estimated Total Expenditures</b>	<b>\$ 170,000.00</b>
Assessments (25% of project costs)	\$ 42,500.00
City Funds	\$ 127,500.00
<b>Estimated Total Financing</b>	<b>\$ 170,000.00</b>

### SOURCE OF ADDITIONAL INFORMATION

For additional information, contact Cheng Xiong at 651-266-6168

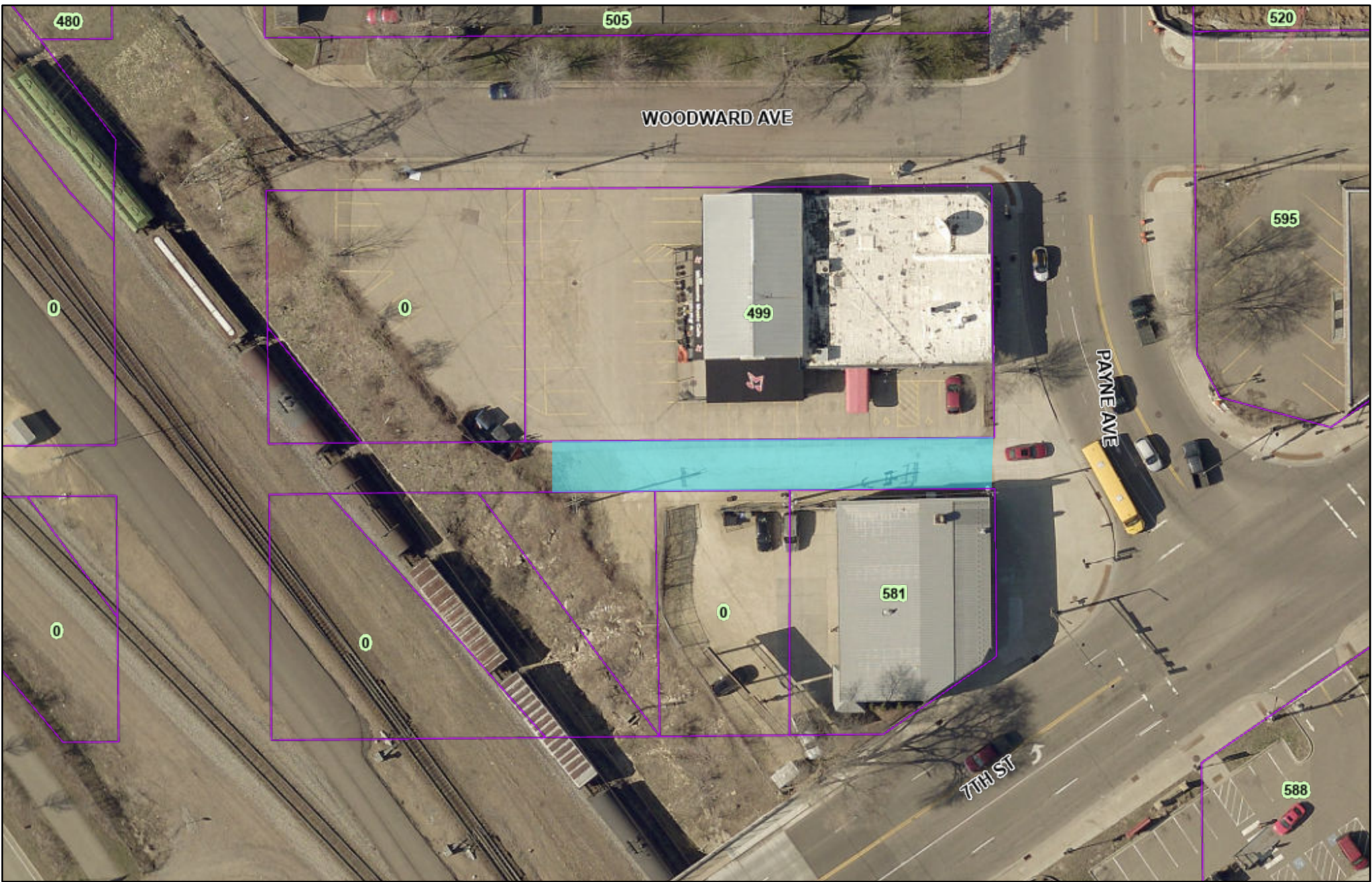
### SUMMARY OF RECOMMENDATIONS

The Department of Public Works has ranked this as a priority and the Engineering Recommendation is for approval of the project and funding.

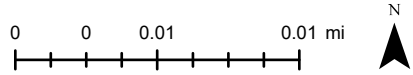
Respectfully submitted,

*Cheng Xiong*

Cheng Xiong, PE



City of Saint Paul - Public Works



The Geographic Information System (GIS) Data to which this notice is attached are made available pursuant to the Minnesota Government Data Practices Act (Minnesota Statutes Chapter 13). The GIS Data are provided to you "AS IS" and without any warranty as to their performance, merchantability, or fitness for any particular purpose. The GIS Data were developed by the City of Saint Paul for its own internal business purposes. The City of Saint Paul does not represent or warrant that the GIS Data or the data documentation are error-free, complete, current, or accurate. You are responsible for any consequences resulting from your use of the GIS Data or your reliance on the GIS Data. You should consult the data documentation for this particular GIS Data to determine the limitations of the GIS Data and the precision with which the GIS Data may depict distance, direction, location, or other geographic features. If you transmit or provide the GIS Data (or any portion of it) to another user, the GIS Data must include a copy of this disclaimer.