

# Exhibit A

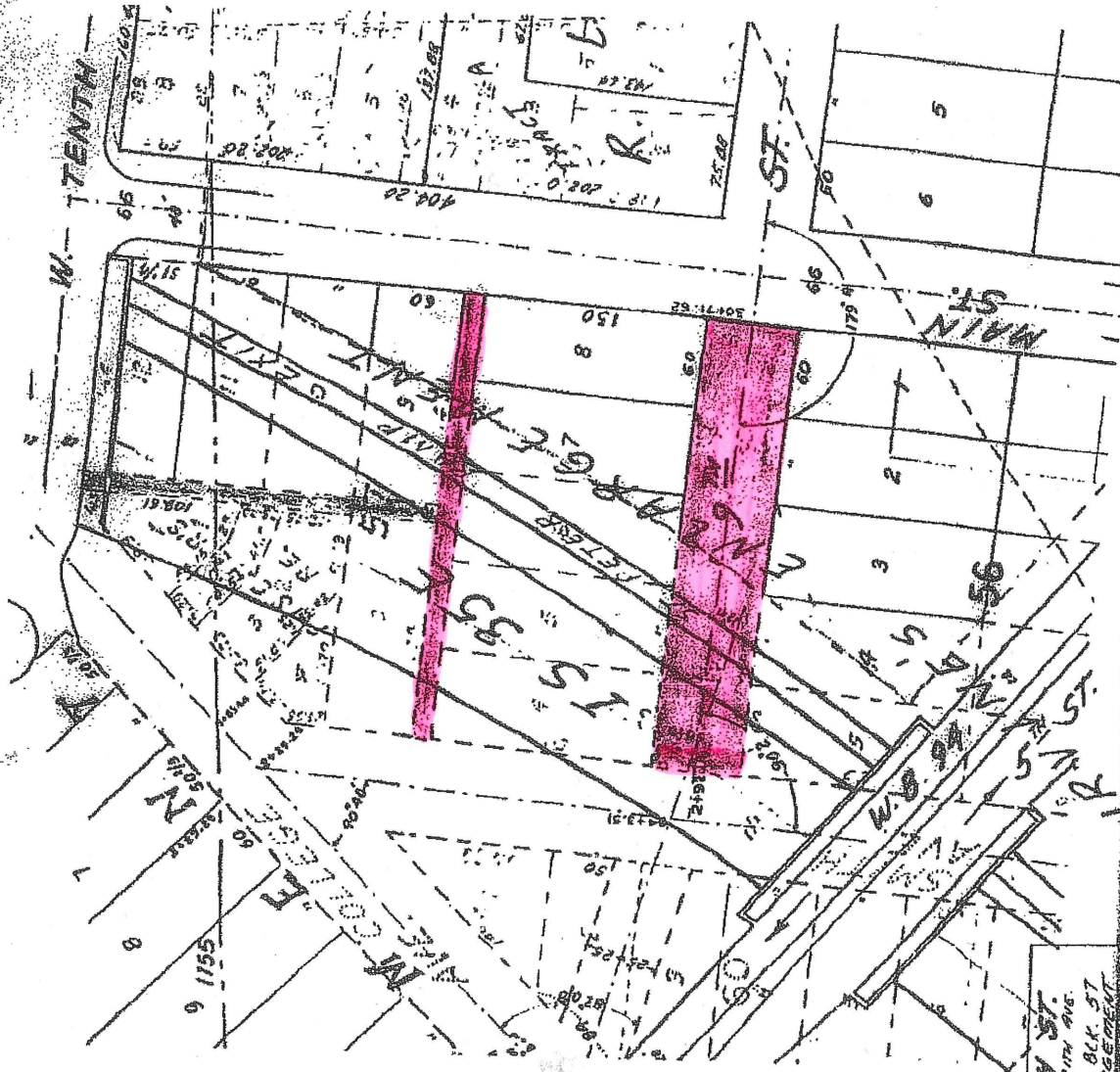
W. NINTH ST.

MAIN ST. - SMITH AVE.

N.S. EW ALLEYS, BLK. 57  
IRVINE'S ENLARGEMENT

VACATION

CITY OF ST. PAUL  
DEPT. OF PUBLIC WORKS  
NOV. 16, 1992  
SCALE: 1" = 100'



SURVEYED BY:  
JIMMY G. ...

11-30-92

J. ...

W. NINTH ST.  
MAIN ST. - SMITH AVE.  
N.S. EW ALLEYS, BLK. 57  
IRVINE'S ENLARGEMENT