

Date: February 13, 2013
File #: 07 - 204225
Folder Name: 988 ARGYLE ST
PIN: 262923230151



Date: February 13, 2013
File #: 07 - 204225
Folder Name: 988 ARGYLE ST
PIN: 262923230151



Date: February 13, 2013
File #: 07 - 204225
Folder Name: 988 ARGYLE ST
PIN: 262923230151



Date: February 13, 2013
File #: 07 - 204225
Folder Name: 988 ARGYLE ST
PIN: 262923230151



Date: February 13, 2013
File #: 07 - 204225
Folder Name: 988 ARGYLE ST
PIN: 262923230151



Date: February 13, 2013
File #: 07 - 204225
Folder Name: 988 ARGYLE ST
PIN: 262923230151



Date: February 13, 2013
File #: 07 - 204225
Folder Name: 988 ARGYLE ST
PIN: 262923230151



Date: February 13, 2013
File #: 07 - 204225
Folder Name: 988 ARGYLE ST
PIN: 262923230151



Date: February 13, 2013
File #: 07 - 204225
Folder Name: 988 ARGYLE ST
PIN: 262923230151



Date: February 13, 2013
File #: 07 - 204225
Folder Name: 988 ARGYLE ST
PIN: 262923230151



Date: February 13, 2013
File #: 07 - 204225
Folder Name: 988 ARGYLE ST
PIN: 262923230151



Date: February 13, 2013
File #: 07 - 204225
Folder Name: 988 ARGYLE ST
PIN: 262923230151



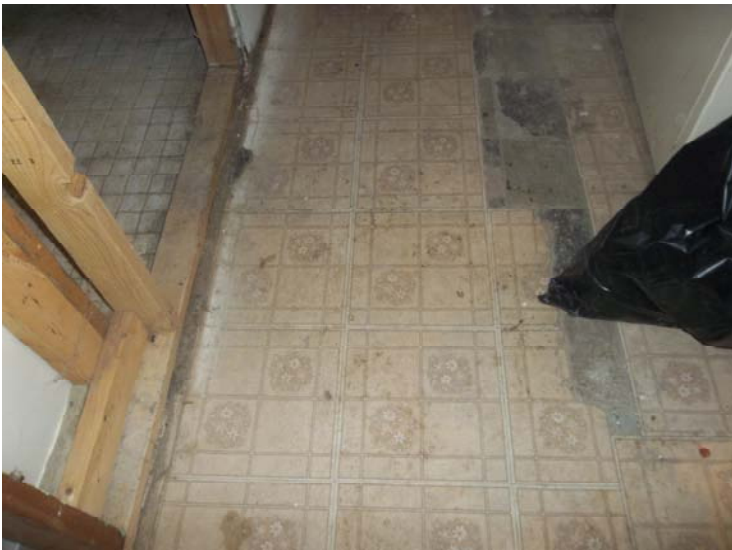
Date: February 13, 2013
File #: 07 - 204225
Folder Name: 988 ARGYLE ST
PIN: 262923230151



Date: February 13, 2013
File #: 07 - 204225
Folder Name: 988 ARGYLE ST
PIN: 262923230151



Date: February 13, 2013
File #: 07 - 204225
Folder Name: 988 ARGYLE ST
PIN: 262923230151



Date: February 13, 2013
File #: 07 - 204225
Folder Name: 988 ARGYLE ST
PIN: 262923230151



Date: February 13, 2013
File #: 07 - 204225
Folder Name: 988 ARGYLE ST
PIN: 262923230151



Date: February 13, 2013
File #: 07 - 204225
Folder Name: 988 ARGYLE ST
PIN: 262923230151



Date: February 13, 2013
File #: 07 - 204225
Folder Name: 988 ARGYLE ST
PIN: 262923230151



Date: February 13, 2013
File #: 07 - 204225
Folder Name: 988 ARGYLE ST
PIN: 262923230151



Date: February 13, 2013
File #: 07 - 204225
Folder Name: 988 ARGYLE ST
PIN: 262923230151



Date: February 13, 2013
File #: 07 - 204225
Folder Name: 988 ARGYLE ST
PIN: 262923230151

