

1" = approx 20'



Room 313
Missed to

Third Floor Evacuation Plan

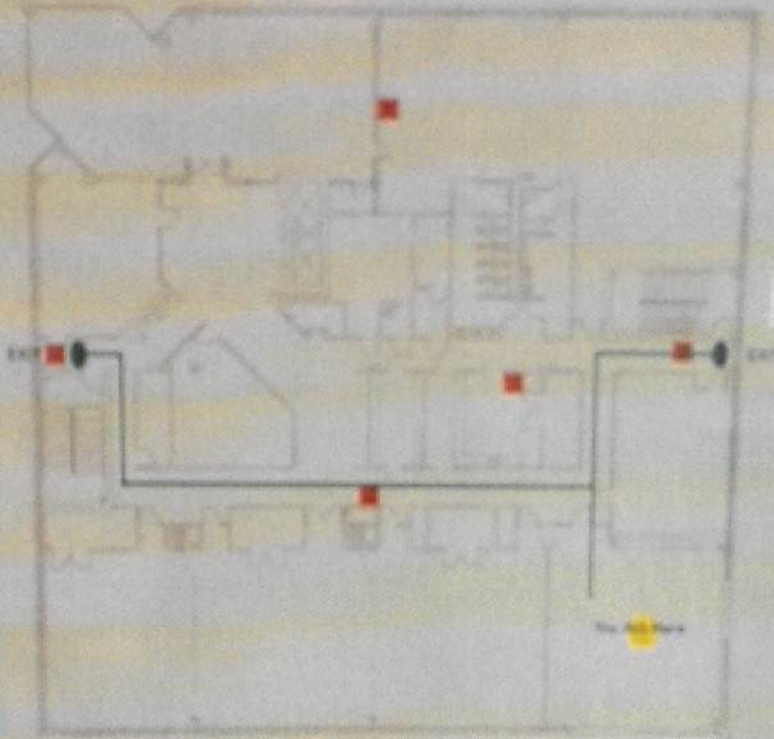
Fire Extinguisher



Fire Exit



Rm. 313
by Lit Exit
Door.



SPECIFIC USE POLICIES

The rooms are primarily intended for official county business and training, but are available to other groups at the discretion of the Executive Director. Rooms are not to be used for commercial enterprises, private conferences, meetings, any form of gambling, dances, craft projects, or other similar events.

Any group using the rooms must have adult leadership and supervision. The designated person will be considered responsible for the group's conduct.

The rooms are to be used "as is" and returned to original state before leaving the premises. Furniture is not to be moved about the building. If upon arriving at the facility you discover a need for additional or different accommodations, you must use the recreational. Do not take items from another room as you may be disturbing the accommodations that have been arranged for another group.

MCT assumes no responsibility for non-availability, loss, damage, injury or illness incurred by the users of the facility.

MCT is a smoke-free facility.

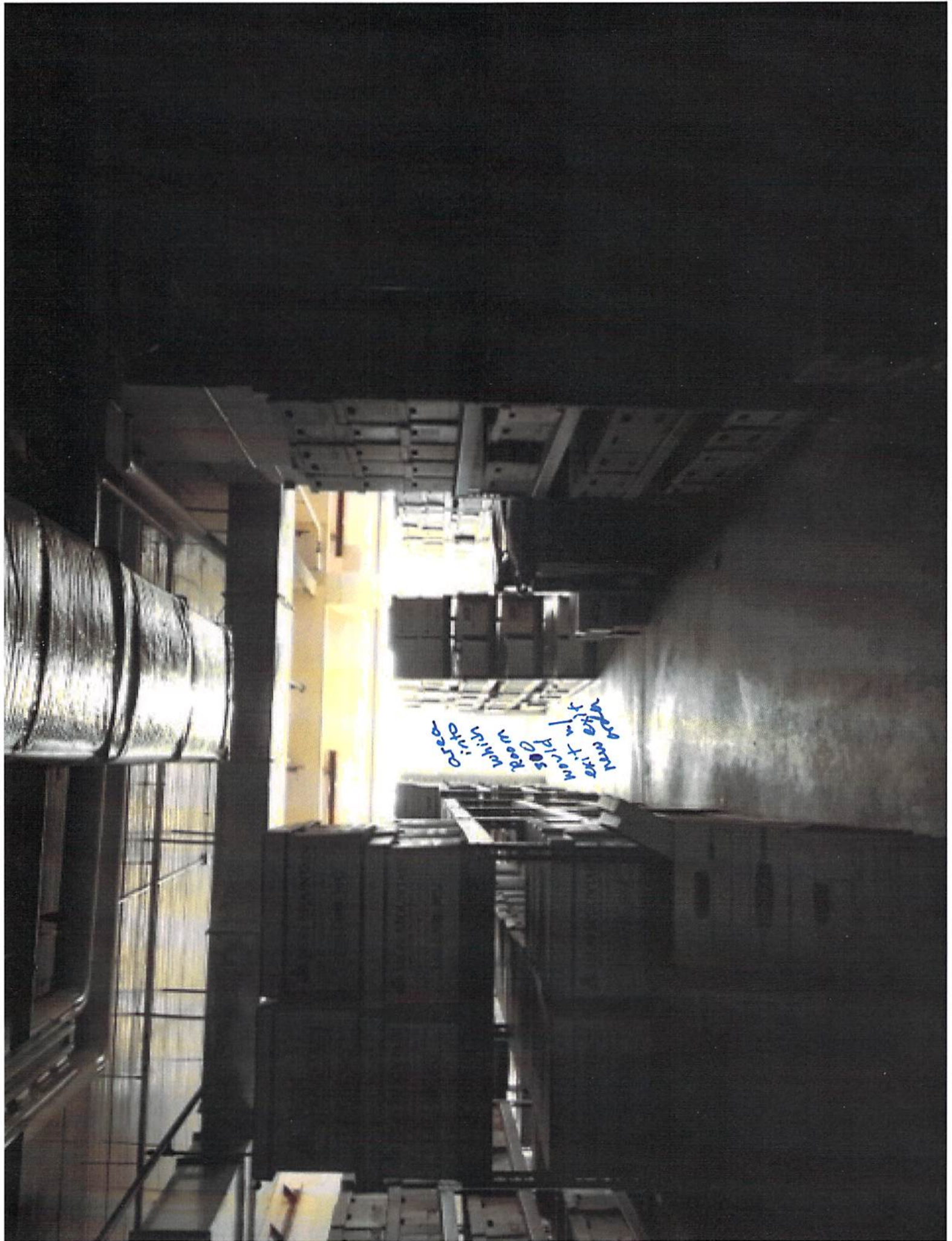
The use of alcoholic beverages is prohibited from the premises without the prior approval of the Executive Director. Proof of Liquor Liability Insurance will be required.

MCT prohibits the possession of firearms or weapons of any kind on the premises, except as provided by Massachusetts law.

Violation of these policies can result in termination of facility use privileges.

MCT retains the right to modify the facility use policy.





Area which would be used to exit from room



RM300

Exit Sign ordered

SP Act into
Rm. 330
which w/ existing
exits w/ signage

THE UNIVERSITY OF
MICHIGAN
1000 TAPSCOTT BLDG
ANN ARBOR MI 48106-1000
TEL: 734-763-1000
WWW.UMICH.EDU

EXIT

