

FURNITURE PLAN GENERAL NOTES

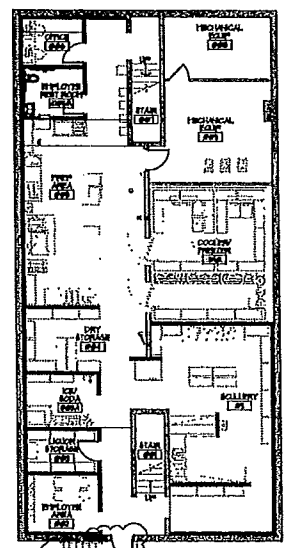
- ALL SEATING CAPACITY, COUNTERS AND BAR BY YELLOWWORK. FIELD VERIFY ALL DIMENSIONS CONDITION FROM TO FINISH/CATLIT. SEE FLOOR PLAN ELEVATION AND DETAILS FOR DIMENSION OF YELLOWWORK. SEE SPECIFICATIONS FOR SHOP DRAWINGS. RESISTAL. PROVIDE NOTES.
- SEE KITCHEN DRAWINGS FOR BAR AND KITCHEN EQUIPMENT INFORMATION.
- FURNITURE ITEMS TO BE PURCHASED BY OWNER, ASSEMBLED AND INSTALLED BY GENERAL CONTRACTOR.

TOTAL SEATING, INTERIOR & PATIO					
USE	AREA	SQ. FT/PERSON	OCC. LOAD	SEAT COUNT	
BAR (INTERIOR)	22 LP	2 LP	11	10	
DINING SEATING	850	10	75	75	
BAR (PATIO)	10 LP	2 LP	5	5	
PATIO SEATING	836	10	84	83	
KITCHEN	1100	2000	5	5	
TOTAL			163	143	
SIDEWALK SEATING (GRANDAVENUE)					24
TOTAL SEATING					TOTAL 167

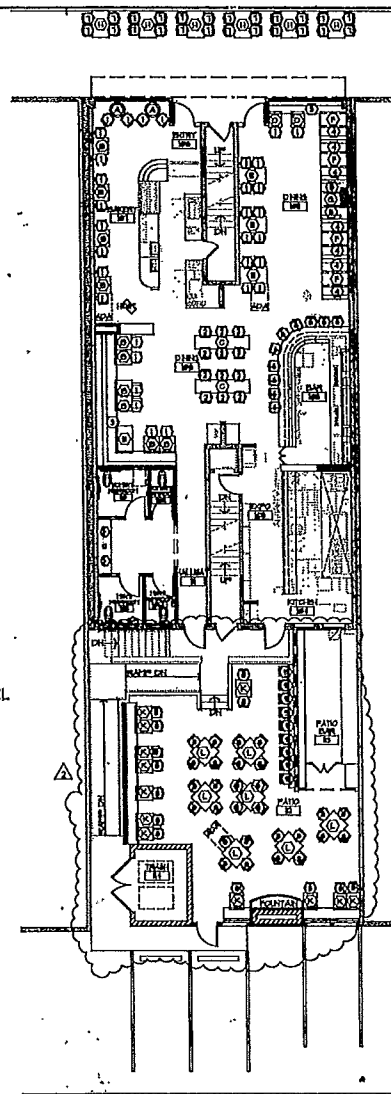
FURNITURE / FIXTURE INFORMATION

TABLES	PROVIDED BY:	FOOD/TYPE/STANDS	LOCATION	QUANTITY
1) 27" SEATING		FREESTANDING	BAKERY	2
2) 31" X 36" DINING		FREESTANDING	BAKERY/DINING	10
3) 36" X 74" HIGH TOP		FREESTANDING	DINING	2
4) 31" X 31" DINING		FREESTANDING	DINING	2
5) 36" X 48" DINING		FREESTANDING	DINING	4
6) 36" X 48" DINING		FREESTANDING	DINING	4
7) 36" X 48" DINING		FREESTANDING	DINING	1
8) 36" X 48" DINING		FREESTANDING	FRONT/BACK PATIO	6
9) 36" X 36" DINING		FREESTANDING	BACK PATIO	10
10) 24" X 36" DINING		FREESTANDING	BACK PATIO	10
11) 36" X 36" DINING		FREESTANDING	BACK PATIO	3

CHAIRS/BOOTH/BANKETTE	PROVIDED BY:	FOOD/TYPE/STANDS	LOCATION	QUANTITY
1) DINING HEIGHT CHAIR		FREESTANDING	BAKERY/DINING	32
2) BAR HEIGHT CHAIR		FREESTANDING	DINING	10
3) BANKETTE - SEE TO PROTOTYPE		FOOD	DINING	3
4) BOOTH - SEE TO PROTOTYPE		FOOD	DINING	2
5) BOOTH - SEE TO PROTOTYPE		FOOD	DINING	2
6) BAR STOOL		FREESTANDING	BAR	10
7) PATIO CHAIR		FREESTANDING	FRONT PATIO	24
8) PATIO CHAIR		FREESTANDING	BACK PATIO	41
9) PATIO BAR STOOL		FREESTANDING	BACK PATIO	6



FURNITURE & EQUIPMENT PLAN - LOWER LEVEL
1/2" = 1'-0"



FURNITURE & EQUIPMENT PLAN - FIRST FLOOR
1/2" = 1'-0"



10 South Eighth Street
Minneapolis MN 55402

1 612_330_2287
1 612_350_2930
shea.com

client
FRENCH MEADOW BARBY

project site
FRENCH MEADOW
1092 GRAND AVENUE
ST. PAUL, MN 55105

sheet

date

I HEREBY CERTIFY THAT THIS PLAN, SPECIFICATION OR REPORT WAS PREPARED BY ME OR UNDER MY DIRECT SUPERVISION AND THAT I AM A LICENSURED ARCHITECT UNDER THE LAWS OF THE STATE OF MINNESOTA.

DATE
3/29/18
BY
8/21/18
CITY OF GRAND AVENUE

PROJECT NO.
DATE
BY
PROJECT

PROJECT NO.
FURNITURE AND EQUIPMENT PLAN

A151