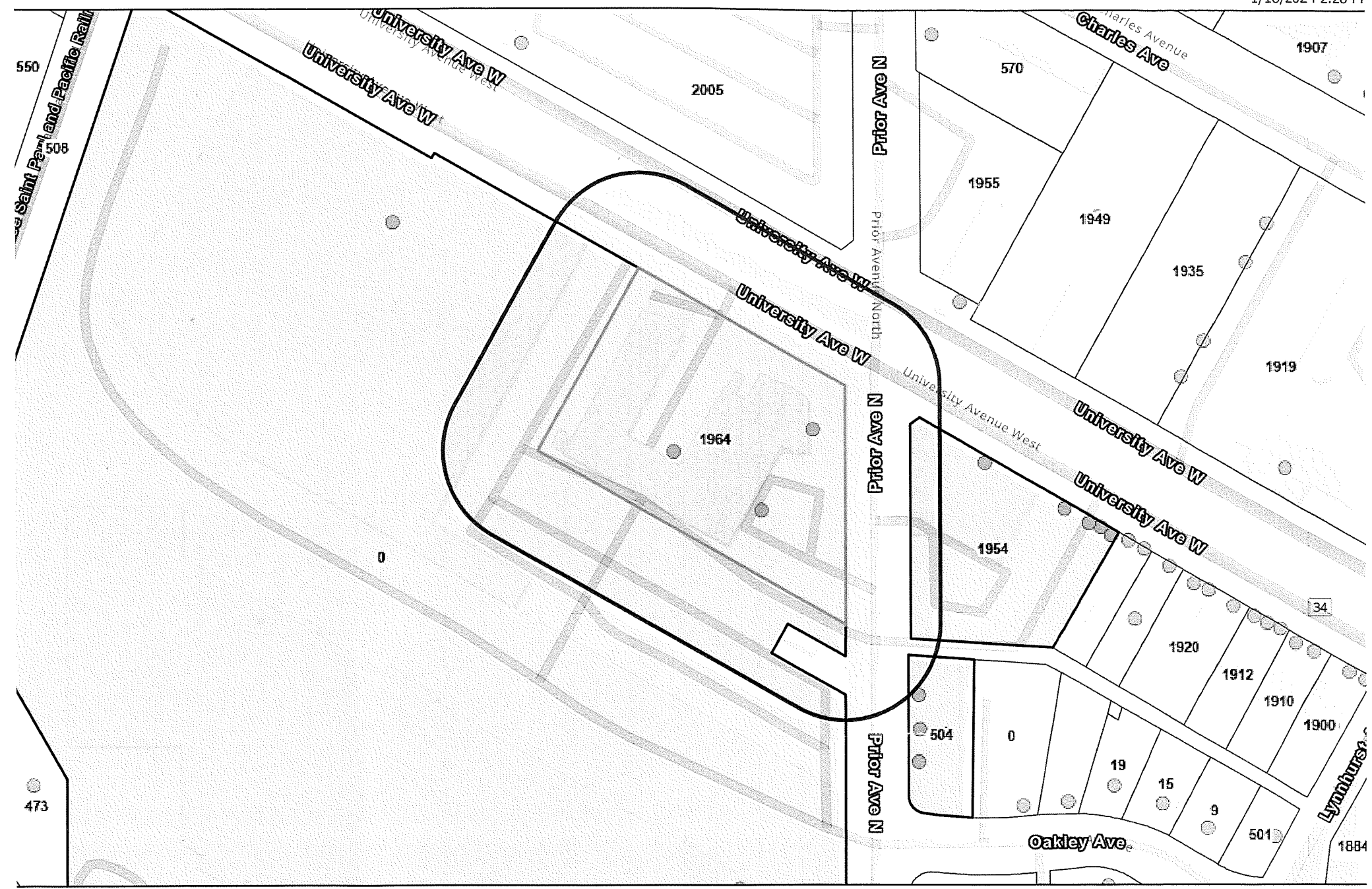
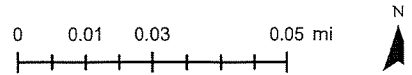


	A	B	C	D
1	PRIOR PROPERTIES LLC	1000 LYN WAY	HASTINGS MN 55033-2502	332923240038
2	HATKESH LLC	895 HIGHWAY 10 E	DETROIT LAKES MN 56501-4218	332923230016
3	G&I IX MIDWAY INDUSTRIAL LLC	5201 EDEN AVE STE 50	EDINA MN 55436-2367	332923230024
4	TWIN CITIES HABITAT FOR HUMANITY INC	1954 UNIVERSITY AVE W	SAINT PAUL MN 55104-3433	332923240090



Sources: Esri, Airbus DS, USGS, NGA, NASA, CGIAR, N Robinson, NCEAS, NLS, OS, NMA, Geodatastyrelsen, Rijkswaterstaat, GSA, Geoland, FEMA, Intermap and the GIS user community, City of Saint Paul - Public Works,



The Geographic Information System (GIS) Data to which this notice is attached are made available pursuant to the Minnesota Government Data Practices Act (Minnesota Statutes Chapter 13). The GIS Data are provided to you "AS IS" and without any warranty as to their performance, merchantability, or fitness for any particular purpose. The GIS Data were developed by the City of Saint Paul for its own internal business purposes. The City of Saint Paul does not represent or warrant that the GIS Data or the data documentation are error-free, complete, current, or accurate. You are responsible for any consequences resulting from your use of the GIS Data or your reliance on the GIS Data. You should consult the data documentation for this particular GIS Data to determine the limitations of the GIS Data and the precision with which the GIS Data may depict distance, direction, location, or other geographic features. If you transmit or provide the GIS Data (or any portion of it) to another