

2018 FORFEITURE LIST
CLASSIFICATION: NON-CONSERVATION LAND

Notice No.	PIN	Property Address	Property Type	Property Description	Lot Size	Legal Description
Commissioner District 3						
City of St. Paul						
18-035	20-29-22-32-0047	1325 Arkwright Street (Between 1317-1337 Arkwright Street)	Residential	Vacant land	76' x 150'	Abstract: The North 1/2 of the East 1/2 of Lot 33, J. W. Bass' Acre Lots
18-044	24-29-23-13-0055	1497 Matilda Street (North of 1489 Matilda Street)	Residential	Vacant land	92' x 121'	Torrrens: Lots 1 and 2, Block 12, Edwin M. Ware's Cumberland Addition
18-047	24-29-23-44-0053	1297 Woodbridge Street (Between 1293-1303 Woodbridge Street)	Residential	Vacant land	40' x 126'	Torrrens: Lot 6, Block 1, Norton's Addition
18-050	25-29-23-24-0034	1053 Western Avenue N (Between 1041-1057 Western Avenue N)	Commercial	Vacant land	13,908 sq. ft.	Abstract: Lots 7, 8 and 9, Block 4, Holcombe's Subdivision of Lots 70 to 75 inclusive, of Wilkin and Heyward's Outlots to St. Paul, Minn.
18-053	25-29-23-42-0240	Farrington Street (Between 938-944 Farrington Street)	Residential	Vacant land	13' x 98'	Abstract: The North 1/2 of Lot 7, Block 1, Matz Subdivision of Lot 11, Wilken and Heyward's Outlots to St. Paul
18-058	26-29-23-13-0020	1060 Avon Street N (North of 1056 Avon Street N)	Residential	Vacant land	68' x 77'	Torrrens: Lot 2, Block 4, Royal Oaks; The North one-half of Lot 3, Block 4, Royal Oaks
18-073	29-29-22-22-0152	422 Jessamine Avenue E	Residential	Single Family House - Vacant	86' x 132'	Abstract: The Westerly 2/3 of Lot 1, Block 18, Beaupre & Kelly's Addition to St. Paul, Ramsey Co., Minn.
18-076	29-29-22-32-0041	895 Desoto Street (North of 893 Desoto Street)	Residential	Vacant land	50' x 132'	Abstract: Lot 16, Block 5, Edmund Rice's First Addition to Saint Paul
18-081	30-29-22-43-0004	105 Granite Street (Between 101-107 Granite Street)	Residential	Vacant land	33' x 70'	Abstract: That part of Lot 13, Block 3, Edmund Rice's Second Addition to the City of St. Paul, described as follows: Commencing at the Northeast corner of said Lot 13; thence in a Westerly direction along the Northern boundary line of said Lot 13, a distance of 36 feet; thence Westerly along said Northern boundary line to a point 69.32 feet from the Northeast corner of said Lot 13; thence Southerly to a point in the Southerly boundary line of said Lot 13, 69.48 feet Westerly of the Southeast corner thereto; thence Easterly along said Southern boundary line to a point 36 feet Westerly from the Southeasterly boundary line thereof; thence Northerly to the place of beginning.

2018 FORFEITURE LIST
CLASSIFICATION: NON-CONSERVATION LAND

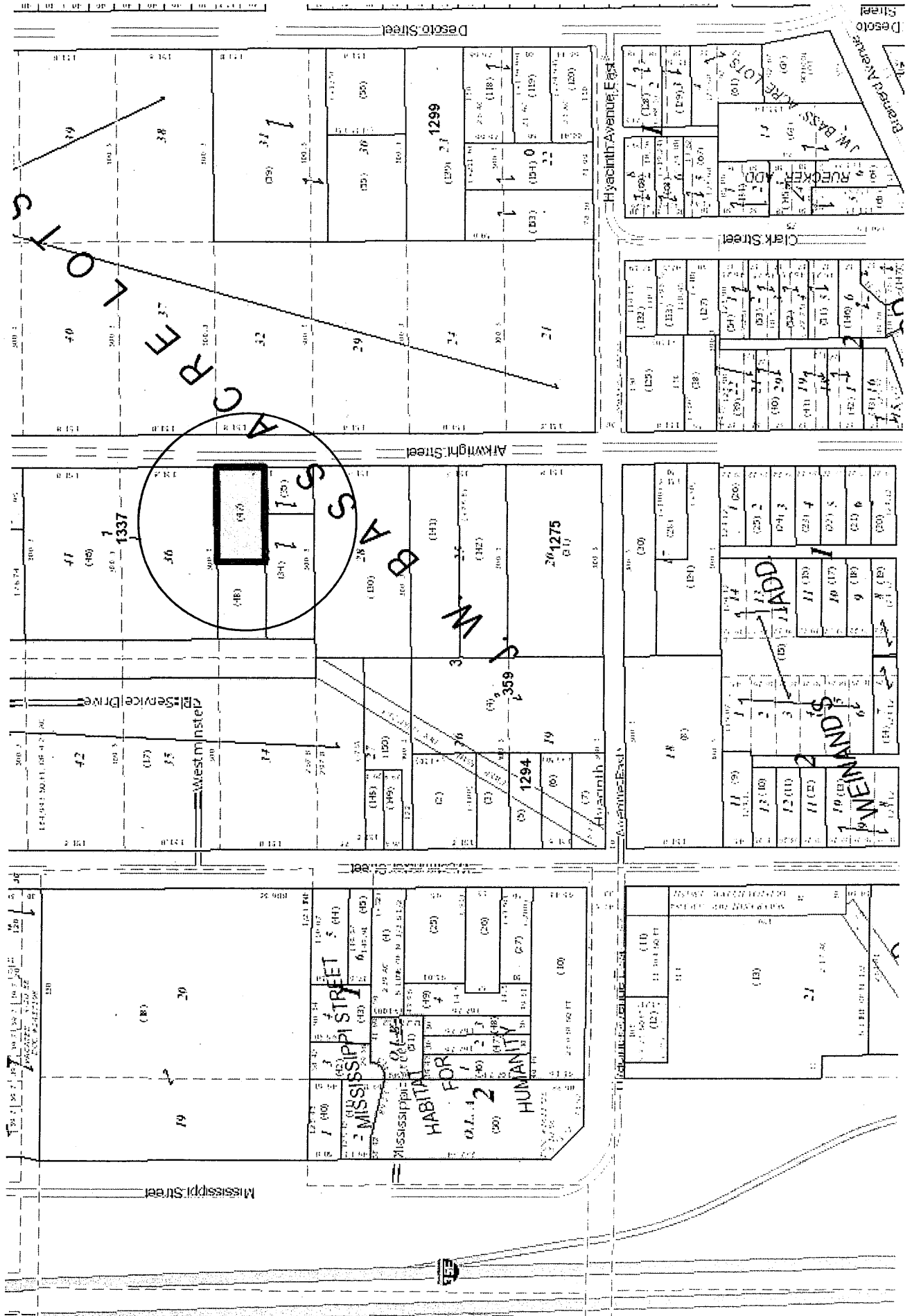
Commissioner District 4									
City of Saint Paul									
18-026	10-28-23-12-0001	1220 St. Clair Avenue	Residential	Duplex - Occupied	40' x 124'	Abstract: Lot 1, Block 2, Redwing Addition			
18-105	33-29-23-11-0198	1698 Lafond Avenue (West of 1694 Lafond Avenue)	Residential	Vacant land	43' x 125'	Torrens: Lot 6, Block 3, George Bros. Addition			
18-106	33-29-23-12-0132	1785 Van Buren Avenue	Residential	Single Family House - Vacant	40' x 117'	Abstract: Lot 7, Searl's Place No. 2			
18-118	35-29-23-31-0168	870 Fuller Avenue (Between 867-874 Fuller Avenue)	Residential	Vacant land	40' x 121'	Abstract: Lot 3, Block 3, Milton Addition			
Commissioner District 5									
City of Saint Paul									
18-030	11-28-23-24-0010	908 Jefferson Avenue	Residential	Single Family House - Occupied	0.27 acres	Abstract: Lots 3, 4 and 5, Block 11, Ridgewood Park Addition to the City of St. Paul, Ramsey Co., Minn.			
18-032	11-28-23-43-0119	661 Canton Street (Between 657-663 Canton Street)	Residential	Vacant land	5,760 sq. ft.	Abstract: The Southerly 30 feet of the Northerly 60 feet of Lots 1, 2 and 3, and the North one-half of Lot 4, Block 2, Asylum Addition No. 2 to the City of St. Paul, Minn., together with a driveway easement across the West 10 feet of the South one-half of Lot 4, Block 2 of said addition as contained in instrument filed as Document No. 1231951.			
18-091	32-29-22-21-0153	656 Desoto Street (South of 660 Desoto Street)	Residential	Vacant land	45' x 167'	Abstract: The South 45 feet of Lot 11, except the East 15 feet thereof of Irvine Addition of Out Lots to the Town of St. Paul, together with the right-of-way over the East 15 feet of the South 50 feet of said Lot 11, Irvine Addition of Out Lots to the Town of St. Paul			

2018 FORFEITURE LIST
CLASSIFICATION: NON-CONSERVATION LAND

18-092	32-29-22-24-0172	Brunson Street (SW of 480 Kenny Road)	Commercial	Vacant land	253 sq. ft.	Abstract: The vacated alley accruing and the following: that part lying Northeastly of the railroad right-of-way of the Saint Paul and Pacific Railway Company, its successors being the existing Great Northern Railway Company, Lot 10, Block 9, Brunson's Addition to the Town of St. Paul in the County of Ramsey & Terr. of Minn. NOTE: Subject to easement in Northern States Powers Company to construct and maintain electric transmission lines upon said premises as described in Book 1521 of Deeds, page 296 as Documents No. 1400896.
18-099	33-29-22-23-0103	932 3rd Street E (East of 926 3rd Street E)	Residential	Vacant land	60' x 42'	Abstract: The Westerly 60 feet of Lot 13, Adam Gotzian's Sub. of Blk. 84, Lyman Dayton's Addition to St. Paul.
Commissioner District 6						
City of Saint Paul						
18-034	20-29-22-12-0169	614 California Avenue E (Between 606-618 California Avenue E)	Residential	Vacant land	60' x 126'	Torrens: That part of Lot 27, Block 2, Ufton Grove Plat 1, lying East of the West half. Lot 28, Block 2, Ufton Grove Plat 1
18-039	21-29-22-32-0114	896 Cottage Avenue E (Between 890-898 Cottage Avenue E)	Residential	Vacant land	40' x 126'	Abstract: Lot 14, Block 5, Lane's Phalen Grove Add., St. Paul, Minn.
18-063	27-29-22-24-0004	Hazelwood Street (North of 1527 Ames Avenue)	Residential	Vacant land	0.16 acres	Abstract: Lot 4, Fisher Ames Subdivision of Lots 1 and 2, Block 1 of Ames Out Lots to the City of St. Paul
18-070	29-29-22-12-0201	609 Magnolia Avenue E (East of 605 Magnolia Avenue E)	Residential	Vacant land	37' x 121'	Torrens: Lot 16, Block 4, Joseph R. Weide's Addition
18-072	29-29-22-14-0134	720 Jenks Avenue (Between 710-724 Jenks Avenue)	Residential	Vacant land	40' x 125'	Abstract: Lot 5 Block 18, Arlington Hills Addition to St. Paul
18-107	34-29-22-23-0014	4th Street E (East of 1359 4th Street E)	Residential	Vacant land	48' x 127'	Torrens: Lot 14, Hamer's Subdivision
18-108	34-29-22-32-0007	417 Clarence Street (North of 415 Clarence Street)	Residential	Vacant land	54' x 108'	Abstract: The North 54 feet of Lots 1 and 2, Block 1, Joy's East End Add.



CD 3 20-29-22-32-0047 Between 1317-1337 Arkwright Street





CD 3 24-29-23-13-0055 North of 1489 Matilda Street



LAND

ADD.

PLAT

Arlington Avenue West

2

S



CD 3 24-29-23-44-0053 Between 1293-1303 Woodbridge Street

Address	Area	Value	Notes	Address	Area	Value	Notes
128.13	1	(76)		126.42	1	(28)	
124.13	1	(75)		126.42	1	(29)	
124.13	1	(74)		126.42	1	(30)	
124.13	1	(73)		126.42	1	(31)	
124.13	1	(72)		126.42	1	(32)	
124.13	1	(71)		126.42	1	(33)	
124.13	1	(70)		126.42	1	(34)	
124.13	1	(69)		126.42	1	(35)	
124.13	1	(68)		126.42	1	(36)	
124.13	1	(67)		126.42	1	(37)	
124.13	1	(66)		126.42	1	(38)	
124.13	1	(65)		126.42	1	(39)	
124.13	1	(64)		126.42	1	(40)	
124.13	1	(63)		126.42	1	(41)	
124.13	1	(62)		126.42	1	(42)	
124.13	1	(61)		126.42	1	(43)	
124.13	1	(60)		126.42	1	(44)	
124.13	1	(59)		126.42	1	(45)	
124.13	1	(58)		126.42	1	(46)	
124.13	1	(57)		126.42	1	(47)	
124.13	1	(56)		126.42	1	(48)	
124.13	1	(55)		126.42	1	(49)	
124.13	1	(54)		126.42	1	(50)	
124.13	1	(53)		126.42	1	(51)	
124.13	1	(52)		126.42	1	(52)	
124.13	1	(51)		126.42	1	(53)	
124.13	1	(50)		126.42	1	(54)	
124.13	1	(49)		126.42	1	(55)	
124.13	1	(48)		126.42	1	(56)	
124.13	1	(47)		126.42	1	(57)	
124.13	1	(46)		126.42	1	(58)	
124.13	1	(45)		126.42	1	(59)	
124.13	1	(44)		126.42	1	(60)	
124.13	1	(43)		126.42	1	(61)	
124.13	1	(42)		126.42	1	(62)	
124.13	1	(41)		126.42	1	(63)	
124.13	1	(40)		126.42	1	(64)	
124.13	1	(39)		126.42	1	(65)	
124.13	1	(38)		126.42	1	(66)	
124.13	1	(37)		126.42	1	(67)	
124.13	1	(36)		126.42	1	(68)	
124.13	1	(35)		126.42	1	(69)	
124.13	1	(34)		126.42	1	(70)	
124.13	1	(33)		126.42	1	(71)	
124.13	1	(32)		126.42	1	(72)	
124.13	1	(31)		126.42	1	(73)	
124.13	1	(30)		126.42	1	(74)	
124.13	1	(29)		126.42	1	(75)	
124.13	1	(28)		126.42	1	(76)	
124.13	1	(27)		126.42	1	(77)	
124.13	1	(26)		126.42	1	(78)	
124.13	1	(25)		126.42	1	(79)	
124.13	1	(24)		126.42	1	(80)	
124.13	1	(23)		126.42	1	(81)	
124.13	1	(22)		126.42	1	(82)	
124.13	1	(21)		126.42	1	(83)	
124.13	1	(20)		126.42	1	(84)	
124.13	1	(19)		126.42	1	(85)	
124.13	1	(18)		126.42	1	(86)	
124.13	1	(17)		126.42	1	(87)	
124.13	1	(16)		126.42	1	(88)	
124.13	1	(15)		126.42	1	(89)	
124.13	1	(14)		126.42	1	(90)	
124.13	1	(13)		126.42	1	(91)	
124.13	1	(12)		126.42	1	(92)	
124.13	1	(11)		126.42	1	(93)	
124.13	1	(10)		126.42	1	(94)	
124.13	1	(9)		126.42	1	(95)	
124.13	1	(8)		126.42	1	(96)	
124.13	1	(7)		126.42	1	(97)	
124.13	1	(6)		126.42	1	(98)	
124.13	1	(5)		126.42	1	(99)	
124.13	1	(4)		126.42	1	(100)	
124.13	1	(3)		126.42	1	(101)	
124.13	1	(2)		126.42	1	(102)	
124.13	1	(1)		126.42	1	(103)	

Orange Avenue West

Woodbridge Street

Orange Avenue West

BANKER'S

HOLZ'S

NORRIS



CD 3 25-29-23-24-0034 Between 1041-1057 Western Avenue N

12)	19	20	30	30	39
	(11)	(9)	(40)	111.66	39

39	17	19	20	30	30	39
	(4)	(211)	111.66	1	1	39

43	10	124	124	132	42.88
	(28)	9	(27)	132	42.66

66	30	30	111.66	10	38
	(49)	12	11	(30)	38
	(51)	8	(51)	38	38
141.66	141.66	141.66	141.66	(52)	38
	(53)	6	(53)	38	38
	(54)	3	(54)	38	38
66	141.66	141.66	141.66	(55)	38
	(56)	7	(56)	38	38
(99)	23	24	30	30	38
	(58)	2	1023	38	38
	(57)	111.66	38	38	38

38	13	30	30	111.66	10	38
	(48)	14	12	11	(33)	38
	(208)	8	(34)	38	38	38
38	16	141.66	141.66	7	8	38
	(45)	1040	(35)	38	38	38
	(44)	4	(36)	38	38	38
38	(43)	141.66	141.66	(37)	38	38
	(42)	23	24	1/2	3	38
	(41)	1/2	2	1	(38)	38
38	22	39	1019	38	38	38
	111.66	111.66	30	30	38	38

43	132	18	193	132	1	83	42.85
	17	(192)	2	(84)	42	42	42
	16	(191)	3	(85)	42	42	42
	15	(20)	4	(86)	42	42	42
	14	190	34	5	(87)	42	42
	13	94	6	(88)	42	42	42
	12	93	7	(89)	42	42	42
	11	92	8	(90)	42	42	42
43	132	10	91	132	1019	9	42.85

25	25	25	25	25	25	25	25	25	25	25	25	25	25	25	132.5	
22	21	20	19	18	17	16	15	14	13	12	11	10	9	8	7	6
(109)	(108)	(107)	(106)	(105)	(104)	(103)	(102)	(101)	(100)	(99)	(98)	(97)	(96)	(95)	(94)	(93)
WEIDE'S RE. OF																

42.5	132	14	136	132	1	123	43.96
40	13	(135)	2	(124)	40.91	40.91	40.91
40	12	(134)	3	(125)	40.91	40.91	40.91

Cumberland Street

Cook Avenue West

Western Avenue North

Lawson Avenue West

Virginia Street

FOR COMBATS



CD 3 25-29-23-42-0240 Between 938-944 Farrington Street

Front Avenue

3	2	(36)	→
3	1	3	2
3	3	(37)	1

ADD. ADD.

5	7	(58)	→
6	8	4	(59)
6	5	(60)	6

COURTLAND

3	2	334	1
37	(96)	(95)	(94)
2	2	2	2

6	7	8	4
(115)	(116)	(117)	(118)
5	6		

1	(224)
2	
3	
4	(16)
5	(17)

6	(239)
7	(240)
8	(234)
9	(21)
10	(22)

11	(23)
12	(24)
13	(25)
14	(26)
15	(27)
16	(28)
17	(29)
18	(30)
19	(31)
20	(32)

(1)	959
2	
3	
4	
5	
6	
7	
8	
9	
10	
11	
12	
13	
14	
15	
16	
17	
18	
19	
20	

21	(238)
22	
23	(33)
24	(32)

Farrington Street

3. Jinson Street

15

1	(74)
2	
3	
4	(75)
5	(76)
6	(77)
7	
8	
9	
10	(73)
11	
12	
13	
14	
15	
16	
17	
18	
19	
20	

MATIN

21	(61)
22	
23	
24	
25	
26	
27	
28	
29	
30	
31	
32	
33	
34	
35	
36	
37	
38	
39	
40	

41	(62)
42	
43	
44	
45	
46	
47	
48	
49	
50	
51	
52	
53	
54	
55	
56	
57	
58	
59	
60	

61	(63)
62	
63	
64	
65	
66	
67	
68	
69	
70	
71	
72	
73	
74	
75	
76	
77	
78	
79	
80	
81	
82	
83	
84	
85	
86	
87	
88	
89	
90	
91	
92	
93	

94	
95	
96	
97	
98	
99	
100	

101	
102	
103	
104	
105	
106	
107	
108	
109	
110	
111	
112	
113	
114	
115	
116	
117	
118	
119	
120	

3. Jinson Street

15

1	30
2	(85)
3	
4	
5	
6	
7	
8	
9	
10	
11	
12	
13	
14	
15	
16	
17	
18	
19	
20	

21	(235)
22	(234)
23	(84)
24	(246)
25	(20)
26	
27	
28	
29	
30	
31	
32	
33	
34	
35	
36	
37	
38	
39	
40	

Gallery Street

Wayzata Street

41	(131)
42	(130)
43	(129)
44	(128)
45	
46	
47	
48	
49	
50	
51	
52	
53	
54	
55	
56	
57	
58	
59	
60	

5(127)

6

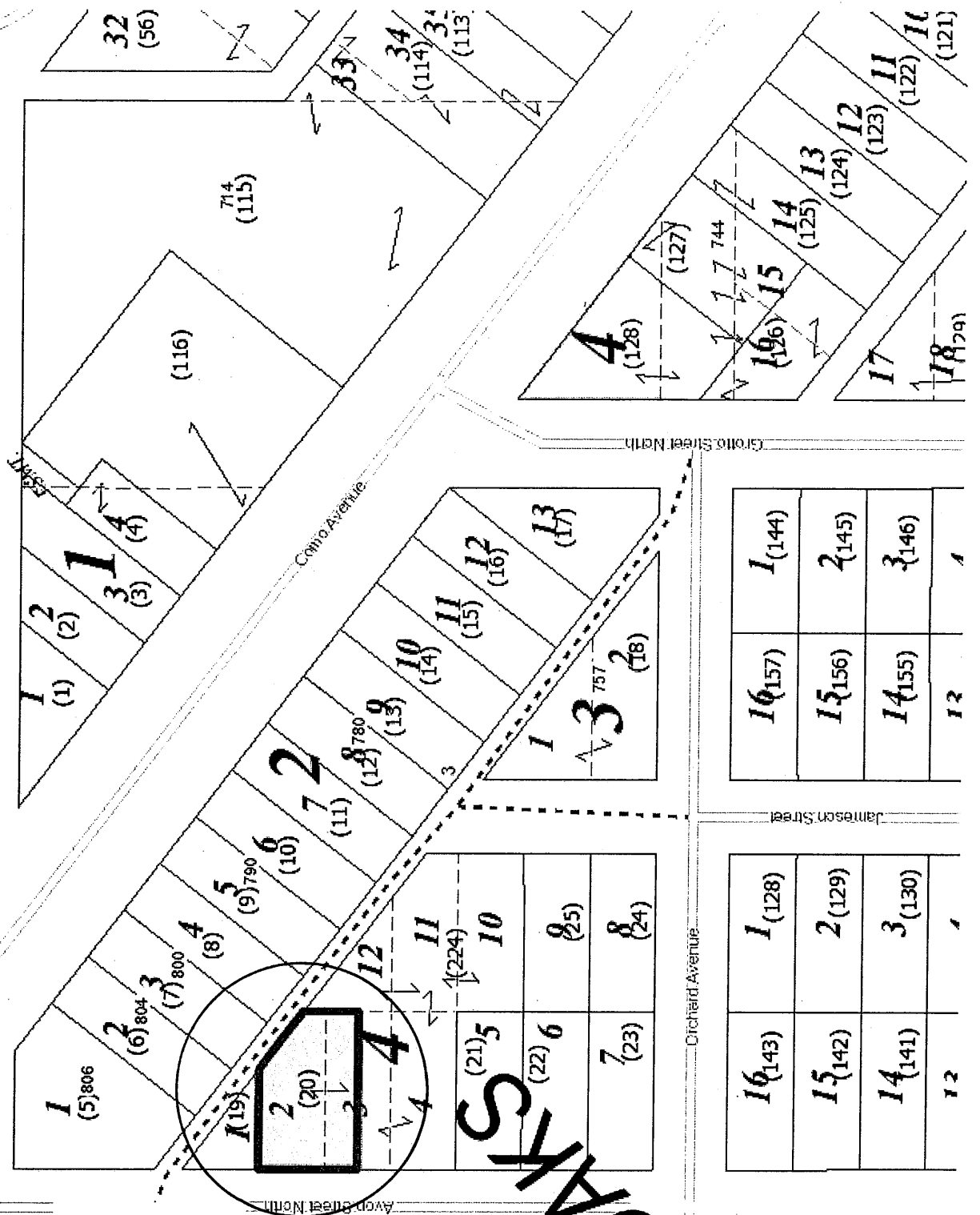


CD 3 26-29-23-13-0020 North of 1056 Avon Street N

Jessamine Avenue West

Jessamine Avenue West

20(46)	1(28)
19	2(29)
18(45)	3(30)
17(44)	4(31)
16(43)	5(32)
15(42)	6(33)
14(41)	7(34)
13(40)	8(35)
12(39)	9(36)
11(38)	10(37)



16(127)	1(112)
15(126)	2(113)
14(125)	3(114)
13	

16(143)	1(128)
15(142)	2(129)
14(141)	3(130)
13	

16(157)	1(144)
15(156)	2(145)
14(155)	3(146)
13	

Orchard Avenue

Crows Street North

Jessamine Street

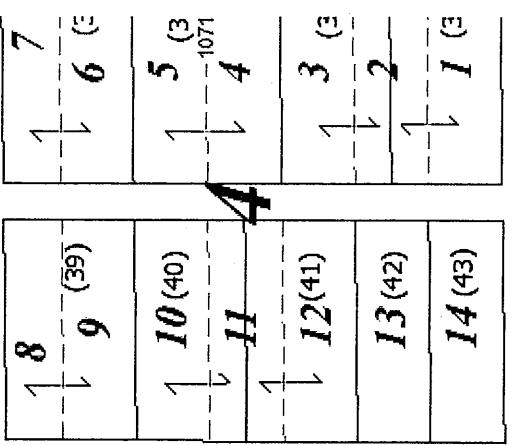
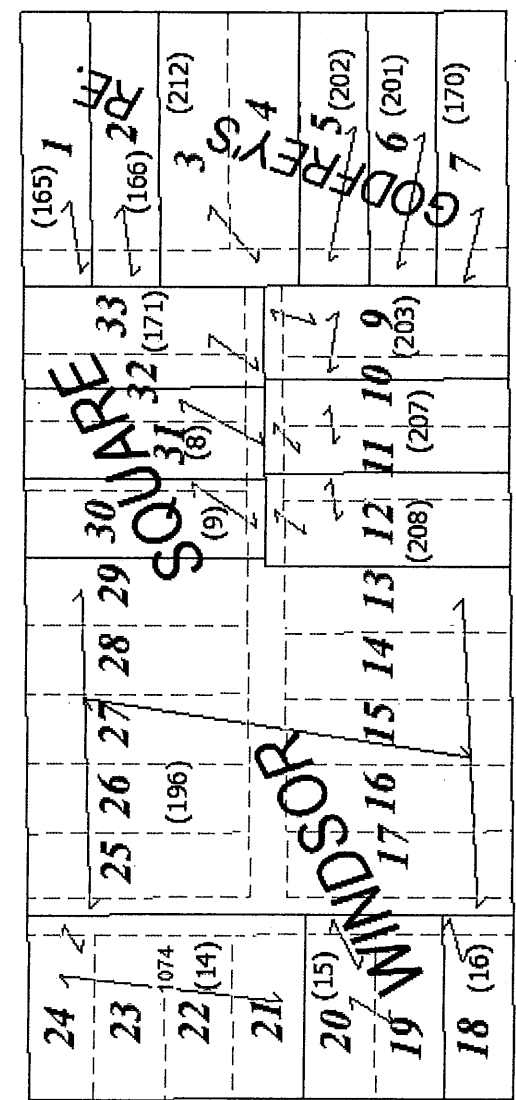
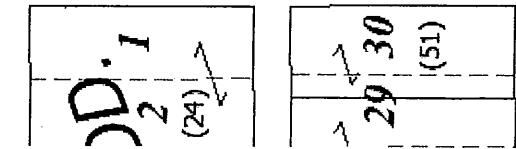
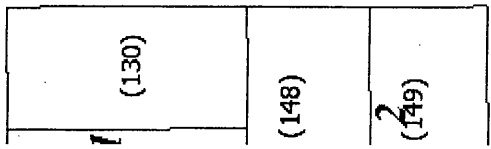
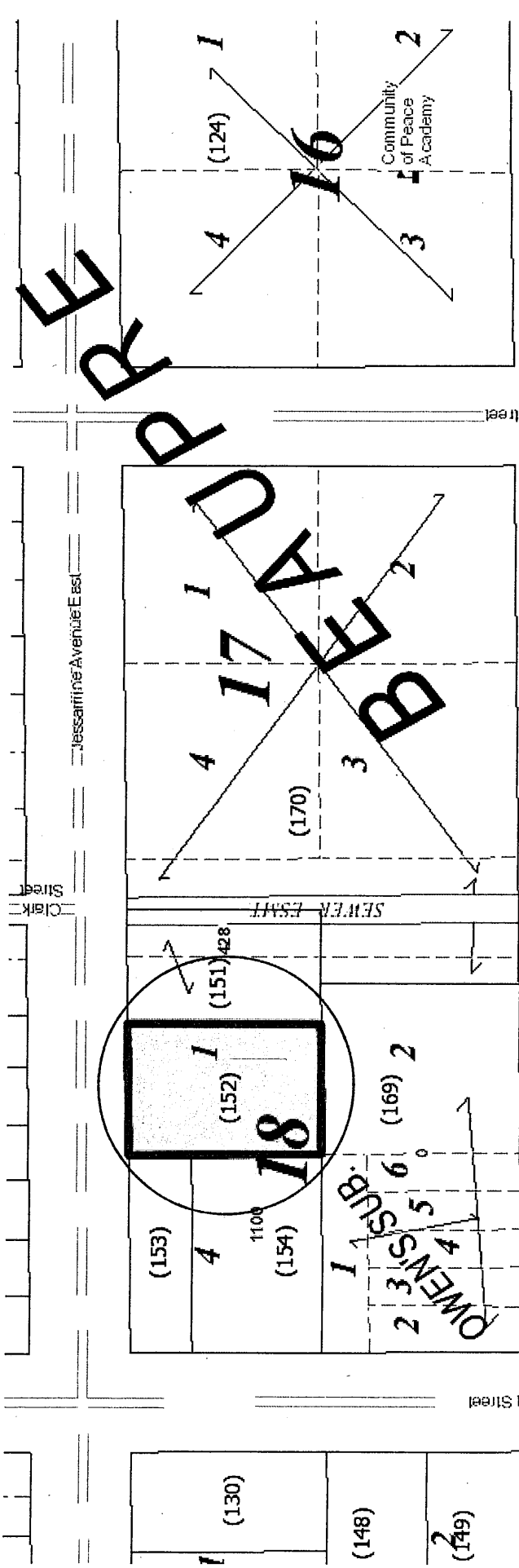
Crows Avenue

Avon Street North

OFFS



CD 3 29-29-22-22-0152 422 Jessamine Avenue E



Cook Avenue East



CD 3 29-29-22-32-0041 North of 893 Desoto Street

(77) 6 ⁹⁰⁰	(51) 8 ⁹⁹
(78) 7	12 (50)

York Avenue

1 (90) 8 ⁹⁰	11 (89) 8 ⁸⁹
2 (91) 3	10 (204) 9 ⁸⁸³
4 (92) 8 ⁷⁶	8 (86) 8 ⁸⁷⁷
5 (93) 6	7 (85) 7 ⁶
7 (94) 8	6 (84) 6 ⁸⁶⁹
8 (95) 9	5 (83) 5 ⁸⁶³
10	4
11 (96) 12	3 2 (195) 1 ⁴²⁷ (79)

Clark Street

(40) 15	(41) 16 ⁸⁹⁵
(39) 14	(42) 17
(38) 13	(43) 18
(37) 12	(44) 19
(36) 11	(45) 20 ⁸⁷⁷
(35) 8 ⁷⁸	
(34) 10	(46) 21
(33) 9	(47) 22 ⁸⁶⁹
	(196) 8 ⁶⁷ ESMT
(32) 8	(197) 23
(31) 7 ⁸⁶⁰	(49) 24
6 ⁴³¹ 5	4 3
(30) 29	(28) 2 ⁴⁴⁹ 1 ⁴⁶³ (203) (202)

Desoto Street

(85) 15	(86) 16 (87)
(84) 14	1 (233) 17
(83) 13	18 (90)
(82) 12	(91) 19 ⁸⁸¹
(81) 11	(92) 20 ⁸⁷⁵
(80) 10	(93) 21 ⁸⁷¹
(79) 9	(94) 22
(78) 8	(161) 23
(77) 7	(99) 24
6 5	4 ⁴⁶⁹ 3 ⁴⁷⁵ 2 1
(76) 845	(75) 841

YORK AVENUE
BURR STREET

DESOTO STREET

CLARK STREET

YORK AVENUE



CD 3 30-29-22-43-0004 Between 101-107 Granite Street





CD 4 10-28-23-12-0001 1220 St. Clair Avenue

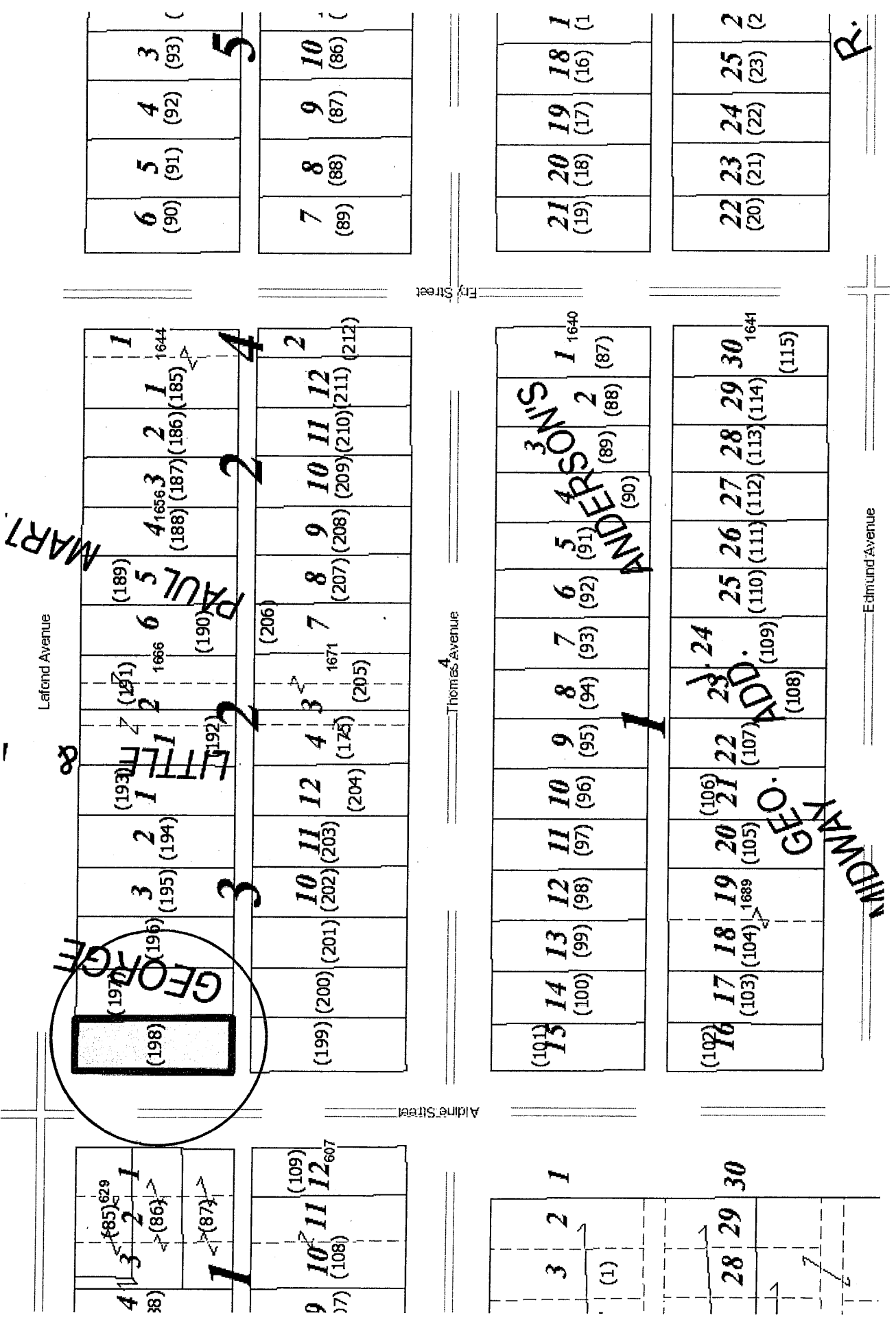


ST. CLAIR HEIGHTS
 1 (21)
 2 (22)
 3 (23)
 4 (24)
 5 (25)
 6 (26)
 7 (27)
 8 (28)

ENDSWILL
 1 (45)
 2 (44)
 3 (43)
 4 (42)
 5 (41)
 6 (40)
 7 (39)
 8 (38)
 9 (37)
 10 (36)
 11 (35)
 12 (34)
 13 (33)
 14 (32)
 15 (31)
 16 (30)
 17 (29)
 18 (28)
 19 (27)
 20 (26)
 21 (25)
 22 (24)
 23 (23)
 24 (22)



CD 4 33-29-23-11-0198 West of 1694 Lafond Avenue



4	1	(85)	1
3	2	(86)	
2	3	(87)	

9	10	11	12
(108)	(109)	(108)	(107)

3	2	1
(1)		

28	29	30

(198)	(197)	(196)	(195)	(194)	(193)	(192)	(191)	(190)	(189)	(188)	(187)	(186)	(185)	(184)
1	2	3	4	5	6	7	8	9	10	11	12	13	14	15

(101)	(100)	(99)	(98)	(97)	(96)	(95)	(94)	(93)	(92)	(91)	(90)	(89)	(88)	(87)
13	14	15	16	17	18	19	20	21	22	23	24	25	26	27

(102)	(101)	(100)	(99)	(98)	(97)	(96)	(95)	(94)	(93)	(92)	(91)	(90)	(89)	(88)	(87)
16	17	18	19	20	21	22	23	24	25	26	27	28	29	30	

6	5	4	3
(90)	(91)	(92)	(93)

7	8	9	10
(89)	(88)	(87)	(86)

21	20	19	18	1
(19)	(18)	(17)	(16)	(1)

22	23	24	25	2
(20)	(21)	(22)	(23)	(2)

Edmund Avenue



CD 4 33-29-23-12-0132 1785 Van Buren Avenue

Minnehaha Avenue West

15 (124)	14 (123)	13 (122)	12 (121)	11 (120)	10 (119)	9 (118)	8 (117)	7 (116)	6 (115)	5 (114)	4 (113)	3 (112)	2 (111)	1 (110)
SEARL'S PLACE														
15 (125)	14 (126)	13 (127)	12 (128)	11 (129)	10 (130)	9 (131)	8 (132)	7 (133)	6 (134)	5 (135)	4 (136)	3 (137)	2 (138)	1 (139)
SEARL'S PLACE														

Fairview Avenue North

Van Buren Avenue

9 (153)	10 (154)	11 (155)	12 (156)	13 (157)	14 (158)	15 (159)	16 (160)	17 (161)	18 (162)	19 (163)	20 (164)	21 (165)	22 (166)	
3														
6 (150)	7 (151)	8 (152)	9 (153)	10 (154)	11 (155)	12 (156)	13 (157)	14 (158)	15 (159)	16 (160)	17 (161)	18 (162)	19 (163)	20 (164)
2														
1 (145)	2 (146)	3 (147)	4 (148)	5 (149)	6 (150)	7 (151)	8 (152)	9 (153)	10 (154)	11 (155)	12 (156)	13 (157)	14 (158)	15 (159)
1														
1 (141)	2 (142)	3 (143)	4 (144)	5 (145)	6 (146)	7 (147)	8 (148)	9 (149)	10 (150)	11 (151)	12 (152)	13 (153)	14 (154)	15 (155)
1														

Wheeler Street North

Blair Avenue

9 (225)	10 (226)	11 (227)	12 (228)	13 (229)	14 (230)	15 (231)	16 (232)
GILLETTE'S							
1 (175)	2 (176)	3 (177)	4 (178)	5 (179)	6 (180)	7 (181)	8 (182)
GILLETTE'S							

1 (34)	2 (35)	3 (36)	4 (37)	5 (38)	6 (39)	7 (40)	8 (41)	9 (42)	10 (43)	11 (44)
ADD.										
1 (34)	2 (35)	3 (36)	4 (37)	5 (38)	6 (39)	7 (40)	8 (41)	9 (42)	10 (43)	11 (44)

Fuller Avenue

A

3 ⁹³⁰ (52)	2 ⁹²⁶ (51)	1 ⁹²² (50)
--------------------------	--------------------------	--------------------------

28 ⁷⁶ (76)	29 ⁷⁷ (77)	30 ⁷⁸ (78)
--------------------------	--------------------------	--------------------------

13 ⁽¹⁷⁹⁾	14 ⁽¹⁷⁸⁾	13 ⁽¹⁷⁷⁾	12 ⁽¹⁷⁶⁾	11 ⁽¹⁷⁵⁾	10 ⁽¹⁷⁴⁾	9 ⁽¹⁷³⁾	8 ⁽¹⁷²⁾	7 ⁽¹⁷¹⁾	6 ⁽¹⁷⁰⁾	5 ⁽¹⁶⁹⁾	4 ⁽¹⁶⁸⁾	3 ⁽¹⁶⁷⁾	2 ⁽¹⁶⁶⁾	1 ⁸⁶⁰ (166)
---------------------	---------------------	---------------------	---------------------	---------------------	---------------------	--------------------	--------------------	--------------------	--------------------	--------------------	--------------------	--------------------	--------------------	---------------------------

3

16 ⁽¹⁸⁰⁾	17 ⁽¹⁸¹⁾	18 ⁽¹⁸²⁾	19 ⁽¹⁸³⁾	20 ⁽¹⁸⁴⁾	21 ⁽¹⁸⁵⁾	22 ⁽¹⁸⁶⁾	23 ⁽¹⁸⁷⁾	24 ⁽¹⁸⁸⁾	25 ⁽¹⁸⁹⁾	26 ⁽¹⁹⁰⁾	27 ⁽¹⁹¹⁾	28 ⁽¹⁹²⁾	29 ⁽¹⁹³⁾	30 ⁸⁶³ (193)
---------------------	---------------------	---------------------	---------------------	---------------------	---------------------	---------------------	---------------------	---------------------	---------------------	---------------------	---------------------	---------------------	---------------------	----------------------------

Millon Street North

Central Avenue West
4

ADD:

3 ⁽⁸¹⁾	2 ⁹²⁶ (80)	1 ³⁸⁵ (79)
-------------------	--------------------------	--------------------------

28 ⁽¹⁰⁶⁾	29 ⁽¹⁰⁷⁾	30 ⁹²³ (108)
---------------------	---------------------	----------------------------

15 ⁽²⁰⁷⁾	14 ⁽²⁰⁶⁾	13 ⁽²⁰⁵⁾	12 ⁽²⁰⁴⁾	11 ⁽²⁰³⁾	10 ⁽²⁰²⁾	9 ⁽²⁰¹⁾	8 ⁽²⁰⁰⁾	7 ⁽¹⁹⁹⁾	6 ⁽¹⁹⁸⁾	5 ⁽¹⁹⁷⁾	4 ⁽¹⁹⁶⁾	3 ⁽¹⁹⁵⁾	2 ⁽¹⁹⁴⁾	1 ⁸⁶² (194)
---------------------	---------------------	---------------------	---------------------	---------------------	---------------------	--------------------	--------------------	--------------------	--------------------	--------------------	--------------------	--------------------	--------------------	---------------------------

16 ⁽²⁰⁸⁾	17 ⁽²⁰⁹⁾	18 ⁽²¹⁰⁾	19 ⁽²¹¹⁾	20 ⁽²¹²⁾	21 ⁽²¹³⁾	22 ⁽²¹⁴⁾	23 ⁽²¹⁵⁾	24 ⁽²¹⁶⁾	25 ⁽²¹⁷⁾	26 ⁽²¹⁸⁾	27 ⁽²¹⁹⁾	28 ⁽²²⁰⁾	29 ⁽²²¹⁾	30 ⁸⁶¹ (220)
---------------------	---------------------	---------------------	---------------------	---------------------	---------------------	---------------------	---------------------	---------------------	---------------------	---------------------	---------------------	---------------------	---------------------	----------------------------

Victoria Street North

9 ⁽¹²⁴⁾	8 ⁸⁵² (123)	7 ⁸⁴⁸ (122)	6 ⁸⁴⁴ (121)	5 ⁽¹²¹⁾
--------------------	---------------------------	---------------------------	---------------------------	--------------------

10 ⁽¹²⁵⁾	11 ⁽¹²⁶⁾	12 ⁽¹²⁷⁾	13 ⁽¹²⁸⁾	1 ⁽¹²⁸⁾
---------------------	---------------------	---------------------	---------------------	--------------------

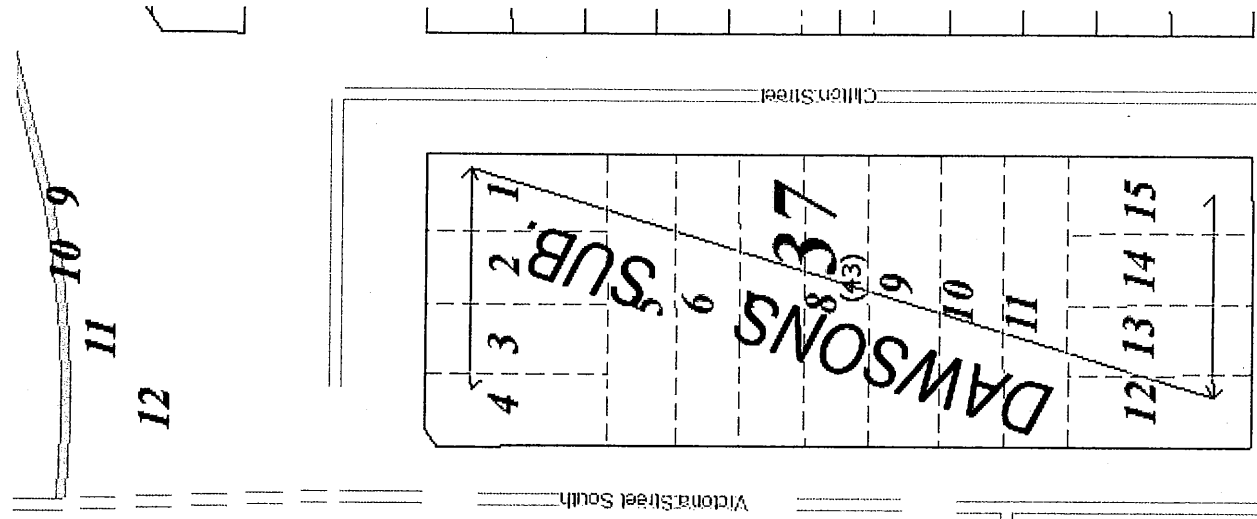
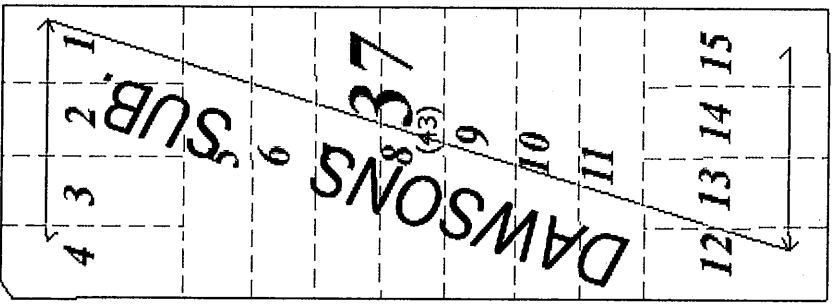
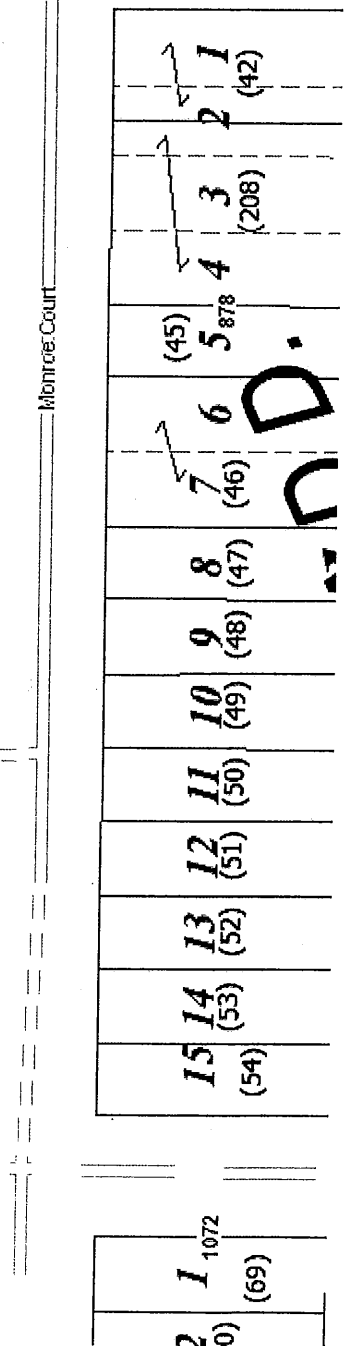
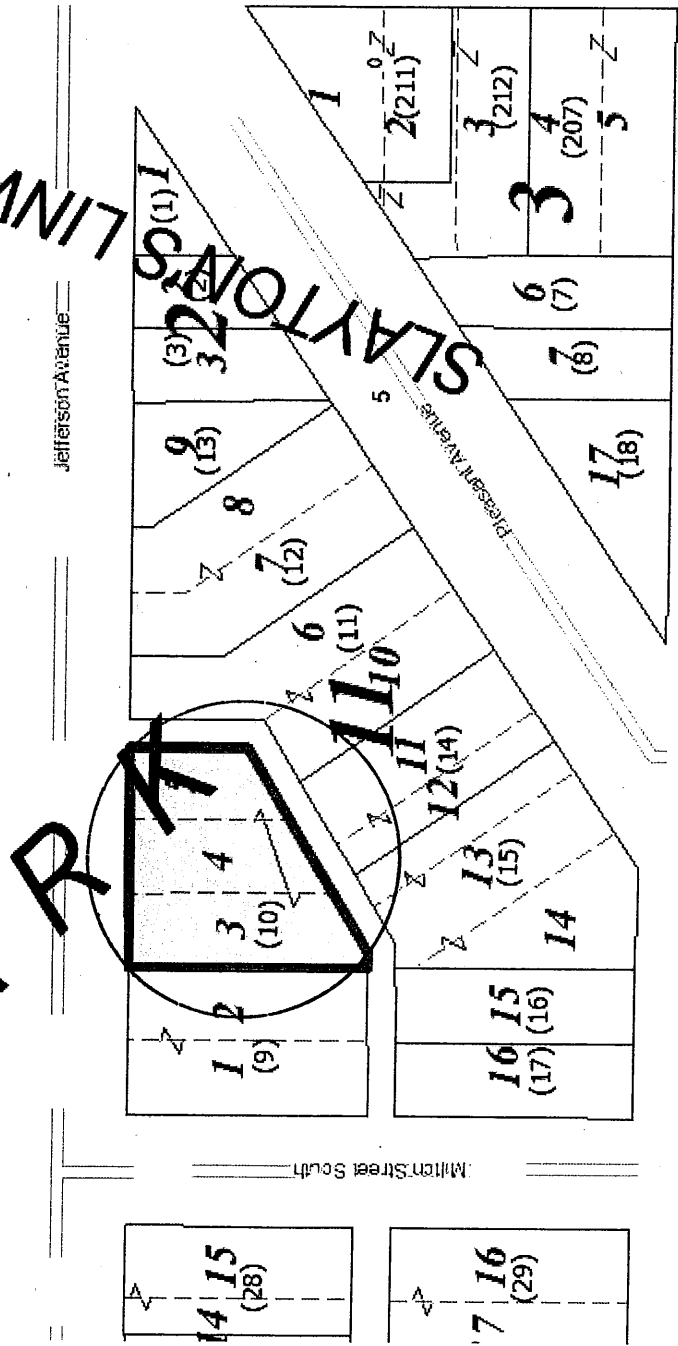
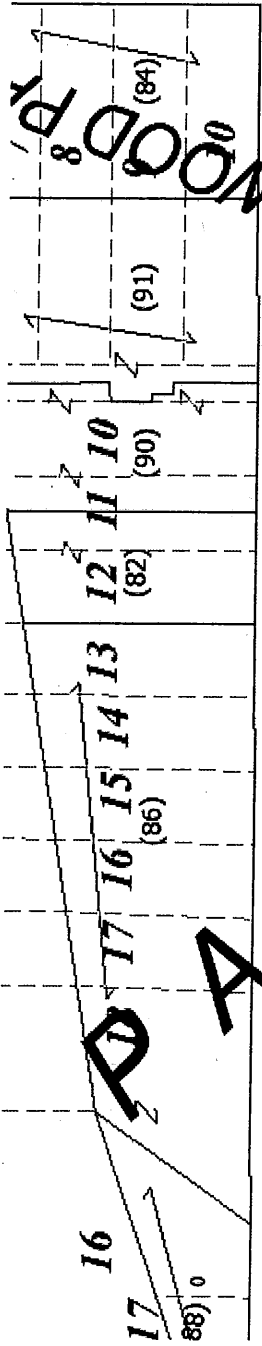
9 ⁽¹²⁵⁾	8 ⁽¹²⁶⁾	7 ⁽¹²⁷⁾	6 ⁽¹²⁸⁾	5 ⁽¹²⁸⁾
--------------------	--------------------	--------------------	--------------------	--------------------

10 ⁽¹²⁵⁾	11 ⁽¹²⁶⁾	12 ⁽¹²⁷⁾	13 ⁽¹²⁸⁾	1 ⁽¹²⁸⁾
---------------------	---------------------	---------------------	---------------------	--------------------

Saint Anthony Avenue

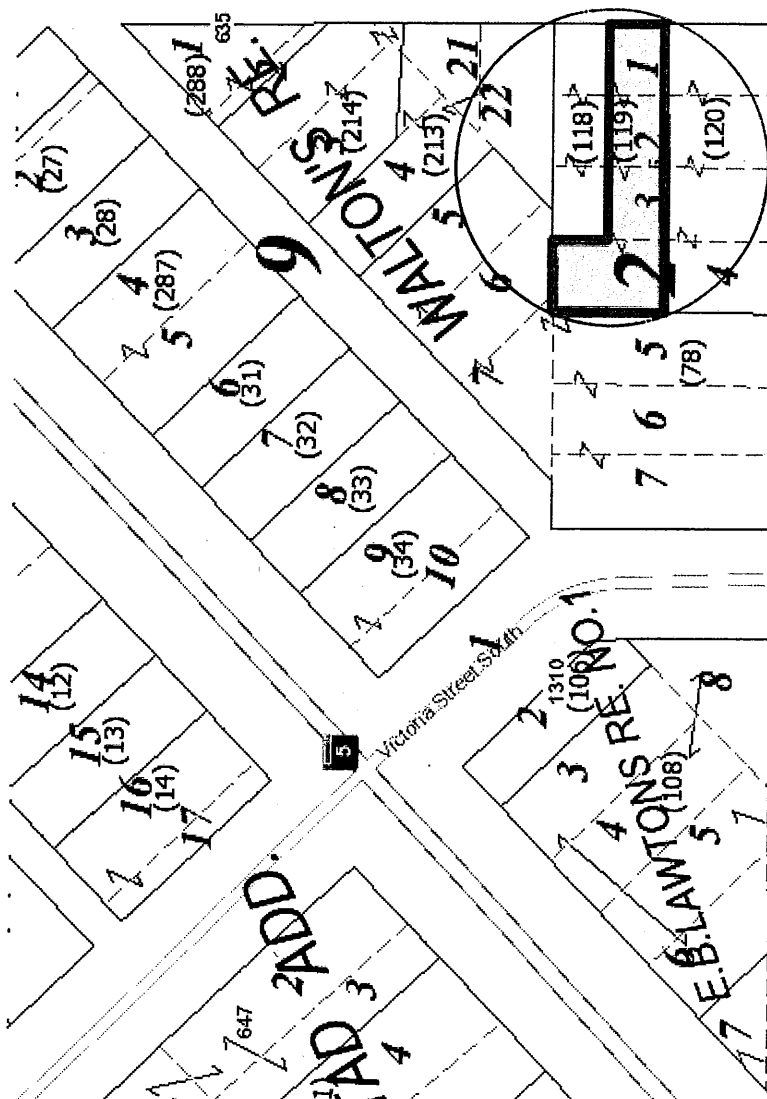


CD 5 11-28-23-24-0010 908 Jefferson Avenue





CD 5 11-28-23-43-0119 Between 657-663 Canton Street



16 (94)	14 (92)	12 (90)	11 (89)	10 (88)	9 (87)	8 (86)
---------	---------	---------	---------	---------	--------	--------

Forster Street

RE. OF BLK. 1

17 (97)	18 (96)	19 (95)	20 (98)	21 (98)	22 (99)	23 (99)	24 (100)	25 (101)	2 (11)
---------	---------	---------	---------	---------	---------	---------	----------	----------	--------

Scheffer Lane to

7 (118)	6 (119)	5 (120)	4 (241)	3 (242)	2 (243)
---------	---------	---------	---------	---------	---------

Scheffer Avenue

24 (291)	23 (290)	22 (290)	21 (149)	20 (148)	19 (148)
24 (140)	23 (141)	22 (142)	21 (149)	20 (148)	19 (148)
24 (140)	23 (141)	22 (142)	21 (149)	20 (148)	19 (148)

24 (139)	23 (122)	22 (123)	21 (124)	20 (125)	19 (126)
24 (121)	23 (122)	22 (123)	21 (124)	20 (125)	19 (126)

ADD

9 (197)	10 (160)	11 (159)	29 (158)	28 (191)
---------	----------	----------	----------	----------

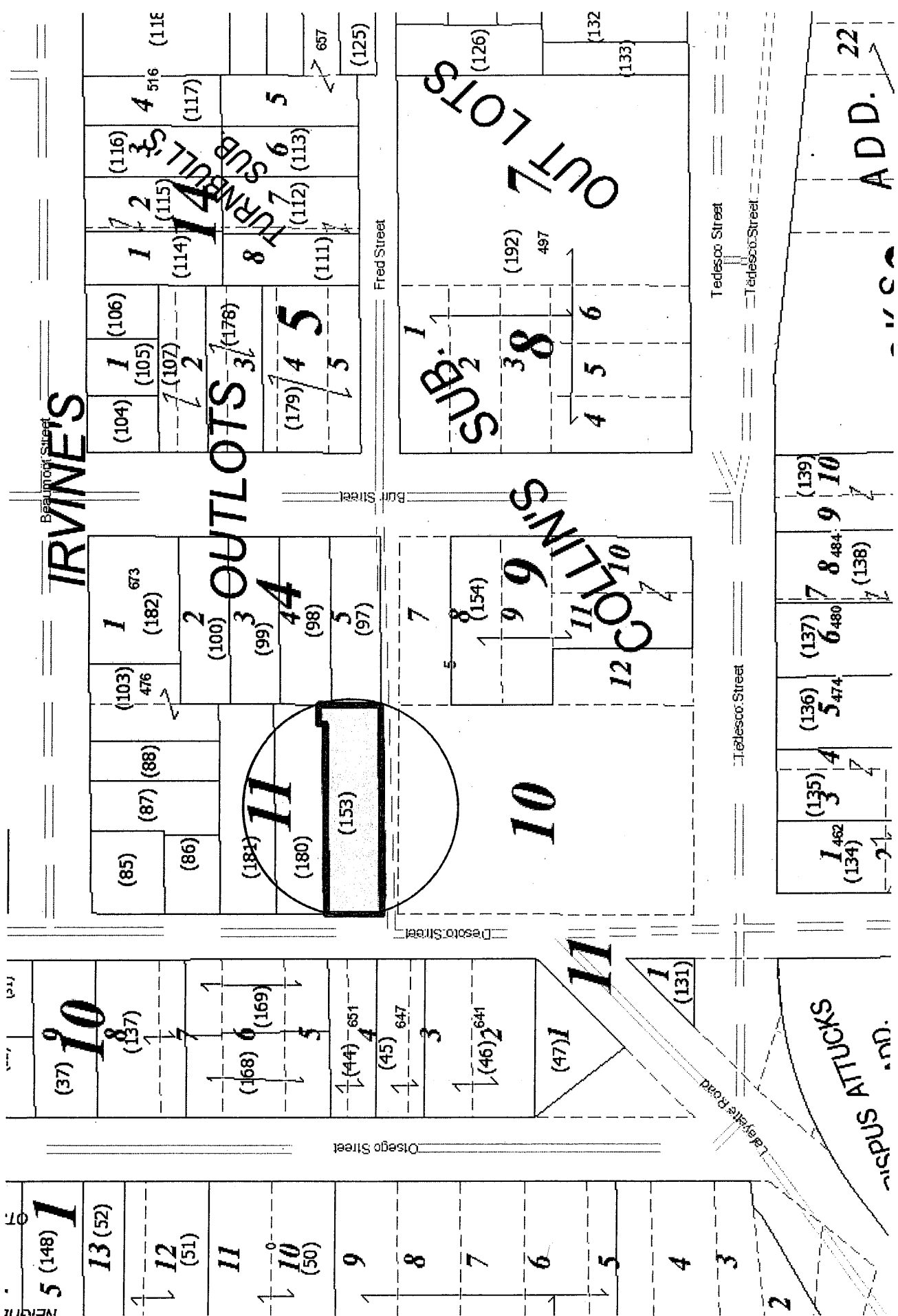
WALTON'S RE NO. 1

ADD

24 (140)	23 (141)	22 (142)	21 (149)	20 (148)	19 (148)
----------	----------	----------	----------	----------	----------

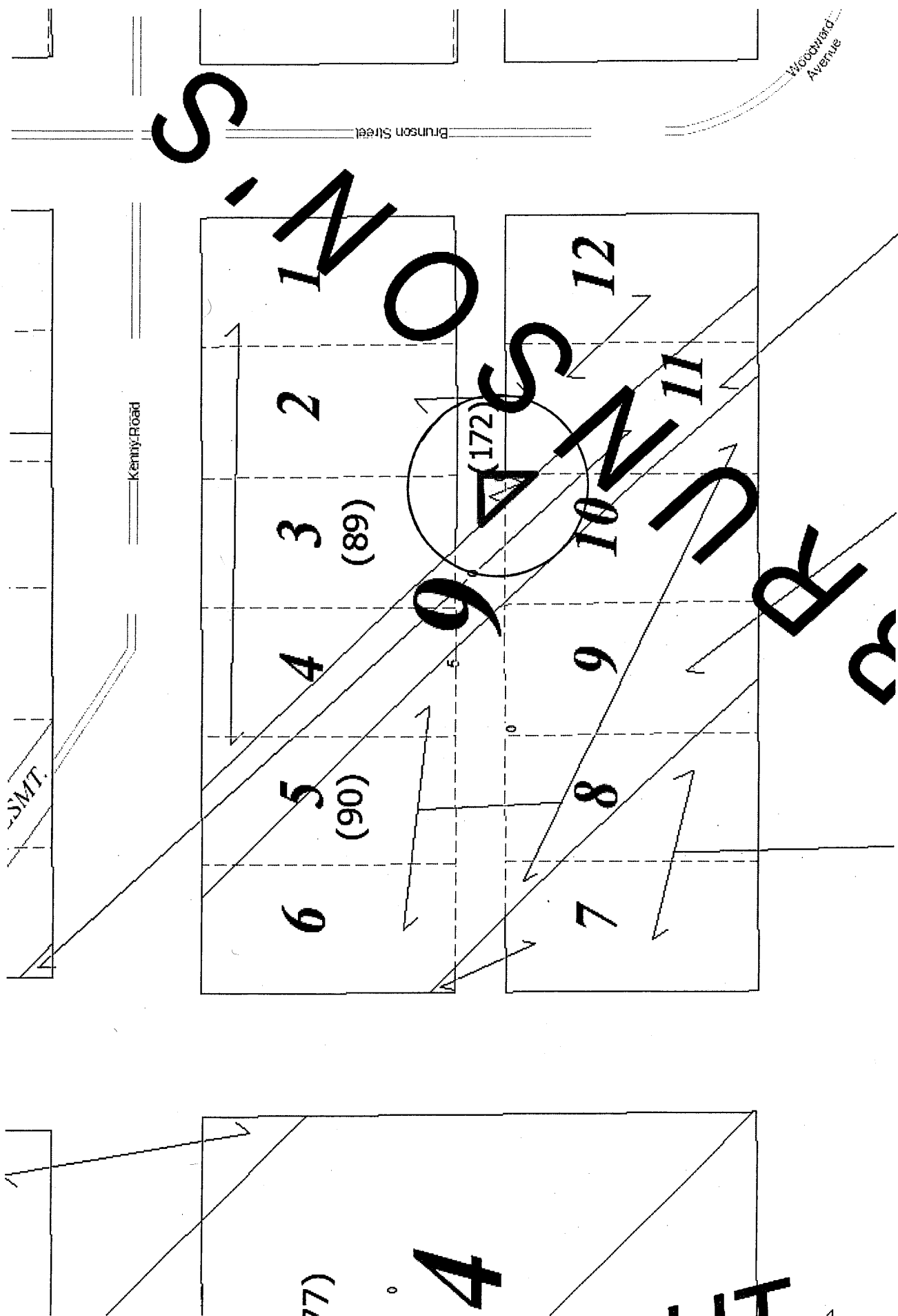


CD 5 32-29-22-21-0153 South of 660 Desoto Street





CD 5 32-29-22-24-0172 SW of 480 Kenny Road





CD 5 33-29-22-23-0103 East of 926 3rd Street E

3rd Street East

2	1	870	876
(208)	(207)		

27	28		
(232)			

1	2	3	4	5	6	7	8	9	10	11	12	13
(91)	886 (92)	888 (93)	(242)	890 (236)	900 (237)	906 (98)	910 (99)	912 (100)	914 (101)	916 (102)	918 (103)	920 (104)

28	29	30	31	32	33	34	35	36	37	38	39	40
(119)	879 (120)	(121)	(116)	(115)	(114)	(113)	(112)	(111)	(110)	(109)	(108)	(107)

5

Conway Street

DMS ADD.			
----------	--	--	--

15	16	17	18	19	20	21	22	23	24	25	26	27	28	29	30
880 (14)	884 (13)	(12)	(11)	(10)	(9)	(8)	(7)	(6)	(5)	(4)	(3)	(2)	(1)	(28)	463 (29)

6

Forest Street

15	16	17	18	19	20
480 (118)	450 (119)	(120)	(121)	(122)	(123)

13	14	15	16	17	18	19	20	21
(203)	(204)	(205)	(206)	(207)	(208)	(209)	(210)	(211)

16	17	18	19	20	21
939 (205)	(206)	(207)	(208)	(209)	(210)

15	16	17	18	19	20
480 (118)	450 (119)	(120)	(121)	(122)	(123)

16	17	18	19	20
(119)	(120)	(121)	(122)	(123)

Mendota Street

Euclid Street



CD 6 20-29-22-12-0169 Between 606-618 California Avenue E



398.91
OPENED 2-3-1966
CT. F # 345564

47

66

California Avenue East

Idaho Avenue East

Map of lots 1-5 with handwritten text:

- Lot 1: 64.47
- Lot 2: 58
- Lot 3: 58
- Lot 4: 58
- Lot 5: 58

Handwritten text: **CLAPP - TIF**

Map of lots 19-21 with handwritten text:

- Lot 19: 58
- Lot 20: 58
- Lot 21: 58

Handwritten text: **GREENBRIEF**

Map of lots 22-25 with handwritten text:

- Lot 22: 58
- Lot 23: 58
- Lot 24: 58
- Lot 25: 58

Handwritten text: **PLA**

Map of lots 1-7 with handwritten text:

- Lot 1: 58
- Lot 2: 58
- Lot 3: 58
- Lot 4: 58
- Lot 5: 58
- Lot 6: 58
- Lot 7: 58

Handwritten text: **GREENBRIEF**

Map of lots 1-7 with handwritten text:

- Lot 1: 58
- Lot 2: 58
- Lot 3: 58
- Lot 4: 58
- Lot 5: 58
- Lot 6: 58
- Lot 7: 58

Handwritten text: **GREENBRIEF**

Map of lots 1-7 with handwritten text:

- Lot 1: 58
- Lot 2: 58
- Lot 3: 58
- Lot 4: 58
- Lot 5: 58
- Lot 6: 58
- Lot 7: 58

Handwritten text: **GREENBRIEF**

CD 6 21-29-22-32-0114 Between 890-898 Cottage Avenue E

PROPERTY

Cottage Avenue East

7	51.68
2870	1876
29)	(128)
51)	126
27	28
47	(152)
47	51.75

51.68	40	40	40	40	40	40	40	40	40	125
47	40	40	40	40	40	40	40	40	40	I
17	15	14	13	12	11	10	9	8	7	1371
(116)	(115)	(114)	(113)	(112)	(111)	(110)	(109)	(108)	(107)	44
(40)								5	44	44
50	18	19	20	21	22	23	24	25	26	27
126	(117)	(118)	(119)	(120)	(121)	(122)	(123)	(124)	(125)	(126)
	(127)	28	126	40	40	40	40	40	40	40

(102)	125	I	45
(103)	2	1371	44
(104)	3	1367	44
	4	1	44
(105)	5	1363	45
(106)	6	1349	45

Mandala Street

Clear Avenue 6

Forest Street

47	51.77
2872	154
177)	(178)
27	28
47	51.84

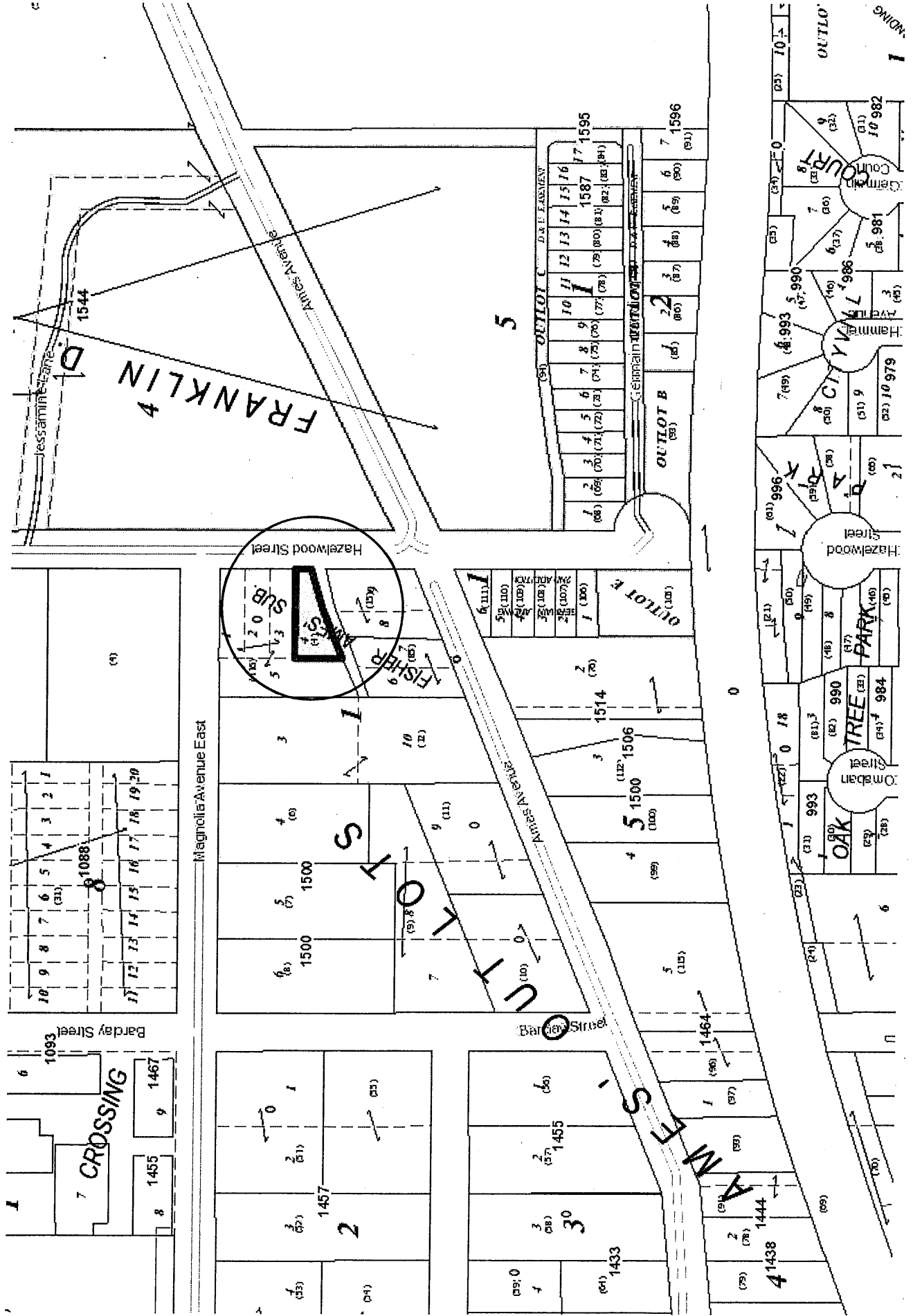
51.77	47	40	40	40	40	40	40	40	40	40	40	126
126	17	16	15	14	13	12	11	10	9	8	7	126
(191)	(190)	(189)	(188)	(187)	(186)	(185)	(184)	(183)	(182)	(181)	(180)	I
	1/2	1/2	1/2	1/2	1/2	1/2	1/2	1/2	1/2	1/2	1/2	45
18	19	20	21	22	23	24	25	26	27	28	200	126
(192)	(193)	(194)	(195)	(196)	(197)	(198)	(199)	(200)	(201)	(202)	(203)	45
51.84	47	40	40	40	40	40	40	40	40	40	40	15

(179)	125	I	45
(180)	2	1341	44
	3	1	44
	4	1331	44
(181)	5		45
(182)	6		45
(183)	7		45

Ivy Avenue East



CD 6 27-29-22-24-0004 North of 1527 Ames Avenue (Hazelwood Street)





CD 6 29-29-22-12-0201 East of 605 Magnolia Avenue E

7 (148)
6 (147)
5
4 ¹⁰⁹⁷
3 (145)
2 ¹⁰⁸⁷
1 ¹⁰⁸³

6 (190)
7 (191)
8 (192)
9 (193)
10 (194)
11 (195)

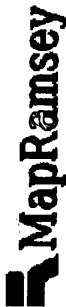
5 (189)	4 (188)	3 (187)	2 (186)	1 (185)	15 (184)	14 (183)	13 (182)	12 (181)
ADD. 2								
WARRIERS								
4								
13 (196)	14 (197)	15 (198)	16 (199)	17 (200)	18 (201)	19 (202)	20 (203)	21 (204)
11								
12								

(180) 10
(179) 9
(178) 8
(177) 7
(209) 6
(174) 5
(210) 4
(171) 3
(171) 2
(171) 1

7
6

14	13	12	11	10	9	8	7	6	5	4	3	2	1
----	----	----	----	----	---	---	---	---	---	---	---	---	---

(15) 1:



CD 6 29-29-22-14-0136 Between 710-724 Jenks Avenue

Jenks Avenue

2	1 ⁹⁷⁷
	(178) (177)

29	30 ⁹⁷⁵
	(197) (196)

9	8	7	6	5	4	3	2	1
	(138)		(137)	(136)	(135)	(134)	(133)	(732)

10	11	12	13	14	15	16	17	18
(139)	(140)	(141)	(142)	(143)	(144)	(145)	(146)	(145)

10	9	8	7	6	5	4	3	2	1
(154)	(153)	(152)	(151)	(150)	(149)	(148)	(147)	(146)	(778)

11	12	13	14	15	16	17	18	19	20
(155)	(156)	(157)	(158)	(159)	(160)	(161)	(162)	(163)	(164)

Greenbrier Street

Case Avenue

6

WEST 20 20

Wilde Street

2	3	4	5
(264)			

38	37	36	35	34
		(33)		

9	8	7	6	5	4	3	2	1
(47)	(46)	(45)	(44)	(43)	(42)	(41)	(40)	(736)

10	11	12	13	14	15	16	17	18
(48)	(49)	(50)	(51)	(52)	(53)	(54)	(55)	(56)

10	9	8	7	6	5	4	3	2	1
(28)	(27)	(26)	(25)	(24)	(23)	(22)	(21)	(20)	(19)

11	12	13	14	15	16	17	18	19	20
(29)	(30)	(31)	(32)	(33)	(34)	(35)	(36)	(37)	(38)

Sims Avenue

HILLS

ARLINGTON

19

22

23

4	3	2	1
154	1332	1338	(152)
(153)			

21	22	23	24
(167)	(168)	(169)	(169)

4	3	2	1
(68)	(68)	1344	(67)

21	22	23	24
(79)	(80)	(81)	(81)

6th Street East

6	4	3	2	1	4	3	2	1
(94)	(93)	(92)	(91)	(89)	(90)	(88)	(87)	(86)

NEWBRIDGE																	
OUILLOT B																	
1	2	3	4	5	6	7	8	9	10	11	12	13	14	15	11	2	3
(201)	(202)	(203)	(204)	(205)	(206)	(207)	(208)	(209)	(210)	(211)	(212)	(213)	(214)	(215)	(222)	(223)	(224)

NEWBRIDGE																
OUILLOT A																
2ND ADD.																
1	2	3	4	5	6	7	8	9	1	2	3	4	5	1	2	3
(181)	(182)	(183)	(184)	(185)	(186)	(187)	(188)	(189)	(190)	(191)	(192)	(193)	(194)	(201)	(202)	(203)

NEWBRIDGE			
OUILLOT A			
11	12	13	14
(11)	(12)	(13)	(14)
HAMMER'S SUB.			
17	18	19	20
(199)	(199)	(199)	(199)

12	11	10	9	8	7
(22)	(21)	(20)	(20)	(117)	(117)

NEWBRIDGE					
OUILLOT A					
15	16	17	18	19	
(200)	(200)				

NEWBRIDGE					
OUILLOT A					
15	16	17	18	19	
(200)	(200)				

NEWBRIDGE					
OUILLOT A					
15	16	17	18	19	
(200)	(200)				

Clarence Street

4th Street East

6th Street East

6th Street East

5th Street East

3

0



CD 6 34-29-22-32-0007 North of 415 Clarence Street

