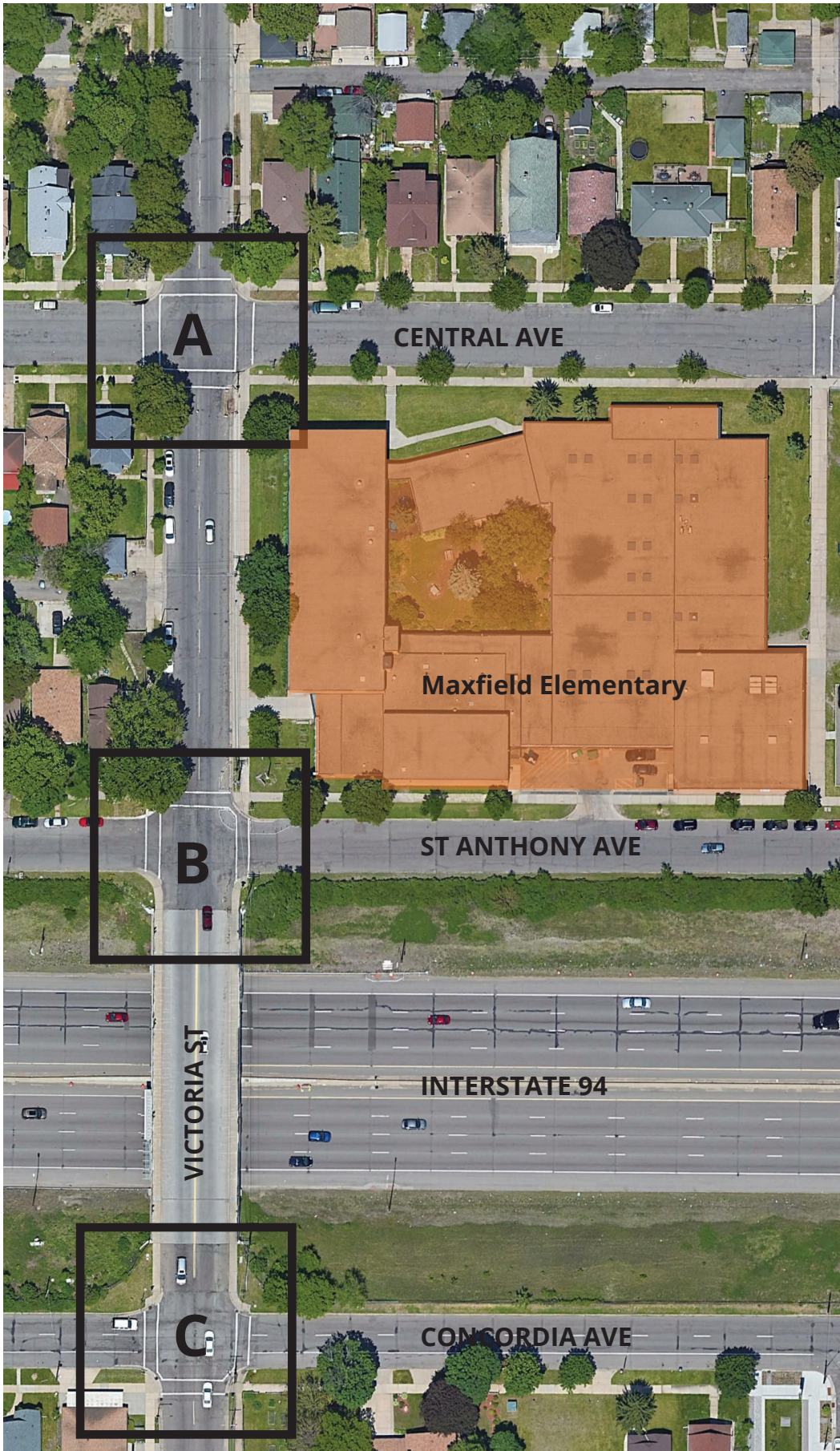




**SAINT PAUL
MINNESOTA**

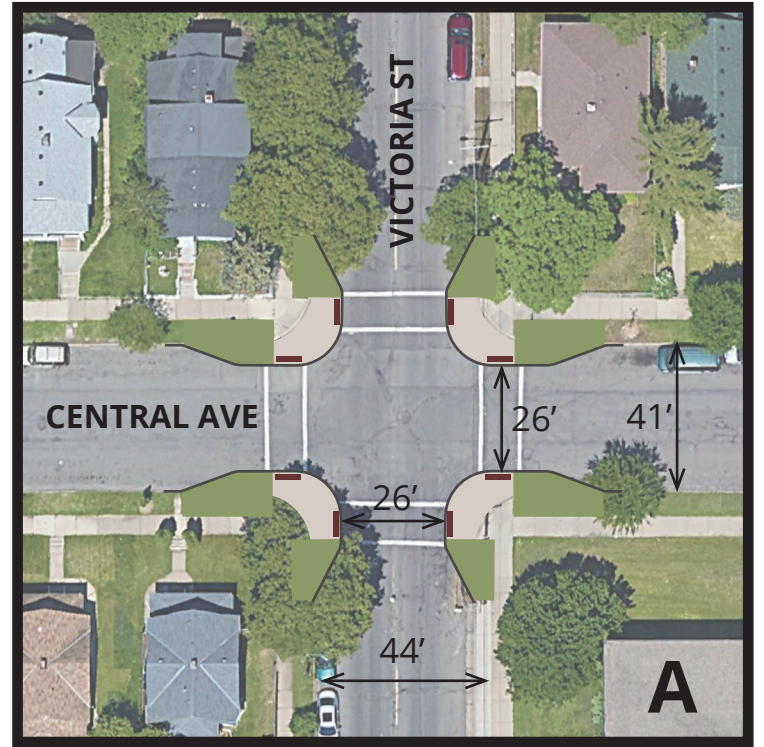
Maxfield Elementary Pedestrian Improvements

Concept Drawing and Approximate Cross Sections
City of Saint Paul Department of Public Works
January 2022

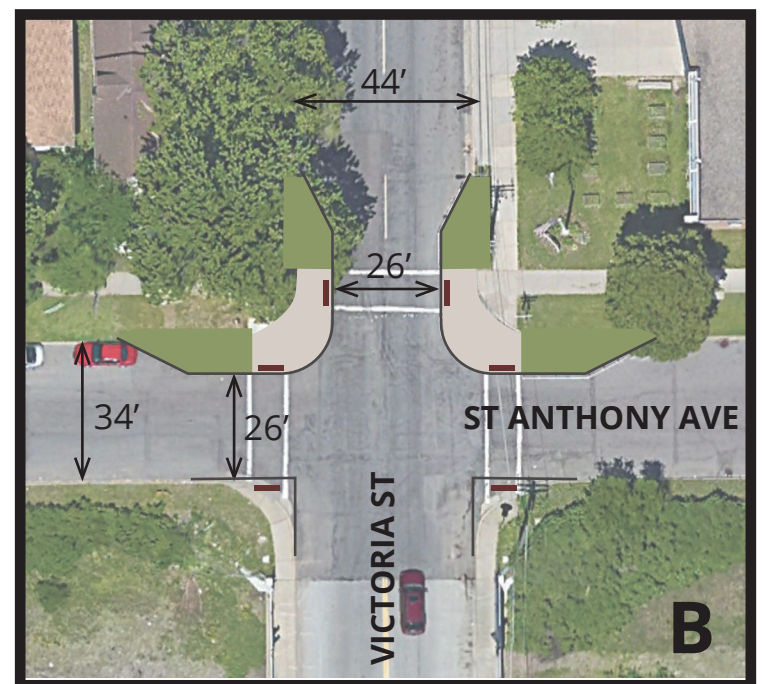


The designs proposed in this document are preliminary and conceptual. Final project elements and dimensions will depend on future engineering and design.

DRAFT

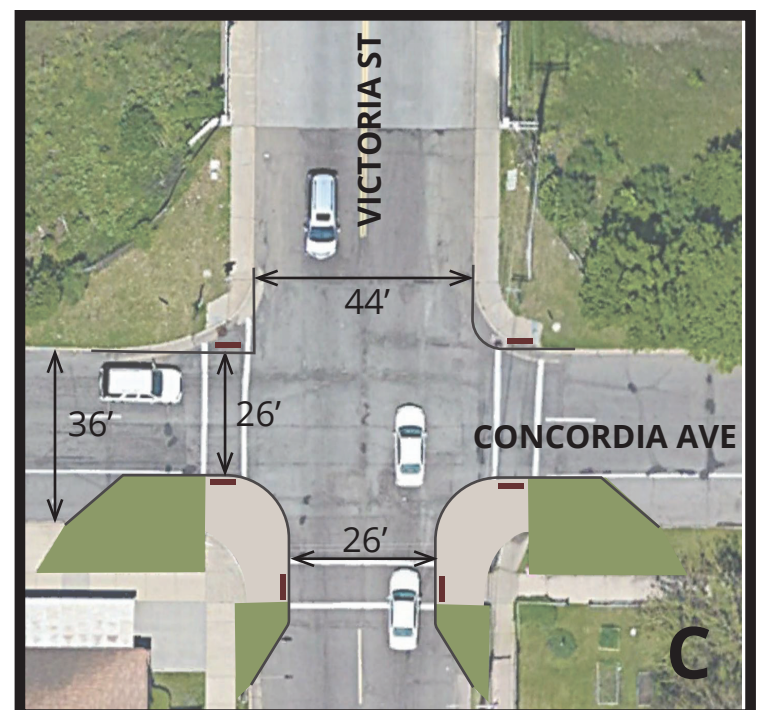


Location A. Install curb extensions on all corners to narrow all crossings to approx. 26'.



Location B. Install curb extensions on NE and NW corners to narrow N, E, W crossings to approx. 26'.

Note: This aerial is outdated; MnDOT recently replaced ramps on SE and SW corners. Approx. new curb line is shown.



Location C. Install curb extensions on SE and SW corners to narrow E, W, S crossings to approx. 26'.

Note: This aerial is outdated; MnDOT recently replaced ramps on NE and NW corners. Approx. new curb line is shown.