

Summary of Engineering Recommendations

Report Prepared: 10/18/2024
Public Hearing: 4/9/2025

PROJECT

Improve the east-west alley in Woodland Park Addition, Block 10, Lots 1 to 24 (Bounded by Laurel, Selby, Mackubin and Arundel) by grading and paving with bituminous material with 5’ brick end-sections.

INITIATING ACTION

The improvement was initiated by a petition and signed by 83% (26 of 31 households) of the abutting property owners in 2018. Properties on this alley include single family homes, condominiums, and businesses.

EXISTING CONDITIONS

The alley is platted 15 feet wide. The brick alley was constructed in 1908. Portions of the alley have been laid over with bituminous or gravel where potholes or distress occurred over times.

PROPOSED IMPROVEMENT

Grade the alley and place hot mix bituminous pavement to a width of 15 feet. Driveway apron at alley access points will be replaced as necessary for proposed design or meet city’s standards.

ESTIMATED COST AND FINANCING

| | |
|---------------------------------------|----------------------|
| Estimated Construction Cost | \$ 155,063.29 |
| Engineering and Inspection (30%) | \$ 46,518.99 |
| Contingency & Miscellaneous (20%) | \$ 31,012.66 |
| <u>Real Estate Fee (8%)</u> | <u>\$ 12,405.06</u> |
| Estimated Total Expenditures | \$ 245,000.00 |
| | |
| Financing – Assessments (25%) | \$ 61,250.00 |
| <u>Financing – City General Funds</u> | <u>\$ 183,750.00</u> |
| Estimated Total Financing | \$ 245,000.00 |

Special Benefit Analysis will be applied as outlined by city special assessment policy and practices.

SOURCE OF ADDITIONAL INFORMATION

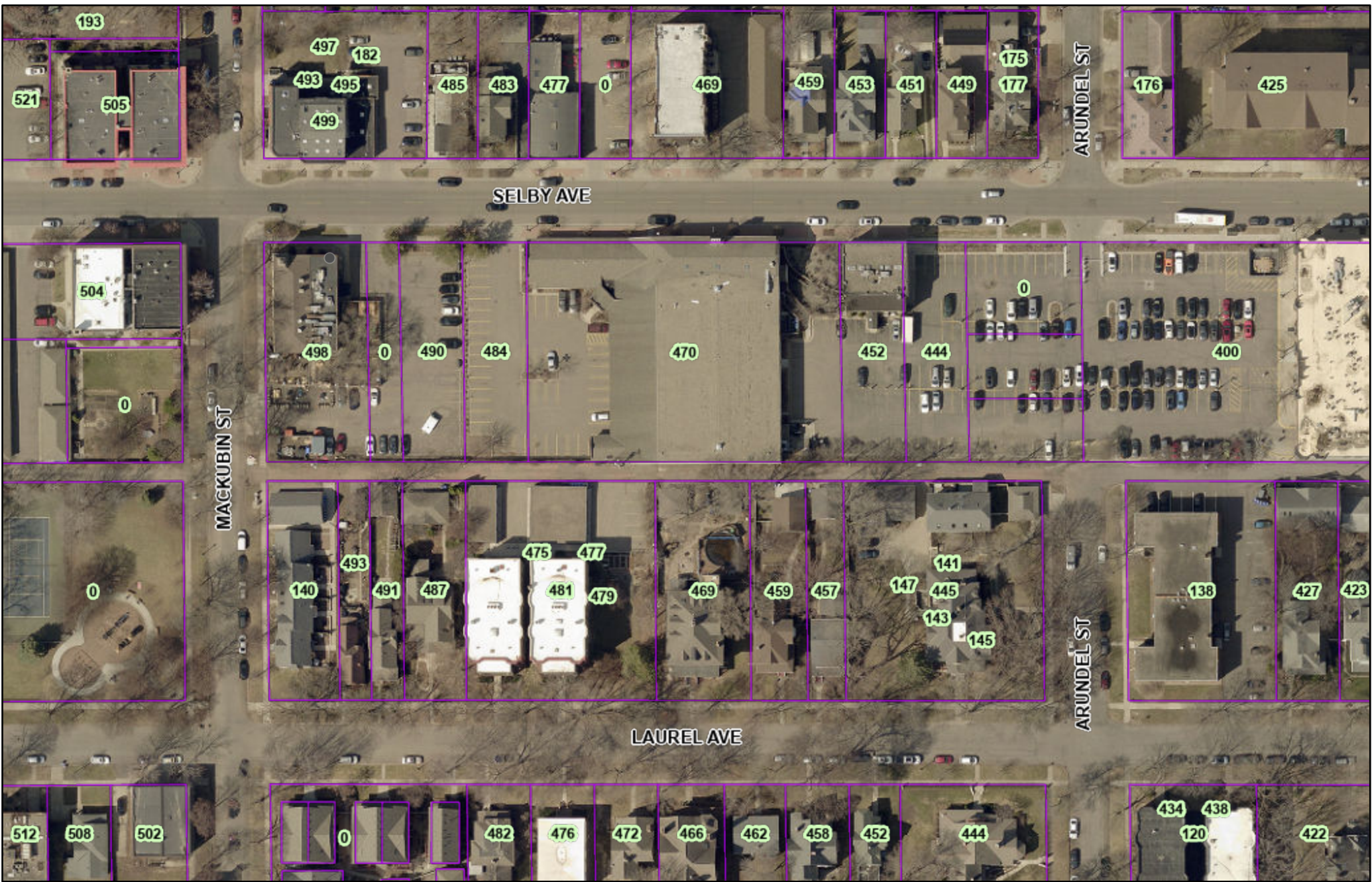
For additional information, contact Cheng Xiong at 651-266-6168

SUMMARY OF RECOMMENDATIONS

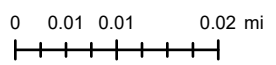
The Department of Public Works has ranked this as a priority and the Engineering Recommendation is for approval of the project and funding.

Respectfully submitted,

Cheng Xiong
Cheng Xiong, PE



City of Saint Paul - Public Works



The Geographic Information System (GIS) Data to which this notice is attached are made available pursuant to the Minnesota Government Data Practices Act (Minnesota Statutes Chapter 13). The GIS Data are provided to you "AS IS" and without any warranty as to their performance, merchantability, or fitness for any particular purpose. The GIS Data were developed by the City of Saint Paul for its own internal business purposes. The City of Saint Paul does not represent or warrant that the GIS Data or the data documentation are error-free, complete, current, or accurate. You are responsible for any consequences resulting from your use of the GIS Data or your reliance on the GIS Data. You should consult the data documentation for this particular GIS Data to determine the limitations of the GIS Data and the precision with which the GIS Data may depict distance, direction, location, or other geographic features. If you transmit or provide the GIS Data (or any portion of it) to another user, the GIS Data must include a copy of this disclaimer.