

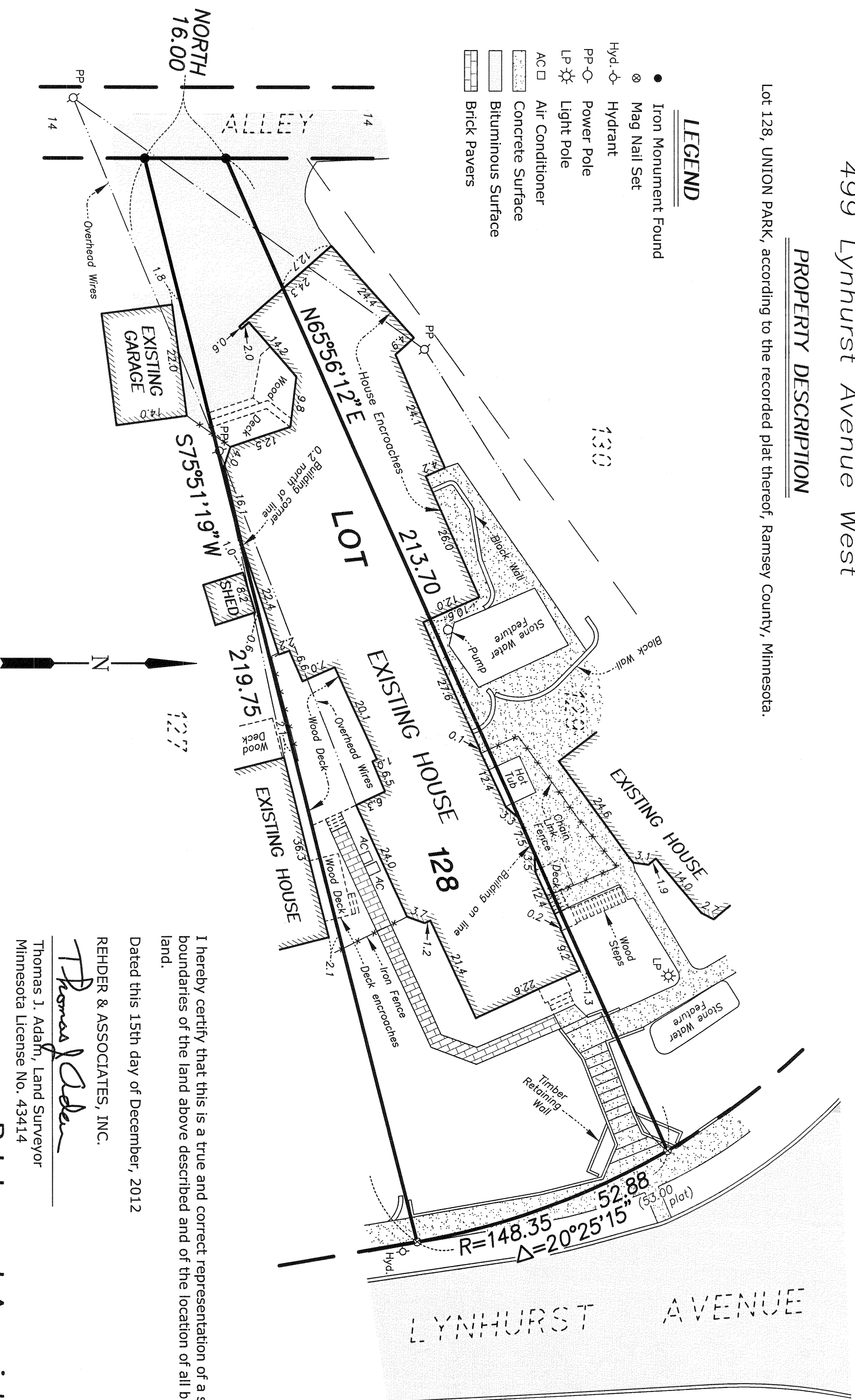
Lot Survey for:
REITER & SCHILLER, P.A.
 499 Lynhurst Avenue West

PROPERTY DESCRIPTION

Lot 128, UNION PARK, according to the recorded plat thereof, Ramsey County, Minnesota.

LEGEND

- Iron Monument Found
- ⊗ Mag Nail Set
- Hyd. ⦿ Hydrant
- PP-○ Power Pole
- LP ⦿ Light Pole
- AC □ Air Conditioner
- Concrete Surface
- Bituminous Surface
- Brick Pavers



I hereby certify that this is a true and correct representation of a survey of the boundaries of the land above described and of the location of all buildings on said land.

Dated this 15th day of December, 2012

REHDER & ASSOCIATES, INC.

Thomas J. Adam
 Thomas J. Adam, Land Surveyor
 Minnesota License No. 43414

Rehder and Associates, Inc.

CIVIL ENGINEERS AND LAND SURVEYORS
 3440 Federal Drive • Suite 110 • Edgemoor, Minnesota • Phone (651) 452-5051

JOB: 104-2412.020