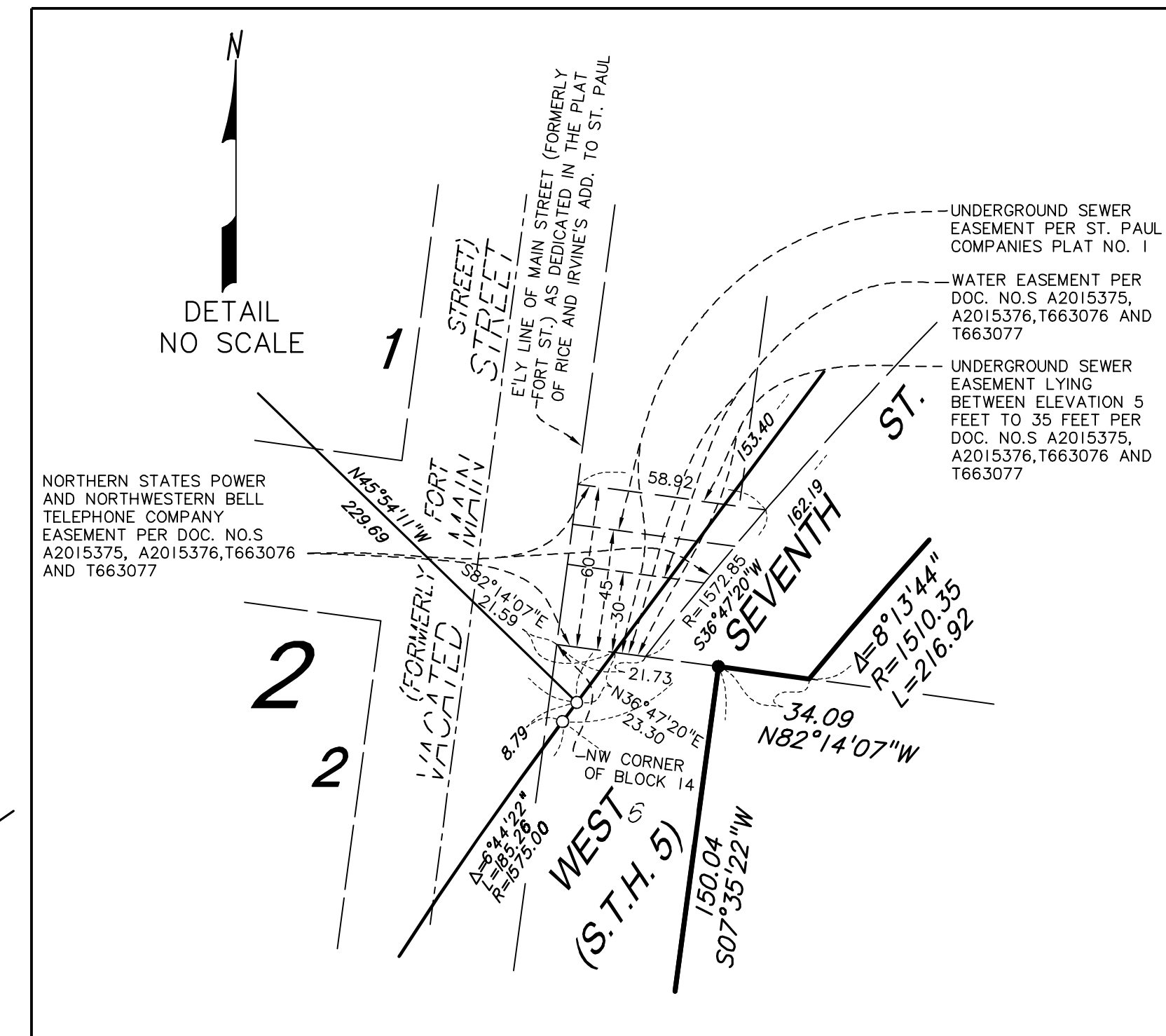


CLEVELAND CIRCLE



**PRELIMINARY
SUBJECT TO REVISION**

- Denotes 1/2 inch by 14 inch iron pipe monument set and marked with PLS 44900, unless otherwise noted
- ⊙ Denotes set 1.17 inch diameter copper magnetized marker with disc cap affixed stamped LS 44900
- Denotes found 1/2 inch iron pipe monument stamped with plastic cap marked RLS No. 15480, unless otherwise noted.

[AZ 277°26'32"] Denotes azimuth calls as described in the exception of the legal description.

Orientation of this bearing system is based upon Ramsey County Coordinates, North American Datum of 1983, 1986 Adjustment.

