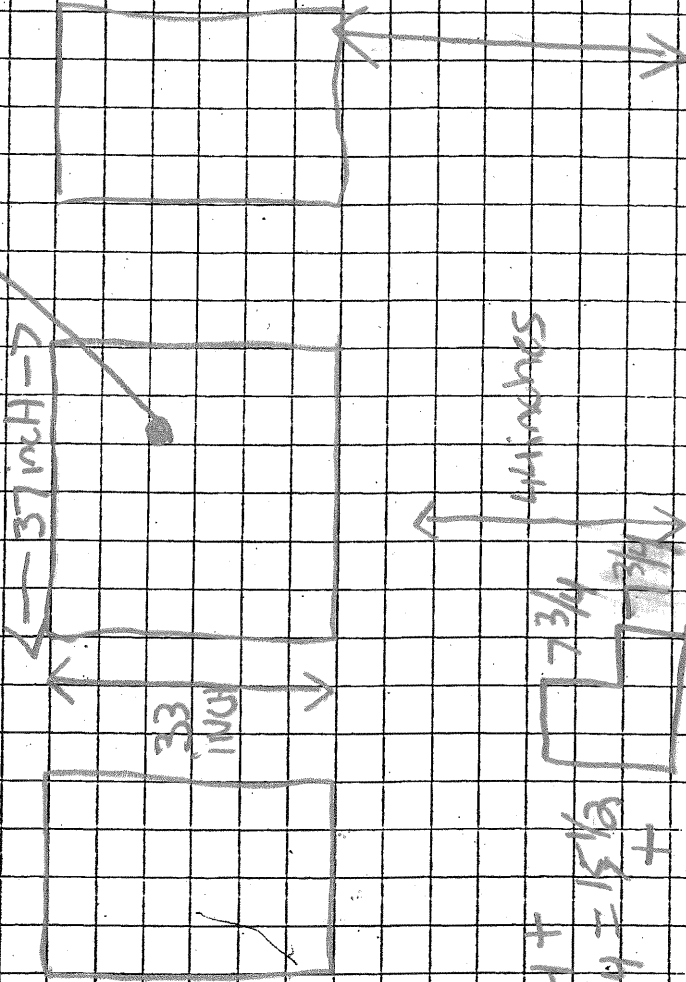


733 JENKS

$$37\text{in} \times 33\text{in} = 1221 = 8.47 \text{ sqft}$$



$$\begin{aligned} 7\frac{3}{4} + \\ 7\frac{3}{4} &= 15\frac{1}{2} \\ + \\ 44 &= 59\frac{1}{2} \end{aligned}$$

