

When contains unincorporated value.

0	9	8	7
7	47	47	18
3	RANDOLPH AVE.	27.9	30.5
		1.88	1.88

TAKEN FOR RANDOLPH AVE.
DOC# 1479203.

163

TAKEN FOR RANDOLPH AVE.

122.18

RANDOLPH

380.79

449.76

317.2

546.64311

310.9

157.05

4332

1734

248.95

538.71

165.27

R=593.69

633.66

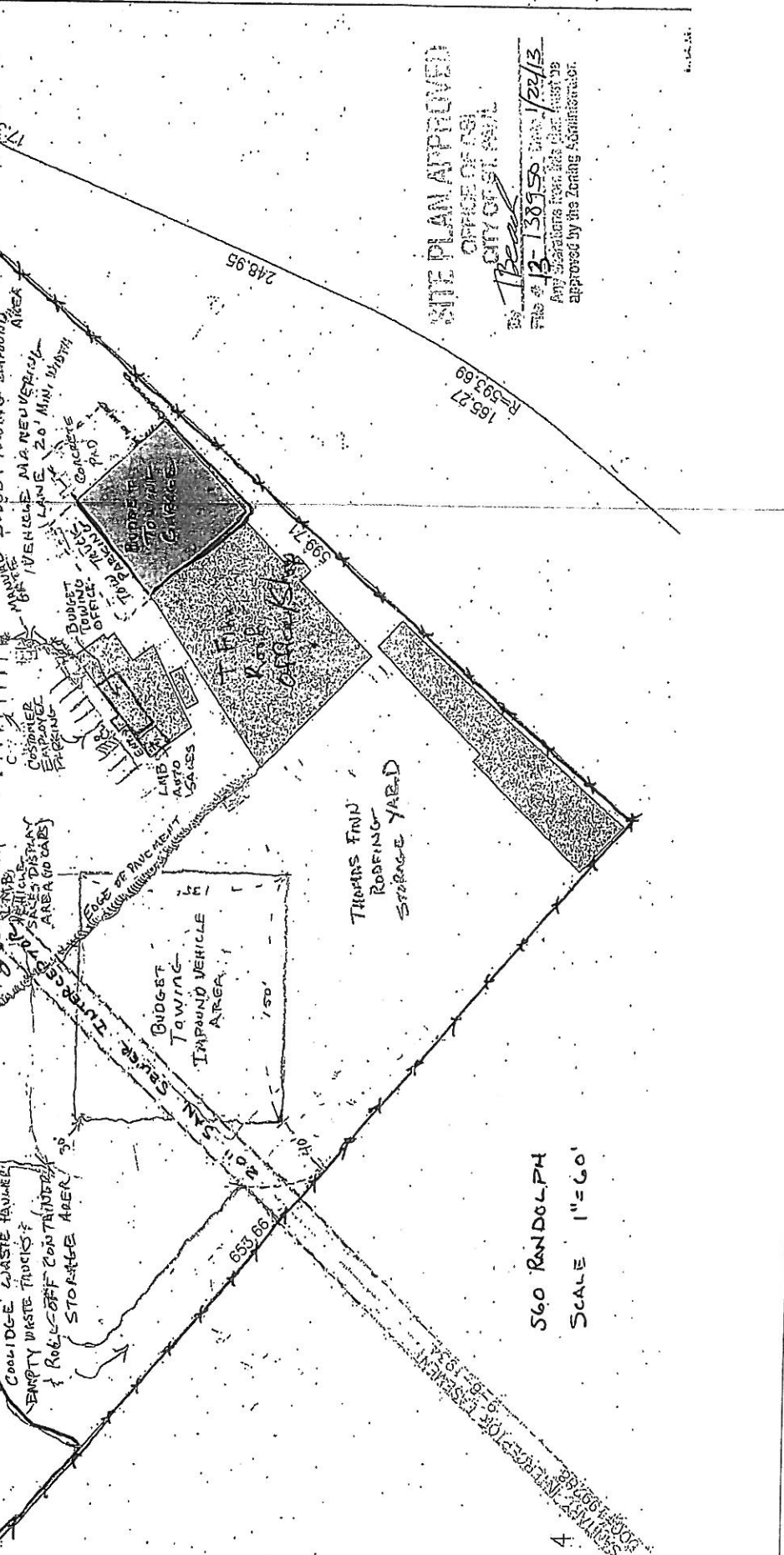
201.10

110

150

1734

157.05



SITE PLAN APPROVED
OFFICE OF ZONING
CITY OF ST. PAUL

12/22/13
File # 12-138959
Any conditions imposed on this plan must be approved by the Zoning Administrator.

S60 RANDOLPH
SCALE 1"=60'

11.11.13