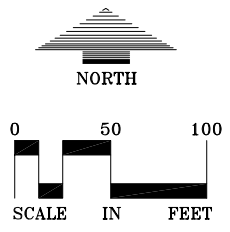


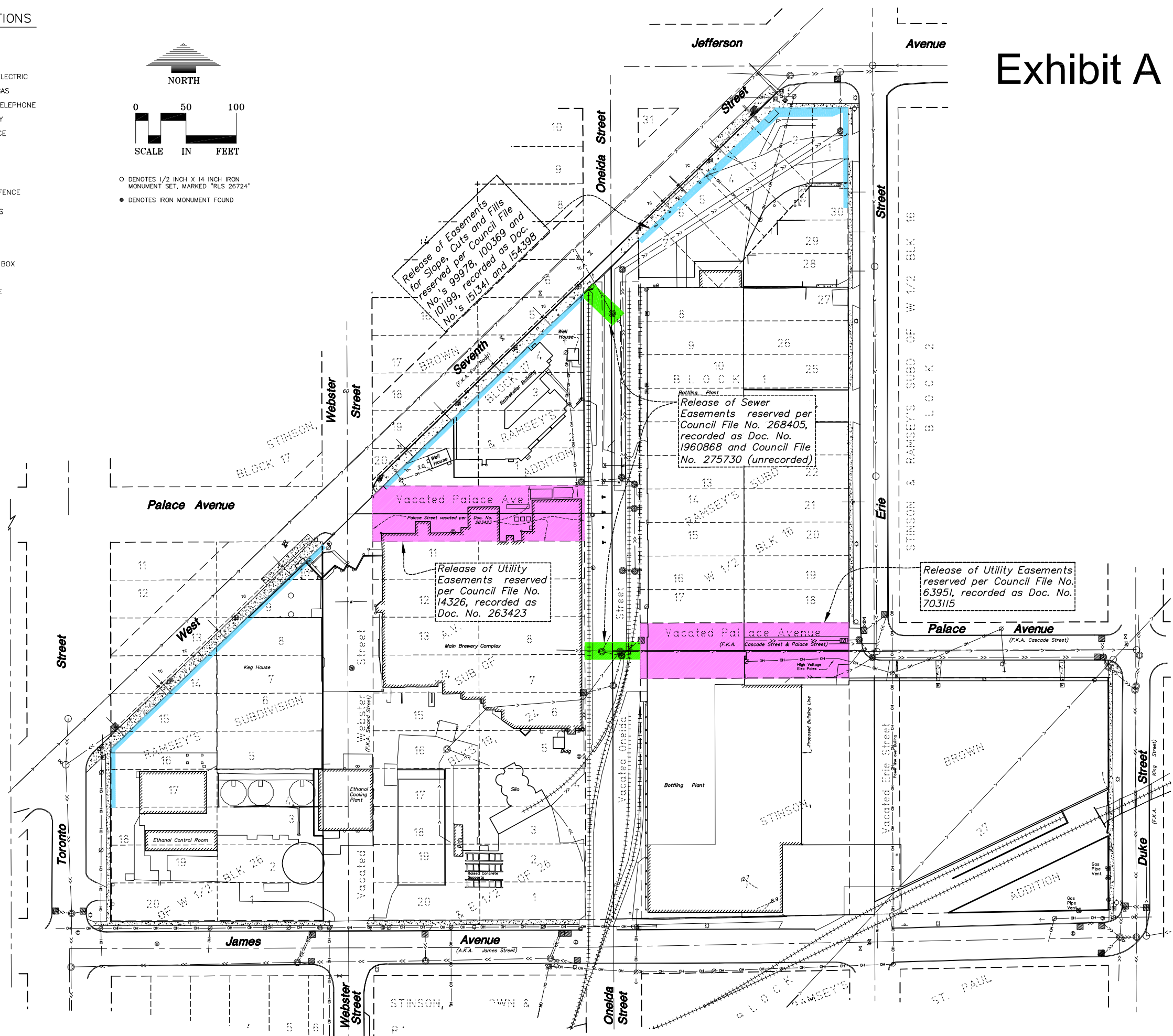
**SURVEY LEGEND – EXISTING CONDITIONS**

- CATCH BASIN
- STORM MANHOLE
- SANITARY MANHOLE
- WATER MANHOLE
- HYDRANT
- GATE VALVE
- TELEPHONE PEDESTAL
- POWER POLE
- LIGHT POLE
- SIGN
- SPOT ELEVATION
- CONIFEROUS TREE
- DECIDUOUS TREE
- ASH
- COTTONWOOD
- MAPLE
- SPRUCE
- TREE (GEN)
- WILLOW
- GUY WIRE
- TELEPHONE PEDESTAL
- UTILITY PEDESTAL
- ELECTRIC MANHOLE
- MONITORING WELL
- FUEL OIL MH
- STORM SEWER
- SANITARY SEWER
- WATERMAIN
- UNDERGROUND ELECTRIC
- UNDERGROUND GAS
- UNDERGROUND TELEPHONE
- OVERHEAD UTILITY
- CHAIN LINK FENCE
- CONCRETE CURB
- CONCRETE
- CONTOUR
- WROUGHT IRON FENCE
- RAILROAD TRACKS
- TRAFFIC SIGNAL
- GUARDRAIL
- TRAFFIC SIGNAL BOX
- GAS VALVE
- UTILITY MANHOLE
- GAS METER
- HAND HOLE
- GUARDPOST
- VAULT
- ROOF DRAIN



○ DENOTES 1/2 INCH X 14 INCH IRON MONUMENT SET, MARKED "RLS 26724"  
 ● DENOTES IRON MONUMENT FOUND

- Utility Easements
- Sewer Easements
- Slope Easements



# Exhibit A

Project Name:  
**Schmidt Brewery Housing Redevelopment**

St. Paul, Minnesota

Owner/Developer:  
 Dominion

Professional Services:  
  
 Planning • Civil Engineering • Land Surveying  
 Landscape Architecture • Environmental

7200 Hennock Lane - Suite 300  
 Maple Grove, Minnesota 55369  
 Telephone: (763) 424-5505  
 www.LoucksAssociates.com

© 2004

CADD Qualification:  
 CADD files prepared by the Consultant for this project are instruments of the Consultant's professional services for use solely with respect to this project. These CADD files shall not be used on other projects, for additions to this project, or for completion of this project by others without written approval by the Consultant. With the Consultant's approval others may be permitted to obtain copies of the CADD drawing files for information and reference only. All intentional or unintentional revisions, additions, or deletions to these CADD files shall be made at the full risk of that party making such revisions, additions or deletions and that party shall hold harmless and indemnify the Consultant from any & all responsibilities, claims, and liabilities.  
 S10072-EXI-ESMT RELEASE.DWG/Esmt Release Exh

Revisions:  
 5-21-12 Original Issue

Professional Signature:  
 I hereby certify that this survey, plan or report was prepared by me or under my direct supervision and that I am a duly Licensed Land Surveyor under the laws of the State of Minnesota.

Richard L. Licht - PLS  
 26724 License No. Date

Quality Control:  
 TMB

Project Lead: RLL Drawn By: TMB  
 Checked By: RLL Review Date:

Vicinity Map:

Sheet Title:  
**Easement Release Exhibit**

Project No.:  
 10-072

Sheet No.: