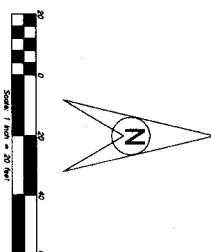
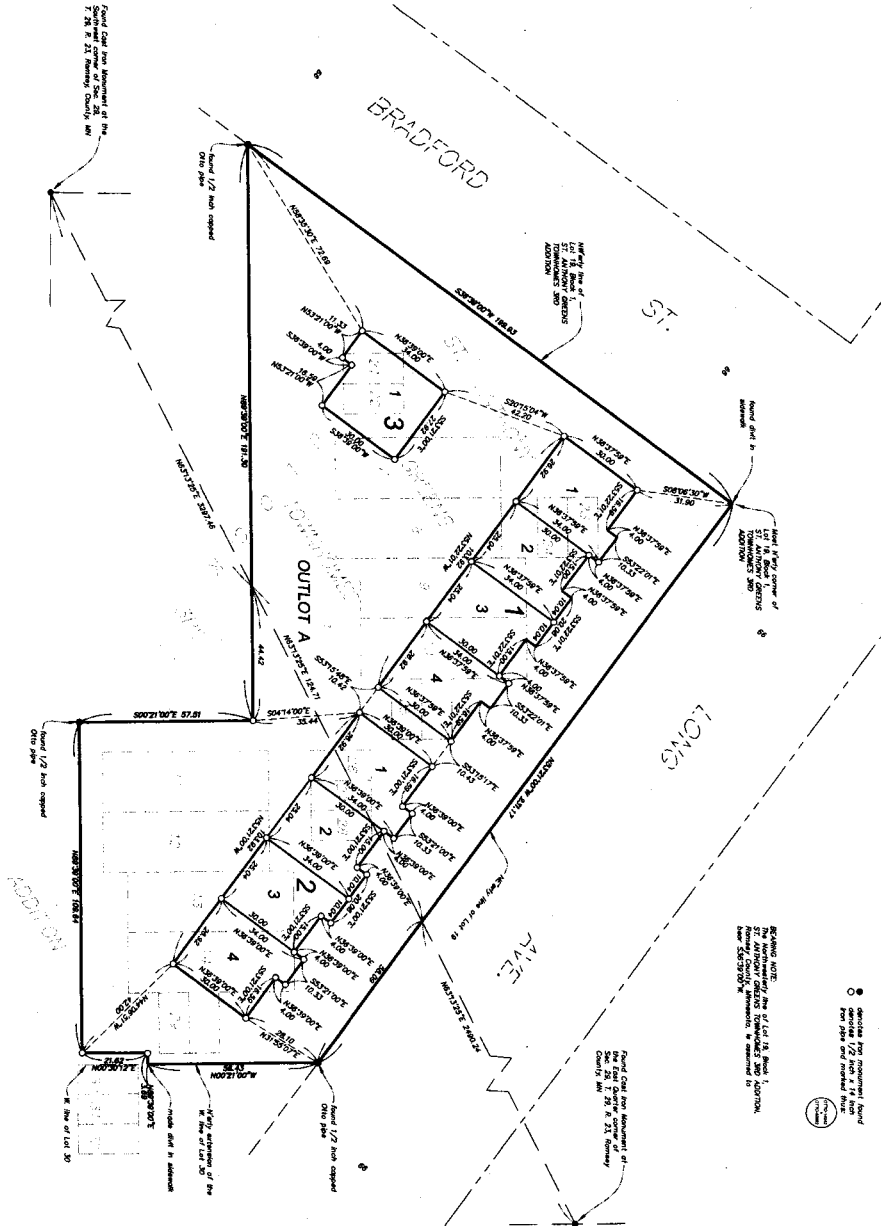
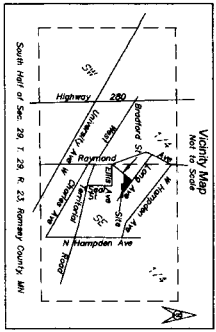


ST. ANTHONY PARK TOWNHOMES



RECORDS NOTE:
 The first plat for the subdivision of Lot 18, Block 1, St. Anthony Park Townhomes, is recorded in Ramsey County, Minnesota, in recording book 536373/20.

THIS PART OF LOT 18 OF THE FIRST PLAT, SUBDIVISION OF LOT 18, BLOCK 1, ST. ANTHONY PARK TOWNHOMES, IS HEREBY SET APART AS SEVERAL UNITS TO BE USED AS TOWNHOMES. THE SEVERAL UNITS ARE DESCRIBED AS FOLLOWS:

UNIT 1: A certain lot of land, more or less, bounded on the north by the Bradford Avenue easement, on the east by the Loms Avenue easement, on the south by the Bradford Avenue easement, and on the west by the Bradford Avenue easement, containing 1,722 sq. ft. of land.

UNIT 2: A certain lot of land, more or less, bounded on the north by the Bradford Avenue easement, on the east by the Loms Avenue easement, on the south by the Bradford Avenue easement, and on the west by the Bradford Avenue easement, containing 1,722 sq. ft. of land.

UNIT 3: A certain lot of land, more or less, bounded on the north by the Bradford Avenue easement, on the east by the Loms Avenue easement, on the south by the Bradford Avenue easement, and on the west by the Bradford Avenue easement, containing 1,722 sq. ft. of land.

UNIT 4: A certain lot of land, more or less, bounded on the north by the Bradford Avenue easement, on the east by the Loms Avenue easement, on the south by the Bradford Avenue easement, and on the west by the Bradford Avenue easement, containing 1,722 sq. ft. of land.

UNIT 5: A certain lot of land, more or less, bounded on the north by the Bradford Avenue easement, on the east by the Loms Avenue easement, on the south by the Bradford Avenue easement, and on the west by the Bradford Avenue easement, containing 1,722 sq. ft. of land.

UNIT 6: A certain lot of land, more or less, bounded on the north by the Bradford Avenue easement, on the east by the Loms Avenue easement, on the south by the Bradford Avenue easement, and on the west by the Bradford Avenue easement, containing 1,722 sq. ft. of land.

UNIT 7: A certain lot of land, more or less, bounded on the north by the Bradford Avenue easement, on the east by the Loms Avenue easement, on the south by the Bradford Avenue easement, and on the west by the Bradford Avenue easement, containing 1,722 sq. ft. of land.

UNIT 8: A certain lot of land, more or less, bounded on the north by the Bradford Avenue easement, on the east by the Loms Avenue easement, on the south by the Bradford Avenue easement, and on the west by the Bradford Avenue easement, containing 1,722 sq. ft. of land.

UNIT 9: A certain lot of land, more or less, bounded on the north by the Bradford Avenue easement, on the east by the Loms Avenue easement, on the south by the Bradford Avenue easement, and on the west by the Bradford Avenue easement, containing 1,722 sq. ft. of land.

UNIT 10: A certain lot of land, more or less, bounded on the north by the Bradford Avenue easement, on the east by the Loms Avenue easement, on the south by the Bradford Avenue easement, and on the west by the Bradford Avenue easement, containing 1,722 sq. ft. of land.

UNIT 11: A certain lot of land, more or less, bounded on the north by the Bradford Avenue easement, on the east by the Loms Avenue easement, on the south by the Bradford Avenue easement, and on the west by the Bradford Avenue easement, containing 1,722 sq. ft. of land.

UNIT 12: A certain lot of land, more or less, bounded on the north by the Bradford Avenue easement, on the east by the Loms Avenue easement, on the south by the Bradford Avenue easement, and on the west by the Bradford Avenue easement, containing 1,722 sq. ft. of land.

Now cover the same to be surveyed and plat as ST. ANTHONY PARK TOWNHOMES in Ramsey County and Ramsey County, LLC, a Minnesota limited liability company, as agent for the owner, the _____ of _____, MN.

Signed: REB Holdings, LLC

Ray J. Hahn, President
 STATE OF MINNESOTA
 COUNTY OF _____
 I, _____, of the County of _____, State of Minnesota, am authorized to execute this instrument on behalf of the company.

(Notary Signature) _____
 Notary Public, _____ County, Minnesota
 My commission expires: _____

Paul E. O'Connell, Professional Land Surveyor
 STATE OF MINNESOTA
 COUNTY OF _____
 I, Paul E. O'Connell, a Professional Land Surveyor, do hereby certify that the plat of the subdivision of Lot 18, Block 1, St. Anthony Park Townhomes, is correct and true to the original survey and to the records of the County of _____, State of Minnesota, in recording book 536373/20.

(Notary Signature) _____
 Notary Public, _____ County, Minnesota
 My commission expires: _____

Department of Property, Finance and Assessment
 Ramsey County, Minnesota
 I hereby certify that the plat of St. Anthony Park Townhomes was filed in the office of the County Recorder for public record on this _____ day of _____, 20____.

County Recorder, County of Ramsey, State of Minnesota

 I hereby certify that the plat of St. Anthony Park Townhomes was filed in the office of the County Recorder for public record on this _____ day of _____, 20____.

County Recorder, County of Ramsey, State of Minnesota

