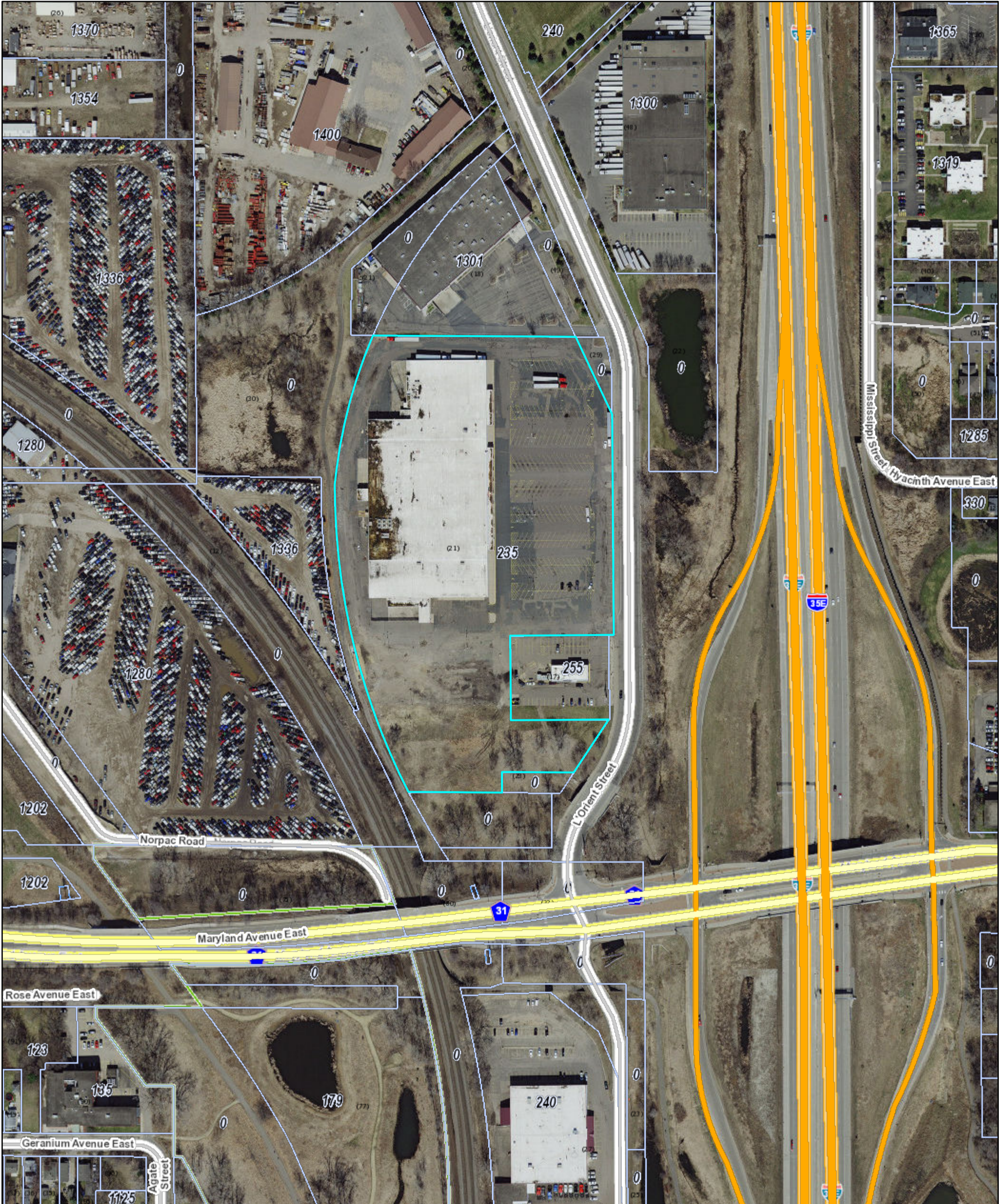


Exhibit A - Shidler "Access Property"



3/6/2021, 5:21:57 AM

- | | |
|---------------------|---|
| Streets | Privately Maintained Public Access Road |
| Interstate | Alleyway |
| US or State Highway | Personal Property |
| Connector (Ramp) | Tax Parcels |
| County Road | Cities |
| Local Road | County Offices |

1:2,400

