

## Public Safety

- CPTED
    - Crime Prevention Through Environmental Design
      - Planning and Economic Development, Planning Commission
- Urban Design: Sites and Buildings**
- Improve public safety by incorporating Crime Prevention Through Environmental Design (CPTED) principles into new residential and commercial developments, as well as in public spaces.

## Public Safety

- CPTED
    - Crime Prevention Through Environmental Design
      - Parks & Rec
- 1.7. Apply Crime Prevention through Environmental Design (CPTED) principles and design review for parks projects.**
- CPTED improves safety by applying design principles to the environment rather than focusing on hard security measures. Some of the issues that CPTED addresses include visibility within spaces and mobility options for people moving through spaces. The perception of safety, gained through environmental cues, results in real safety that lessens the need for enforcement staff. Parks design projects should involve CPTED staff as early as possible for maximum effectiveness.

## Public Safety

- CPTED
  - Crime Prevention Through Environmental Design
    - Law enforcement
      - SPPD, Ramsey County

## Public Safety

- CPTED
    - Crime Prevention Through Environmental Design
      - Law enforcement
        - SPPD, Ramsey County
- “ Make sure the sales counter can be seen clearly. Don't put up advertisements, flyers, displays, signs, posters or other items on windows or doors that might obstruct the view of the register from inside or outside your business. The police cruising by your store need to see in.”

**SAINT PAUL MINNESOTA** The most lovable city in America.

**CPTED** Crime Prevention Through Environmental Design

**Services Requested:** Employment, Education, Law Enforcement, Law Enforcement - Small Business

**CPTED** is a crime prevention concept which believes the physical environment can be changed to produce behavioral effects. This concept idea heavily on the use of access control, natural surveillance, and territorial reinforcement to make the program a viable crime deterrent.

For further information, contact Officer Jeff Jacobson at (651) 266-5625.

### Public Safety

"Consider where the cash register is located within the store. It should be visible from the inside, and outside of the store. Front doors and windows should be kept clear of signs and posters to allow good, two-way visibility at the cash register area.

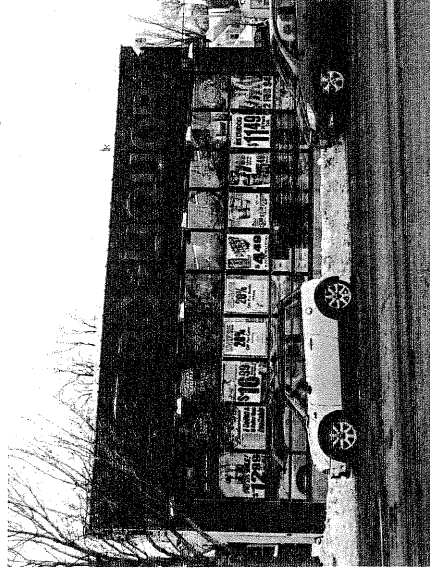
If signs must be posted, they should be placed to the side of the store's windows, either high or low enough to retain visibility...

Employees should be able to see clearly outside in order to spot suspicious persons..."

### Public/Police Safety



### Public/Police Safety



### Public/Police Safety

