

OUR COORDINATED RESPONSE TO THE HOUSING CRISIS EXACERABTED BY COVID-19

Update to the Saint Paul City Council
Deputy Mayor Jaime Tincher
January 13, 2021



SAINT PAUL
MINNESOTA

ACTION PLAN 1 (Long-term Plan) **slide from 9.16.2020*

Issue to solve

- Significant increased need for shelter, housing supports, and affordable housing options for individuals experiencing homelessness as a result of COVID-19

Primary strategy

- Identify new housing and shelter spaces that meet specific needs of those experiencing homelessness
- Provide more options for 24/7 with wrap-around services, as well as more “day-space” locations and services.

Progress

- Funding matrix in place
- Four to five potential sites identified; need to be fully evaluated
- Broker working with City to help assess readiness, feasibility

EXPANDED SHELTER OPTIONS

BETHESDA



Current added capacity: 70 private rooms

(plan to ramp up to 100)

EXPANDED SHELTER OPTIONS

MARY HALL



Capacity: 134 private rooms
(single adult men)

LUTHER SEMINARY/ STUB HALL

EXPANDED
SHELTER
OPTIONS



Capacity: 50 private rooms
(women and couples)

TEMPORARY EMERGENCY SHELTERS

Harriet Island and Duluth & Case





RAMSEY
COUNTY

Shelter and Hotel Process Map

1. REFERRAL
Referral source provides information to Ramsey County referral staff by email (preferred) or phone

Referral Hours
Daily from 7:00 AM – 5:00 PM

Contact Info AdultShelterReferral@ramseycounty.us
Sunday – Wednesday (612) 427-0118
Wednesday – Saturday (612) 427-0119

Exceptions
All exceptions to this process must be approved by the Operation's Manager.

Alex Cleaveland
Alexander.Cleaveland@ramseycounty.us
(651) 252-9272

2. SCREENING
Ramsey County referral staff screens for appropriate capacity and placement location

3. TRANSPORTATION
Ramsey county referral staff or referral source arranges transportation to the appropriate shelter

Mary Hall
Single adult men

Luther Seminary
Women and couples - couples may share rooms; LGBTQ+ couples are welcomed

4. HOTEL PROGRAMS
Ramsey County referral staff arranges appropriate hotel placement of eligible resident(s) who have stayed for at least seven (7) successful days at Mary Hall or Luther Seminary

Bethesda
Single adult men and respite (women and men)

Capital Ridge
Elders

Como
Women and couples

Hotel 100
Population to be determined

SAFE AND STABLE SHELTER OPERATIONS



24/7 On-site Staffing

- Staff reflect the residents and have diverse experiences
- Build relationships with residents
- CPR and Narcan trained

Wraparound Services

- 3 meals per day provided
- On-site mental health services
- Transportation services
- Health care and nursing

Pathways to Housing Stability

- On-site benefit and housing navigation
- Removing barriers for housing readiness

Trauma-informed Security

- Rooted in de-escalation
- Aware of mental health crises
- 24/7 presence
- Inside and outside facility



ACTION PLAN 2 (Immediate Response) **slide from 9.16.2020*

Issue to solve: Significant increased need for supports for individuals experiencing homelessness as a result of COVID-19

Primary strategy: Mobilize and coordinate resources of all partners to get individuals indoors and on pathways to housing and supports they need

Secondary strategy: Directly support the current needs of occupants at temporary encampments:

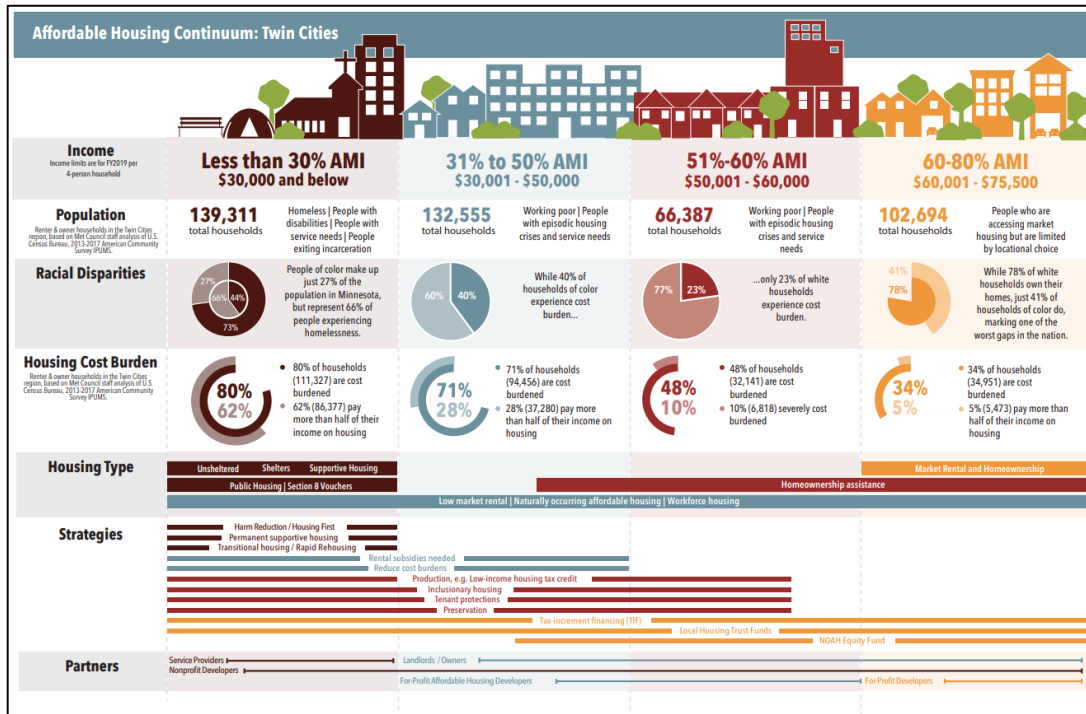
- InvolveMN partnering now with City to provide up to 500 meals a day, delivered directly to sites
- Coordinated trash pick-up services and sanitary services
- Safety and security
 - SPPD added patrols
 - New Block by Block Ambassadors program (starts operations today)
- Continue site by site approach – Area Operational Plans

DANGERS AMID COLDER TEMPERATURES



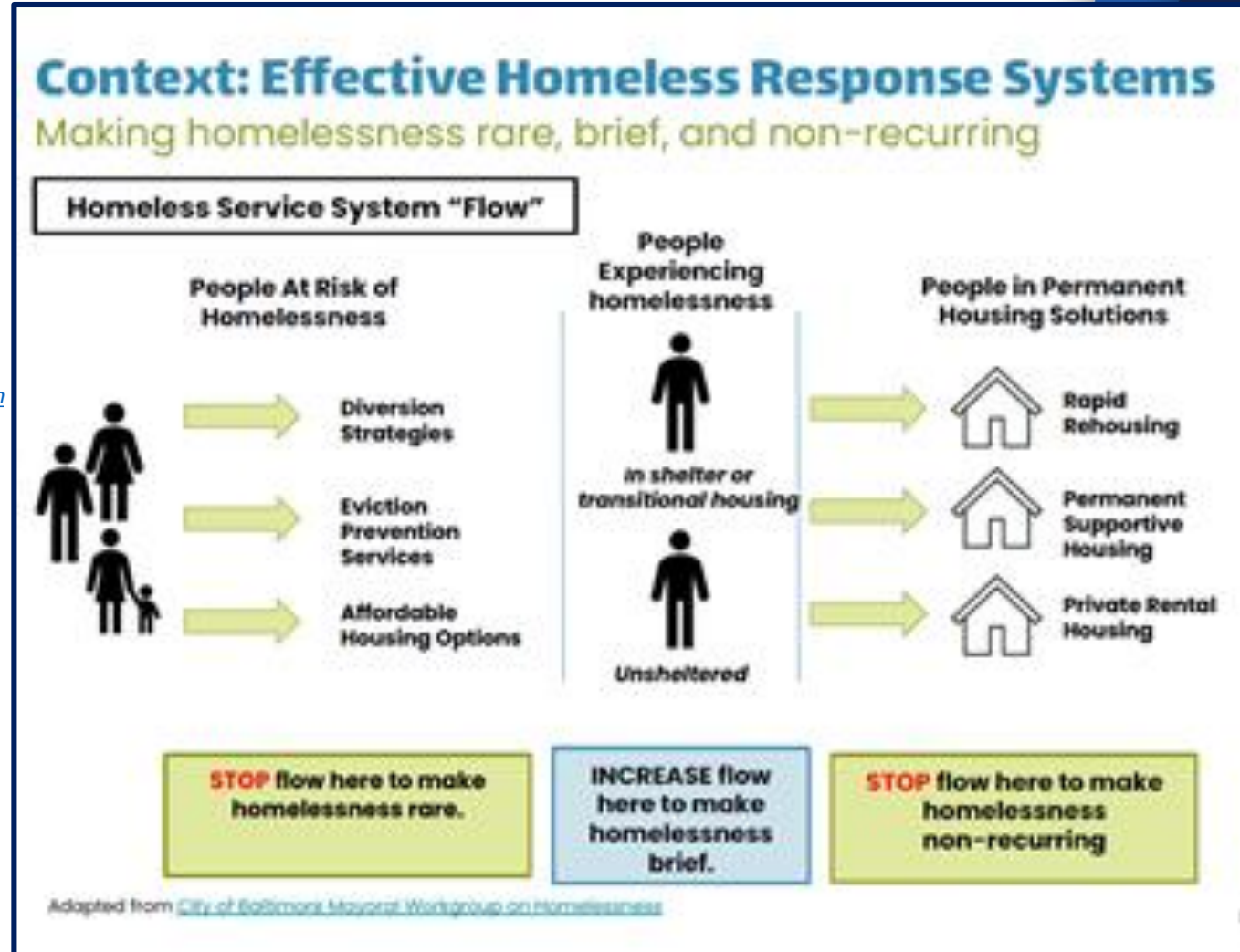
Kellogg Mall, December 18 - courtesy Saint Paul Fire Department.

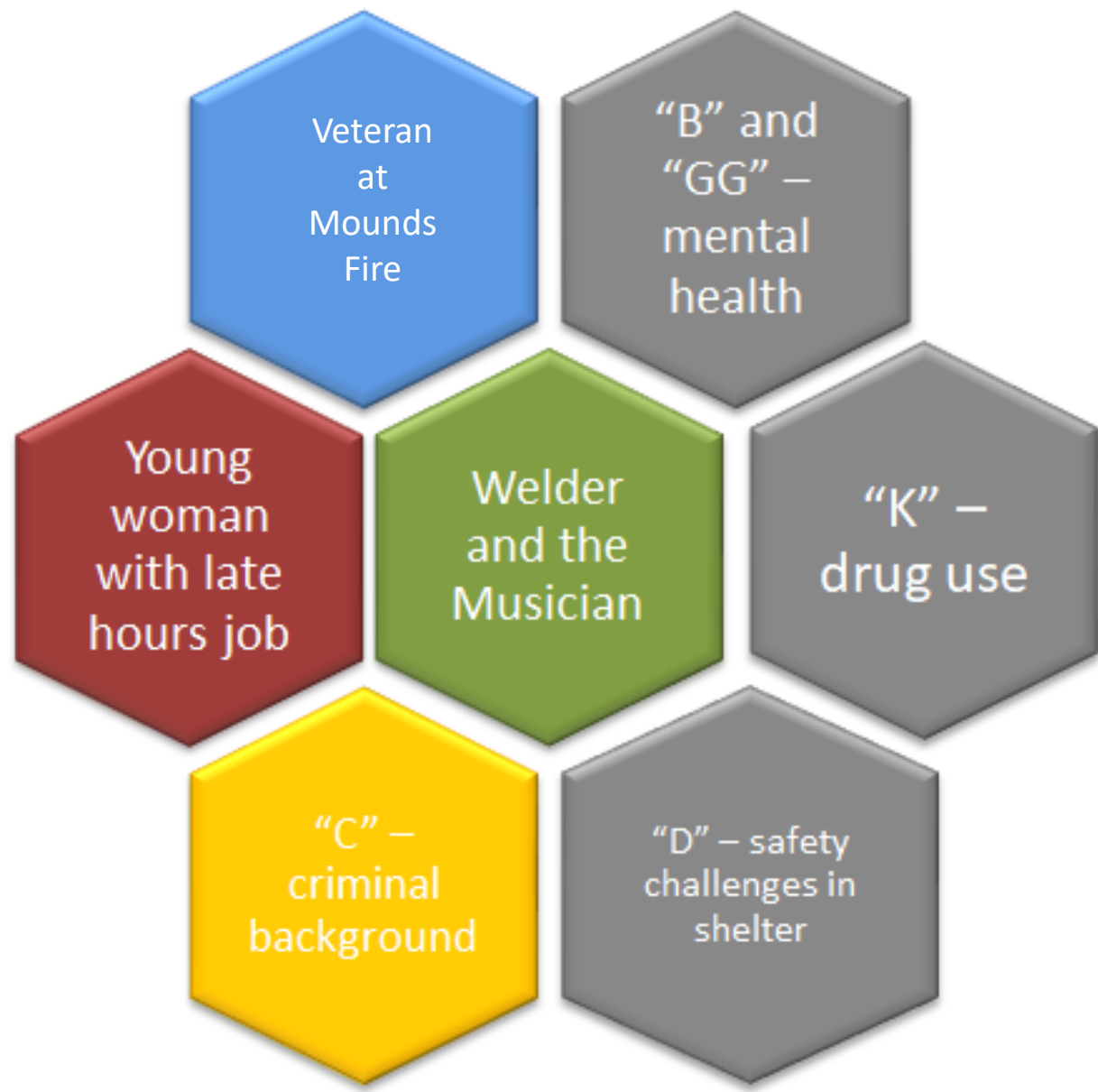
Ramsey County Compost Site, December 7 - courtesy Ramsey County.



Excerpt from Minnesota Housing Partnership <https://www.mhponline.org/publications/housing-continuum>

Heading Home Ramsey (HHR) is the Continuum of Care for Ramsey County, a community-wide partnership committed to the goal of ending homelessness in the cities and neighborhoods of Ramsey County. HHR is a coalition of social service providers, housing providers, philanthropic partners, business, community, government and resident. HHR is responsible for long term strategic planning and managing on-going work being done to reduce and end homelessness in Ramsey County.





THANK YOU