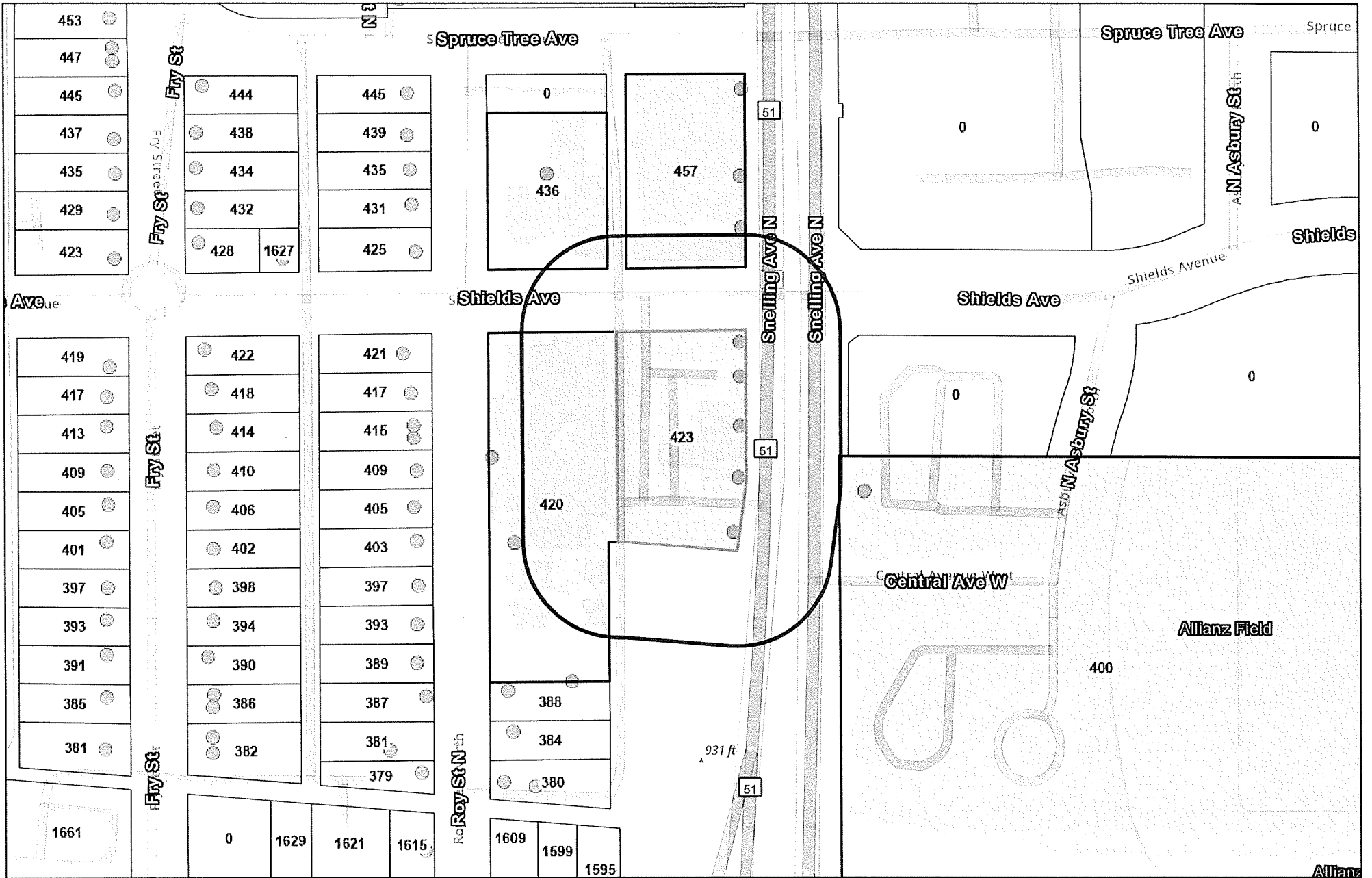
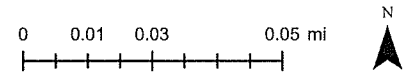


	A	B	C	D
1	Current Resident	436 ROY ST N	SAINT PAUL MN 55104-3808	332923410011
2	Current Resident	423 SNELLING AVE N	SAINT PAUL MN 55104-3801	332923410132
3	Current Resident	420 ROY ST N	SAINT PAUL MN 55104-3804	332923410131
4	Current Resident	400 SNELLING AVE N	SAINT PAUL MN 55104-3822	342923320023
5	Current Resident	457 SNELLING AVE N	SAINT PAUL MN 55104-3802	332923410133



Esri Community Maps Contributors, County of Ramsey, Metropolitan Council, MetroGIS, © OpenStreetMap, Microsoft, Esri, TomTom, Garmin, SafeGraph, GeoTechnologies, Inc, METI/NASA, USGS, EPA, NPS, US



The Geographic Information System (GIS) Data to which this notice is attached are made available pursuant to the Minnesota Government Data Practices Act (Minnesota Statutes Chapter 13). The GIS Data are provided to you "AS IS" and without any warranty as to their performance, merchantability, or fitness for any particular purpose. The GIS Data were developed by the City of Saint Paul for its own internal business purposes. The City of Saint Paul does not represent or warrant that the GIS Data or the data documentation are error-free, complete, current, or accurate. You are responsible for any consequences resulting from your use of the GIS Data or your reliance on the GIS Data. You should consult the data documentation for this particular GIS Data to determine the limitations of the GIS Data and the precision with which the GIS Data may depict distance, direction, location, or other geographic features. If you transmit or provide the GIS Data (or any portion of it) to another user, the GIS Data must include a copy of this disclaimer.