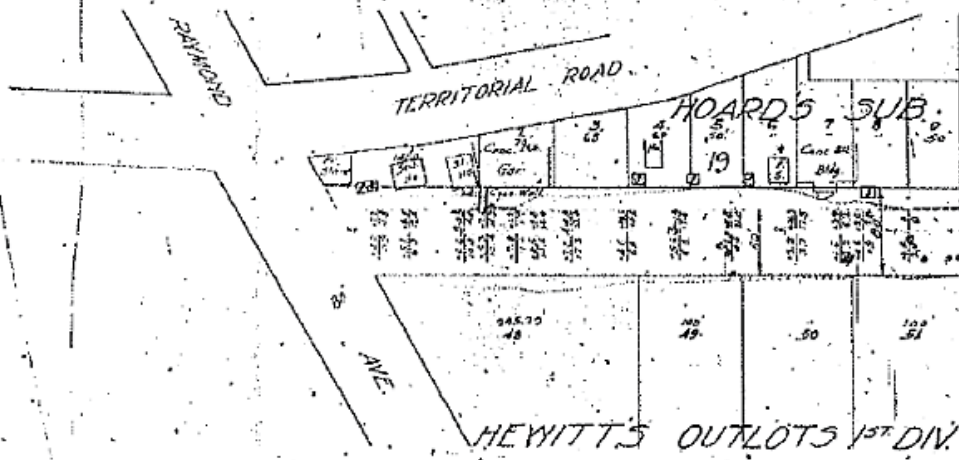


81212 July 2, 1930  
35195  
50  
J. W. H. H. H.  
J. W. H. H. H.

1539 1550  
Scale 1" = 100'



Charles St.  
Johnston  
On 2/16/30

802212

**FINAL ORDERS IN CONDEMNATION PROCEEDINGS.**

C. F. No. 85135—By J. H. McDonald—  
in the matter of condemning and tak-  
ing an easement in the land neces-  
sary for slopes, cuts and fills, in the  
grading of Charles St. from Raymond  
Ave. to Carlton St. under Prelimin-  
ary Order 83204, approved Oct. 19,  
1929; Intermediary Order 84888, ap-  
proved April 18, 1930.

A public hearing having been had  
upon the above improvement upon due  
notice, and the Council having heard  
all persons, objections and recommen-  
dations relative thereto, and having  
fully considered the same; therefore,  
be it

Resolved, By the Council of the City  
of St. Paul that the precise nature, ex-  
tent and kind of improvement to be  
made by the said City is

Condemning and taking an easement  
in the land necessary for slopes, cuts  
and fills, in the grading of Charles St.  
from Raymond Ave. to Carlton St., and  
the Council hereby orders said im-  
provement to be made.

Resolved Further, That the follow-  
ing land, lands or easements therein be  
and the same are hereby ordered to be  
taken, appropriated and condemned for  
the purpose of making the said im-  
provements, viz:

Grading Charles St. from Raymond  
Ave. to Carlton St.

Resolved Further, That the Commis-  
sioner of Public Works be and he here-  
by instructed and directed to prepare  
plans and specifications for said im-  
provement, and the proper city officials  
are hereby authorized and directed to  
proceed with the making of said im-  
provement in accordance therewith.

Adopted by the Council May 8, 1930.

Approved May 8, 1930.

(May 10-1930)

*H. A. [unclear]*  
30.9.10  
*J. H. McDonald*  
*J. Fitzgerald*  
*City of St. Paul*