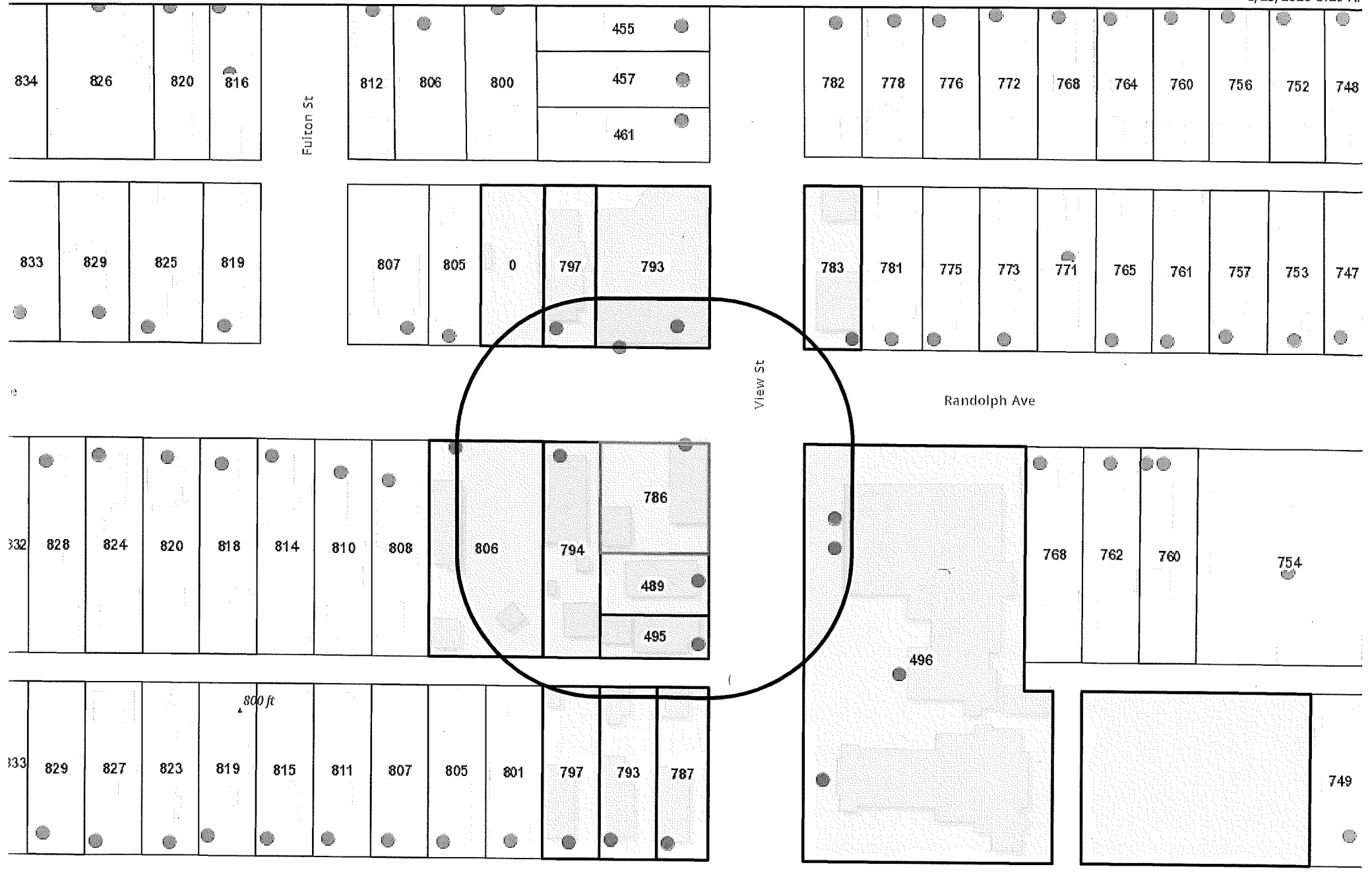
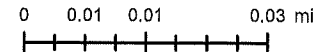


	A	B	C	D
1	ETHAN R MEYER	797 JUNO AVE	SAINT PAUL MN 55102-3821	112823420046
2	MICHAEL E OOMS	489 VIEW ST	SAINT PAUL MN 55102-3823	112823420010
3	RED SAUCE LLC	2800 NIAGARA LN	PLYMOUTH MN 55447-4850	112823420009
4	MARK BRADY	793 JUNO AVE	SAINT PAUL MN 55102-3821	112823420047
5	JEFFREY A WUBBEN	787 JUNO AVE	ST PAUL MN 55105-3821	112823420048
6	BYRON P HAWKE	495 VIEW ST	ST PAUL MN 55102-3823	112823420008
7	RANDY L TESSMER	794 RANDOLPH AVE	SAINT PAUL MN 55102-3416	112823420011
8	LEE B ERICKSON	806 RANDOLPH AVE	ST PAUL MN 55102-3416	112823420211
9	KER VUE	671 JENKS AVE	ST PAUL MN 55106-3111	112823130146
10	THOMAS J WANG	4055 PUMICE LN	EAGAN MN 55122-2956	112823130144
11	THOMAS J WANG	4055 PUMICE LN	EAGAN MN 55122-2956	112823130145
12	NADJA M HOGG	783 RANDOLPH AVE	ST PAUL MN 55102-3413	112823130125
13	CHURCH OF ST JAMES	650 PALACE AVE	SAINT PAUL MN 55102-3540	112823420213



**Saint Paul Minnesota**  
*The most livable city in America*

Sources: Esri, Airbus DS, USGS, NGA, NASA, CGIAR, N Robinson, NCEAS, NLS, OS, NMA, Geodatastyrelsen, Rijkswaterstaat, GSA, Geoland, FEMA, Intermap and the GIS user community, City of Saint Paul - Public Works



The Geographic Information System (GIS) Data to which this notice is attached are made available pursuant to the Minnesota Government Data Practices Act (Minnesota Statutes Chapter 13). The GIS Data are provided to you "AS IS" and without any warranty as to their performance, merchantability, or fitness for any particular purpose. The GIS Data were developed by the City of Saint Paul for its own internal business purposes. The City of Saint Paul does not represent or warrant that the GIS Data or the data documentation are error-free, complete, current, or accurate. You are responsible for any consequences resulting from your use of the GIS Data or your reliance on the GIS Data. You should consult the data documentation for his particular GIS Data to determine the limitations of the GIS Data and the precision with which the GIS Data may depict distance, direction, location, or other geographic features. If you transmit or provide the GIS Data (or any portion of it) to