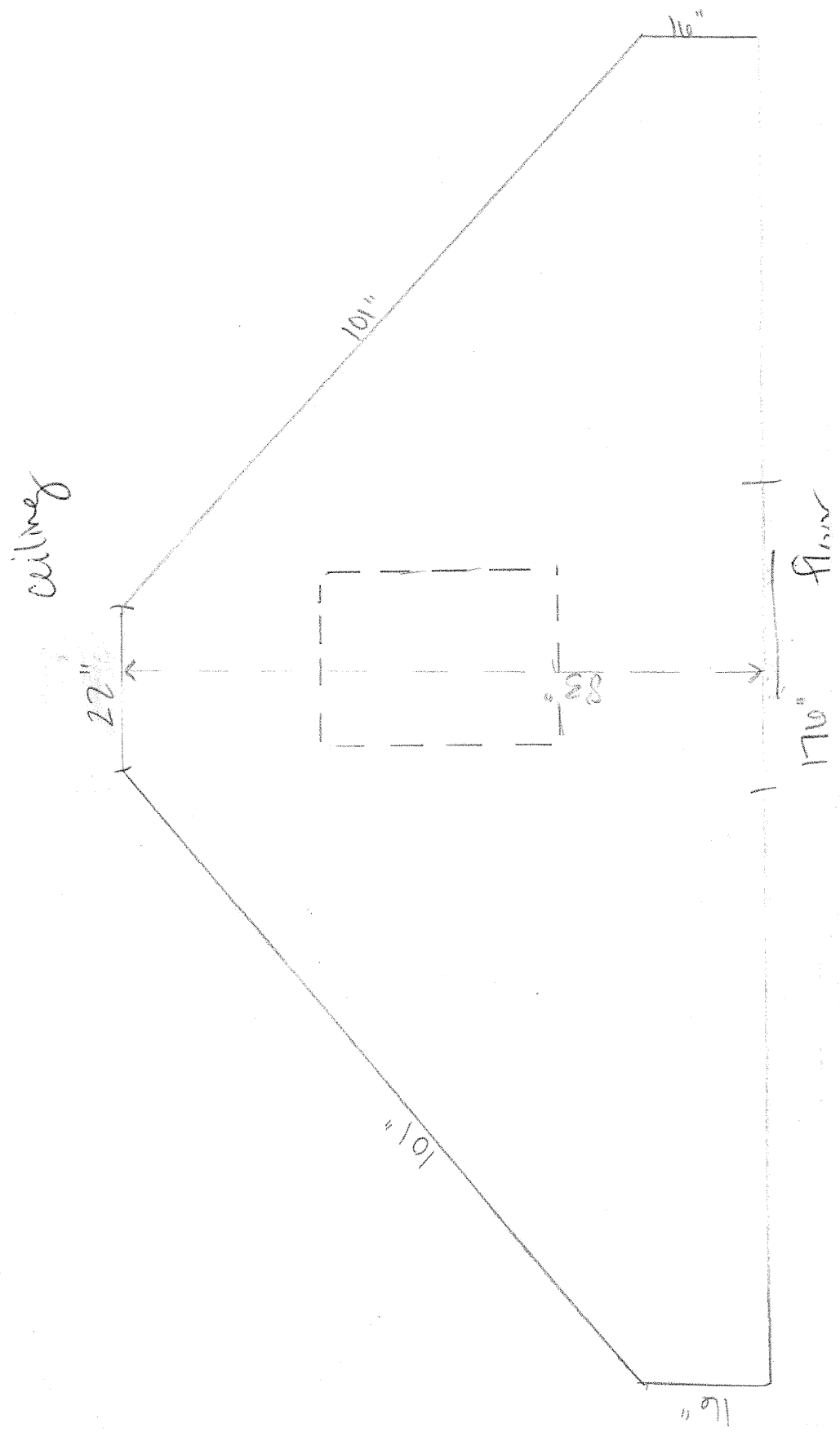


1217 Woodbridge

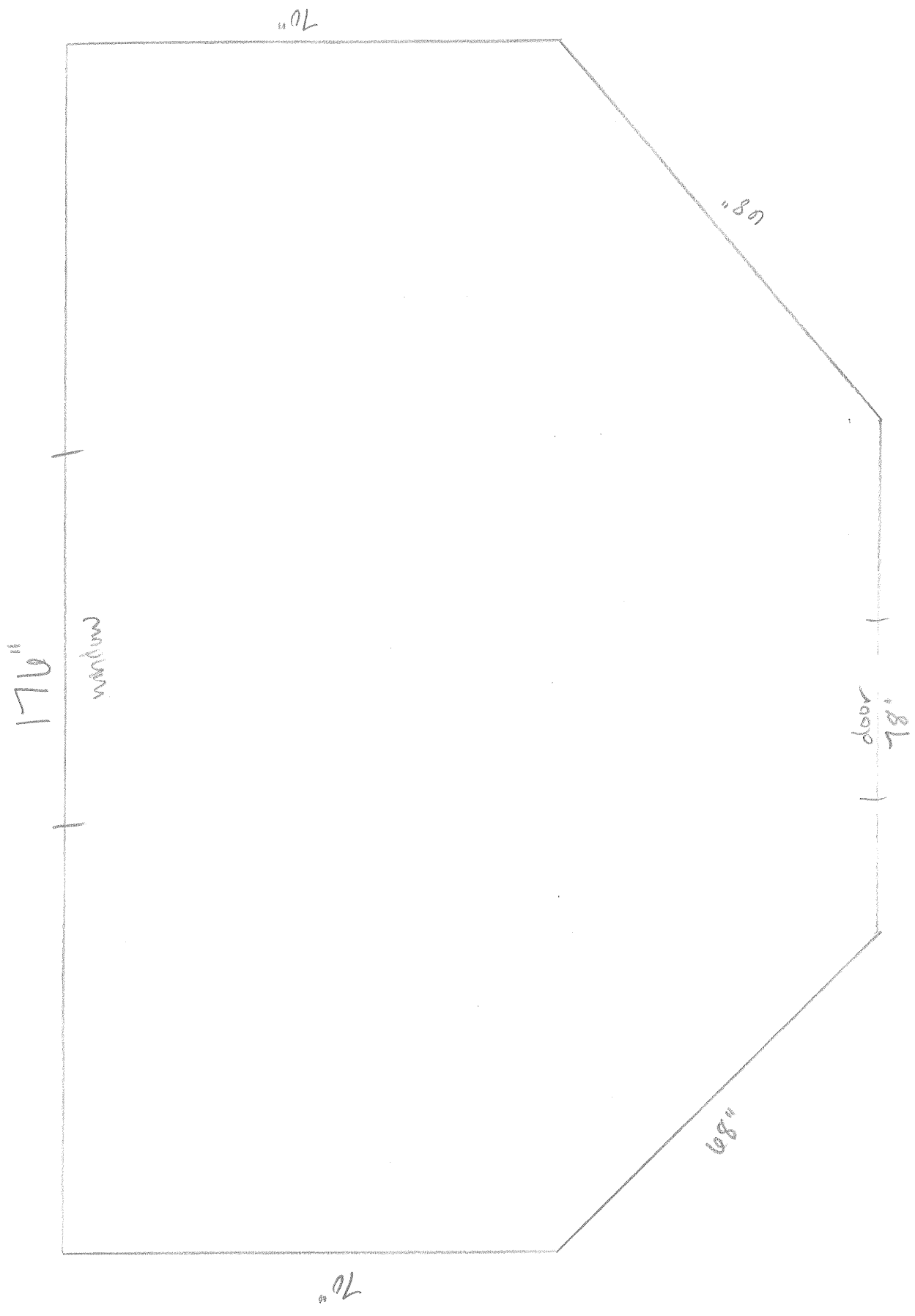
1217 woodbridge st.

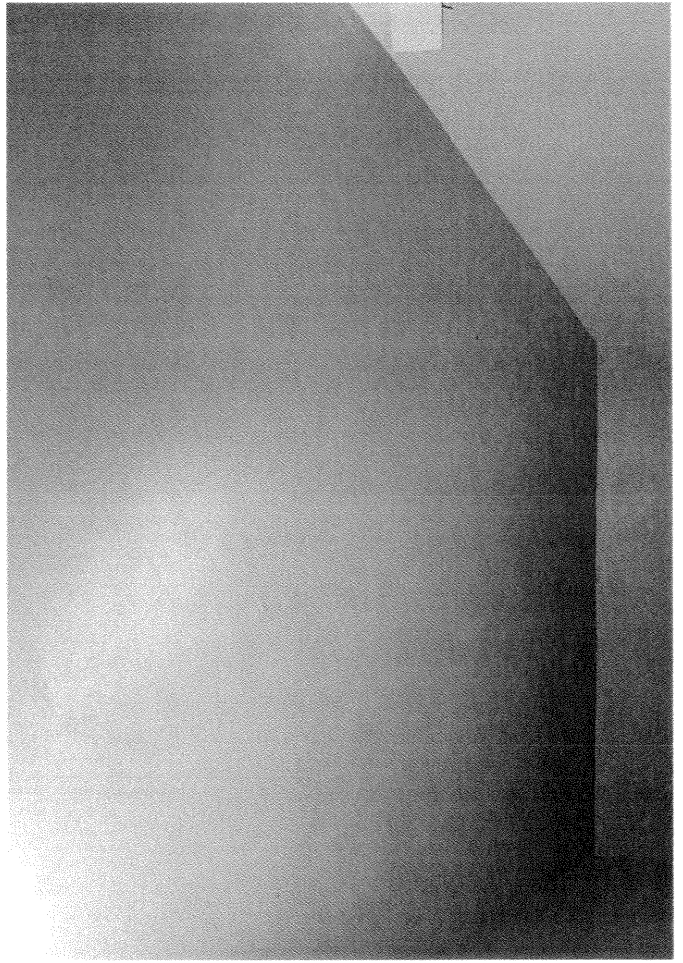
Bedroom 2 (wall/ceiling)



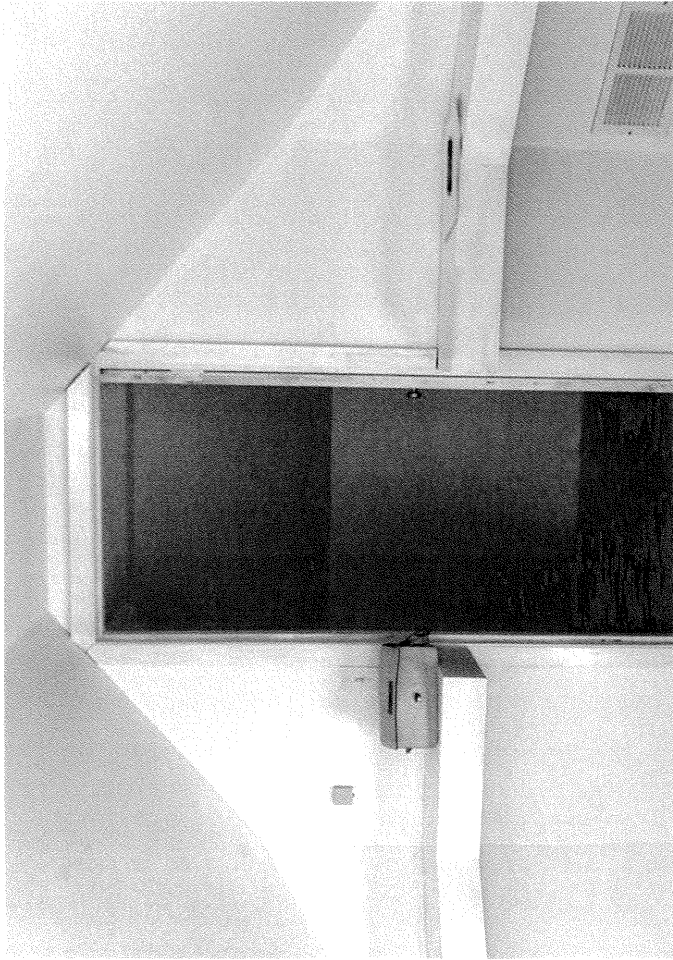
1217 Woodlawn St.

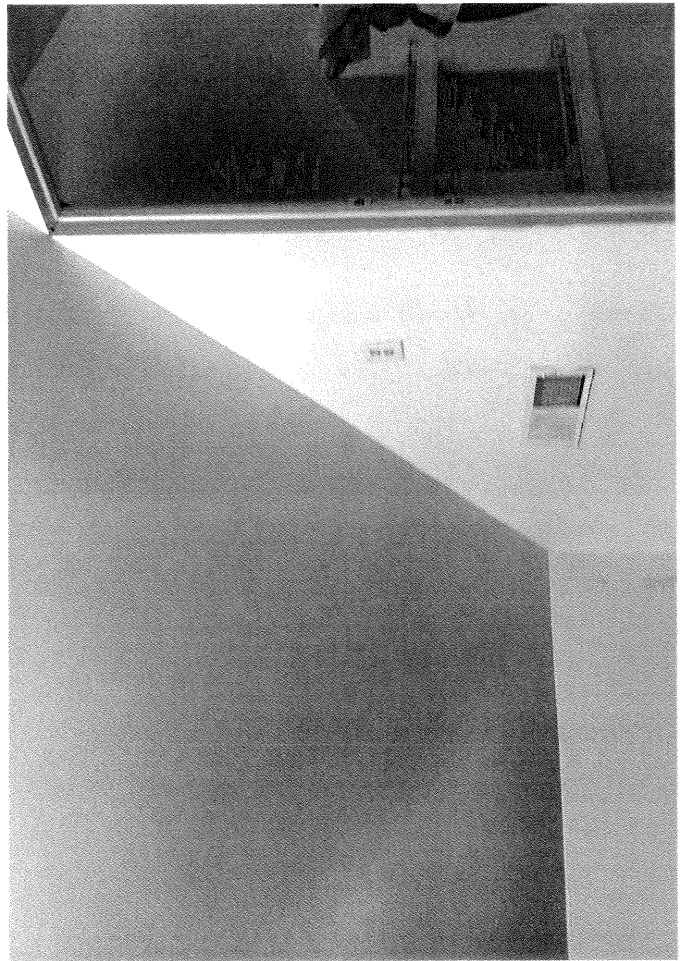
Bedroom 2 (Floor)



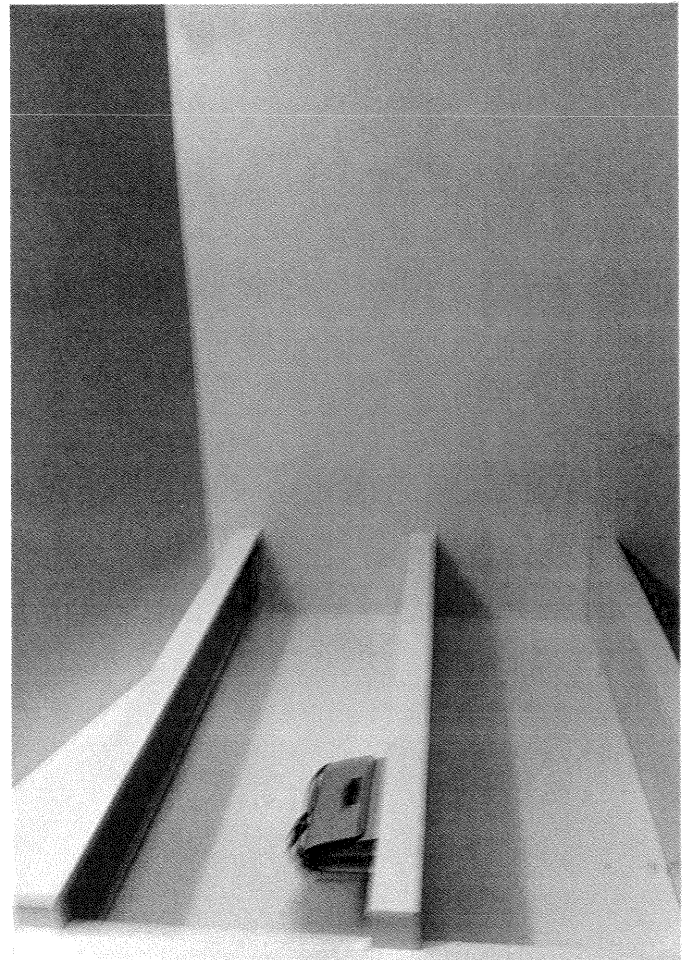


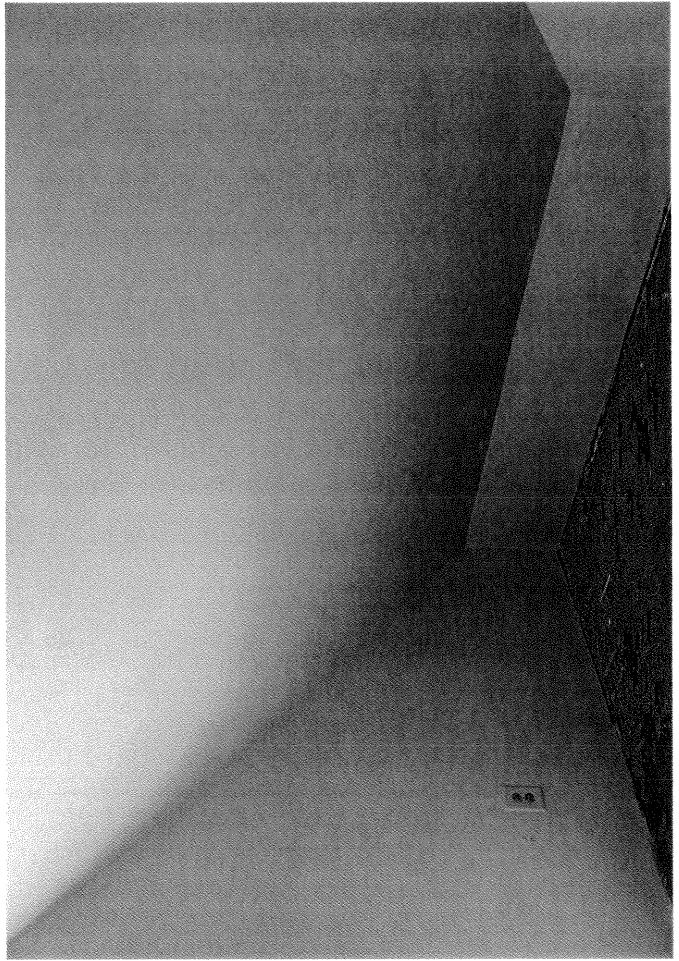
K#2





Handwritten text: a checkmark, a hash symbol (#), and a downward-pointing arrow.

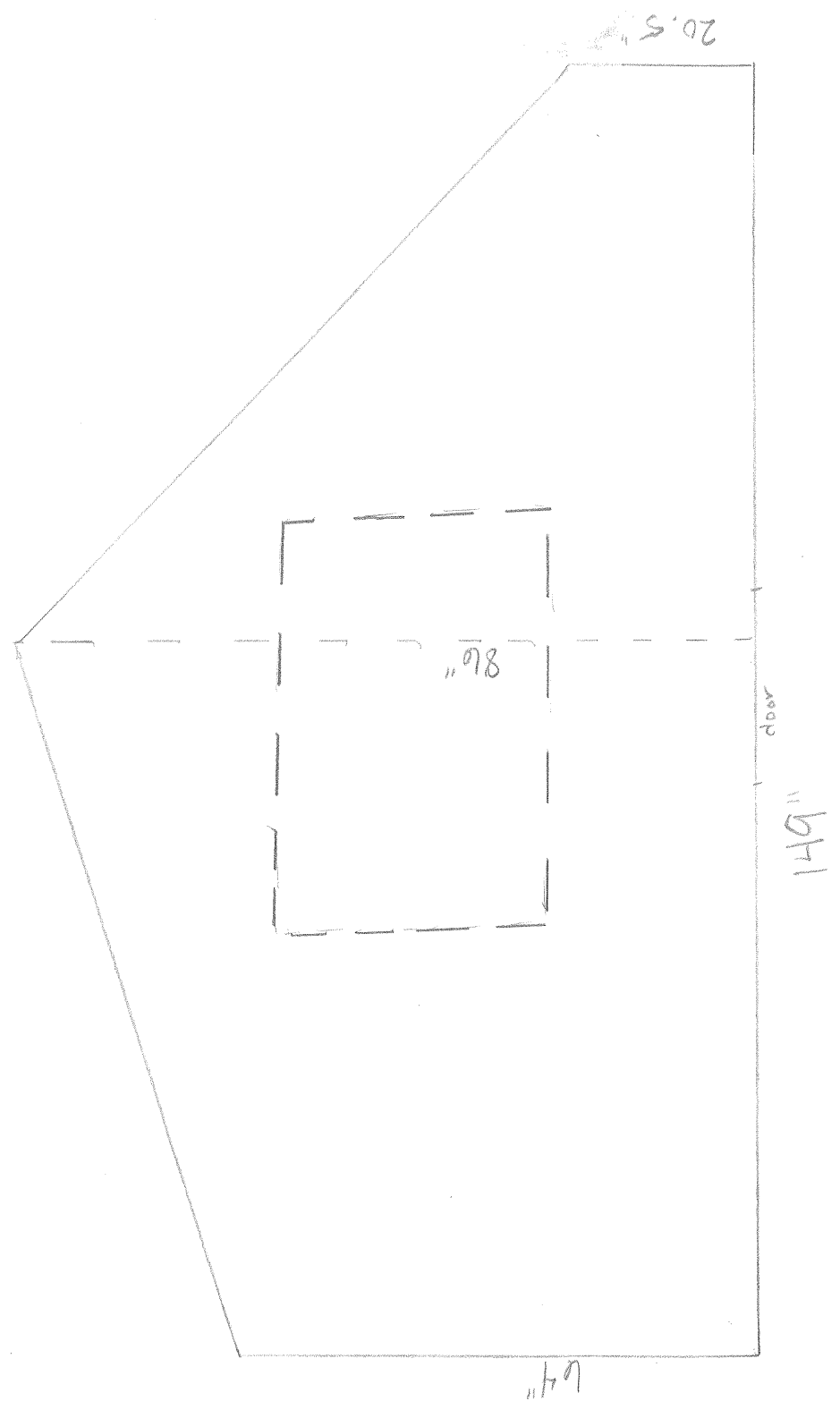




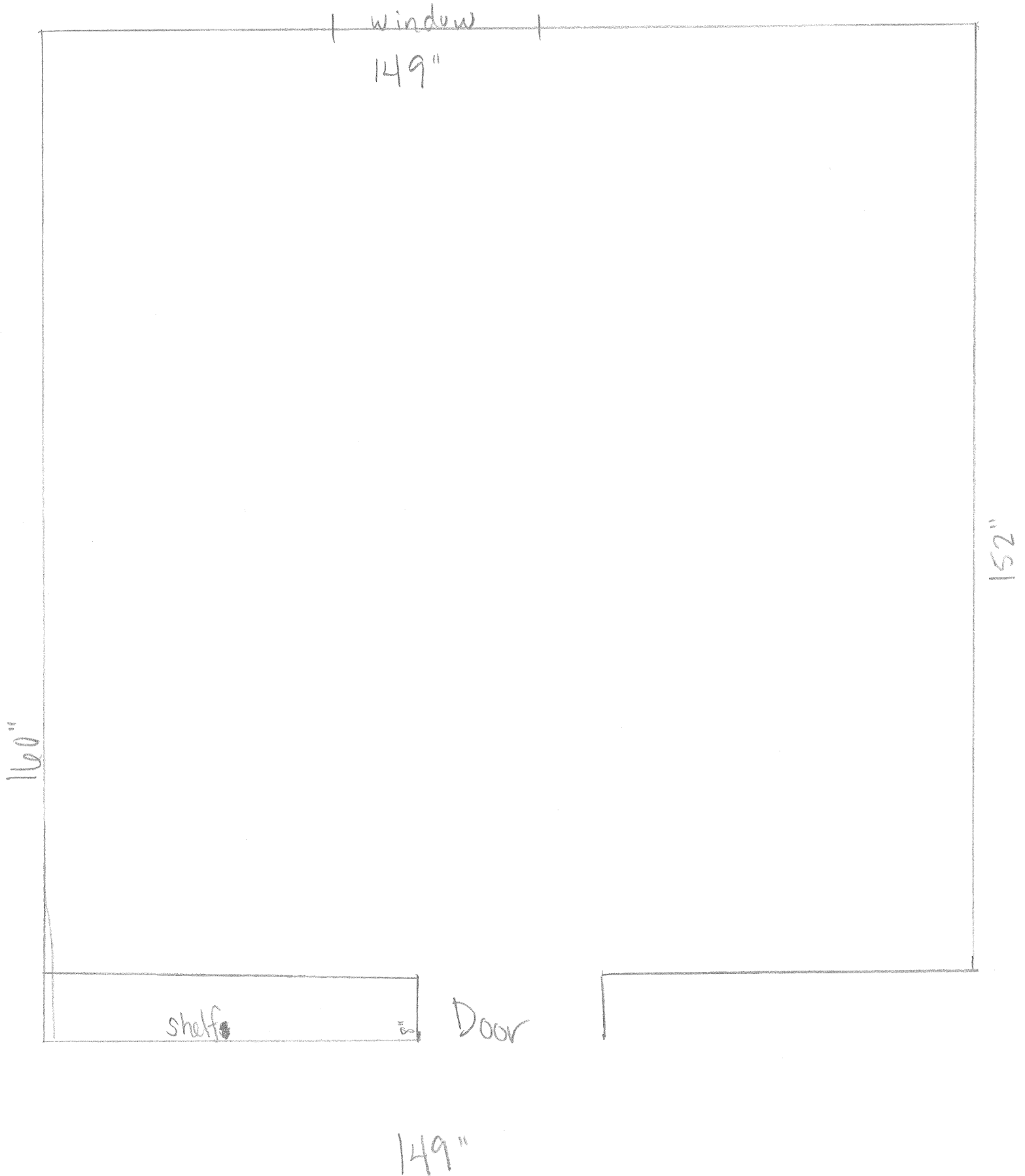
8
K#



Bedroom 1 (wall/ceiling)

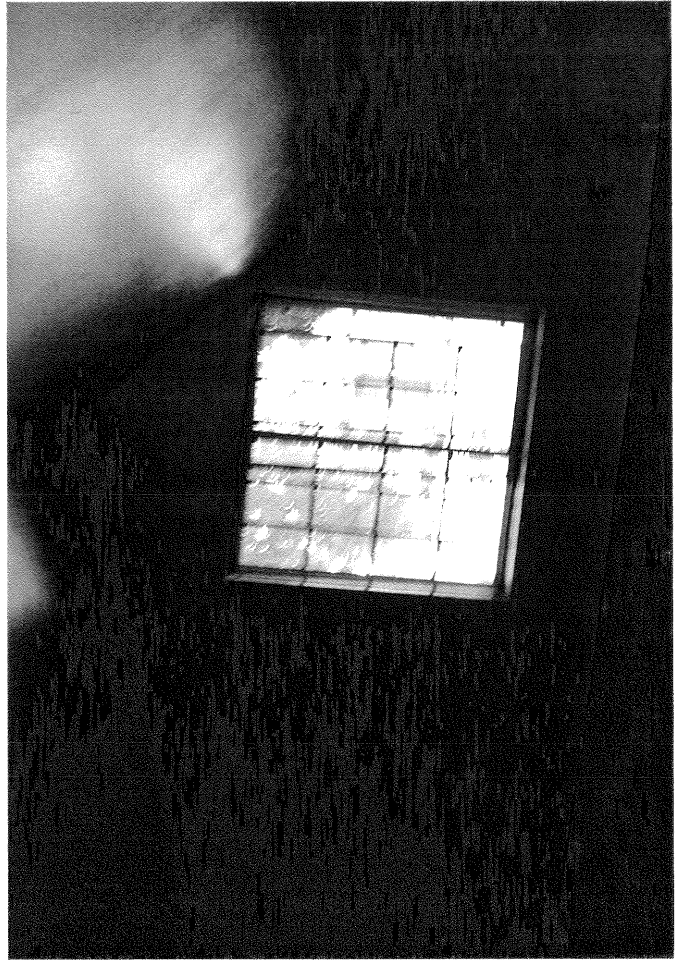


Bedroom 1 (floor)

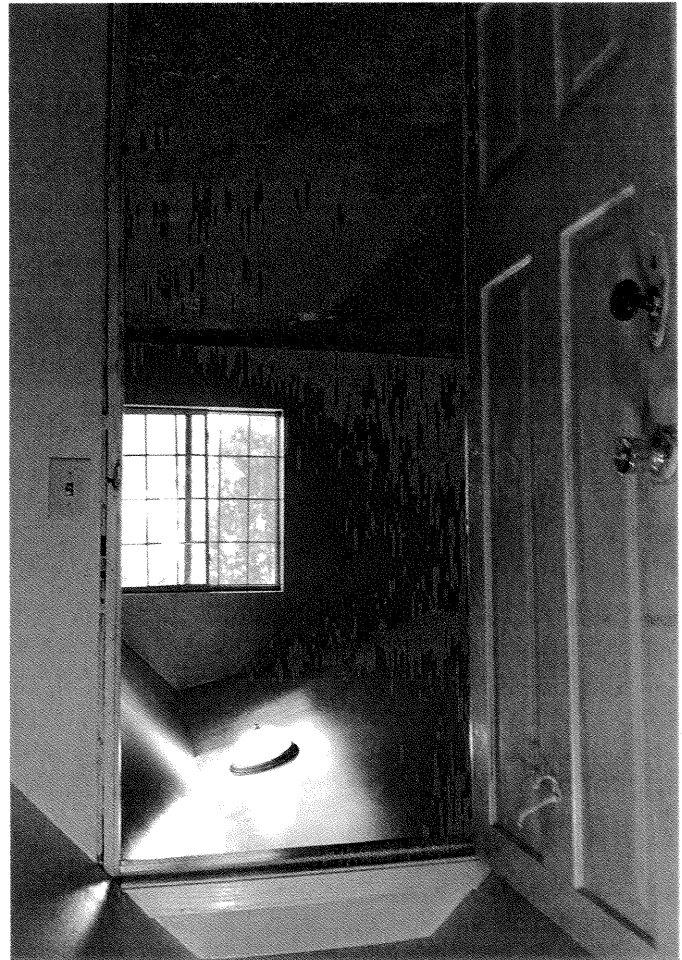
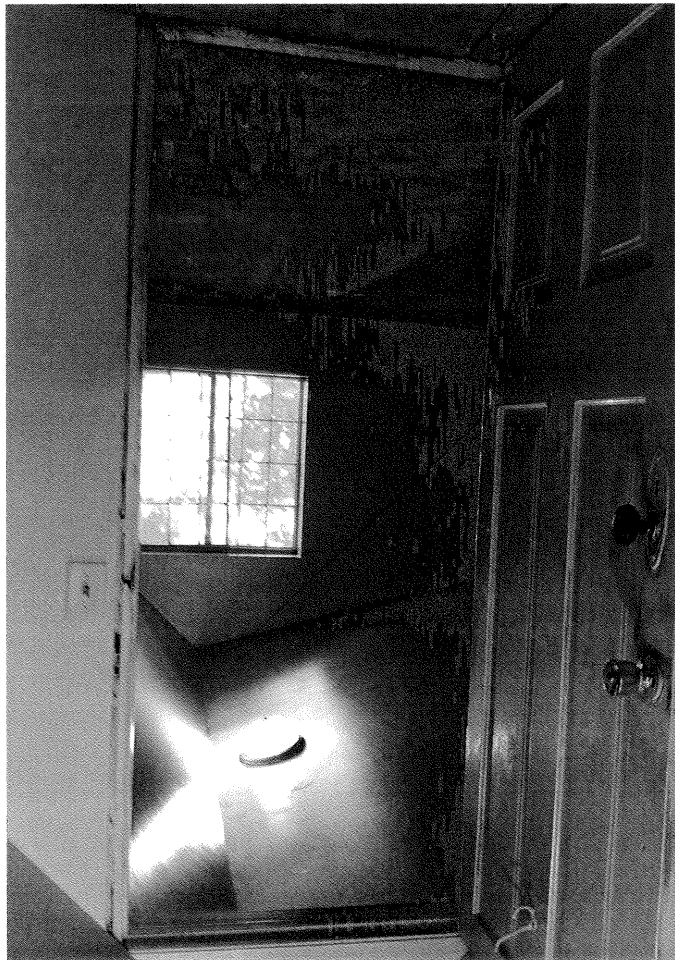


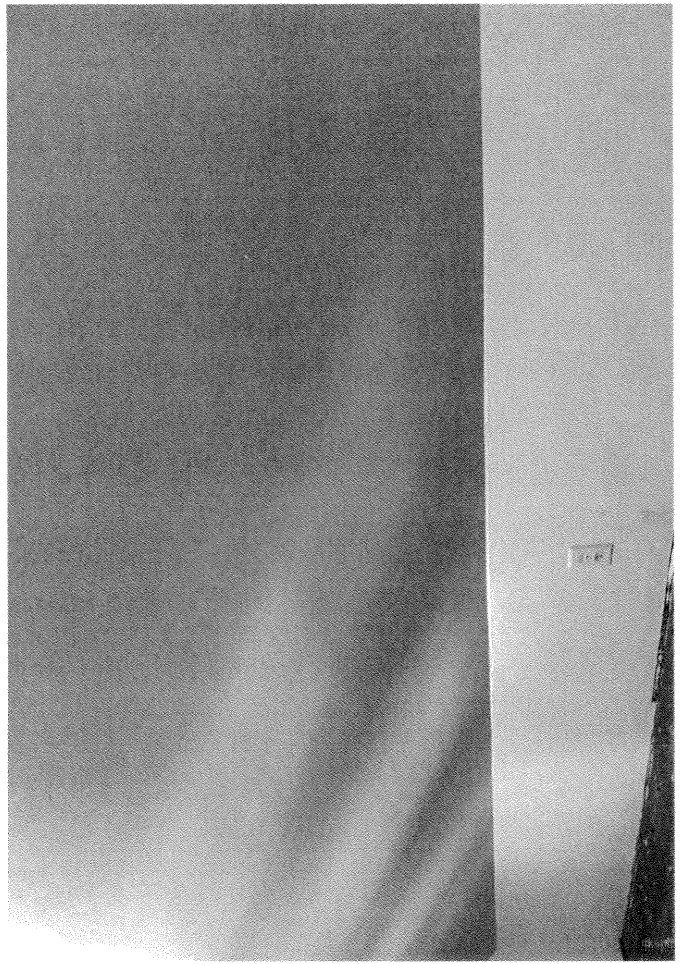
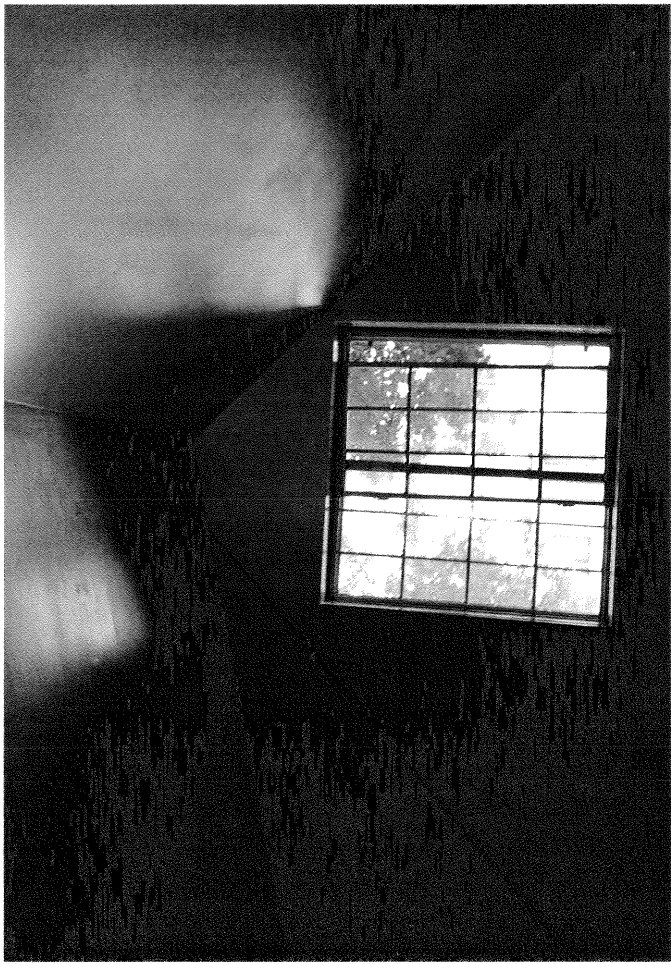
1

R



R# 1





R#1

