



Façade on Snelling Avenue

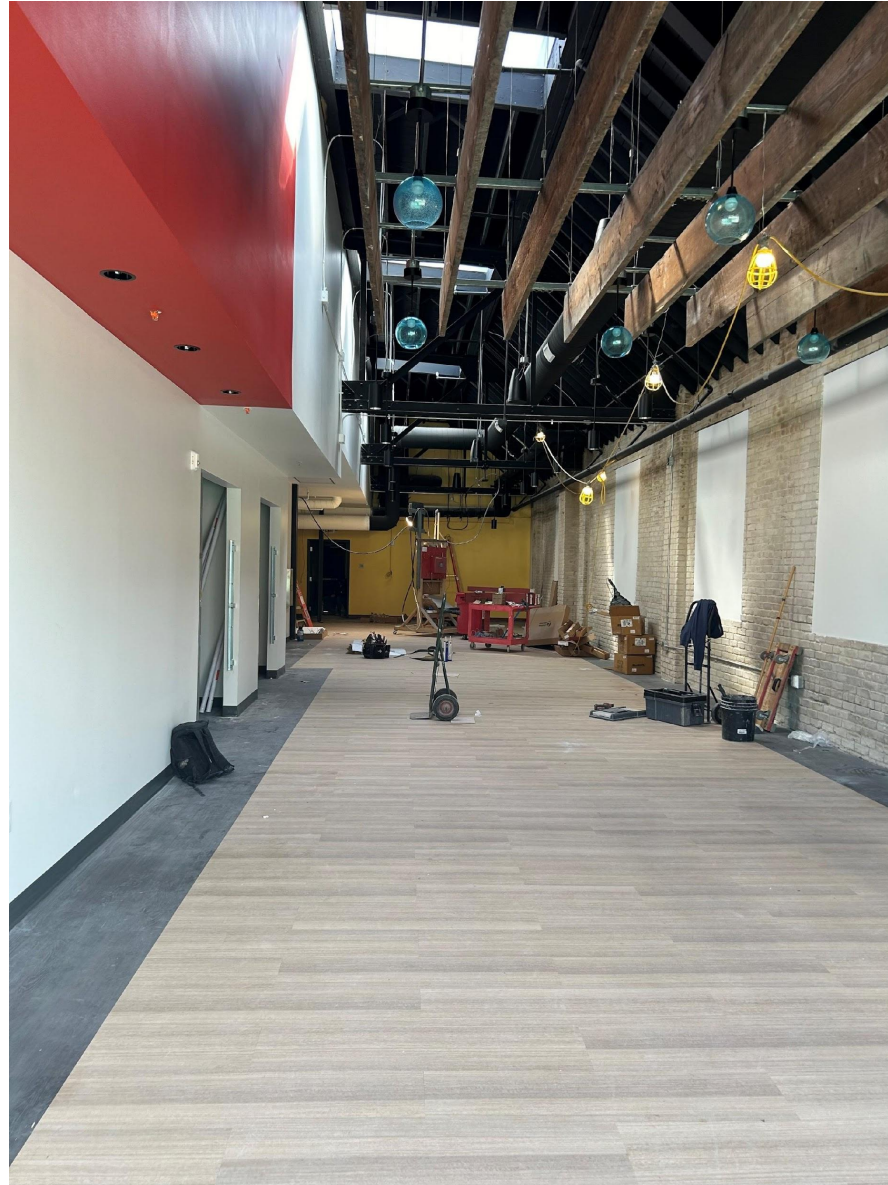
South facade



Front of grocery looking at Snelling Ave



Looking through  
grocery cashier right,  
carts left micro retail  
spaces open into the  
grocery space on the left



North wall of grocery –  
deli counter



Looking east through the exit from the garage



SW corner  
office  
Upper level



Bathrooms – 4 total &  
identical





LULA elevator





**Looking from reception area to training room**





SW corner office

Corner  
office





**Private office at left, one of four cubicle  
“pods”**





Break room on alley side of building