

Date: June 21, 2022
File #: 19 - 047234
Folder Name: 933 PAYNE AVE
PIN: 292922420044



Date: June 21, 2022
File #: 19 - 047234
Folder Name: 933 PAYNE AVE
PIN: 292922420044



Date: June 21, 2022
File #: 19 - 047234
Folder Name: 933 PAYNE AVE
PIN: 292922420044



Date: June 21, 2022
File #: 19 - 047234
Folder Name: 933 PAYNE AVE
PIN: 292922420044



Date: June 21, 2022
File #: 19 - 047234
Folder Name: 933 PAYNE AVE
PIN: 292922420044



Date: June 21, 2022
File #: 19 - 047234
Folder Name: 933 PAYNE AVE
PIN: 292922420044



Date: June 21, 2022
File #: 19 - 047234
Folder Name: 933 PAYNE AVE
PIN: 292922420044



Date: June 21, 2022
File #: 19 - 047234
Folder Name: 933 PAYNE AVE
PIN: 292922420044



Date: June 21, 2022
File #: 19 - 047234
Folder Name: 933 PAYNE AVE
PIN: 292922420044



Date: June 21, 2022
File #: 19 - 047234
Folder Name: 933 PAYNE AVE
PIN: 292922420044



Date: June 21, 2022
File #: 19 - 047234
Folder Name: 933 PAYNE AVE
PIN: 292922420044



Date: June 21, 2022
File #: 19 - 047234
Folder Name: 933 PAYNE AVE
PIN: 292922420044



Date: June 21, 2022
File #: 19 - 047234
Folder Name: 933 PAYNE AVE
PIN: 292922420044



Date: June 21, 2022
File #: 19 - 047234
Folder Name: 933 PAYNE AVE
PIN: 292922420044



Date: June 21, 2022
File #: 19 - 047234
Folder Name: 933 PAYNE AVE
PIN: 292922420044



Date: June 21, 2022
File #: 19 - 047234
Folder Name: 933 PAYNE AVE
PIN: 292922420044



Date: June 21, 2022
File #: 19 - 047234
Folder Name: 933 PAYNE AVE
PIN: 292922420044



Date: June 21, 2022
File #: 19 - 047234
Folder Name: 933 PAYNE AVE
PIN: 292922420044



Date: June 21, 2022
File #: 19 - 047234
Folder Name: 933 PAYNE AVE
PIN: 292922420044



Date: June 21, 2022
File #: 19 - 047234
Folder Name: 933 PAYNE AVE
PIN: 292922420044



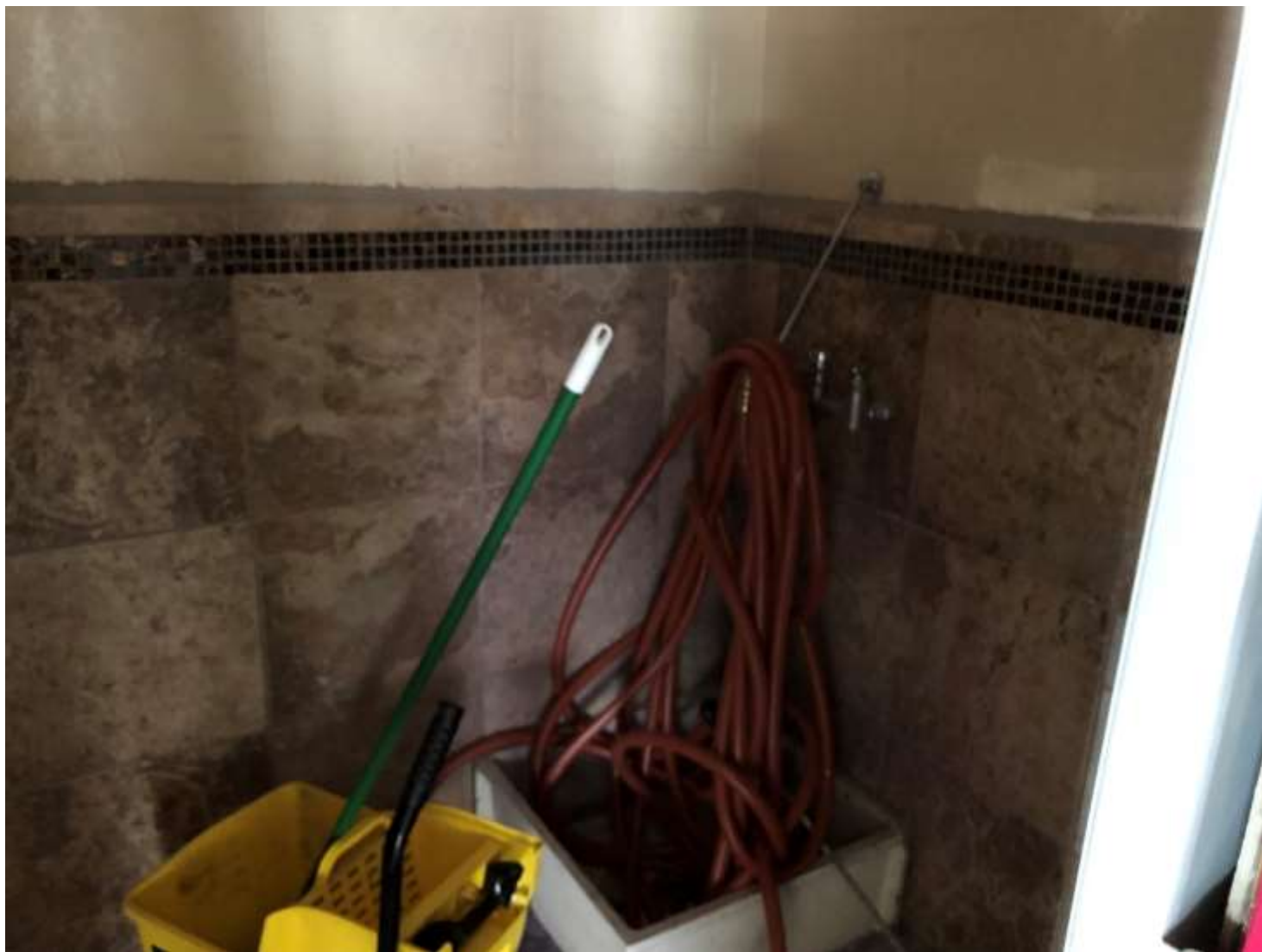
Date: June 21, 2022
File #: 19 - 047234
Folder Name: 933 PAYNE AVE
PIN: 292922420044



Date: June 21, 2022
File #: 19 - 047234
Folder Name: 933 PAYNE AVE
PIN: 292922420044



Date: June 21, 2022
File #: 19 - 047234
Folder Name: 933 PAYNE AVE
PIN: 292922420044



Date: June 21, 2022
File #: 19 - 047234
Folder Name: 933 PAYNE AVE
PIN: 292922420044



Date: June 21, 2022
File #: 19 - 047234
Folder Name: 933 PAYNE AVE
PIN: 292922420044



Date: June 21, 2022
File #: 19 - 047234
Folder Name: 933 PAYNE AVE
PIN: 292922420044



Date: June 21, 2022
File #: 19 - 047234
Folder Name: 933 PAYNE AVE
PIN: 292922420044



Date: June 21, 2022
File #: 19 - 047234
Folder Name: 933 PAYNE AVE
PIN: 292922420044



Date: June 21, 2022
File #: 19 - 047234
Folder Name: 933 PAYNE AVE
PIN: 292922420044



Date: June 21, 2022
File #: 19 - 047234
Folder Name: 933 PAYNE AVE
PIN: 2929222420044



Date: June 21, 2022
File #: 19 - 047234
Folder Name: 933 PAYNE AVE
PIN: 292922420044



Date: June 21, 2022
File #: 19 - 047234
Folder Name: 933 PAYNE AVE
PIN: 292922420044



Date: June 21, 2022
File #: 19 - 047234
Folder Name: 933 PAYNE AVE
PIN: 292922420044



Date: June 21, 2022
File #: 19 - 047234
Folder Name: 933 PAYNE AVE
PIN: 292922420044



Date: June 21, 2022
File #: 19 - 047234
Folder Name: 933 PAYNE AVE
PIN: 292922420044

Product Manufacturing Company
 2500 Delwood Avenue
 Raleigh, NC 27603-2502 Phone: 800-808-8328
 Model Number: **DFG200AFRNN14A1**
 Serial Number: **0917093914-4867**

ANSI Z83.8-2009
CSA 2.6-2009

APPROVALS

LISTED UNDER FILE NO. 1575-1000
 CERTIFIED TO CANADA CODE # NO. 100
 APPROVED FOR USE IN MASSACHUSETTS
 APPROVED FOR USE IN CALIFORNIA
 APPROVED BY CITY OF NEW YORK (NYS-DOCS-10-1)

GENERAL INFORMATION
 GAS: NATURAL GAS
 VENT TYPE: NATURAL
 VENTING SYSTEM: 20-100 °F
 LISTED INPUTS: I / I
 LISTED OUTPUTS: 115 BTU/hr
 LISTED INPUTS: 200000 BTU/hr
 LISTED OUTPUTS: 160000 BTU/hr
 LISTED INPUTS: 23
 LISTED OUTPUTS: 26

INSTALLATION INSTRUCTIONS
 1. READ INSTRUCTIONS CAREFULLY BEFORE INSTALLATION.
 2. THIS UNIT MUST BE INSTALLED IN ACCORDANCE WITH ALL APPLICABLE CODES AND REGULATIONS.
 3. THIS UNIT MUST BE INSTALLED IN ACCORDANCE WITH THE MANUFACTURER'S INSTRUCTIONS.
 4. THIS UNIT MUST BE INSTALLED IN ACCORDANCE WITH THE NATIONAL FIRE PROTECTION ASSOCIATION (NFPA) 54 (2012) STANDARD FOR GAS INSTALLATION IN BUILDINGS.
 5. THIS UNIT MUST BE INSTALLED IN ACCORDANCE WITH THE INTERNATIONAL MECHANICAL ELECTRICAL PLUMBING (IMPE) CODE.
 6. THIS UNIT MUST BE INSTALLED IN ACCORDANCE WITH THE NATIONAL ELECTRICAL CODE (NEC) AND THE NATIONAL FIRE PROTECTION ASSOCIATION (NFPA) 70 (2017) NATIONAL ELECTRICAL CODE.
 7. THIS UNIT MUST BE INSTALLED IN ACCORDANCE WITH THE INTERNATIONAL MECHANICAL ELECTRICAL PLUMBING (IMPE) CODE.
 8. THIS UNIT MUST BE INSTALLED IN ACCORDANCE WITH THE NATIONAL FIRE PROTECTION ASSOCIATION (NFPA) 54 (2012) STANDARD FOR GAS INSTALLATION IN BUILDINGS.
 9. THIS UNIT MUST BE INSTALLED IN ACCORDANCE WITH THE INTERNATIONAL MECHANICAL ELECTRICAL PLUMBING (IMPE) CODE.
 10. THIS UNIT MUST BE INSTALLED IN ACCORDANCE WITH THE NATIONAL ELECTRICAL CODE (NEC) AND THE NATIONAL FIRE PROTECTION ASSOCIATION (NFPA) 70 (2017) NATIONAL ELECTRICAL CODE.

COMMON REPLACEMENT PARTS
 5H080681 Comb. Gas Valve
 5H080689 Ignition Control
 5H72892-1 Wiring Diagram
 5H71966-1 Ctrl Transformer
 3K37454-1 Pilot Replace Kit
 3H36508-1 Heat Exch. Kit
 3H35628-4 Burner Kit
 5H71790-1 Optional TDR

WARNING
 DO NOT ATTEMPT TO REPAIR OR SERVICER THIS UNIT UNLESS YOU ARE A QUALIFIED SERVICE TECHNICIAN.
 IF YOU ARE NOT A QUALIFIED SERVICE TECHNICIAN, CONTACT YOUR LOCAL GAS SUPPLIER OR SERVICE CONTRACTOR FOR ASSISTANCE.
 IF YOU ARE A QUALIFIED SERVICE TECHNICIAN, CONTACT YOUR LOCAL GAS SUPPLIER OR SERVICE CONTRACTOR FOR ASSISTANCE.
 IF YOU ARE A QUALIFIED SERVICE TECHNICIAN, CONTACT YOUR LOCAL GAS SUPPLIER OR SERVICE CONTRACTOR FOR ASSISTANCE.

INSTALLATION INSTRUCTIONS
 1. READ INSTRUCTIONS CAREFULLY BEFORE INSTALLATION.
 2. THIS UNIT MUST BE INSTALLED IN ACCORDANCE WITH ALL APPLICABLE CODES AND REGULATIONS.
 3. THIS UNIT MUST BE INSTALLED IN ACCORDANCE WITH THE MANUFACTURER'S INSTRUCTIONS.
 4. THIS UNIT MUST BE INSTALLED IN ACCORDANCE WITH THE NATIONAL FIRE PROTECTION ASSOCIATION (NFPA) 54 (2012) STANDARD FOR GAS INSTALLATION IN BUILDINGS.
 5. THIS UNIT MUST BE INSTALLED IN ACCORDANCE WITH THE INTERNATIONAL MECHANICAL ELECTRICAL PLUMBING (IMPE) CODE.
 6. THIS UNIT MUST BE INSTALLED IN ACCORDANCE WITH THE NATIONAL ELECTRICAL CODE (NEC) AND THE NATIONAL FIRE PROTECTION ASSOCIATION (NFPA) 70 (2017) NATIONAL ELECTRICAL CODE.
 7. THIS UNIT MUST BE INSTALLED IN ACCORDANCE WITH THE INTERNATIONAL MECHANICAL ELECTRICAL PLUMBING (IMPE) CODE.
 8. THIS UNIT MUST BE INSTALLED IN ACCORDANCE WITH THE NATIONAL FIRE PROTECTION ASSOCIATION (NFPA) 54 (2012) STANDARD FOR GAS INSTALLATION IN BUILDINGS.
 9. THIS UNIT MUST BE INSTALLED IN ACCORDANCE WITH THE INTERNATIONAL MECHANICAL ELECTRICAL PLUMBING (IMPE) CODE.
 10. THIS UNIT MUST BE INSTALLED IN ACCORDANCE WITH THE NATIONAL ELECTRICAL CODE (NEC) AND THE NATIONAL FIRE PROTECTION ASSOCIATION (NFPA) 70 (2017) NATIONAL ELECTRICAL CODE.

LIGHTING INSTRUCTIONS
 FOR UNITS WITH REMOVABLE PILOT
 1. SET THERMOSTAT TO LOWEST SETTING. MOVE GAS CONTROL KNOB TO OFF AND WAIT 5 MINUTES.
 2. MOVE GAS CONTROL KNOB TO PILOT FOR UNITS WITH REMOVABLE PILOT AND PRESSURE RELEASE VALVE. LIGHT PILOT AND HOLD FOR 1 MINUTE AFTER PILOT IS LIT.
 3. MOVE GAS CONTROL KNOB TO OFF AND WAIT 5 MINUTES.
 4. SET THERMOSTAT TO DESIRED SETTING.
 5. TURN OFF POWER & CLOSE ALL GAS VALVES.

FOR UNITS WITH COMBING PILOT
 1. SET THERMOSTAT TO LOWEST SETTING. MOVE GAS CONTROL KNOB TO OFF AND WAIT 5 MINUTES.
 2. MOVE GAS CONTROL KNOB TO PILOT FOR UNITS WITH COMBING PILOT AND PRESSURE RELEASE VALVE. LIGHT PILOT AND HOLD FOR 1 MINUTE AFTER PILOT IS LIT.
 3. MOVE GAS CONTROL KNOB TO OFF AND WAIT 5 MINUTES.
 4. SET THERMOSTAT TO DESIRED SETTING.
 5. TURN OFF POWER & CLOSE ALL GAS VALVES.

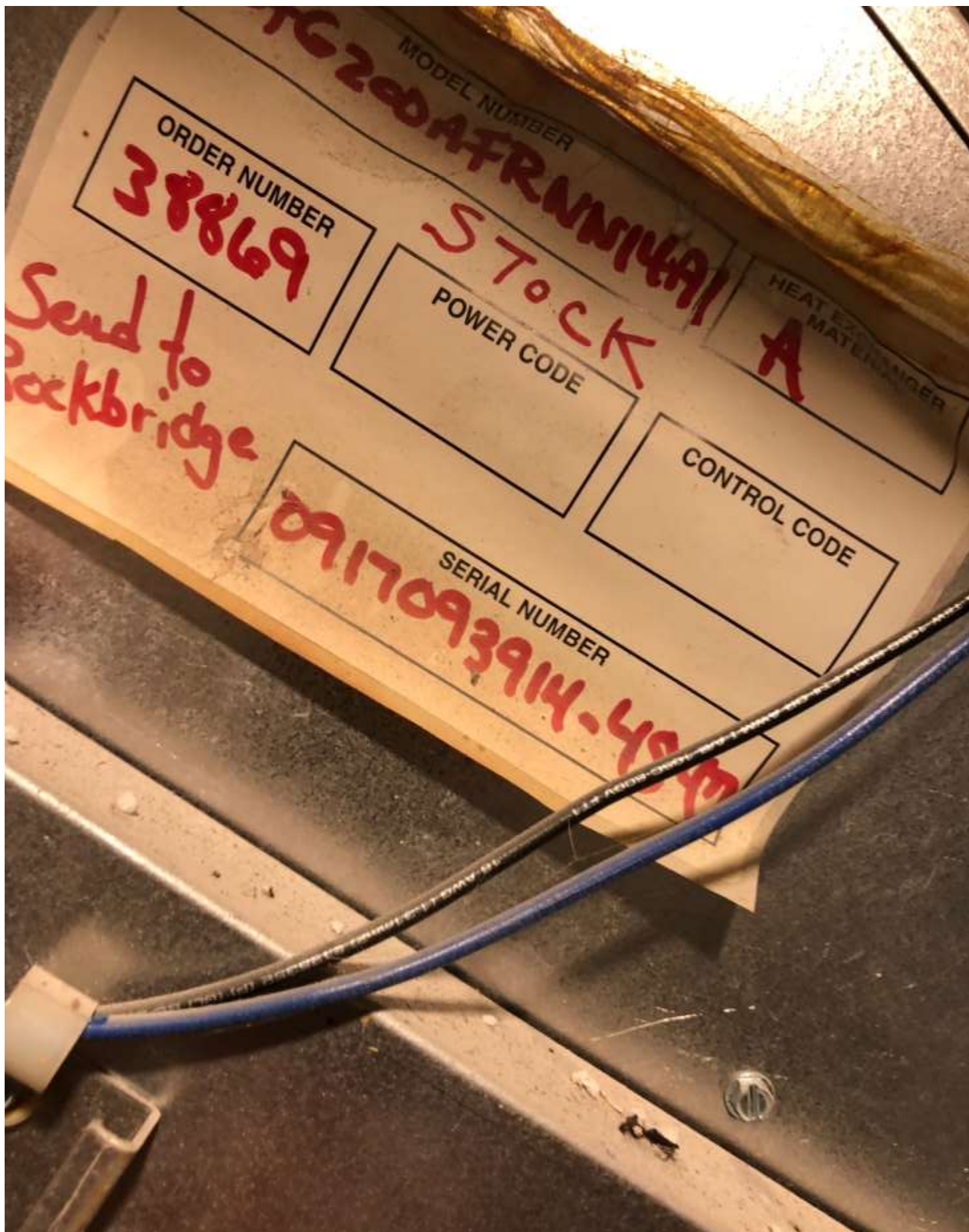
FOR UNITS WITH REMOVABLE PILOT
 1. SET THERMOSTAT TO LOWEST SETTING. MOVE GAS CONTROL KNOB TO OFF AND WAIT 5 MINUTES.
 2. MOVE GAS CONTROL KNOB TO PILOT FOR UNITS WITH REMOVABLE PILOT AND PRESSURE RELEASE VALVE. LIGHT PILOT AND HOLD FOR 1 MINUTE AFTER PILOT IS LIT.
 3. MOVE GAS CONTROL KNOB TO OFF AND WAIT 5 MINUTES.
 4. SET THERMOSTAT TO DESIRED SETTING.
 5. TURN OFF POWER & CLOSE ALL GAS VALVES.

FOR UNITS WITH COMBING PILOT
 1. SET THERMOSTAT TO LOWEST SETTING. MOVE GAS CONTROL KNOB TO OFF AND WAIT 5 MINUTES.
 2. MOVE GAS CONTROL KNOB TO PILOT FOR UNITS WITH COMBING PILOT AND PRESSURE RELEASE VALVE. LIGHT PILOT AND HOLD FOR 1 MINUTE AFTER PILOT IS LIT.
 3. MOVE GAS CONTROL KNOB TO OFF AND WAIT 5 MINUTES.
 4. SET THERMOSTAT TO DESIRED SETTING.
 5. TURN OFF POWER & CLOSE ALL GAS VALVES.

FOR UNITS WITH REMOVABLE PILOT
 1. SET THERMOSTAT TO LOWEST SETTING. MOVE GAS CONTROL KNOB TO OFF AND WAIT 5 MINUTES.
 2. MOVE GAS CONTROL KNOB TO PILOT FOR UNITS WITH REMOVABLE PILOT AND PRESSURE RELEASE VALVE. LIGHT PILOT AND HOLD FOR 1 MINUTE AFTER PILOT IS LIT.
 3. MOVE GAS CONTROL KNOB TO OFF AND WAIT 5 MINUTES.
 4. SET THERMOSTAT TO DESIRED SETTING.
 5. TURN OFF POWER & CLOSE ALL GAS VALVES.

FOR UNITS WITH COMBING PILOT
 1. SET THERMOSTAT TO LOWEST SETTING. MOVE GAS CONTROL KNOB TO OFF AND WAIT 5 MINUTES.
 2. MOVE GAS CONTROL KNOB TO PILOT FOR UNITS WITH COMBING PILOT AND PRESSURE RELEASE VALVE. LIGHT PILOT AND HOLD FOR 1 MINUTE AFTER PILOT IS LIT.
 3. MOVE GAS CONTROL KNOB TO OFF AND WAIT 5 MINUTES.
 4. SET THERMOSTAT TO DESIRED SETTING.
 5. TURN OFF POWER & CLOSE ALL GAS VALVES.

Date: June 21, 2022
File #: 19 - 047234
Folder Name: 933 PAYNE AVE
PIN: 292922420044



ORDER NUMBER
38869

MODEL NUMBER
FRANNI 200A

POWER CODE
STOCK

HEAT EXCHANGER
A

CONTROL CODE

SERIAL NUMBER
0917093914-487

Send to
Rockbridge

Date: June 21, 2022
 File #: 19 - 047234
 Folder Name: 933 PAYNE AVE
 PIN: 292922420044



Carrier
A United Technologies Company

MODEL 40RUAA12A3A6A0A0A0
SERIAL 4314U06054



Carrier
A United Technologies Company

MODEL 40RUAA12A3A6A0A0A0
SERIAL 4314U06054

Compressors		Refrigerant/System		Test Pressure Gage	
Qty	Volts AC PH Hz	FLA LRA	lbs kg	R	41DA
1					
2					

Fan Motors		Volts AC PH Hz		FLA HP KW		
Indoor	1	208/230	3	60	10.7/10.6	3.7 2.76
	OR	460	3	60	5.3	3.7 2.76

Power Supply	Volts AC PH Hz		Max Volts		Min Volts		MCA*		MOCF**	
	208/230	460	3	60	253	187	14/14	7	20/20	15
CONTROL PANEL SCCR: 5KA RMS SYMMETRICAL VOLTAGE: 230 MAX										

*MCA = Min Circuit Amps (Fuse or HACR Bkr.)
 **MOCF = Max Over Current Protective Device Amps

Test with External Static
 2.40 in H₂O
 0.52 MPa

NOT Suitable for Outdoor Use

Charge System per Installation Instructions

Test Pressure Gage
 HI 650 PSI (4482 kPa)

MODEL SERIAL






Carrier
A United Technologies Company

MODEL 40RUAA12A3A6A0A0A0
SERIAL 4314U06054

Compressors		Refrigerant/System		Test Pressure Gage	
Qty	Volts AC PH Hz	FLA LRA	lbs kg	R	41DA
1					
2					

Fan Motors		Volts AC PH Hz		FLA HP KW		
Indoor	1	208/230	3	60	10.7/10.6	3.7 2.76
	OR	460	3	60	5.3	3.7 2.76

Power Supply	Volts AC PH Hz		Max Volts		Min Volts		MCA*		MOCF**	
	208/230	460	3	60	253	187	14/14	7	20/20	15
CONTROL PANEL SCCR: 5KA RMS SYMMETRICAL VOLTAGE: 230 MAX										

*MCA = Min Circuit Amps (Fuse or HACR Bkr.)
 **MOCF = Max Over Current Protective Device Amps

Test with External Static
 2.40 in H₂O
 0.52 MPa

NOT Suitable for Outdoor Use

Charge System per Installation Instructions

Test Pressure Gage
 HI 650 PSI (4482 kPa)

MODEL SERIAL




Part Number
8844343

Designed in U.S.A.
 Assembled in Mexico

Date: June 21, 2022
 File #: 19 - 047234
 Folder Name: 933 PAYNE AVE
 PIN: 292922420044

MODÈLE 40RUAA12A3A6A0A0A0

NUMÉRO DE SÉRIE 4314U06054



MODÈLE 40RUAA12A3A6A0A0A0

NUMÉRO DE SÉRIE 4314U06054



(CHARGÉ EN USINE)

RÉF. / SYSTÈME

Pression de mano. de Test

ALT PH HZ BLA LRA

lbs kg R-

HI 650 PSI (4482 kPA)

Qté	Volts	ALT	PH	Hz	FLA	HP	KW
1	208/230	3	60	10.7/10.6	3.7	2.76	
OR	460	3	60	5.3	3.7	2.76	

C	PH	Hz	Max		MCA*	MOCF*
			Volts	Volts		
	3	60	253	187	14/14	20/20
	3	60	506	414	7	15

COMMANDE SCCR:5 KA RMS SYMÉTRIQUE TENSION 230 MAX

Min. du Circuit (Fusible ou disjoncteur HACR)
 e Protection de surtension Max.

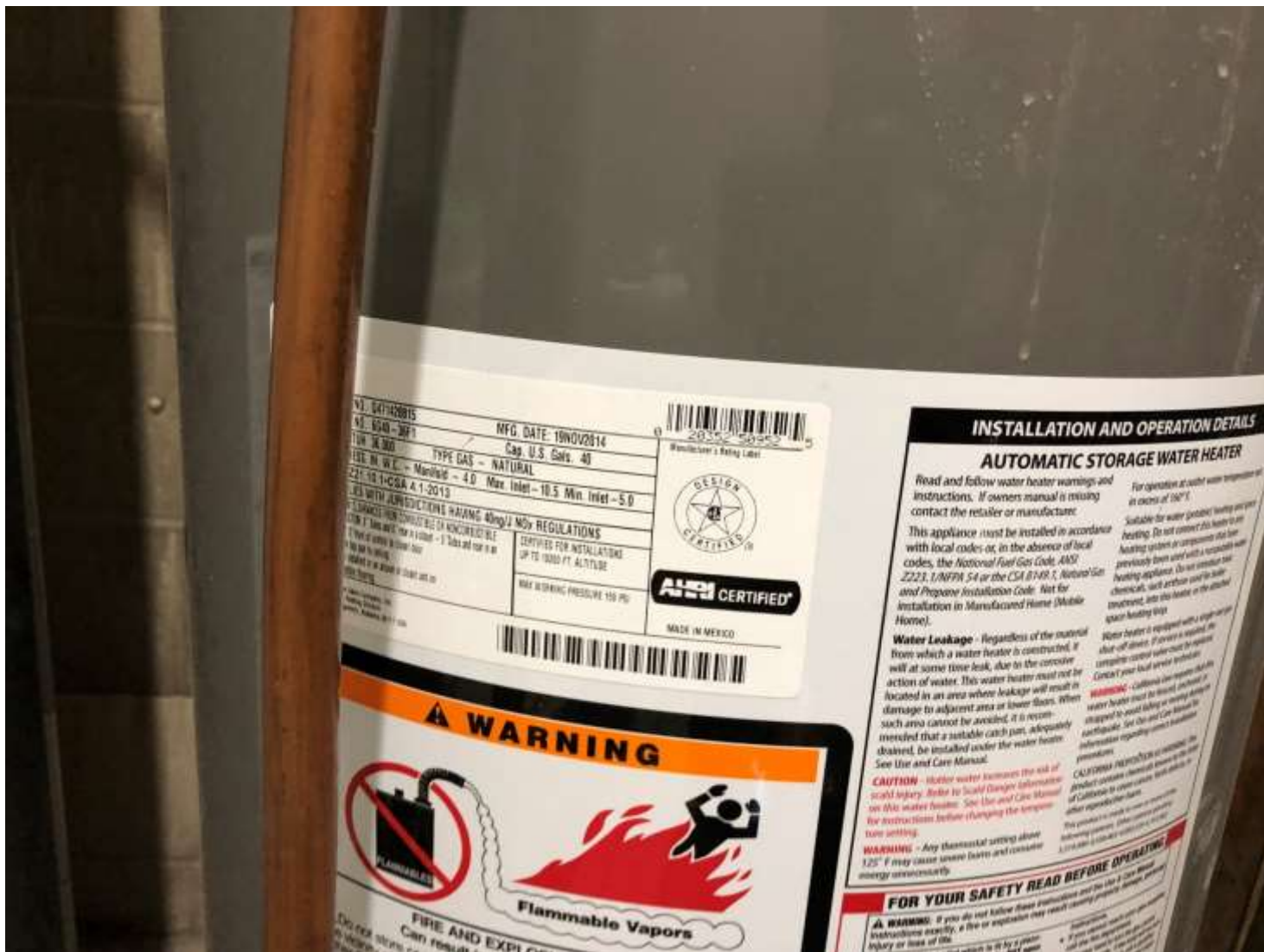


NUMÉRO DE SÉRIE



MODÈLE

Date: June 21, 2022
 File #: 19 - 047234
 Folder Name: 933 PAYNE AVE
 PIN: 292922420044



N. 64742015
 N. 6540 - 30FT
 TUR. 30.00
 USE IN W.C. - Mansfield - 4.0
 221-10 1-C8A 4.1-2013
 NFG. DATE: 19NOV2014
 Cap. U.S. Gals. 40
 TYPE GAS - NATURAL
 Min. Inlet - 10.5 Min. Inlet - 5.0
 LISTED WITH APPROVED HAVING 4000/2 NSF REGULATIONS
 CERTIFIED FOR INSTALLATIONS UP TO 10000 FT ALTITUDE
 MAX WORKING PRESSURE 150 PSI
 MADE IN MEXICO
 2014 254535
 Manufacturer's Rating Label
 AUST CERTIFIED

WARNING

FLAMMABLE

Flammable Vapors

FIRE AND EXPLOSION
 Can result in...

INSTALLATION AND OPERATION DETAILS

AUTOMATIC STORAGE WATER HEATER

Read and follow water heater warnings and instructions. If owners manual is missing contact the retailer or manufacturer.

This appliance must be installed in accordance with local codes or, in the absence of local codes, the National Fuel Gas Code, ANSI Z223.1/NFPA 54 or the CSA B149.1, National and Propane Installation Code. Not for installation in Manufactured Home (Mobile Home).

Water Leakage - Regardless of the material from which a water heater is constructed, it will at some time leak, due to the corrosive action of water. This water heater must not be located in an area where leakage will result in damage to adjacent area or lower floor. When such area cannot be avoided, it is recommended that a suitable catch pan, adequately drained, be installed under the water heater. See Use and Care Manual.

CAUTION - Hotter water increases the risk of scald injury. Refer to Scald Danger Information on this water heater. See Use and Care Manual for instructions before changing the temperature setting.

WARNING - Any thermostat setting above 125° F may cause severe burns and consume energy unnecessarily.

For operation at water temperature not in excess of 120° F.

Not for use in water circulation heating and space heating. Do not connect this heater to any heating system in conjunction with a previously listed water heater. Do not connect this heater to any heating system in conjunction with a previously listed water heater. Do not connect this heater to any heating system in conjunction with a previously listed water heater. Do not connect this heater to any heating system in conjunction with a previously listed water heater.

WARNING - California law requires that this water heater must be tested, installed, or repaired by a person holding a valid license or certificate of qualification. See Use and Care Manual for information regarding correct installation procedures.

CALIFORNIA PROPOSITION 65 - This product contains chemicals known to the State of California to cause cancer, birth defects or other reproductive harm.

FOR YOUR SAFETY READ BEFORE OPERATING

WARNING - If you do not follow these instructions and the Use & Care Manual instructions exactly, a fire or explosion may result causing property damage, personal injury or loss of life.