

Cleveland Avenue Summary of Engineering Recommendations:

APPENDIX





- a. Project Map – Existing and Proposed Parking Conditions**



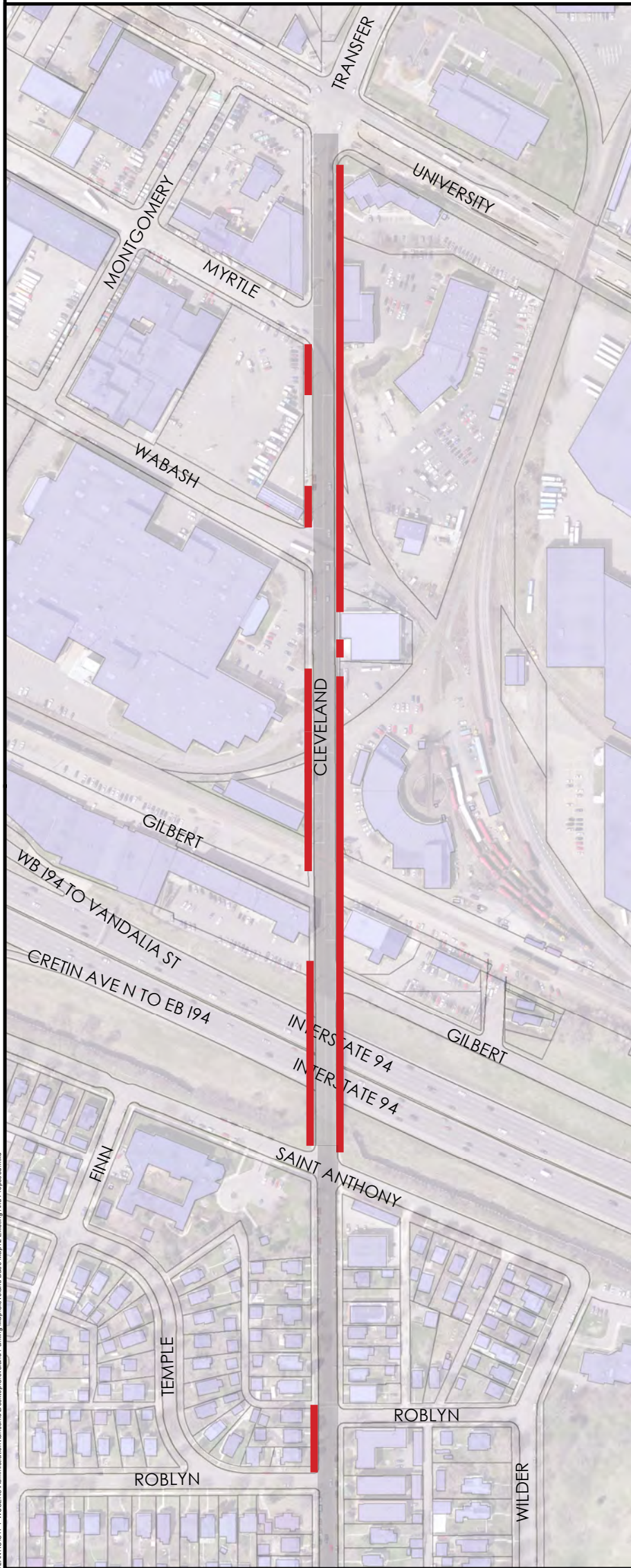
Cleveland Avenue Bicycle Lanes: Existing & Planned Parking Conditions

Page 1 of 6

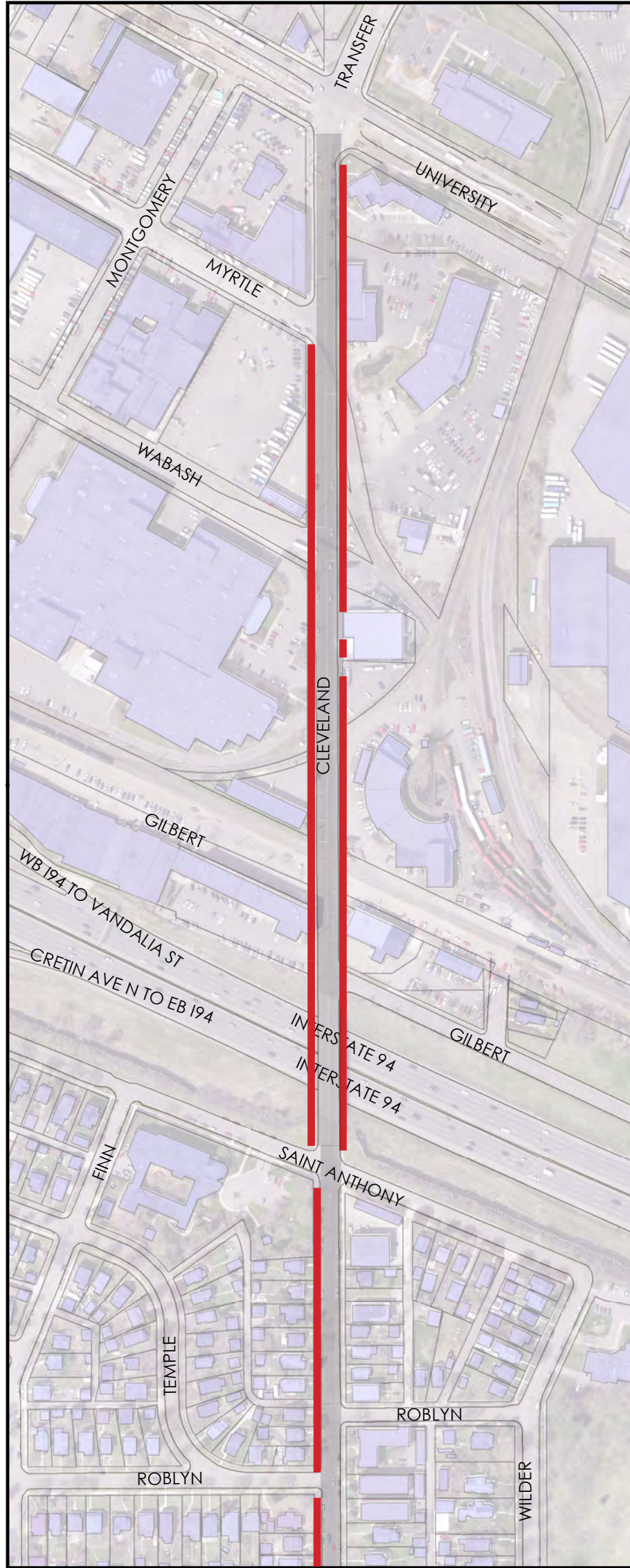
Legend

-  No Parking
-  Time-Limited Parking
-  Permit Parking
-  Parking Mitigation Strategy

Existing Parking Conditions:



Planned Parking Conditions:



\\ATLANTIS\GIS\PROJECTS\Administration\GIS\Projects\Cleveland Ave Bicycle Lane Map\12 Existing And Proposed.mxd



0 250 500 Feet

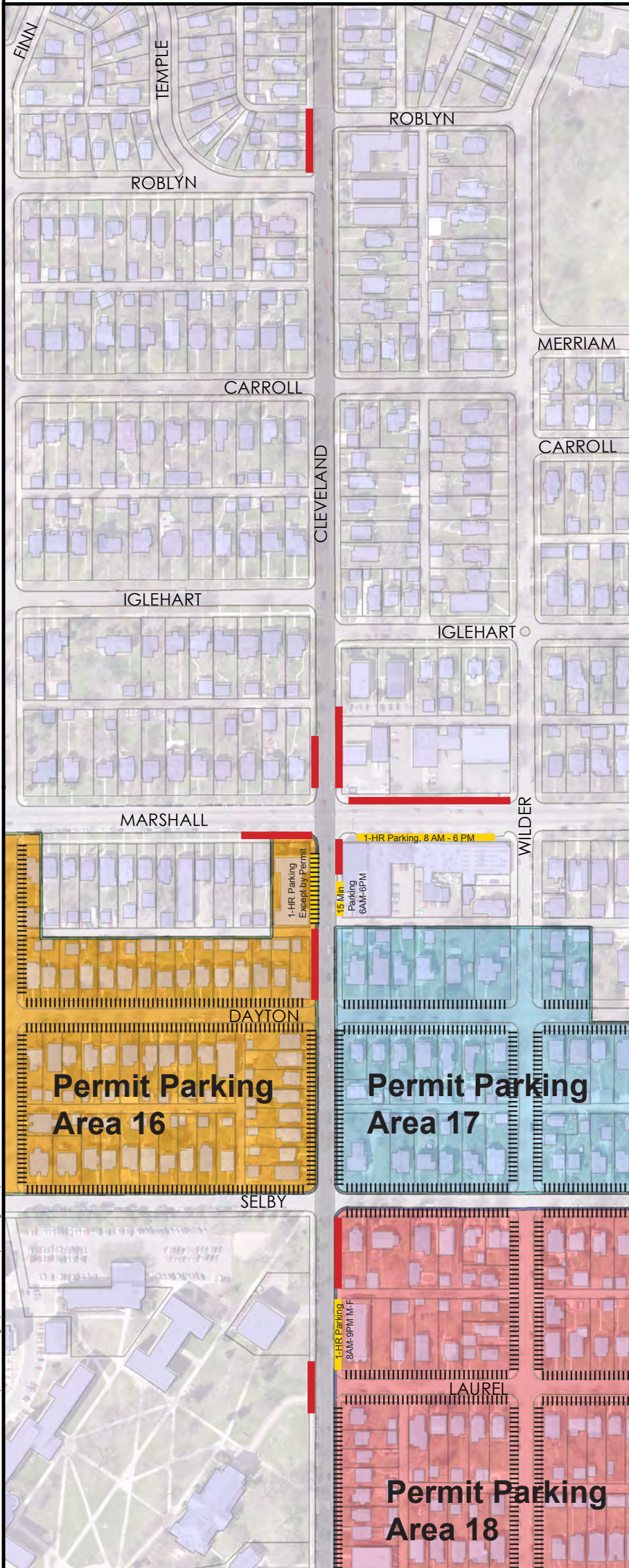


Cleveland Avenue Bicycle Lanes: Existing & Planned Parking Conditions

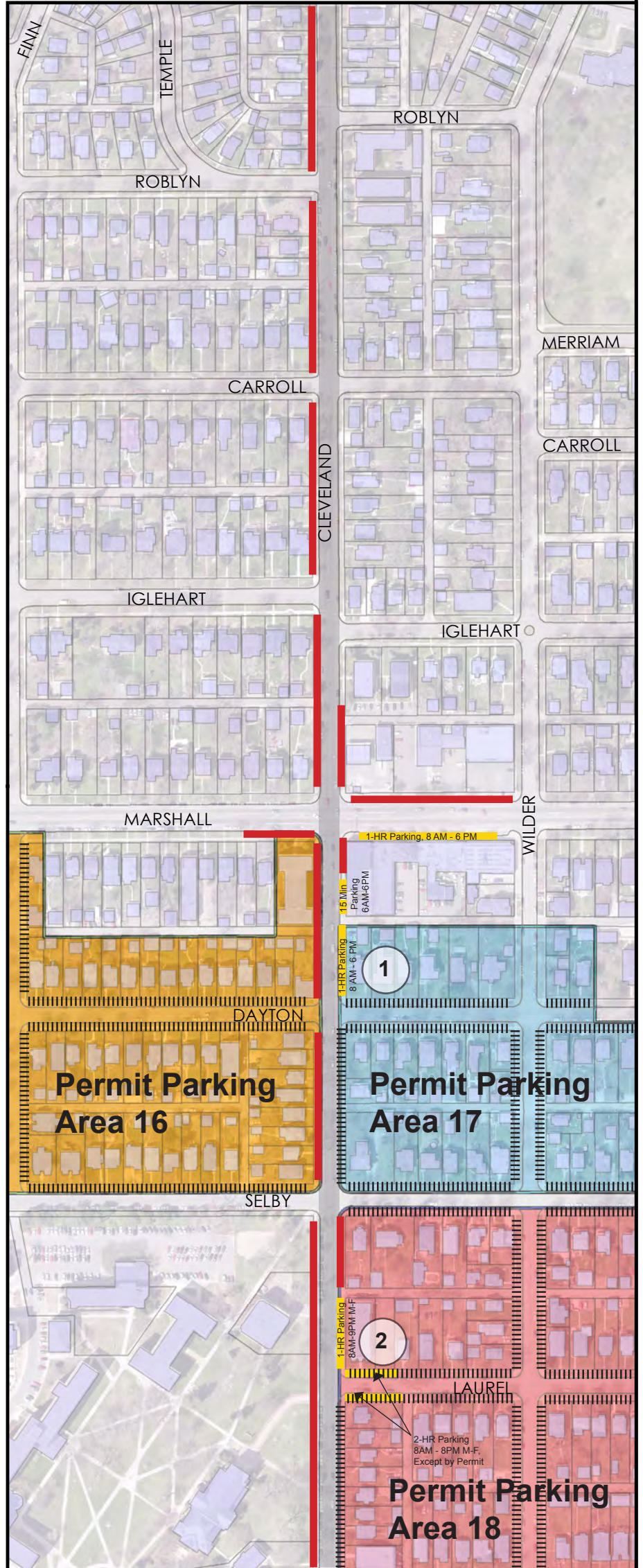
Legend

- No Parking
- Time-Limited Parking
- Permit Parking
- # Parking Mitigation Strategy

Existing Parking Conditions:



Planned Parking Conditions:



- 1 STRATEGY 1: Implement time-limited parking (1-hour, 8 AM – 6 PM) on the east side of Cleveland between Dayton and the alleyway. This will replace all the time-limited parking capacity removed on the west side of Cleveland between Marshall and Dayton.
- 2 STRATEGY 2: Allow time-limited parking (2-hour, 8 AM - 8 PM, Monday - Friday), in addition to existing permit parking, on the north and south sides of Laurel Avenue extending 85' east from Cleveland Avenue



0 250 500 Feet

G:\LAN\GIS\TP-PW\SEIS\Administration\GIS\Design\Cleveland Parking Map\Cleveland Base Map12 Existing And Proposed.mxd

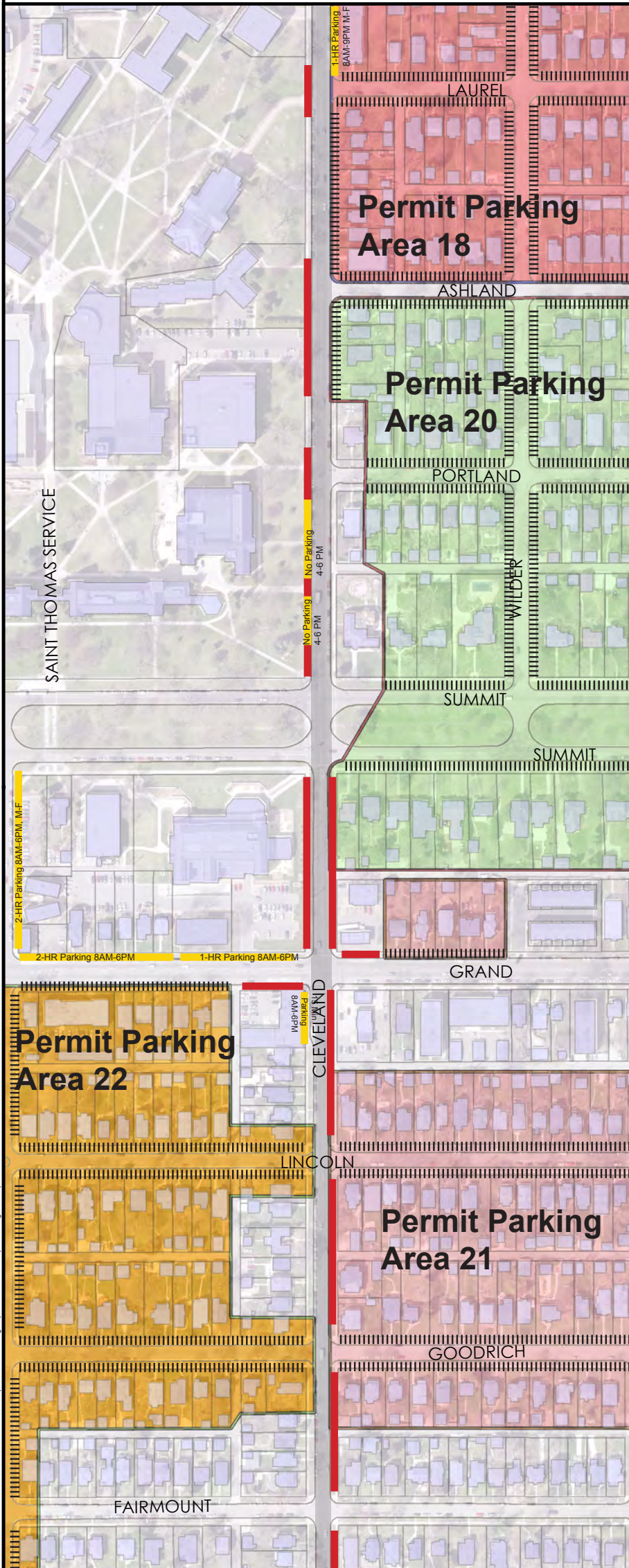


Cleveland Avenue Bicycle Lanes: Existing & Planned Parking Conditions

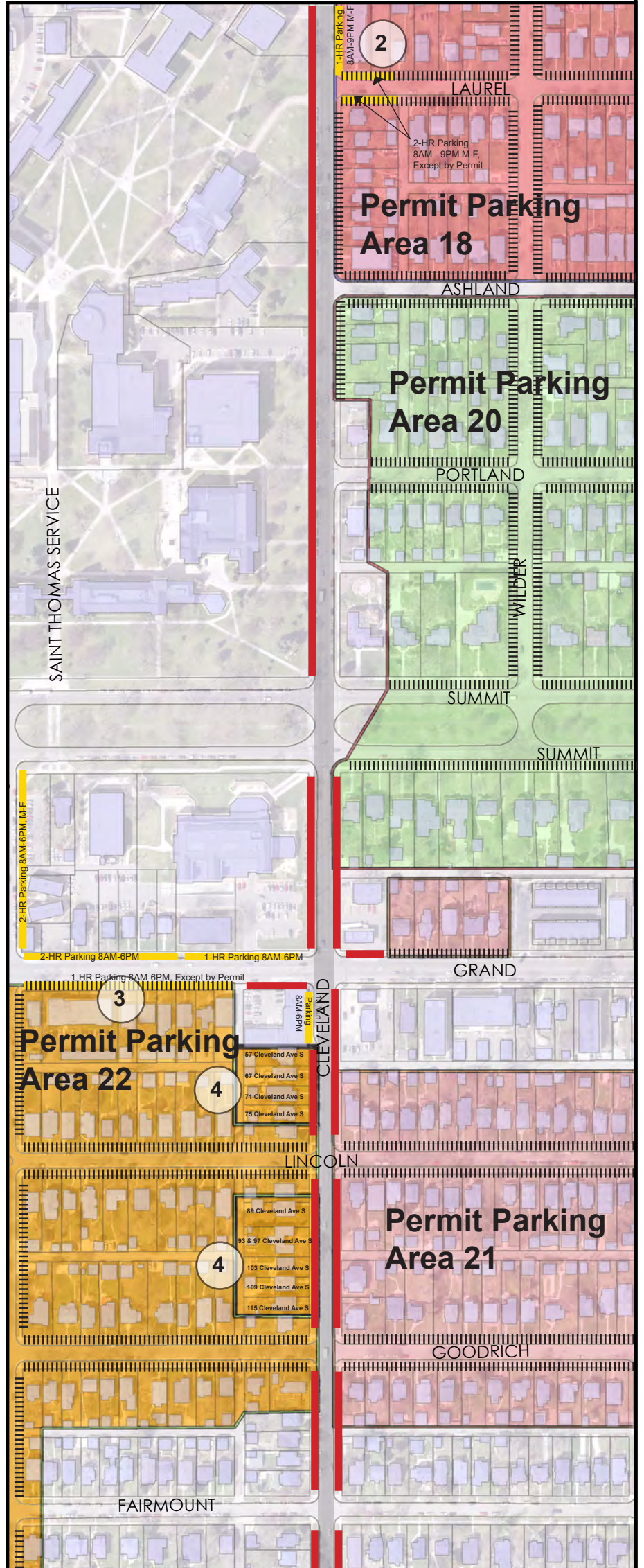
Legend

- No Parking
- Time-Limited Parking
- Permit Parking
- # Parking Mitigation Strategy

Existing Parking Conditions:



Planned Parking Conditions:



3

STRATEGY 3: Allow time-limited parking (1-hour, 8 AM – 6 PM), in addition to existing permit parking, along the south side of Grand Avenue between Finn Street and Cleveland Avenue.

4

STRATEGY 4: Amend Permit Parking Area 22 to include the following Cleveland Avenue addresses: 57, 67, 71, 75, 89, 93, 97, 103, 109, & 115 Cleveland Avenue S




0 250 500 Feet

\\LAN101517P\FW\SEIS\Administration\GIS\Projects\Cleveland Bicycle Map12 Existing And Proposed.mxd

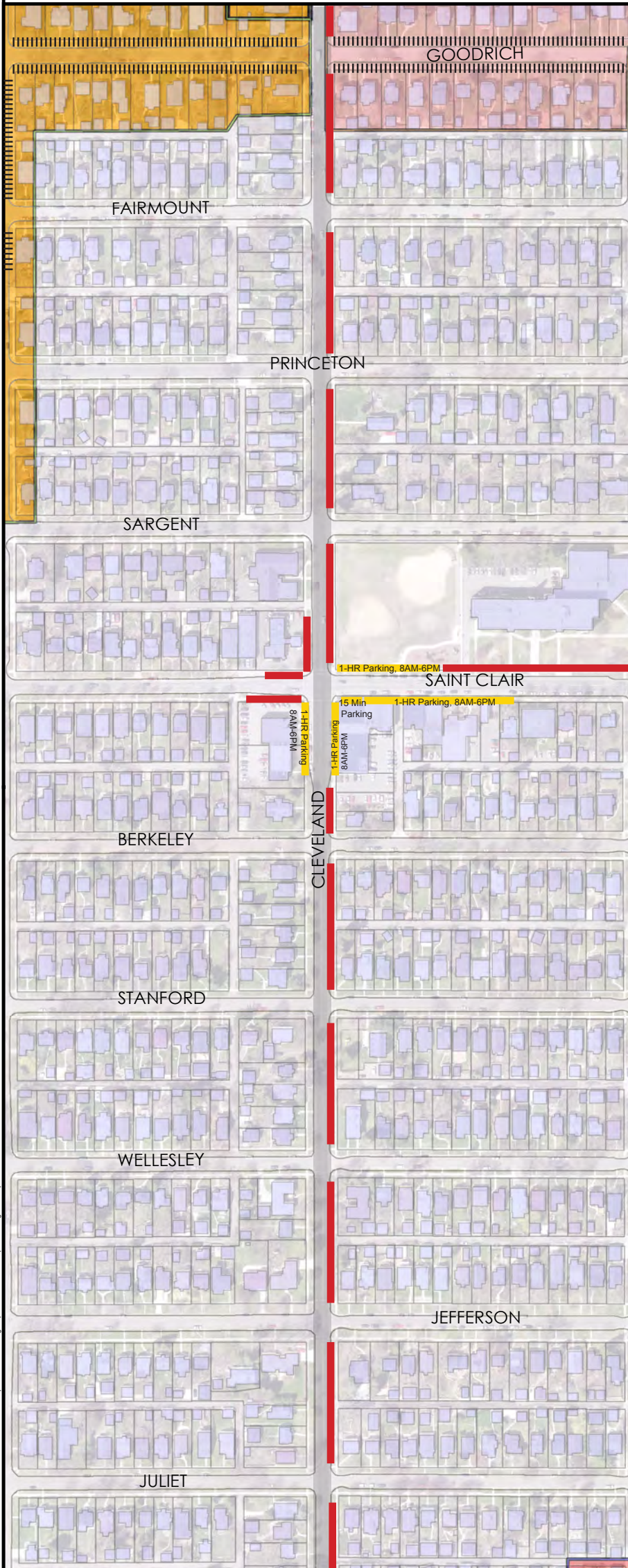


Cleveland Avenue Bicycle Lanes: Existing & Planned Parking Conditions

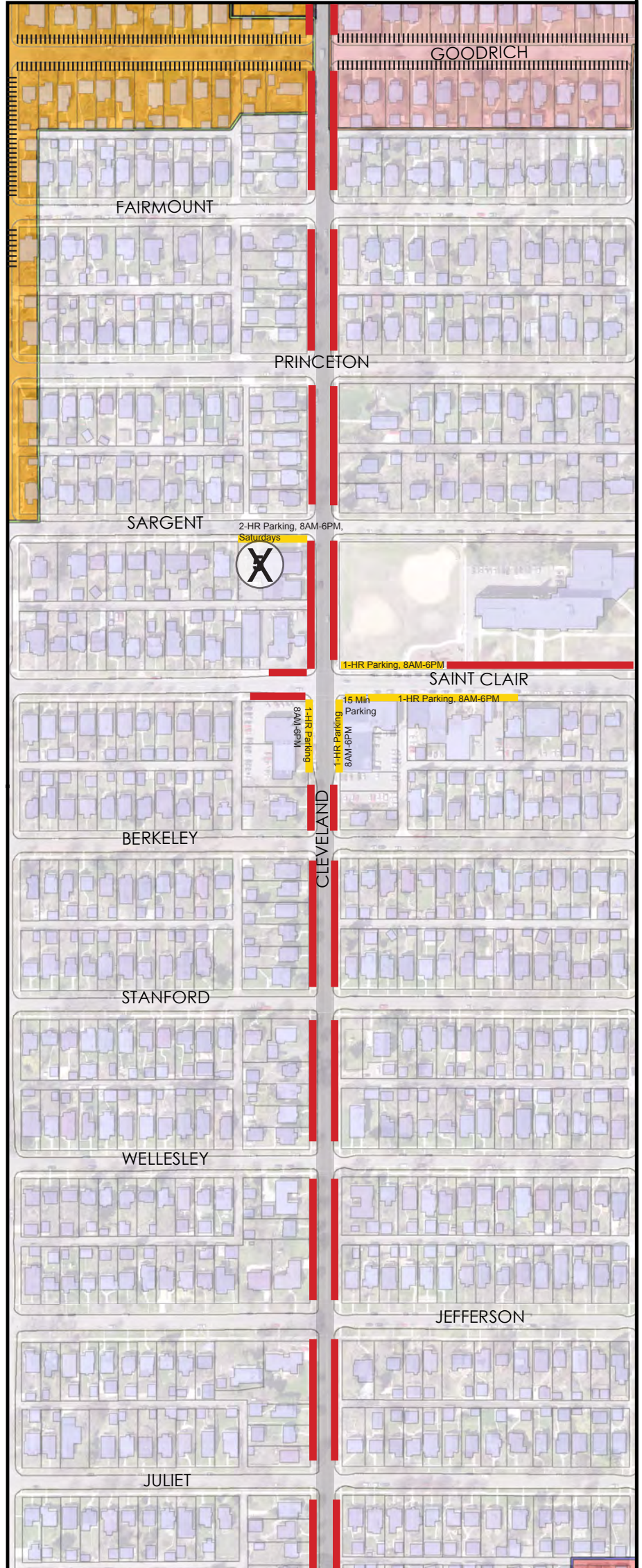
Legend

-  No Parking
-  Time-Limited Parking
-  Permit Parking
-  Parking Mitigation Strategy

Existing Parking Conditions:



Planned Parking Conditions:



STRATEGY 5: Allow time-limited parking signs (2 Hour Parking, 8AM – 6PM, Saturdays) along the south side of Sargent Avenue from Cleveland west to the Synagogue property line during Saturdays:

Strategy 5 to allow time limited parking on the south side of Sargent Avenue is no longer being pursued.





0 250 500 Feet

X:\LAN\GIS\TP-PW\SEBS\Administration\GIS\Desktop\Cleveland Parking Map\Cleveland Block Map12 Existing And Proposed.mxd

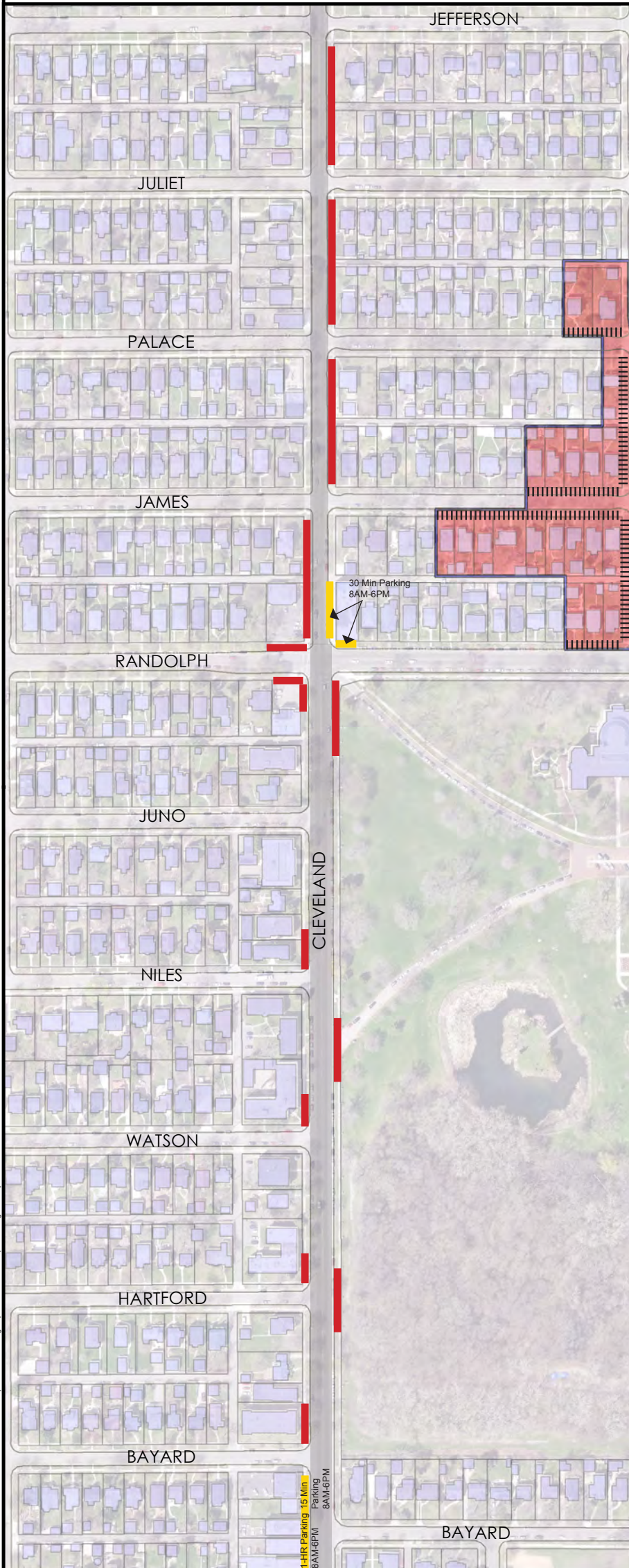


Cleveland Avenue Bicycle Lanes: Existing & Planned Parking Conditions

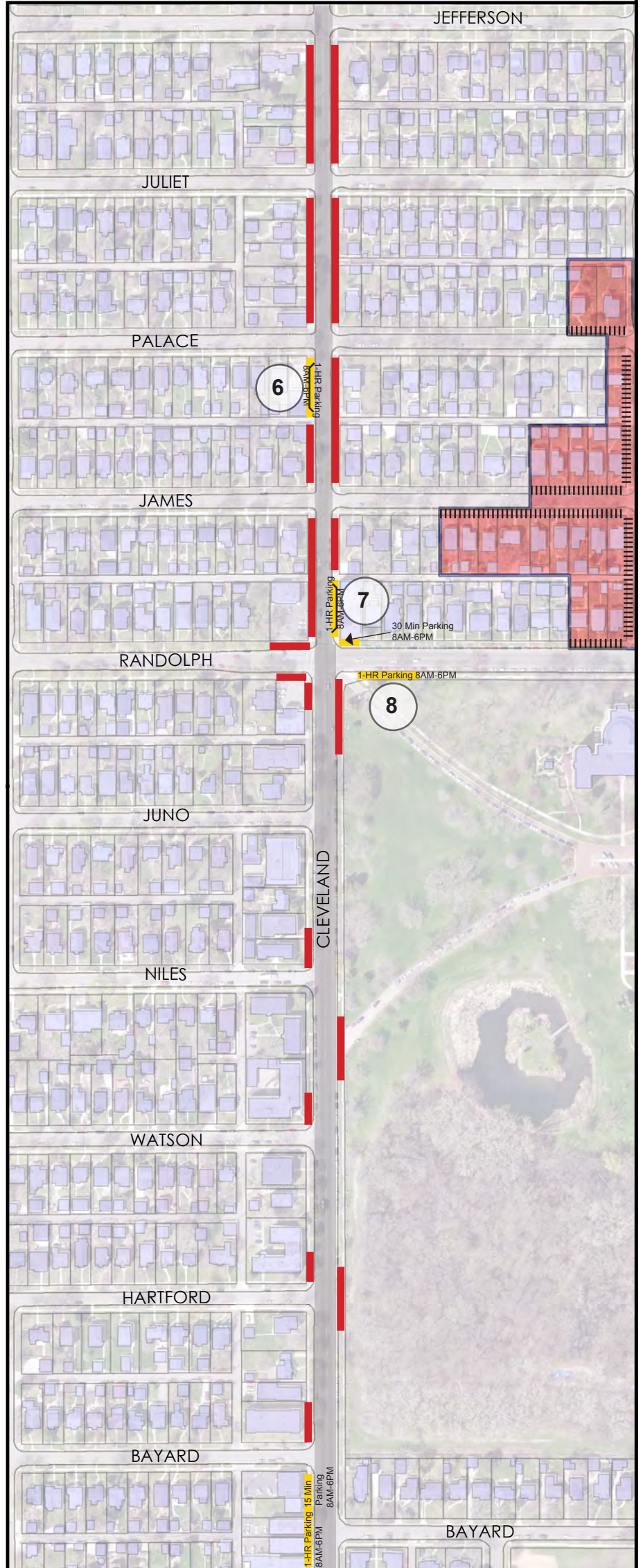
Legend

-  No Parking
-  Time-Limited Parking
-  Permit Parking
-  Parking Mitigation Strategy

Existing Parking Conditions:



Planned Parking Conditions:



6

STRATEGY 6: Construct a half-block parking bay with time-limited parking (1 Hour Parking, 8AM - 6PM) on the west side of Cleveland Ave, extending from Palace Ave south to the alleyway.

7

STRATEGY 7: Construct a half-block parking bay with time-limited parking (1 Hour Parking, 8AM - 6PM) on the east side of Cleveland Ave, extending from Randolph Ave north to the alleyway.

8

STRATEGY 8: Create new time-limited parking capacity (1-hour 8 AM – 6 PM) on the south side of Randolph Avenue for 85' east of Cleveland Avenue.



0 250 500 Feet

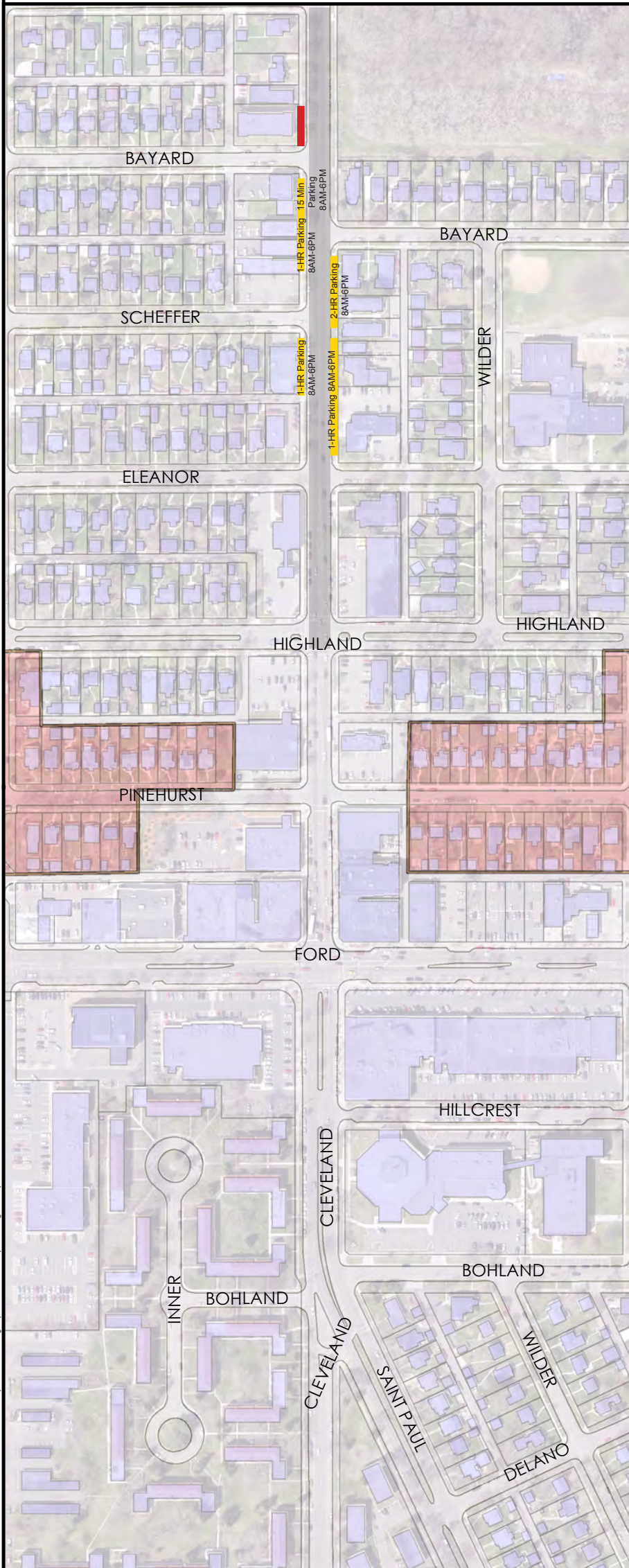


Cleveland Avenue Bicycle Lanes: Existing & Planned Parking Conditions

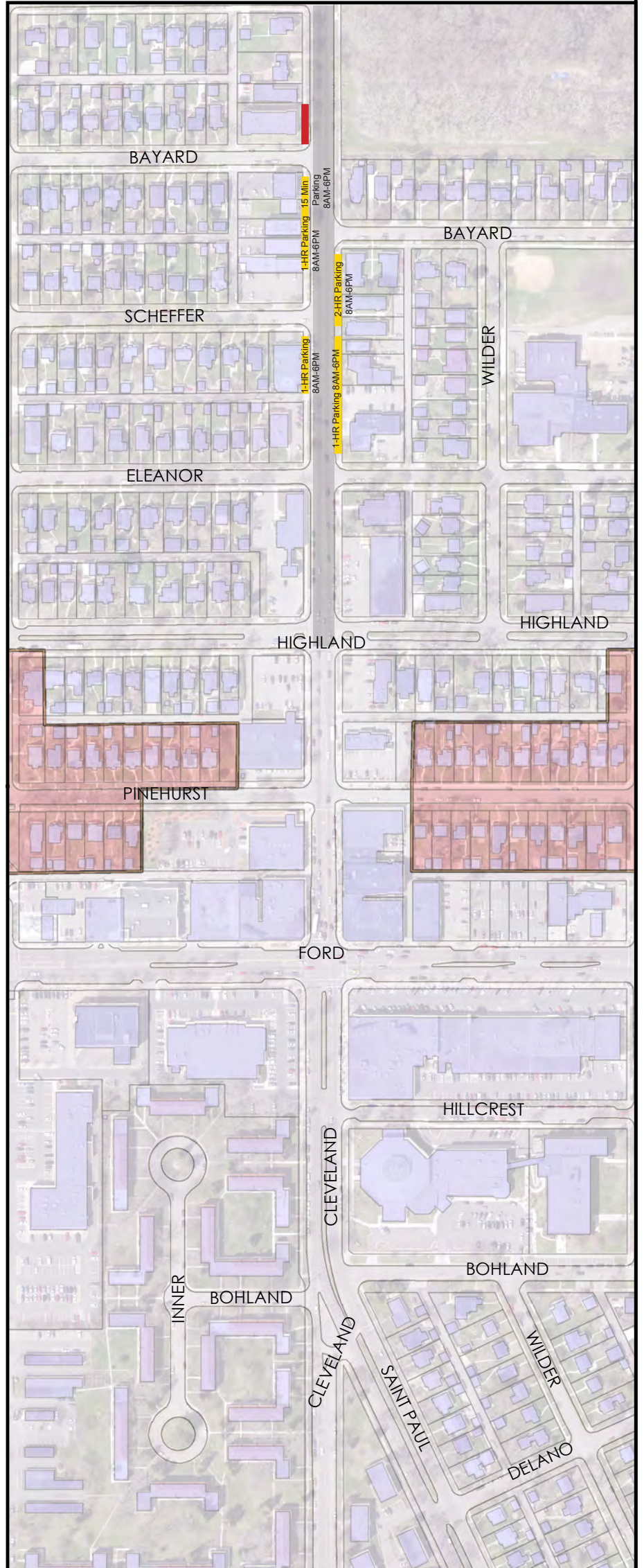
Legend

- No Parking
- Time-Limited Parking
- Permit Parking
- Parking Mitigation Strategy

Existing Parking Conditions:



Planned Parking Conditions:



\\ATLANTIS15\FP-W\SEIS\Administration\GIS\Desktop\Cleveland Parking Map\Cleveland Base Map12 Existing And Proposed.mxd



0 250 500 Feet

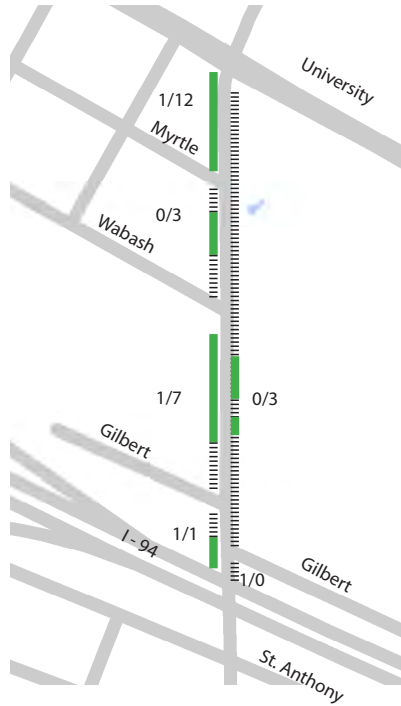
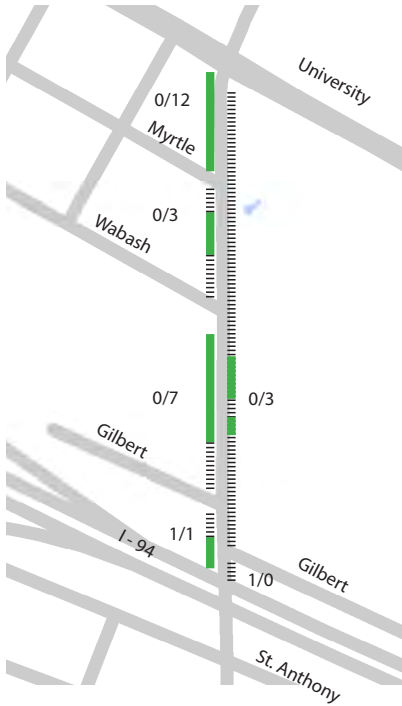
APPENDIX

b. Parking Survey Data (University Avenue to Randolph Avenue)

Cleveland Ave Parking Counts (University to St. Anthony) Weekday Early Morning (4 AM - 6 AM)

Date: Tuesday, September 29
Time Period: 4AM - 6 AM

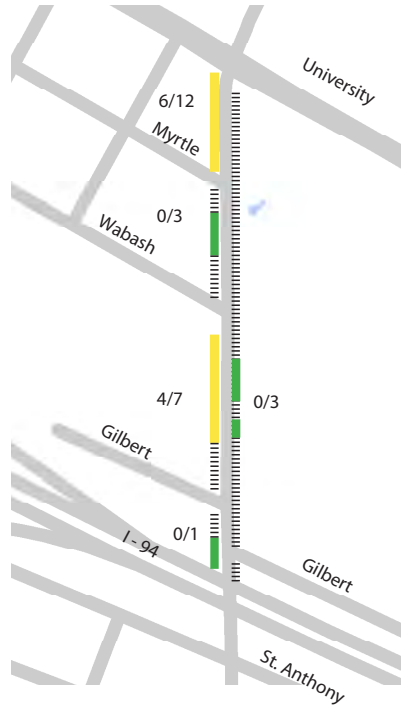
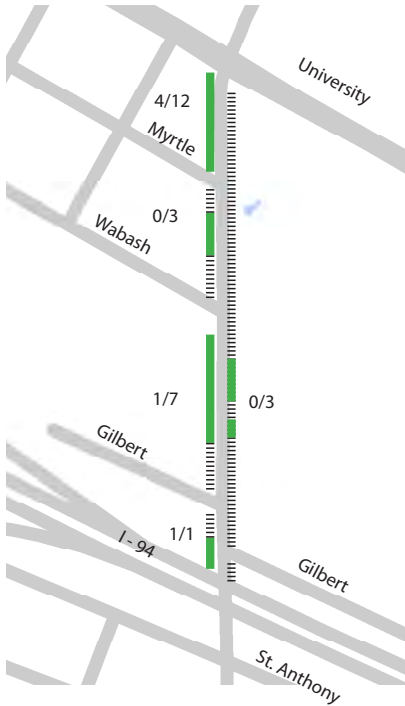
Date: Tuesday, October 13
Time Period: 4AM - 6 AM



Cleveland Ave Parking Counts (University to St. Anthony) Weekday Midday (11 AM - 1 PM)





Date: Tuesday, September 29
Time Period: 11 AM - 1 PM

Date: Tuesday, October 13
Time Period: 11 AM - 1 PM



Legend

Observed Parking Utilization

-  Signed "No Parking"
-  0 - 49%
-  50 - 74%
-  75 - 100+%

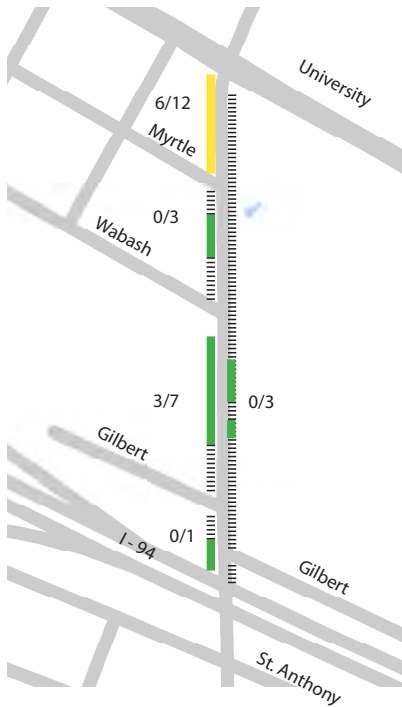
Example: 8/11 =

Observed Parked Cars /
Estimated Legal Parking Capacity

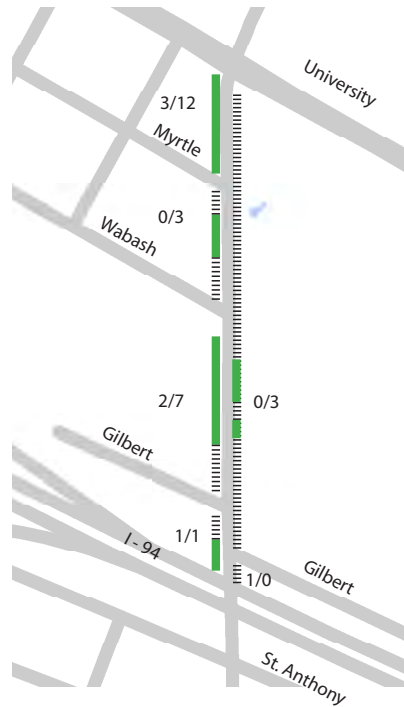
(Observed parking utilization may
exceed estimated legal capacity)

Cleveland Ave Parking Counts (University to St. Anthony) Weekday Evening (6 PM - 8 PM)

Date: Wednesday, September 16
Time Period: 6 PM - 8 PM

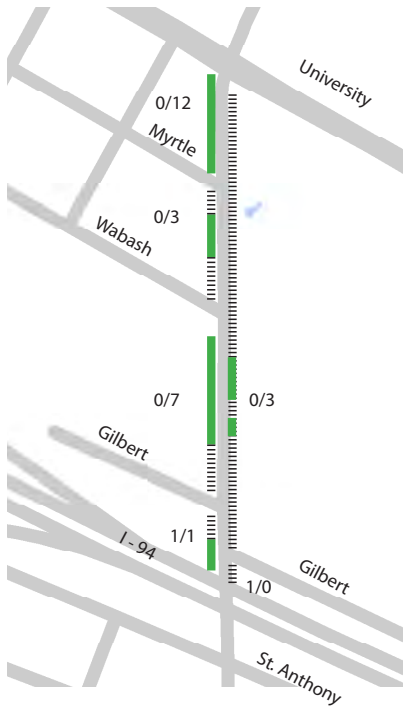


Date: Wednesday, September 23
Time Period: 6 PM - 8 PM

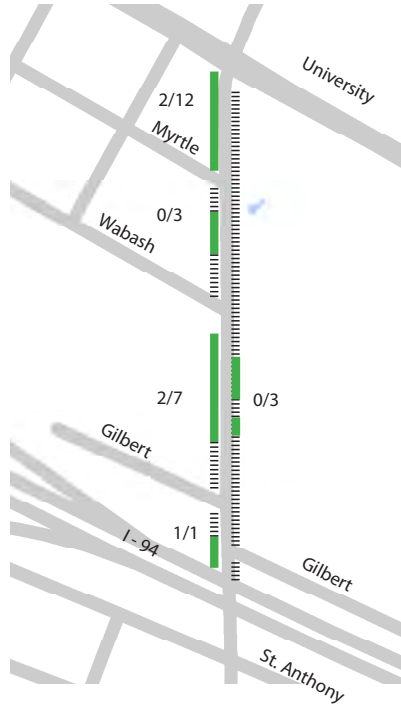


Cleveland Ave Parking Counts (St. Anthony to Summit) Saturday Midday (11 AM - 1 PM)

Date: Saturday, September 26
Time Period: 11 AM - 1 PM



Date: Saturday, October 10
Time Period: 11 AM - 1 PM



Legend

Observed Parking Utilization

- Signed "No Parking"
- 0 - 49%
- 50 - 74%
- 75 - 100+%

Example: 8/11 =

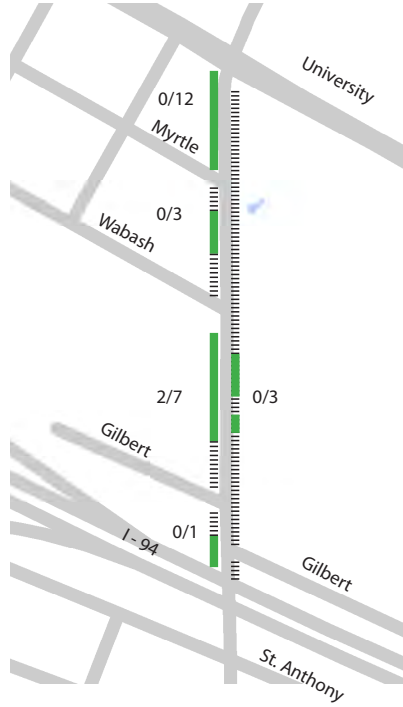
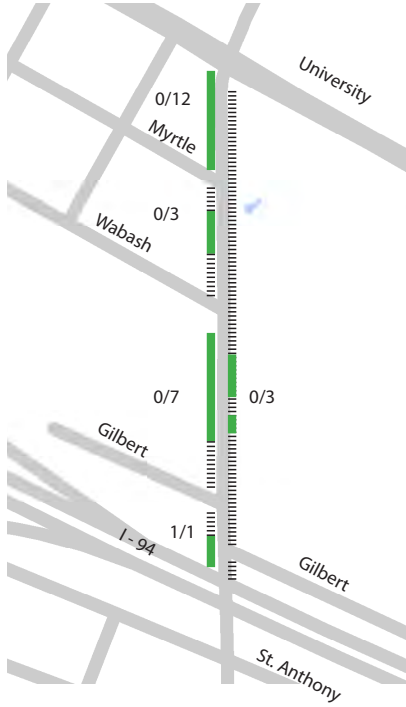
Observed Parked Cars /
Estimated Legal Parking Capacity

(Observed parking utilization may
exceed estimated legal capacity)

Cleveland Ave Parking Counts (St. Anthony to Summit) Saturday Evening (6 PM - 8 PM)

Date: Saturday, September 26
Time Period: 6 PM - 8 PM

Date: Saturday, October 10
Time Period: 6 PM - 8 PM



Legend

Observed Parking Utilization

- Signed "No Parking"
- 0 - 49%
- 50 - 74%
- 75 - 100+%

Example: 8/11 =

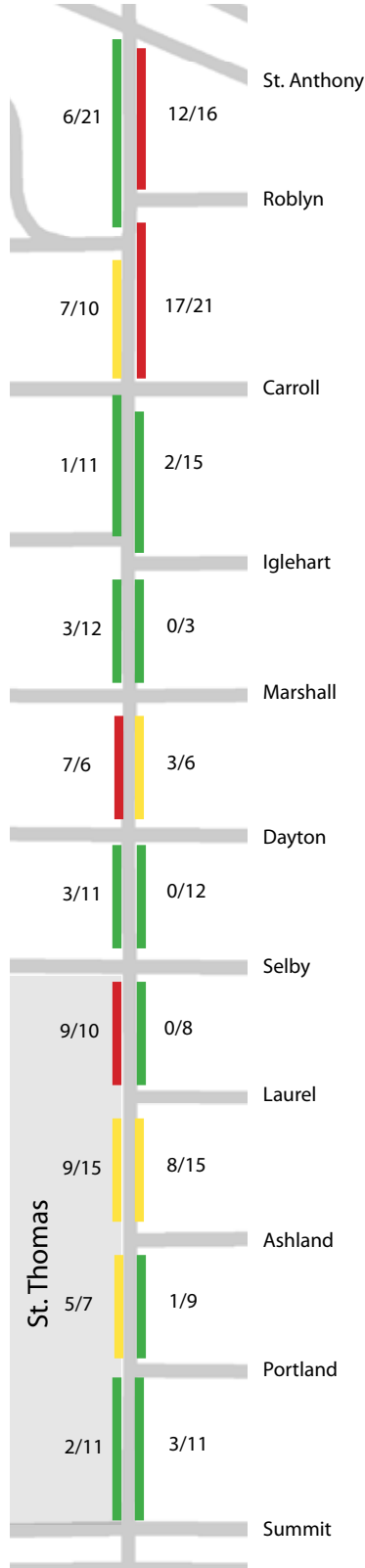
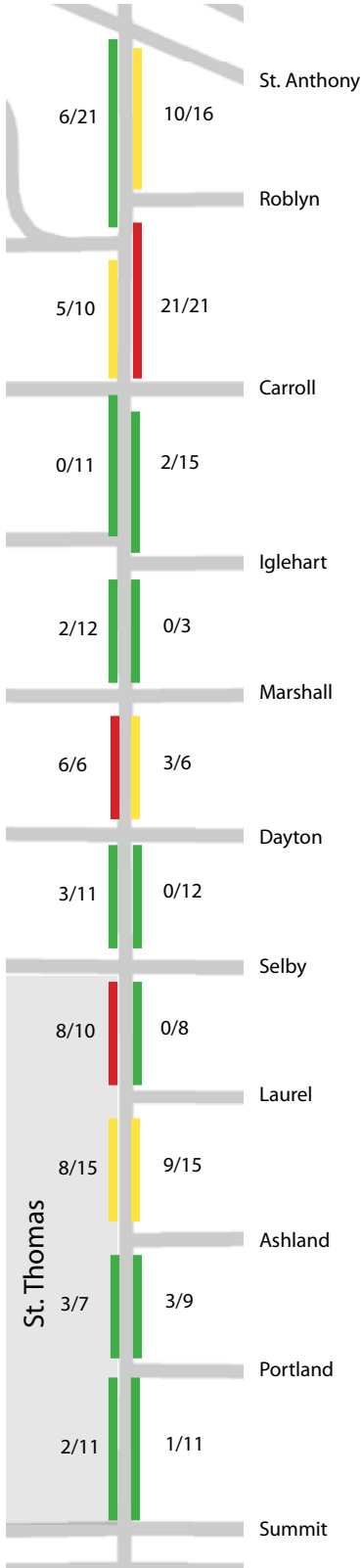
Observed Parked Cars /
Estimated Legal Parking Capacity

(Observed parking utilization may
exceed estimated legal capacity)

Cleveland Ave Parking Counts (St. Anthony to Summit) Weekday Early Morning (4 AM - 6 AM)

Date: Tuesday, September 29
Time Period: 4AM - 6 AM

Date: Tuesday, October 13
Time Period: 4AM - 6 AM



Legend

Observed Parking Utilization

- ▬ Signed "No Parking"
- ▬ 0 - 49%
- ▬ 50 - 74%
- ▬ 75 - 100+%

Example: 8/11 =

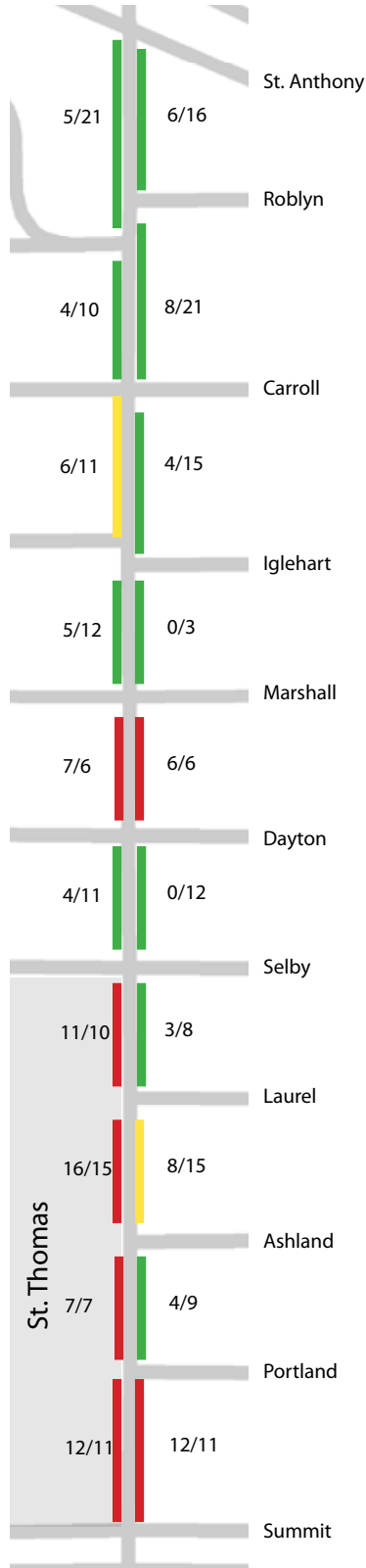
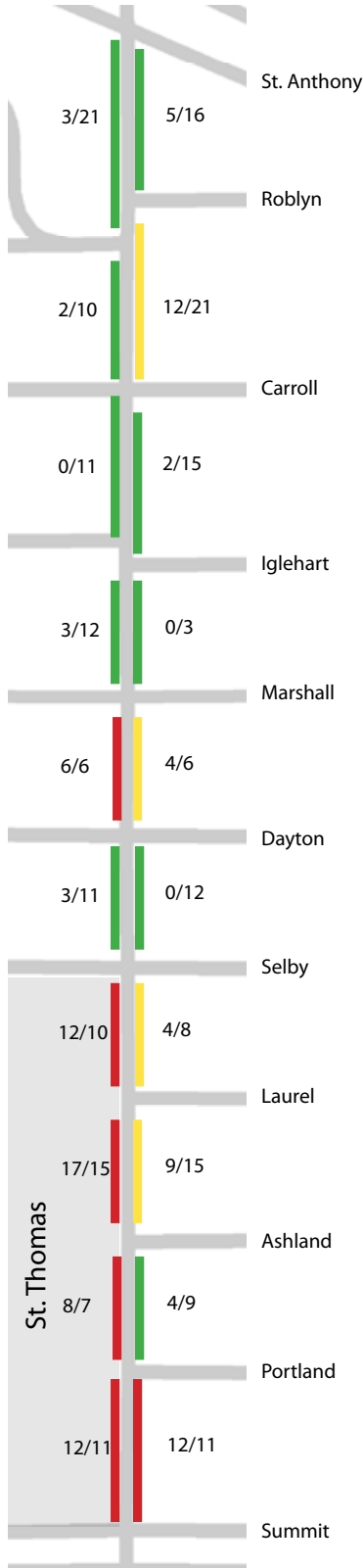
Observed Parked Cars /
Estimated Legal Parking Capacity

(Observed parking utilization may
exceed estimated legal capacity)

Cleveland Ave Parking Counts (St. Anthony to Summit) Weekday Midday (11 AM - 1 PM)

Date: Tuesday, September 29
Time Period: 11 AM - 1 PM

Date: Tuesday, October 13
Time Period: 11 AM - 1 PM



Legend

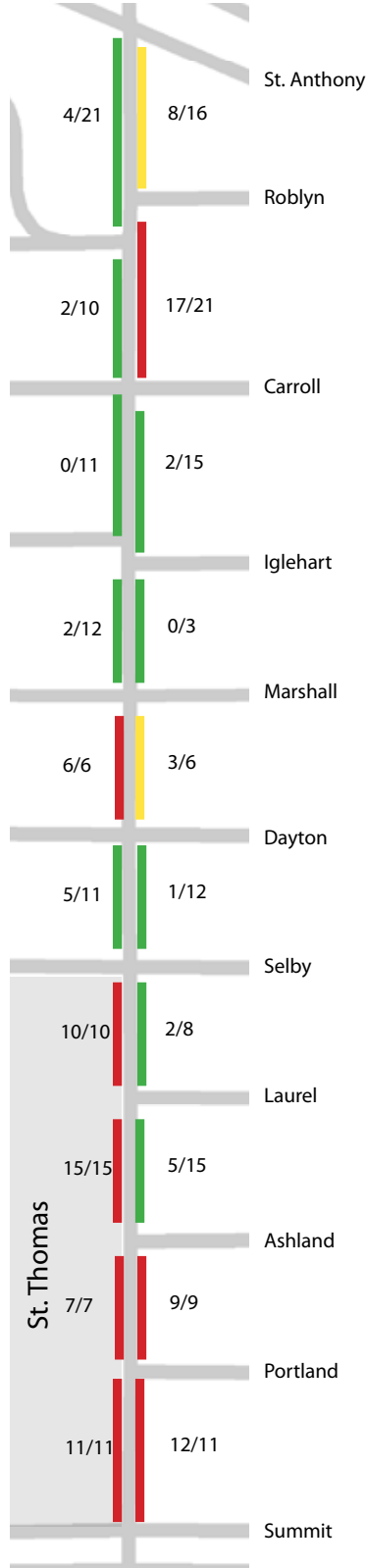
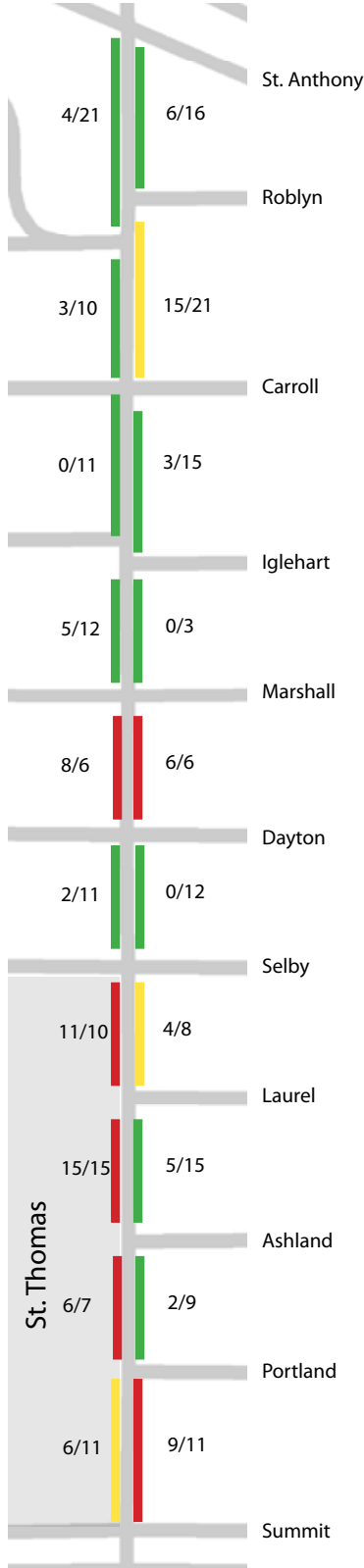
- Observed Parking Utilization
- ||||| Signed "No Parking"
 - █ 0 - 49%
 - █ 50 - 74%
 - █ 75 - 100%+

Example: 8/11 =
Observed Parked Cars /
Estimated Legal Parking Capacity
(Observed parking utilization may exceed estimated legal capacity)

Cleveland Ave Parking Counts (St. Anthony to Summit) Weekday Evening (6 PM - 8 PM)

Date: Wednesday, September 16
Time Period: 6 PM - 8 PM

Date: Wednesday, September 23
Time Period: 6 PM - 8 PM



Legend

Observed Parking Utilization

- ||||| Signed "No Parking"
- Green bar 0 - 49%
- Yellow bar 50 - 74%
- Red bar 75 - 100%+

Example: 8/11 =

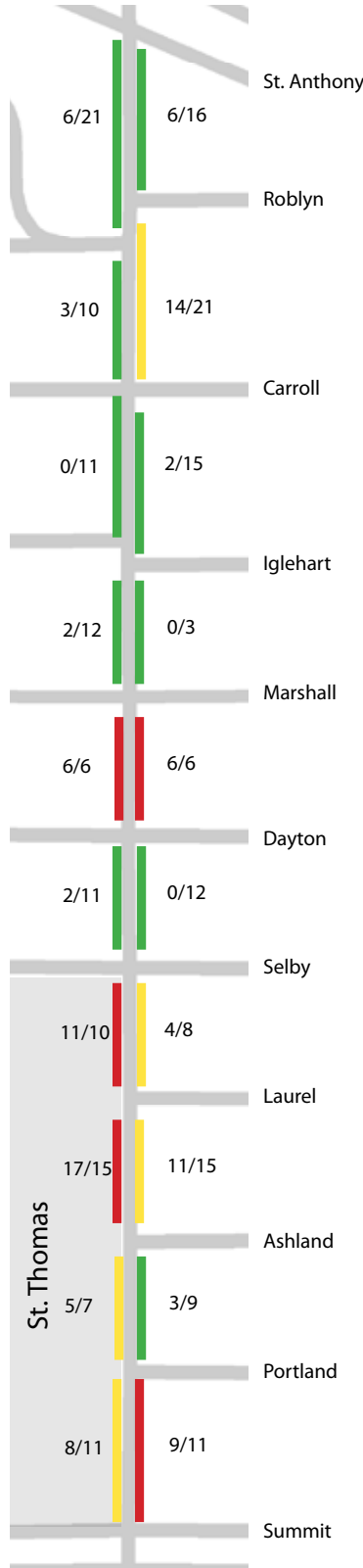
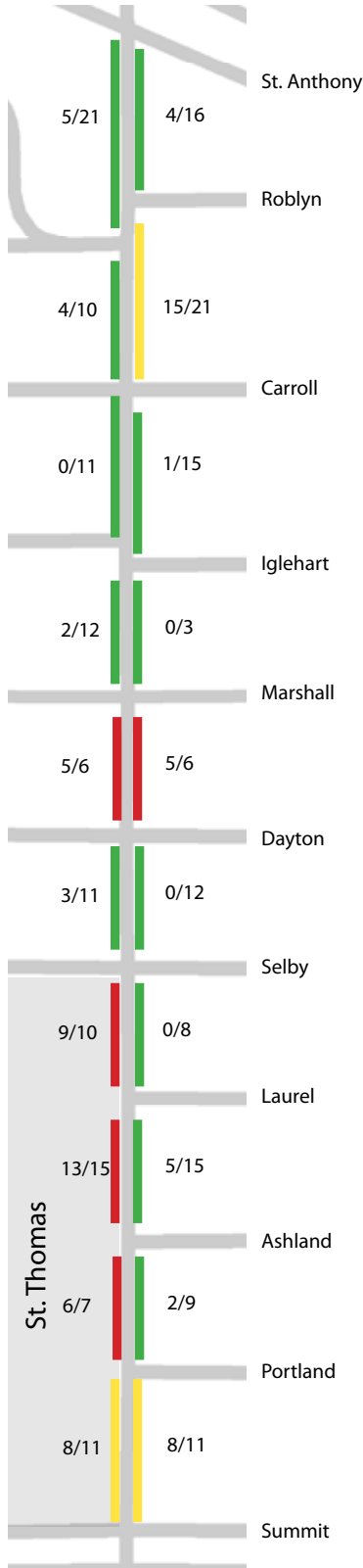
Observed Parked Cars /
Estimated Legal Parking Capacity

(Observed parking utilization may
exceed estimated legal capacity)

Cleveland Ave Parking Counts (St. Anthony to Summit) Saturday Midday (11 AM - 1 PM)

Date: Saturday, September 26
Time Period: 11 AM - 1 PM

Date: Saturday, October 10
Time Period: 11 AM - 1 PM



Legend

Observed Parking Utilization

- ||||| Signed "No Parking"
- █ 0 - 49%
- █ 50 - 74%
- █ 75 - 100%+

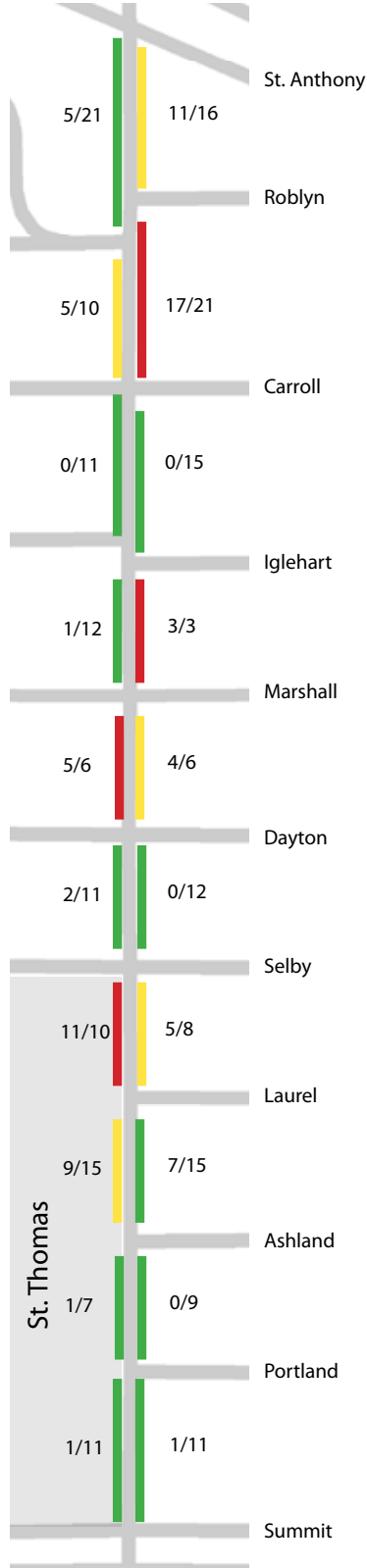
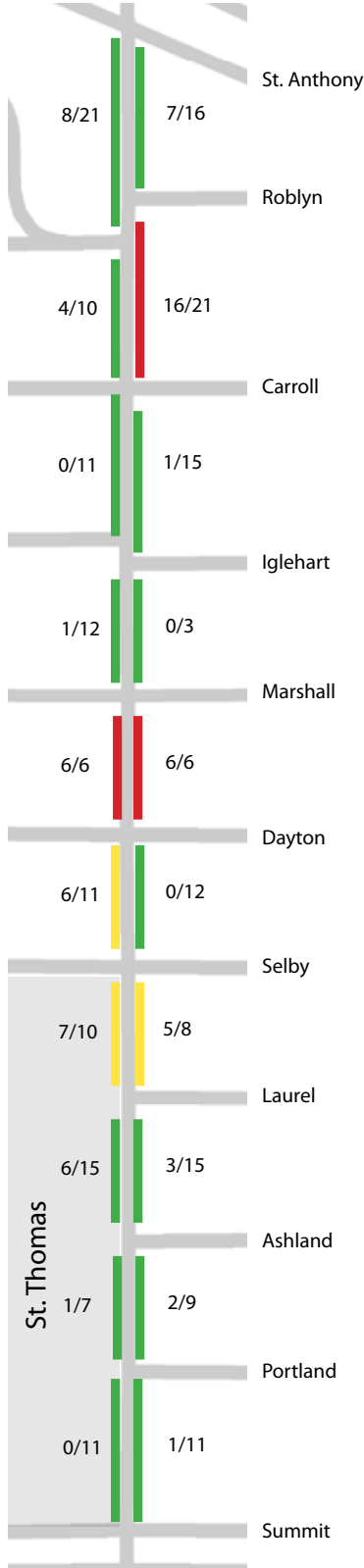
Example: 8/11 =
Observed Parked Cars /
Estimated Legal Parking Capacity

(Observed parking utilization may
exceed estimated legal capacity)

Cleveland Ave Parking Counts (St. Anthony to Summit) Saturday Evening (6 PM - 8 PM)

Date: Saturday, September 26
Time Period: 6 PM - 8 PM

Date: Saturday, October 10
Time Period: 6 PM - 8 PM



Legend

Observed Parking Utilization

- ||||| Signed "No Parking"
- █ 0 - 49%
- █ 50 - 74%
- █ 75 - 100%

Example: 8/11 =
Observed Parked Cars /
Estimated Legal Parking Capacity

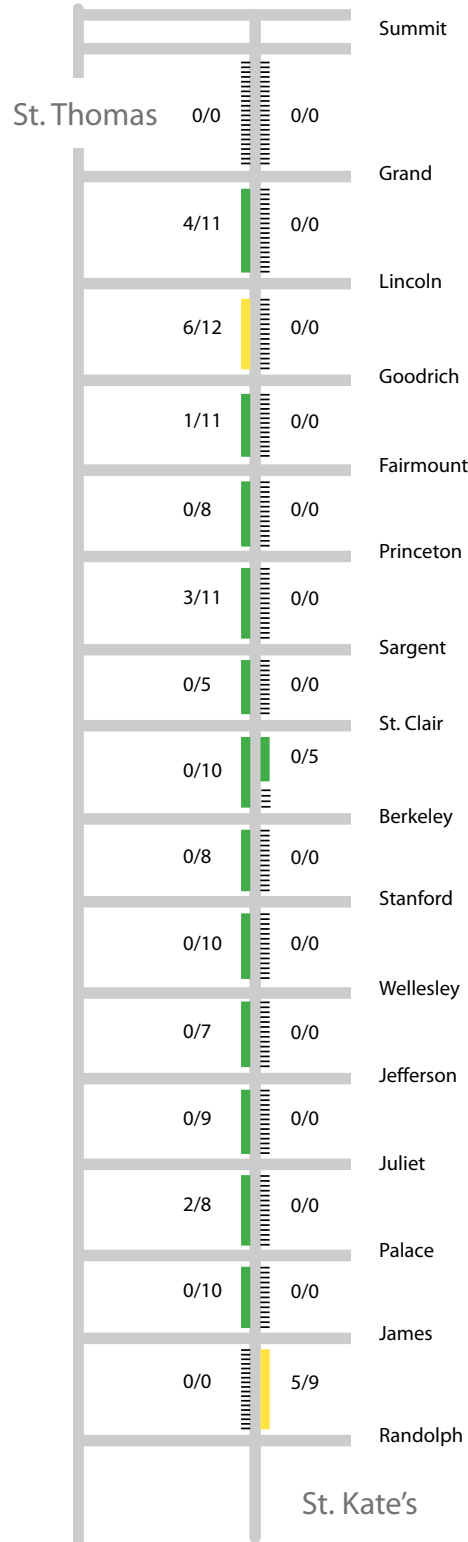
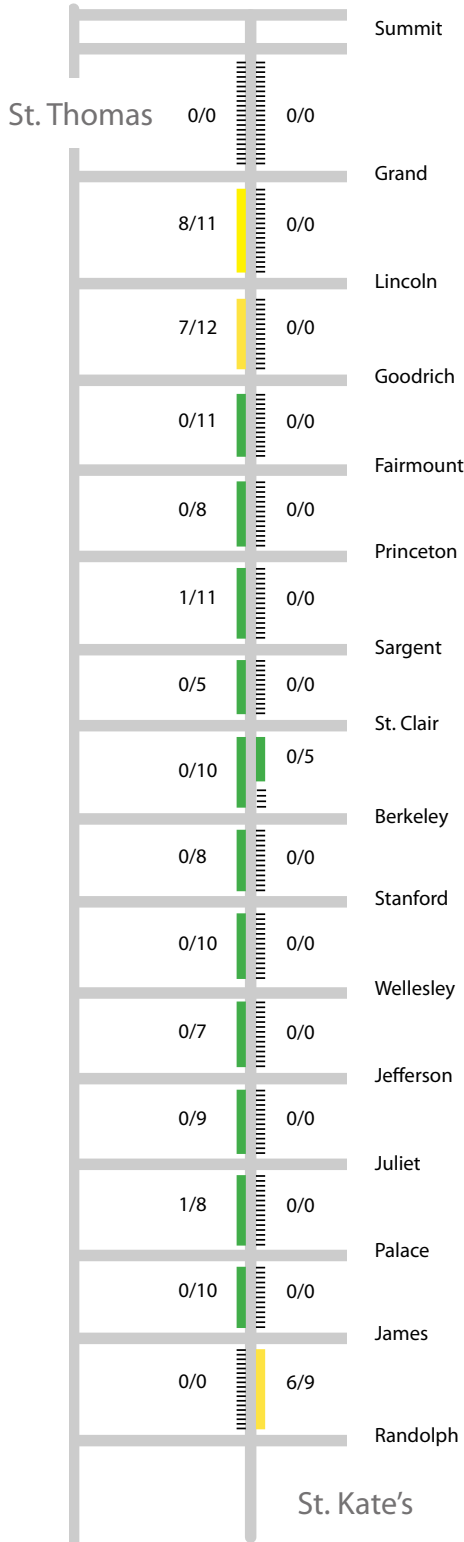
(Observed parking utilization may
exceed estimated legal capacity)

Cleveland Ave Parking Counts

Weekday early morning (4 AM - 6 AM)

Date: Tuesday, March 24th
Time Period: 4AM - 6 AM

Date: Thursday, March 26th
Time Period: 4AM - 6 AM



Legend

Observed Parking Utilization

- Signed "No Parking"
- 0 - 49%
- 50 - 74%
- 75 - 100+%

Example: 8/11 =
Observed Parked Cars /
Estimated Legal Parking Capacity

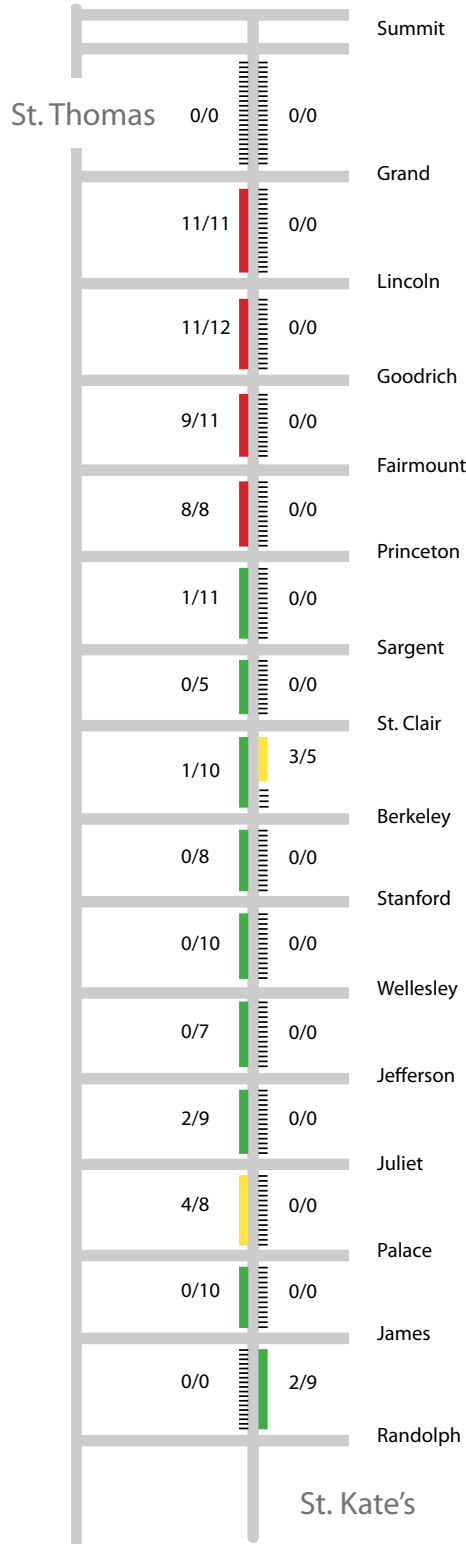
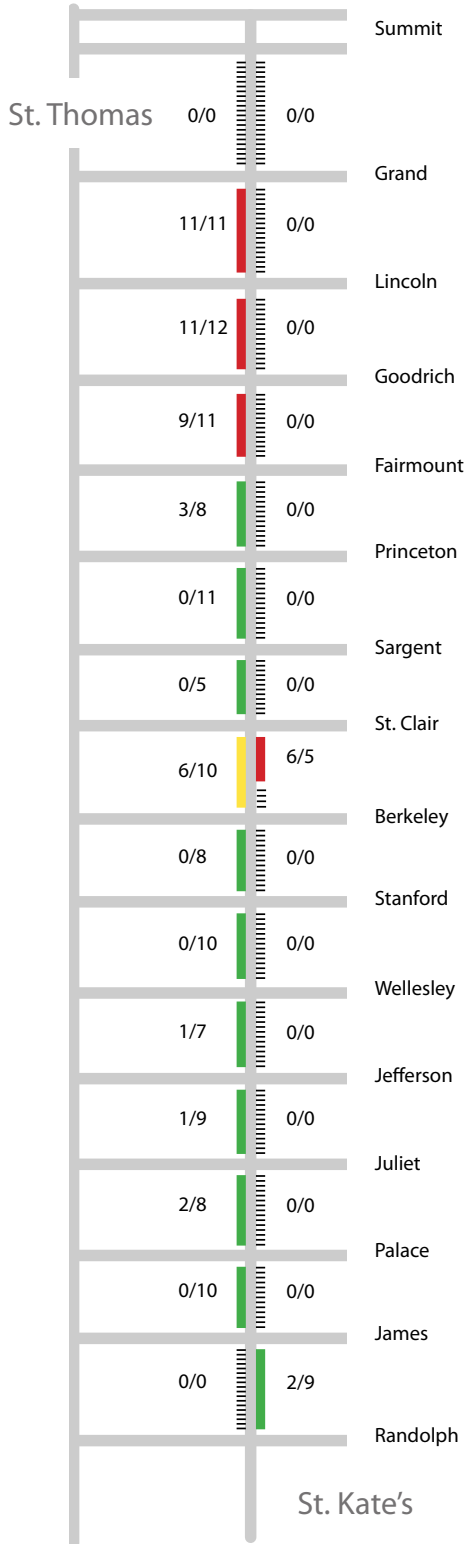
(Observed parking utilization may
exceed estimated legal capacity)

Cleveland Ave Parking Counts

Weekday Midday (11 AM - 1 PM)

Date: Thursday, March 19th
Time Period: 11 AM - 1 PM

Date: Tuesday, April 7th
Time Period: 11 AM - 1 PM



Legend

Observed Parking Utilization

- Signed "No Parking"
- 0 - 49%
- 50 - 74%
- 75 - 100+%

Example: 8/11 =
Observed Parked Cars /
Estimated Legal Parking Capacity

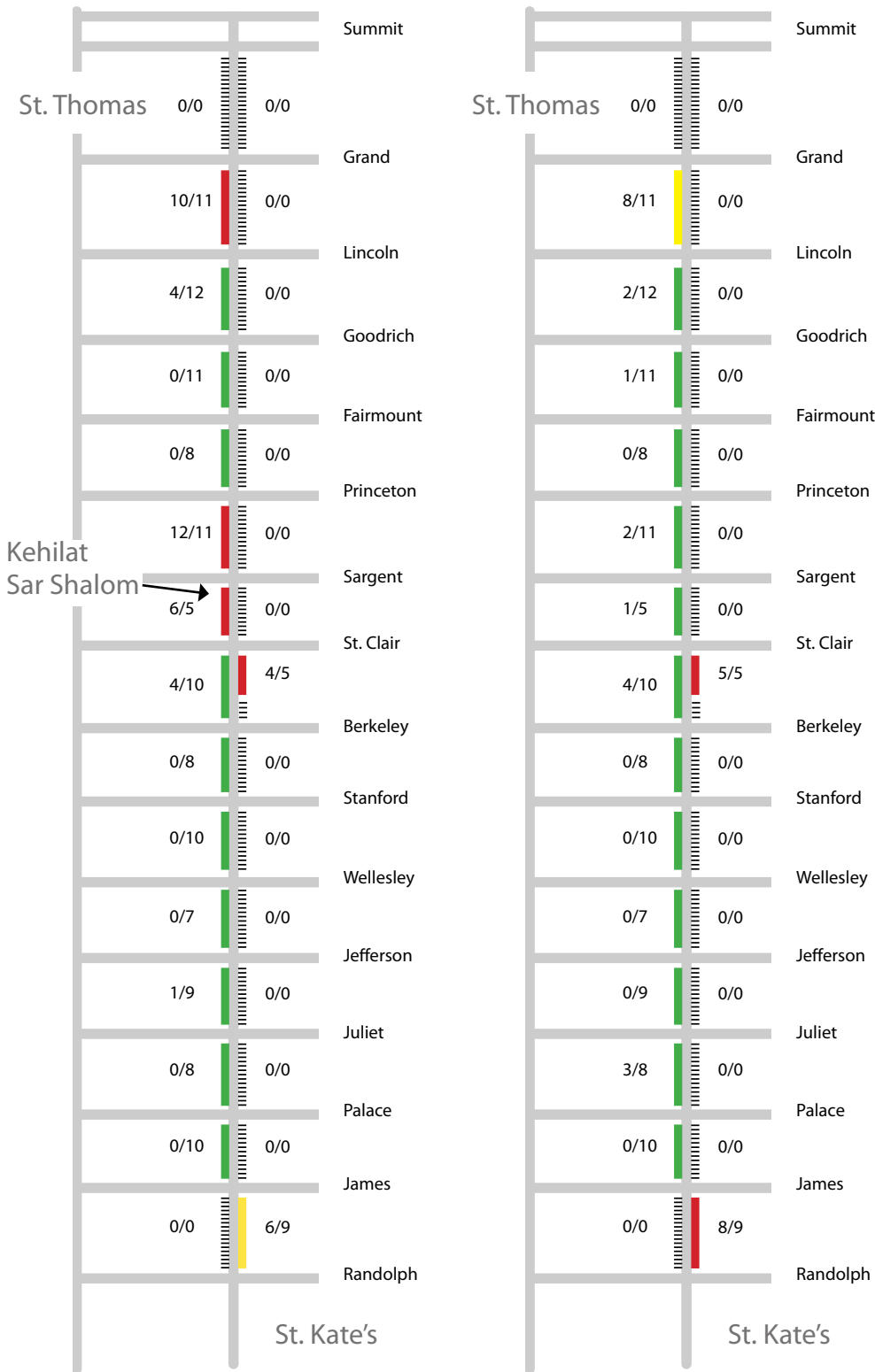
(Observed parking utilization may
exceed estimated legal capacity)

Cleveland Ave Parking Counts

Saturday Midday (11 AM - 1 PM) & Evening (6 PM - 8 PM)

Date: Saturday, March 28th
Time Period: 11 AM - 1 PM

Date: Saturday, March 28th
Time Period: 6 PM - 8 PM



Kehilat Sar Shalom →

APPENDIX

c. Cleveland at Myrtle Railroad Crossing Concept

Y:\TRAFFIC\LIGHTING\ANGWES\MY DOCUMENTS\CURRENT WORK\CLEVELAND\MYRTLE1.DWG 12/23/2015 8:18:28 AM



EXISTING AND REMOVAL



PROPOSED

DESIGNED	---	I HEREBY CERTIFY THAT THIS PLAN WAS PREPARED BY ME OR UNDER MY DIRECT SUPERVISION AND THAT I AM A DULY LICENSED PROFESSIONAL ENGINEER UNDER THE LAWS OF THE STATE OF MINNESOTA
DRAWN	---	
APPROVED	---	
SIGNATURE: _____		DATE: _____
_____		REG. NO. <u>XXXXXX</u>

PREPARED BY TRAFFIC ENGINEERING DIVISION FOR THE CITY OF ST. PAUL DEPARTMENT OF PUBLIC WORKS
CLEVELAND AVENUE BIKE LANES
 HIGHLAND PARKWAY TO UNIVERSITY AVENUE

CITY PROJECT NO. XX-T-XXXX	STATE AID PROJECT NO. XXX-XX-XXX	SHEET OF X
STATE PROJECT NO. XXXX-XX	DRAWING NO. XXXX-XX	
DATE: December 21, 2015		