

PROJECT No. 15-40-001

WD 1500001



1301 American Blvd. E. Suite 100  
Bloomington, MN 55425  
tel: (612) 879-6000  
www.kaswilson.com

Civil/Landscape:  
Soktion Blue  
318 Cedar St  
St Paul, MN 55101  
tel: (651) 294-0038  
soktionblue.com

Structural:

Mechanical/Plumbing:

Electrical:

The Villages at  
Frost-English  
(Family)

1955 English Street  
Maplewood, MN 55109  
Sherman Assoc. LLC  
233 Park Ave S  
Minneapolis, MN 55413  
(612) 332-3000  
www.sherman-associates.com

Project Number 1444

Date 01/02/2014

Drawn By LMM

Checked By RAT

NOT FOR  
CONSTRUCTION

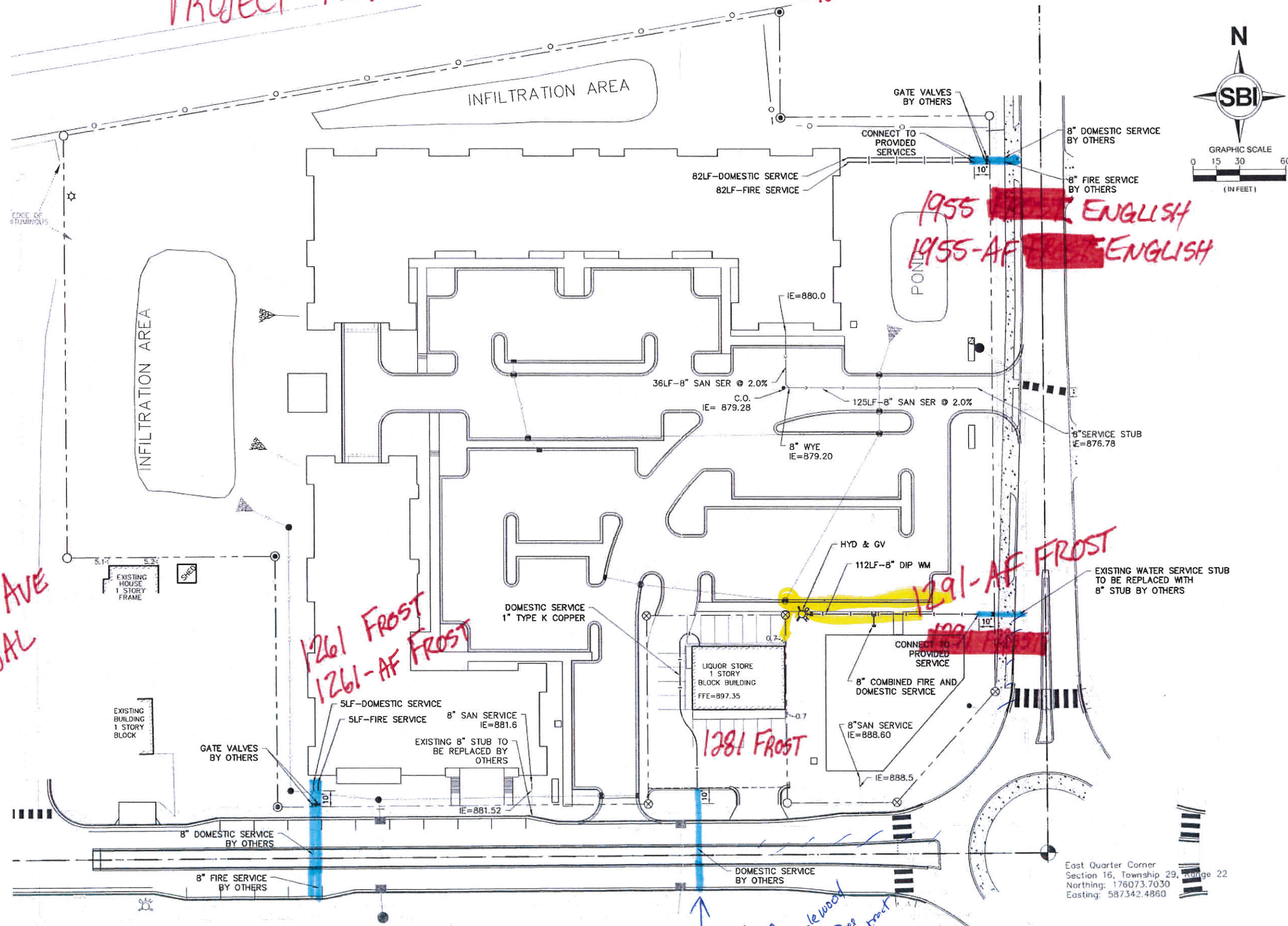
Date

Revision

Rev. No.

UTILITY PLAN

C800



1157 FROST AVE  
SEASONAL

1261 FROST  
1261-AF FROST

1955 ENGLISH  
1955-AF ENGLISH

1291-AF FROST

1281 FROST

new lig. stone line  
Cpl. for by Maplewood  
Acquisitions  
old lig. Stone Water Line

\* new line curves from English into Frost (South → West)

P:1144-Sherman-Maplewood-Frost-English-MHF\A\Media\1144-Sherman-Maplewood-Apartments.rvt  
Copyright Kas Wilson Architects  
11/26/2014 10:55:23 AM