

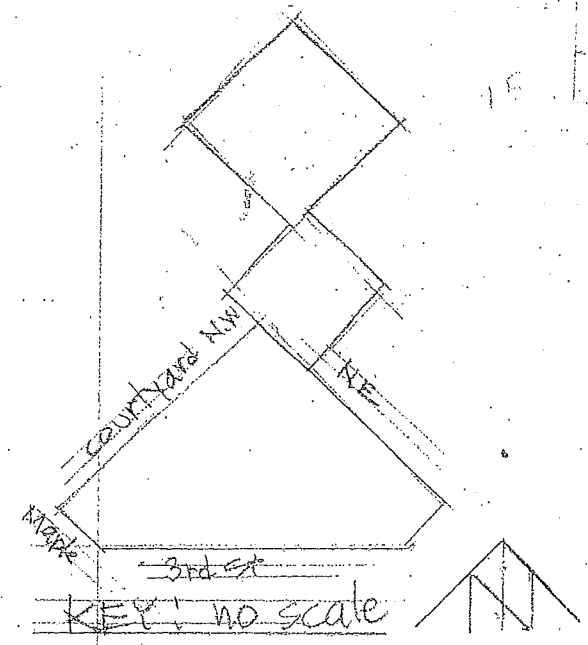
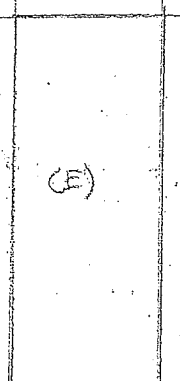
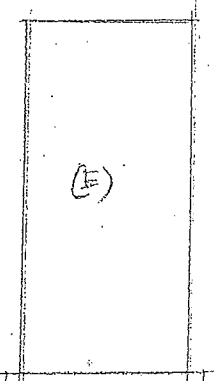
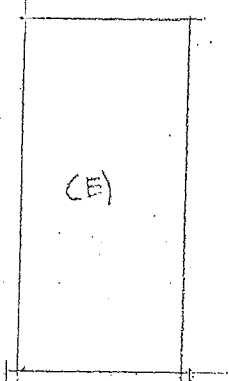
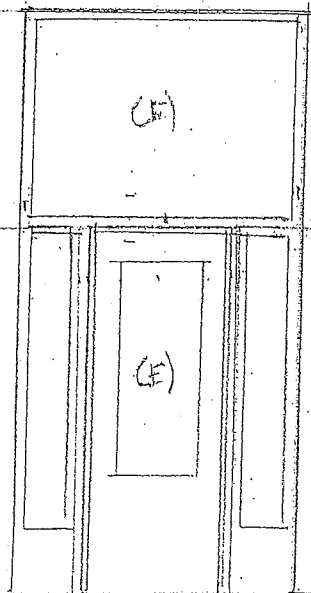
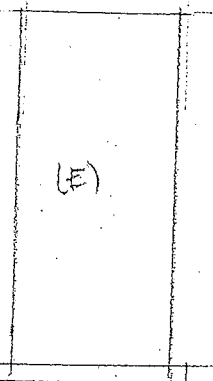
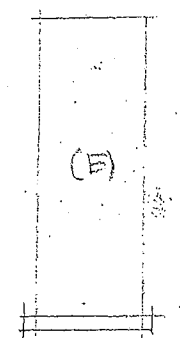
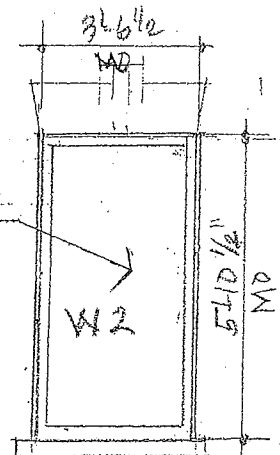
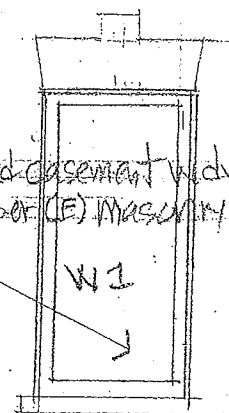
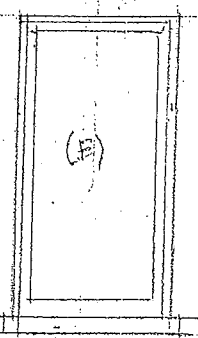
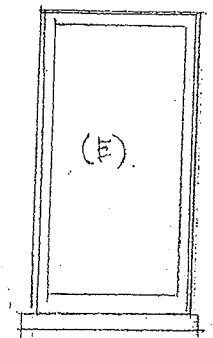
P. Pampet

relocated (E) clay tile cap

rebuilt parapet per (E) design w/ (N) brick complementing (E)

(N) random course w/ 1/2" projection

(N) clad casement window units sized per (E) masonry o/p.



SEPT 1, 2010
SEPT 1, 2010
SEPT 20, 2010

Huss Studio and Residence
300 Maple Street
Saint Paul, MN

Historic Saint Paul
Robert Roscoe
Design for Preservation

1401 East River Parkway
Minneapolis, Minnesota 55414
612-317-0989

SOUTH - THIRD STREET ELEVATION: 1/4" = 1'-0"

relocated clay tile cap, parapet
same as third of elev.

relocated (E) clay tile cap

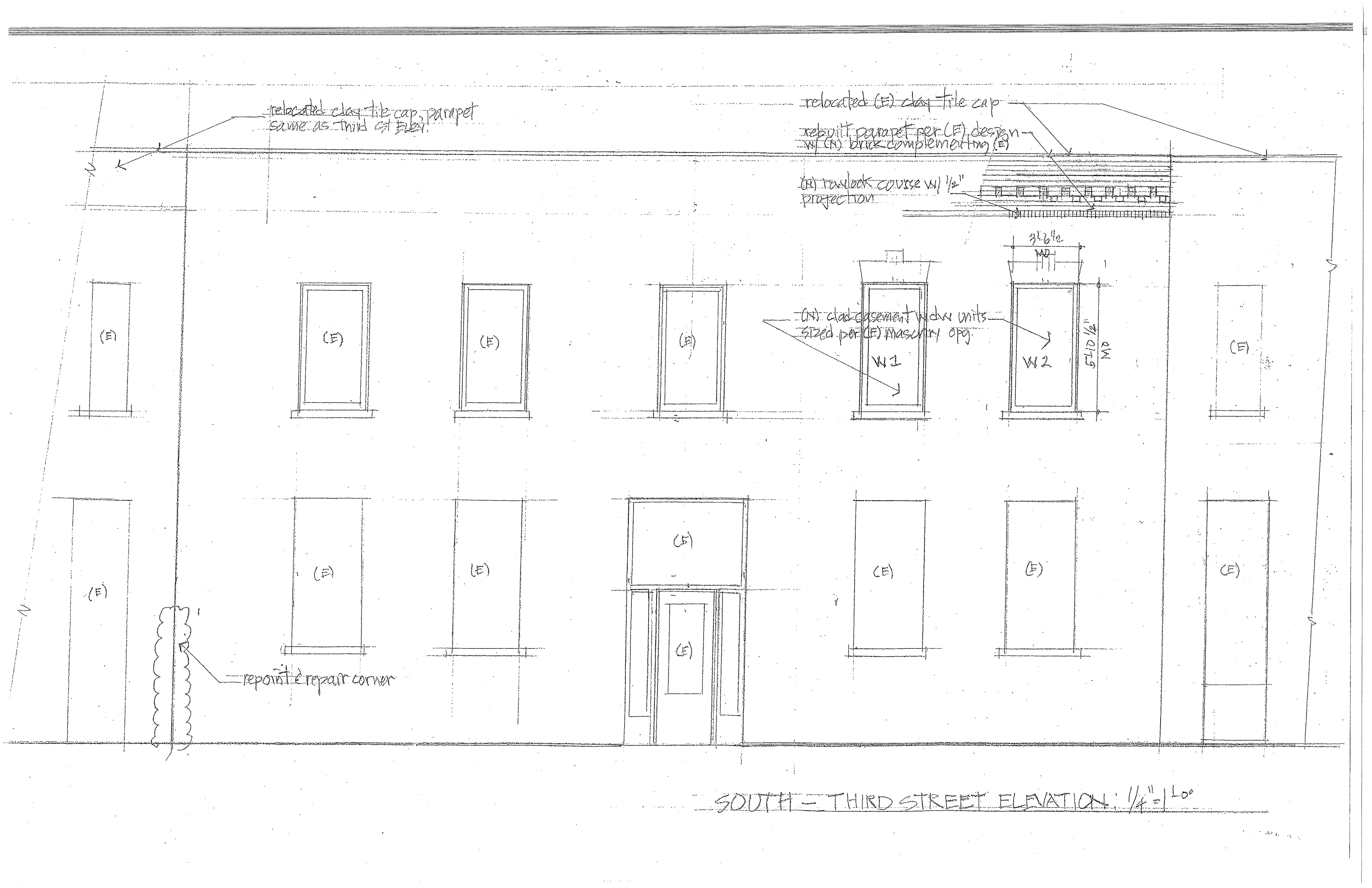
rebuild parapet per (E) design
w/ (A) brick complementing (E)

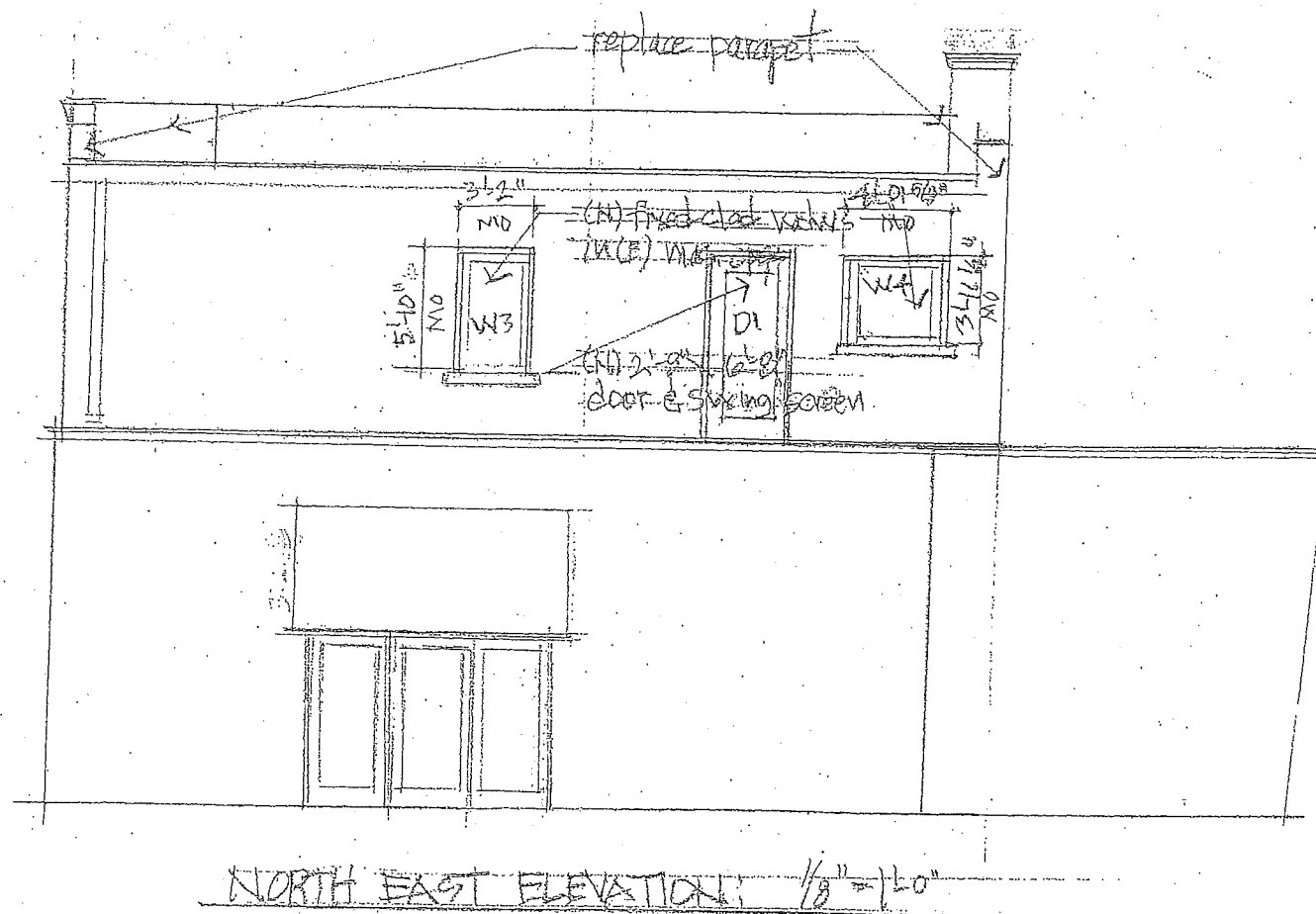
(A) rowlock course w/ 1/2"
projection

(A) clad casement window units
sized per (E) masonry opg.

repoint & repair corner

SOUTH - THIRD STREET ELEVATION: 1/4" = 1'00"



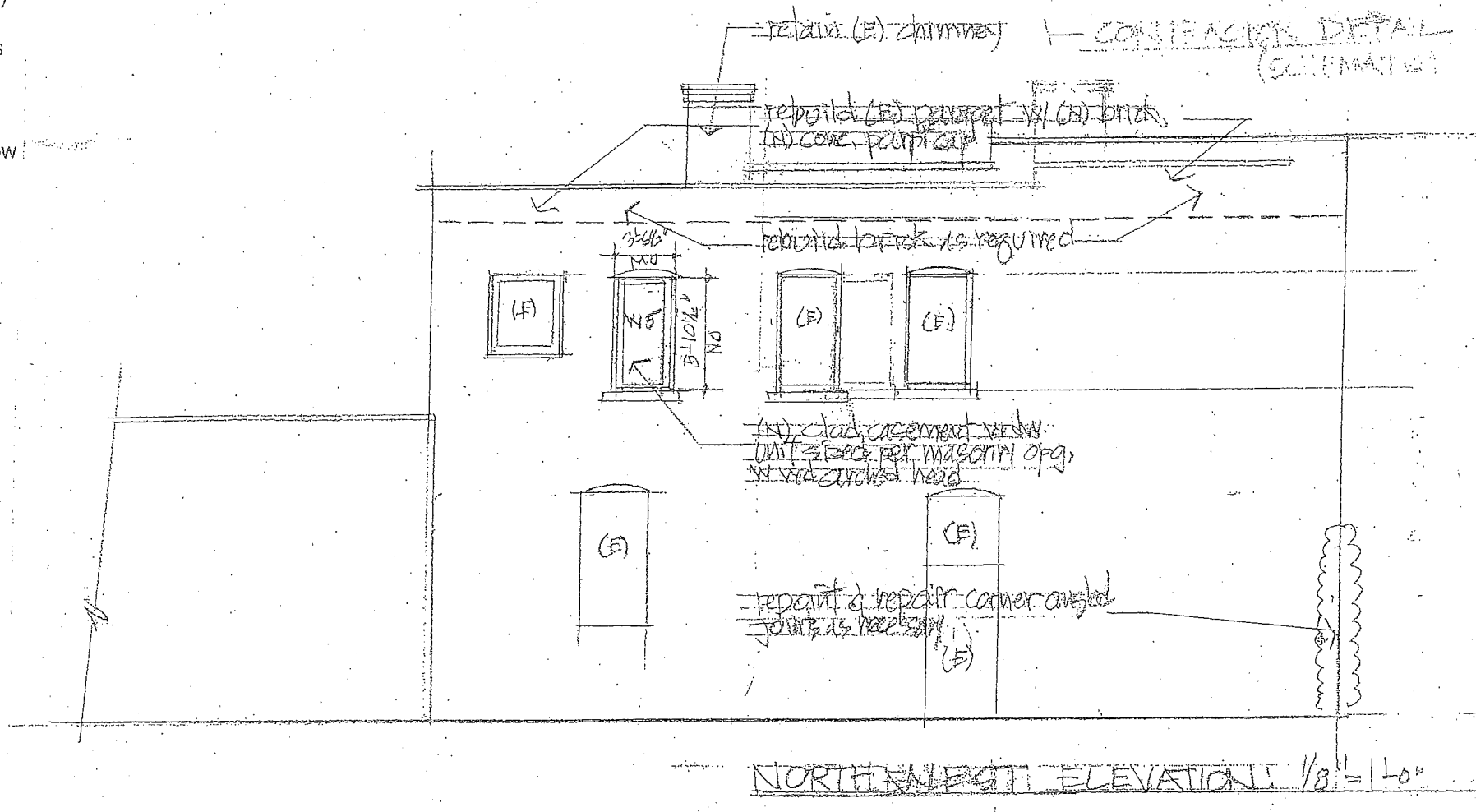


General Construction Notes:

1. Verify plan references with field measurements.
2. Replacement new windows to be installed at masonry openings where indicated on Elevations; other window units shall remain
3. Windows:
 - A. East Third Street (south) Elevation: install new casement operating units (2), Marvin or approved equal, custom-sized to fit existing masonry openings, clad type with insulating glazing
 - B. Northwest (courtyard) Elevation: install new casement fixed unit (1), Marvin or approved equal, custom-sized to fit existing masonry opening, clad type with insulating glazing
 - C. Northeast Elevation: Install new casement type fixed window units (2), Marvin or approved equal, custom-sized to fit existing openings, clad type with insulating glazing.
 - D. New window units shall receive flat 5/4 x 1 1/2" +- casing at jambs and heads, sized as necessary to extend from face of window frame to abut masonry opening jambs
 - E. Door at East Elevation: Install full-view type clad: Marvin or approved equal. With swinging screen unit
 - F. Parapet construction:
 1. Remove existing parapet down to roof level or as required to achieve solid wall integrity; retain existing clay tile for re-use; salvage removed brick capable of re-use.
 2. Build new parapets at (south) 3rd Street, Maple Street with new brick units selected for color to complement, but not needed to match, existing brick. Build rowlock course with new brick at selected coursing alignment to separate new parapet brickwork from existing brick walls. Rowlock units shall extend 1/2" +- from typical brick face.
 3. Northwest elevation: Build new parapet as described above, with new brick as supplied by mason which will be repainted as required, with 4" thick stone cap.
 - G. See spec and plan details for additional construction notes.
 - H. Repointing: perform repointing and repair at angled corner at Maple Street and East 3rd Street; perform repointing as required at other areas with 1% area allowance
 - I. Brick Dimensions:
 1. Existing: Third Street, Maple Street: 8 3/8" x 2 5/8"
 2. Proposed: Third Street, Maple Street: 7 5/8" x 2 5/16"
 3. Existing: Northwest: 7 5/8" x 2 5/16"
 4. Proposed: Northwest 7 5/8" x 2 5/16"

General Construction Notes:

1. Verify plan references with field measurements.
2. Replacement new windows to be installed at masonry openings where indicated on Elevations; other window units shall remain
3. Windows:
 - A. East Third Street (south) Elevation: install new casement operating units (2), Marvin or approved equal, custom-sized to fit existing masonry openings, clad type with insulating glazing
 - B. Northwest (courtyard) Elevation: install new casement fixed unit (1), Marvin or approved equal, custom-sized to fit existing masonry opening, clad type with insulating glazing
 - C. Northeast Elevation: Install new casement type fixed window units (2), Marvin or approved equal, custom-sized to fit existing openings, clad type with insulating glazing.
 - D. New window units shall receive flat 5/4 x 1 1/2" + - casing at jambs and heads, sized as necessary to extend from face of window frame to abut masonry opening jambs
 - E. Door at East Elevation: Install full-view type clad: Marvin or approved equal. With swinging screen unit
 - F. Parapet construction:
 1. Remove existing parapet down to roof level or as required to achieve solid wall integrity; retain existing clay tile for re-use; salvage removed brick capable of re-use.
 2. Build new parapets at (south) 3rd Street, Maple Street with new brick units selected for color to complement, but not needed to match, existing brick. Build rowlock course with new brick at selected coursing alignment to separate new parapet brickwork from existing brick walls. Rowlock units shall extend 1/2" +- from typical brick face.
 3. Northwest elevation: Build new parapet as described above, with new brick as supplied by mason which will be repainted as required, with 4" thick stone cap.
 - G. See spec and plan details for additional construction notes.
 - H. Repointing: perform repointing and repair at angled corner at Maple Street and East 3rd Street; perform repointing as required at other areas with 1% area allowance
 - I. Brick Dimensions:
 1. Existing: Third Street, Maple Street: 8 3/8" x 2 5/8"
 2. Proposed: Third Street, Maple Street: 7 5/8" x 2 5/16"
 3. Existing: Northwest: 7 5/8" x 2 5/16"
 4. Proposed: Northwest 7 5/8" x 2 5/16"



relocated clay tile cap
anchored to conc. cap
grout as required

pre-cast conc. cap
w/ 2 #4 rods anchored
to post beam

12" conc. block board beam
w/ 2 #4 rods continuous

(N) face brick anchored
w/ corrugated galv. ties

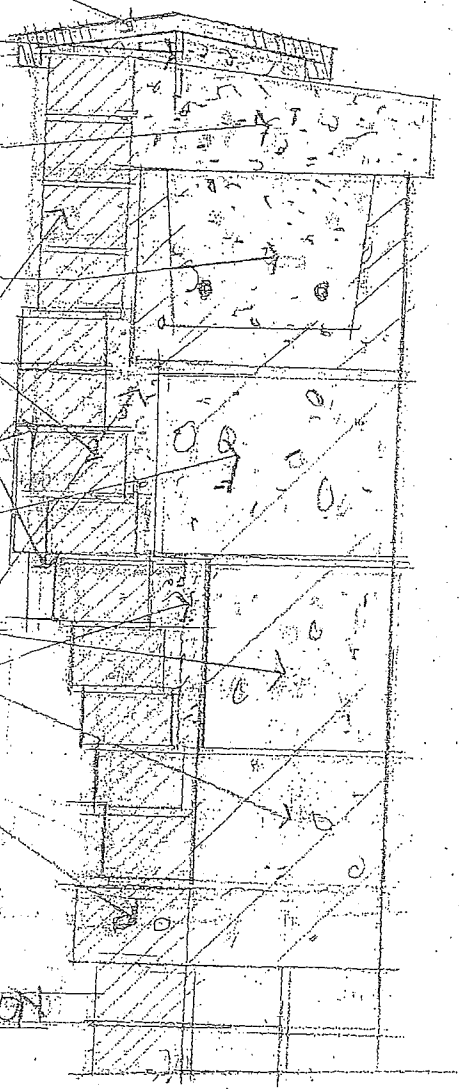
corbelled brick - see elev

10" conc. block

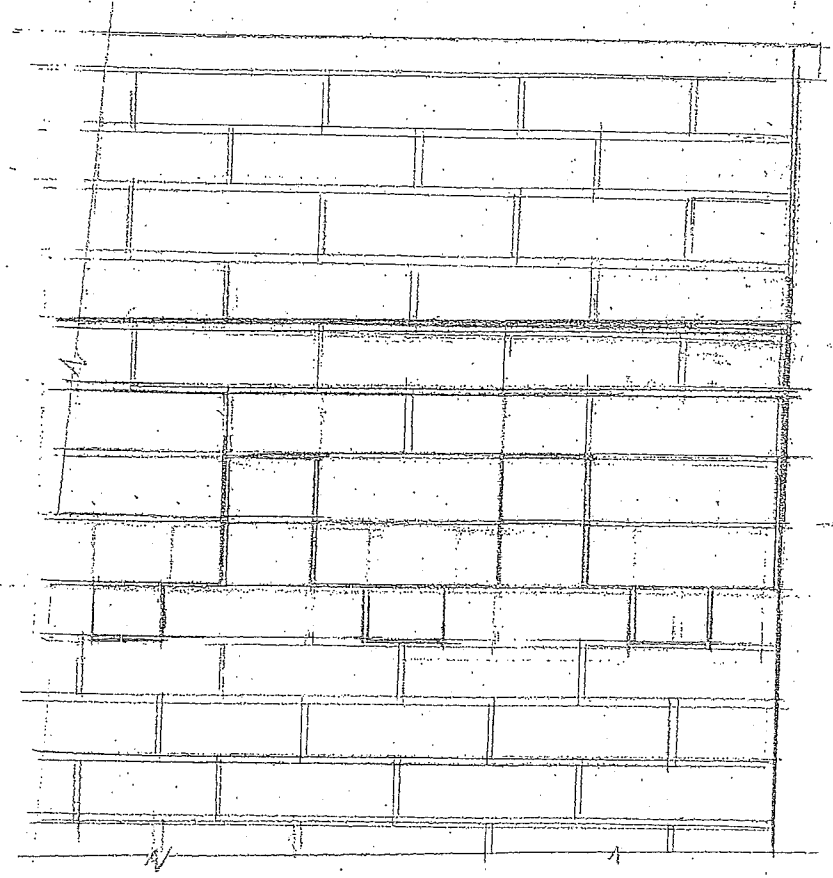
8" conc. block

conc. grout as required

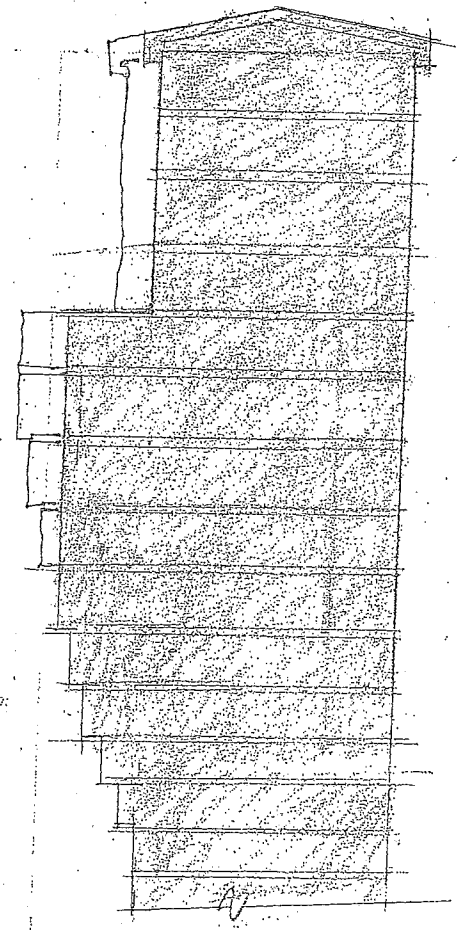
ranlock course w/
1/2" projection



PROPOSED PARAPET SECTION
1 1/2" = 1'-0"



PROPOSED PARTIAL ELEVATION
1 1/2" = 1'-0"



EXISTING PARAPET
1 1/2" = 1'-0" BUT

SEE PHOTO

SEPT 20, 2001

Huss Studio and Residence
300 Maple Street
Saint Paul, MN

Historic Saint Paul

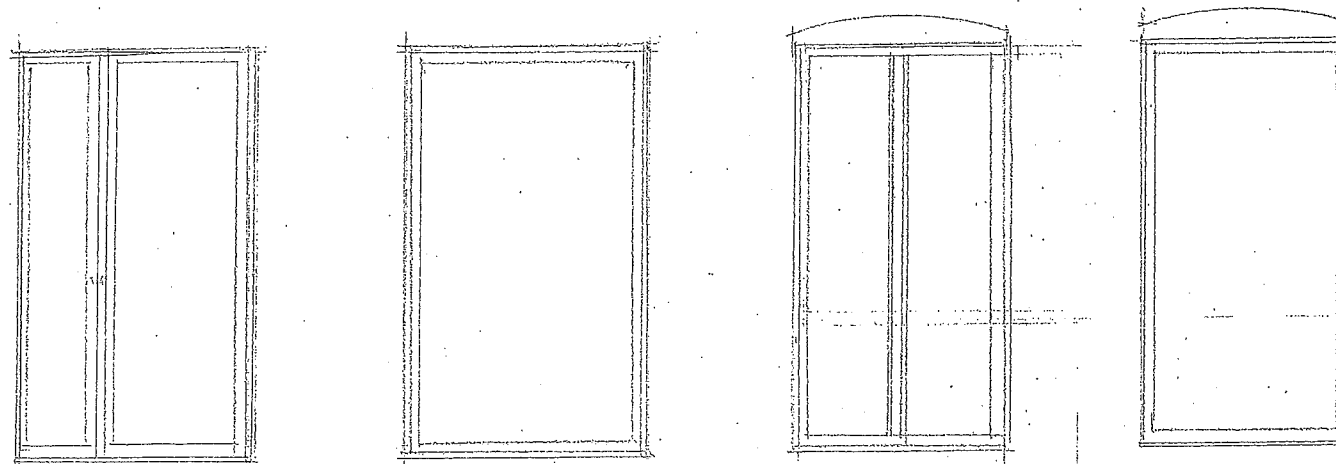
Robert Rosco
Design for Preservation

1401 East River Parkway
Minneapolis, Minnesota 554
612-317-09

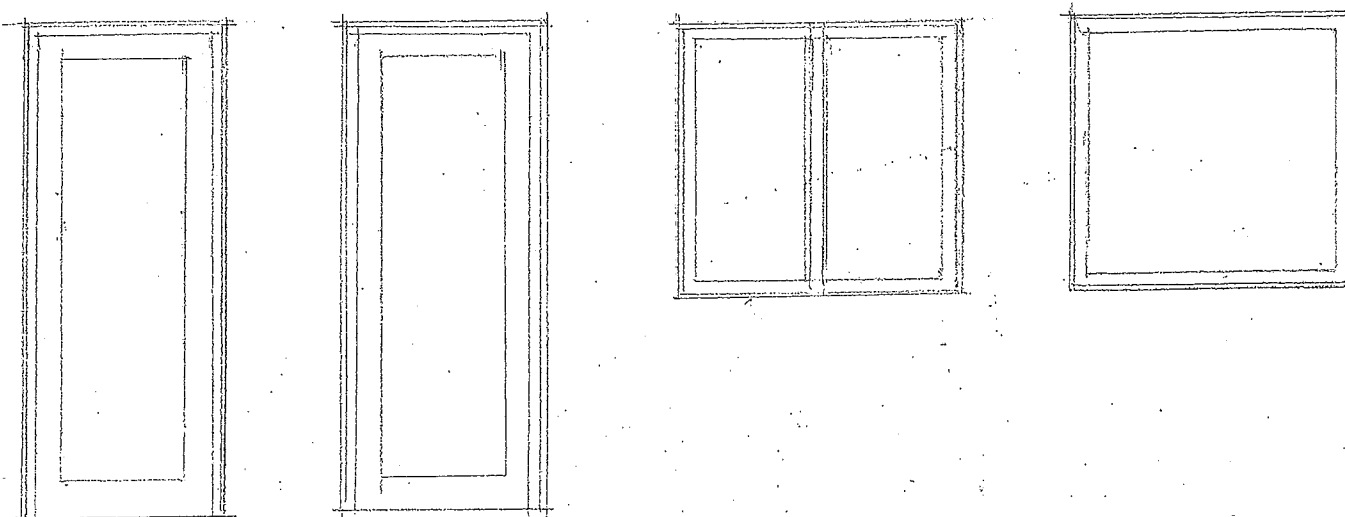
2
290

WINDOW / DOOR SCHEDULE

Window #	Location	Mfgr	#	Type	Remarks
W1, W2,	E 3 rd Street	Marvin	C UCA 40 x 70 1/2	Casement	
W3	NE elev	Marvin	C UCAP 4069 3/4	Casement	
D1 door	NE elev	Marvin	C UIFD 2868	Inswinging	
W4	NE elev	Marvin	C UCA 47 5/8x46 3/4	Fixed	
W5	NW elev	Marvin	CUCA 40 x 70 1/2	Casement	



W1, W2, W5 (E)
W1, W2, W5 (N)
W3 (E)
W3 (N)



D1 (E)
D1 (N)
W4 (E)
W4 (N)

3/8" = 1'-0"