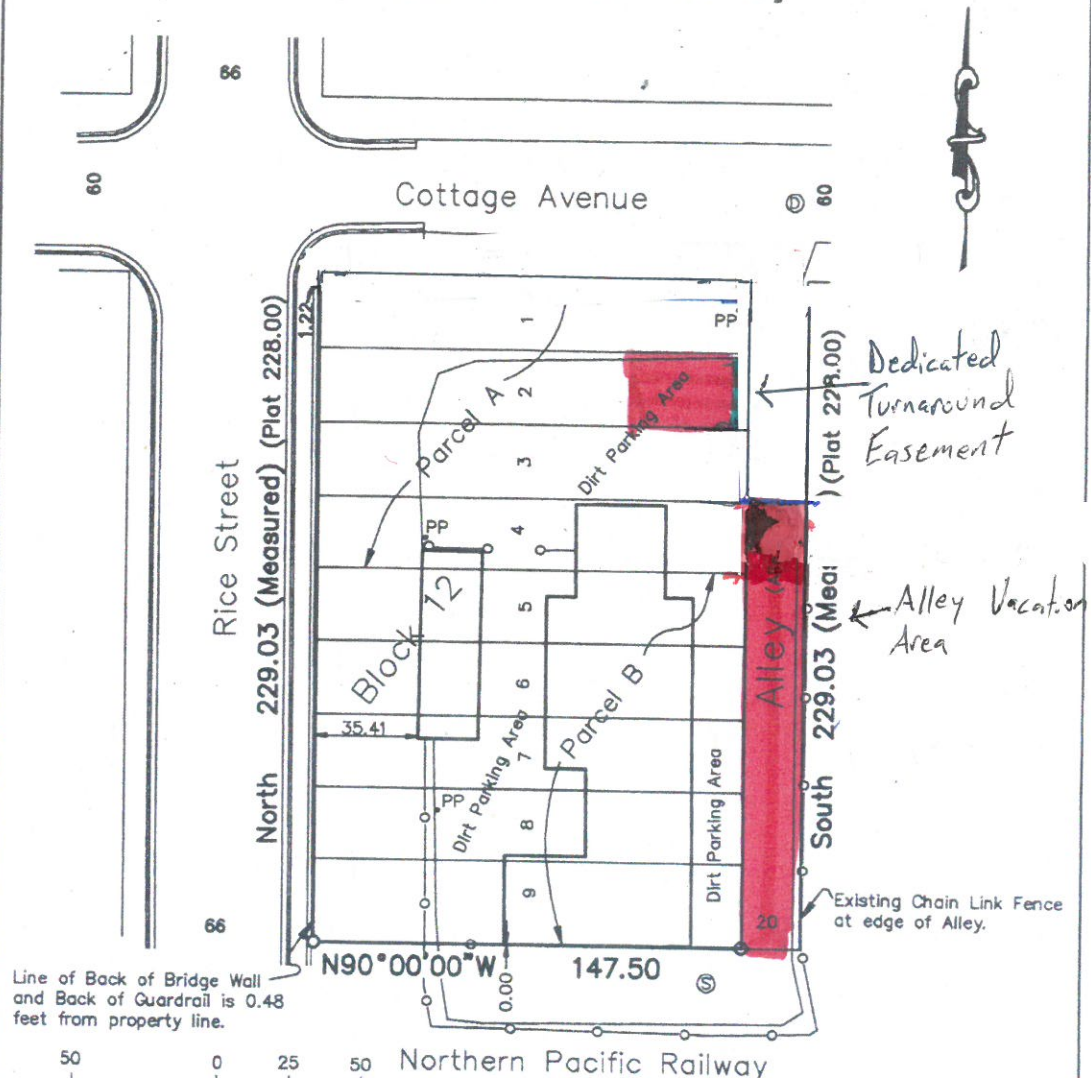
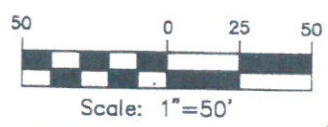


1360 Rice St. Alley Vacation

ALTA/ACSM Land Title Survey



Line of Back of Bridge Wall and Back of Guardrail is 0.48 feet from property line.



- Denotes Iron Monument Set (RLS 15612)
- Denotes Iron Monument Found
- PP • Power Pole
- Ⓧ Drainage Manhole
- Ⓢ Sanitary Manhole
- Chain Link Fence

Note: The Location of Property Corners is based on the found location of existing streets and justified by Long-term Lines of Occupation (fences.)

Mattke Surveying & Engineering, Inc.
 599 Hawthorn Road
 Lino Lakes, MN 55014
 763-783-0300
 email: mattkeeng@aol.com

To Community Resource Bank, and Bob Brackey:
 This is to certify that this map or plat and the survey on which it is based were made in accordance with the 2011 Minimum Standard Detail Requirements for ALTA/ACSM Land Title Surveys, jointly established and adopted by ALTA and NSPS, and includes items (none) of Table A thereof. The fieldwork was completed on October 4, 2012.

Tedd W. Mattke

Tedd W. Mattke, LS

Date: 10/4/2012 Minn. License No. 15612

Property Description:

Parcel A: Lots 1, 2, 3, 4, Block 12, Hager's Subdivision of Lots 1, 2, 3, 4, 5, 6, 7, 14, 15, 16, 17, and 18 of Walcott's Addition to Cottage Homes, Ramsey County, Minnesota
 Parcel B: Lots 5, 6, 7, 8, 9, Block 12, Hager's Subdivision of Lots 1, 2, 3, 4, 5, 6, 7, 14, 15, 16, 17, and 18 of Walcott's Addition to Cottage Homes, Ramsey County, Minnesota