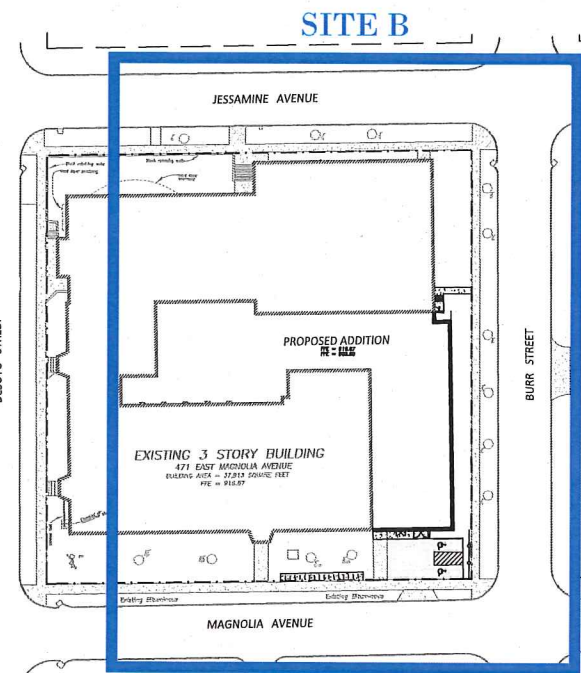
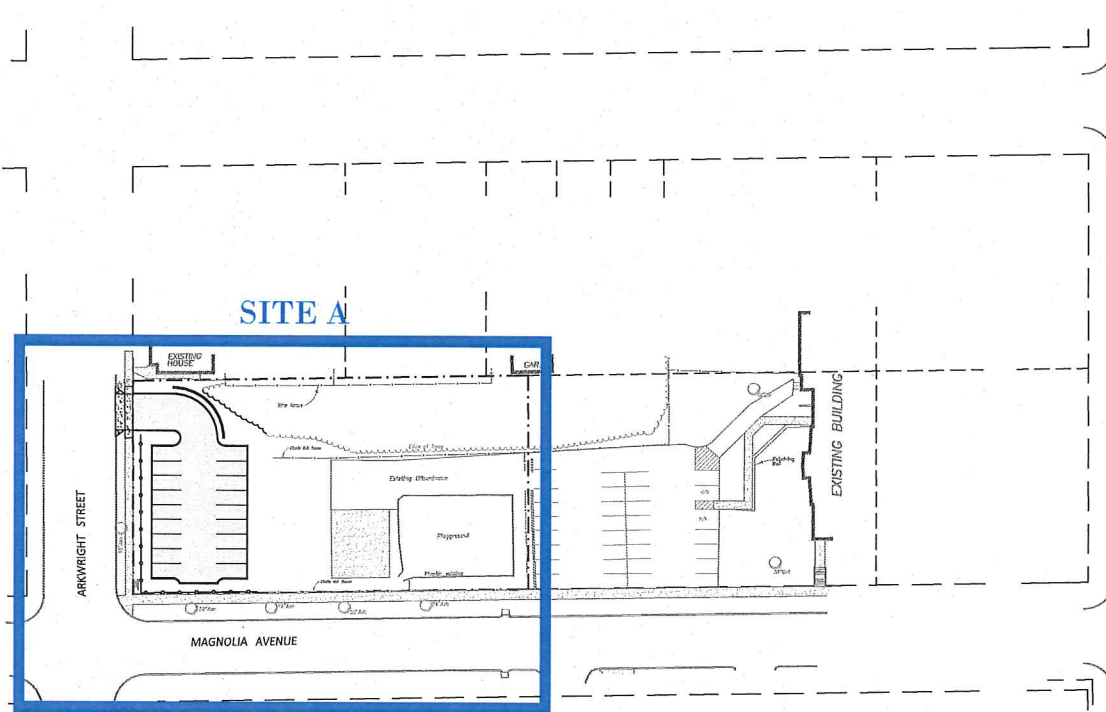


COMMUNITY OF PEACE ACADEMY

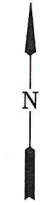
ST. PAUL, MINNESOTA

SITE DEMOLITION, SITE DIMENSION, GRADING, DRAINAGE, EROSION CONTROL & UTILITY PLAN



INDEX

TITLE SHEET	C0
SITE DEMOLITION PLAN	C1
SITE DIMENSION PLAN	C2
GRADING, DRAINAGE & EROSION CONTROL PLAN	C3
UTILITY PLAN	C4
DETAILS	C5



Rehder & Associates, Inc.
 Civil Engineers, Planners and Land Surveyors
 3440 Federal Drive, Suite 110 • Eden, Minnesota, 55122
 612-432-0851 • Fax: 612-432-8787 • email: info@rehder.com
 PROJECT NO.: 191-1989-021 DRAWING FILE: 1989021.DWG

I hereby certify that the plan was prepared by
 me or a duly Licensed Professional Engineer under
 my direct supervision and that I am a duly Licensed
 Professional Engineer under the laws of the State of Minnesota.
 Date: 8-2-19
 Name: Barton G. Egel Reg. No. 24392

ISSUED
 8/2/19
 1989021.DWG
 191-1989-021

TITLE SHEET
 COMMUNITY OF PEACE ACADEMY
 CITY OF ST. PAUL
 SHEET NUMBER
C0