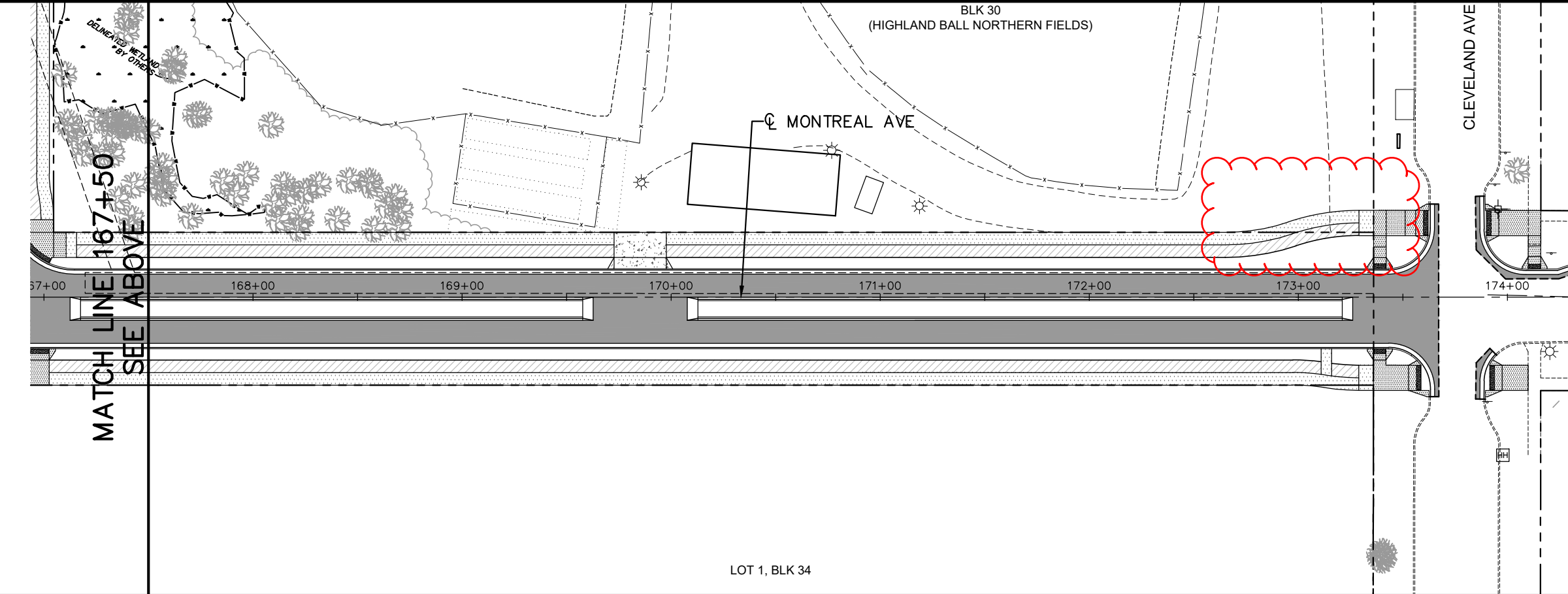
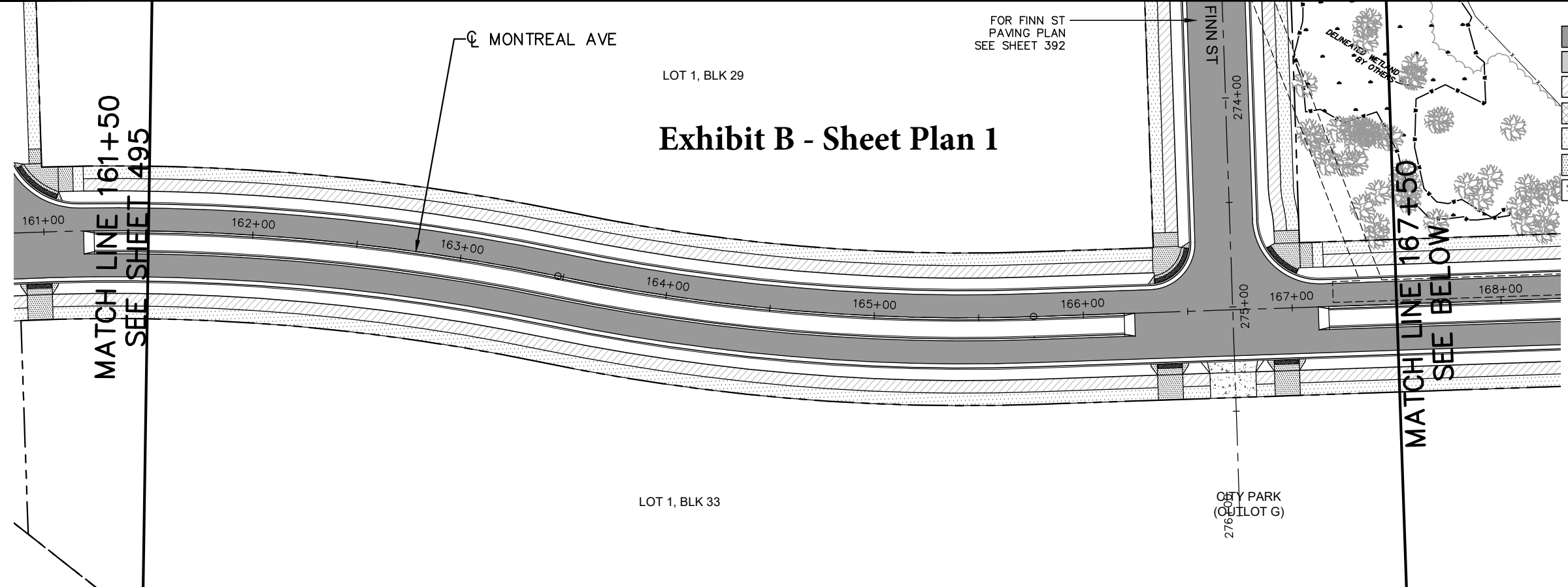
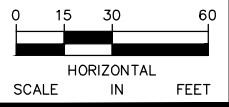


# Exhibit B - Sheet Plan 1

**LEGEND**

|  |                                  |
|--|----------------------------------|
|  | BITUMINOUS ROADWAY               |
|  | BITUMINOUS ROADWAY SECONDARY     |
|  | BITUMINOUS TRAIL                 |
|  | SHARED USE TRAIL                 |
|  | 4" CONCRETE WALK                 |
|  | 6" CONCRETE WALK (HEAVY DUTY)    |
|  | 8" CONCRETE ROADWAY AND DRIVEWAY |



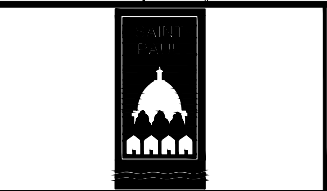
| No. | Date | Revisions |
|-----|------|-----------|
|     |      |           |
|     |      |           |
|     |      |           |

|      |                                      |
|------|--------------------------------------|
| App. | DRAWING NAME<br>Ford PavePlan EW.dwg |
|      | DESIGNED BY: RJG                     |
|      | DRAWN BY: RJG                        |
|      | CHECKED BY: GSB                      |
|      | DATE: 04/07/20                       |
|      | PROJECT NO. 160640016                |

**Kimley»Horn**  
 767 EUSTIS STREET, SUITE 100, ST. PAUL, MN 55114  
 PHONE: 651-645-4197  
 WWW.KIMLEY-HORN.COM

I HEREBY CERTIFY THAT THIS PLAN, SPECIFICATION OR REPORT WAS PREPARED BY ME OR UNDER MY DIRECT SUPERVISION AND THAT I AM A DULY LICENSED PROFESSIONAL ENGINEER UNDER THE LAWS OF THE STATE OF MINNESOTA.

GREGORY S. BROWN, PE  
 DATE: 04/07/20 MN LIC. NO. 22814



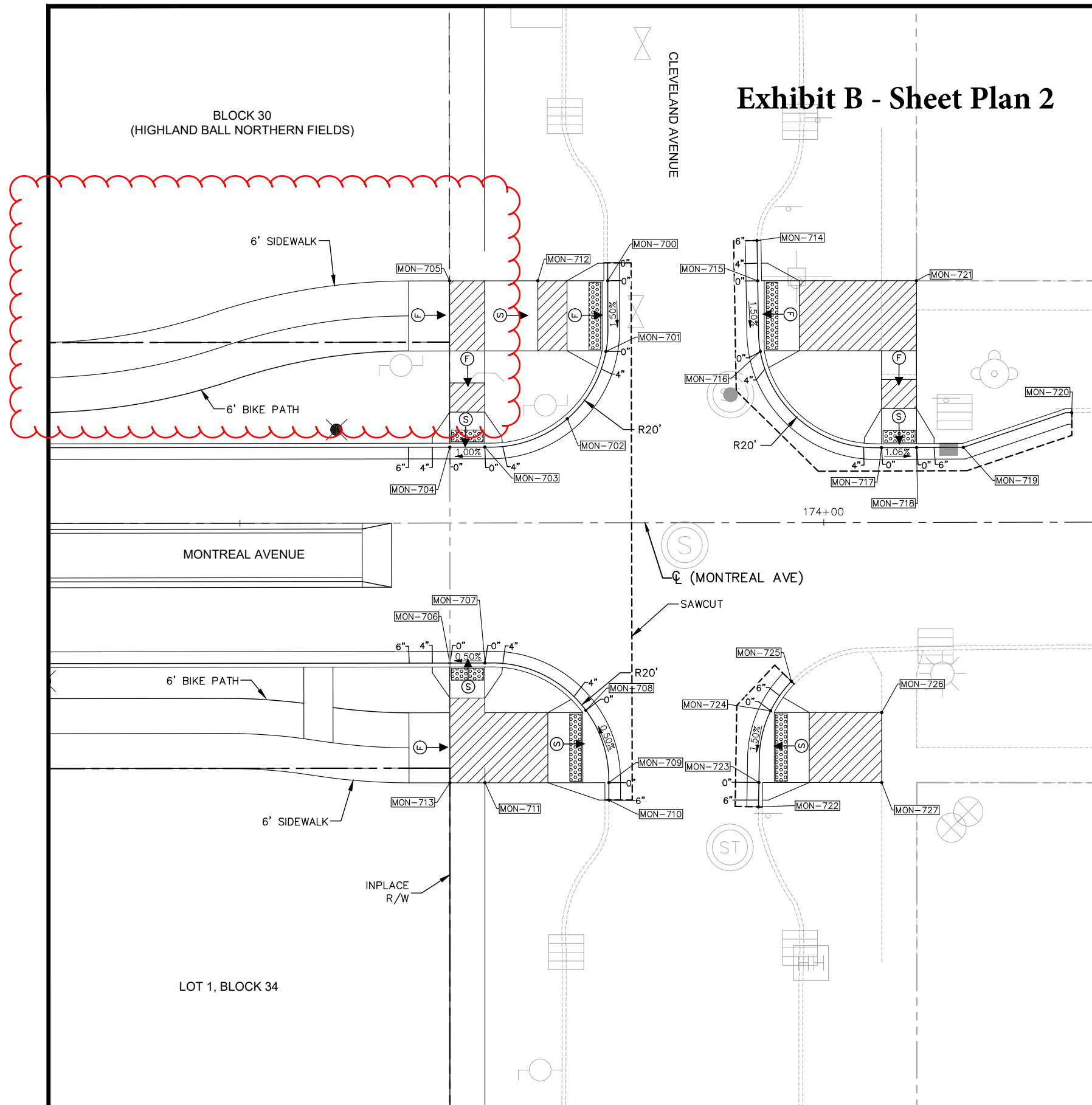
RYAN COMPANIES US, INC.  
 FORD SITE REDEVELOPMENT  
 CITY OF ST PAUL, MINNESOTA  
 SITE PLAN APPROVAL PLAN

MONTREAL AVE  
 PAVING PLAN  
 STA. 161+50 TO STA. 173+75.92

SHEET NO.  
**383**

**522**

# Exhibit B - Sheet Plan 2

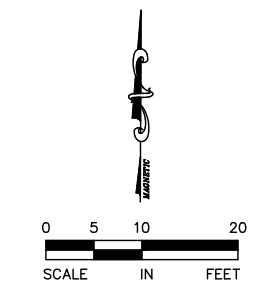


| LEGEND |   |
|--------|---|
| X"     | PROPOSED CURB HEIGHT  |
|        | LANDING AREA - 4'x4' MIN. DIMENSIONS AND MAX 2.0% SLOPE IN ALL DIRECTIONS   |
|        | TRUNCATED DOMES (SEE STANDARD PLATE 7038)   |
|        | INDICATES PEDESTRIAN RAMP - SLOPE SHALL BE BETWEEN 5.0% MINIMUM AND 8.3% MAXIMUM IN THE DIRECTION SHOWN AND CROSS SLOPE SHALL NOT EXCEED 2.0% |
|        | INDICATES PEDESTRIAN RAMP - SLOPE SHALL BE GREATER THAN 2.0% AND LESS THAN 5.0% IN THE DIRECTION SHOWN AND CROSS SLOPE SHALL NOT EXCEED 2.0%  |
|        | DRAINAGE FLOW ARROW   |
|        | PROPOSED MANHOLE  |
|        | PROPOSED CATCH BASIN  |
|        | PROPOSED HANDHOLES  |
|        | PEDESTRIAN RAMP CONTROL POINT   |

- NOTES:
- SEE SHEET 339 FOR MnDOT PEDESTRIAN STANDARD PLAN SHEETS
  - SEE SHEET 2 FOR GENERAL NOTES
  - OFFSETS, ELEVATIONS, AND TRUNCATED DOME DIMENSIONS ARE TO FLOWLINE OF GUTTER, WHERE APPLICABLE, AND DO NOT INCLUDE DRAINAGE SUMPS
  - SIDEWALK AND BLVD SLOPES MAY VARY FROM TYPICAL SECTIONS AT INTERSECTIONS AND PEDESTRIAN RAMP. SIDEWALK CROSS SLOPE ARROWS INDICATE INTENT, BUT CONTRACTOR SHALL ADJUST DESIGN AS NEEDED BASED ON FIELD CONDITIONS TO MAINTAIN ADA COMPLIANCE

| PEDESTRIAN RAMP POINTS TABLE |              |           |           |           |
|------------------------------|--------------|-----------|-----------|-----------|
| POINT NUMBER                 | ALIGNMENT    | STATION   | OFFSET    | ELEVATION |
| MON-700                      | MONTREAL AVE | 173+63.06 | 41.49' LT | 838.00    |
| MON-701                      | MONTREAL AVE | 173+62.73 | 29.36' LT | 837.82    |
| MON-702                      | MONTREAL AVE | 173+56.10 | 17.83' LT | 837.58    |
| MON-703                      | MONTREAL AVE | 173+41.96 | 13.00' LT | 837.31    |
| MON-704                      | MONTREAL AVE | 173+35.96 | 13.00' LT | 837.25    |
| MON-705                      | MONTREAL AVE | 173+35.96 | 41.49' LT | 838.18    |
| MON-706                      | MONTREAL AVE | 173+35.93 | 24.00' RT | 837.04    |
| MON-707                      | MONTREAL AVE | 173+41.93 | 24.00' RT | 837.07    |
| MON-708                      | MONTREAL AVE | 173+59.22 | 32.13' RT | 837.14    |
| MON-709                      | MONTREAL AVE | 173+63.13 | 44.53' RT | 837.07    |
| MON-710                      | MONTREAL AVE | 173+63.13 | 47.51' RT | 837.03    |
| MON-711                      | MONTREAL AVE | 173+41.90 | 44.52' RT | 837.56    |
| MON-712                      | MONTREAL AVE | 173+51.07 | 41.49' LT | 838.19    |
| MON-713                      | MONTREAL AVE | 173+35.90 | 44.51' RT | 837.65    |
| MON-714                      | MONTREAL AVE | 173+88.65 | 48.34' LT | 838.65    |
| MON-715                      | MONTREAL AVE | 173+88.75 | 41.43' LT | 838.54    |
| MON-716                      | MONTREAL AVE | 173+89.19 | 29.33' LT | 838.36    |
| MON-717                      | MONTREAL AVE | 174+09.92 | 12.81' LT | 837.86    |
| MON-718                      | MONTREAL AVE | 174+15.92 | 12.83' LT | 837.80    |
| MON-719                      | MONTREAL AVE | 174+23.92 | 12.85' LT | 837.73    |

| PEDESTRIAN RAMP POINTS TABLE |              |           |           |           |
|------------------------------|--------------|-----------|-----------|-----------|
| POINT NUMBER                 | ALIGNMENT    | STATION   | OFFSET    | ELEVATION |
| MON-720                      | MONTREAL AVE | 174+42.51 | 18.77' LT | 838.12    |
| MON-721                      | MONTREAL AVE | 174+15.94 | 41.42' LT | 838.78    |
| MON-722                      | MONTREAL AVE | 173+88.76 | 48.71' RT | 836.83    |
| MON-723                      | MONTREAL AVE | 173+88.83 | 44.54' RT | 836.89    |
| MON-724                      | MONTREAL AVE | 173+90.88 | 32.26' RT | 837.07    |
| MON-725                      | MONTREAL AVE | 173+94.44 | 27.22' RT | 837.16    |
| MON-726                      | MONTREAL AVE | 174+09.89 | 32.58' RT | 837.35    |
| MON-727                      | MONTREAL AVE | 174+09.88 | 44.57' RT | 837.49    |



| No. | Date | Revisions | App. | DRAWING NAME              |
|-----|------|-----------|------|---------------------------|
|     |      |           |      | Ford Plan IntDetail_B.dwg |
|     |      |           |      | DESIGNED BY: EST          |
|     |      |           |      | DRAWN BY: EST             |
|     |      |           |      | CHECKED BY: JLK           |
|     |      |           |      | DATE: 04/06/20            |
|     |      |           |      | PROJECT NO. 160640016     |



I HEREBY CERTIFY THAT THIS PLAN, SPECIFICATION OR REPORT WAS PREPARED BY ME OR UNDER MY DIRECT SUPERVISION AND THAT I AM A DULY LICENSED PROFESSIONAL ENGINEER UNDER THE LAWS OF THE STATE OF MINNESOTA.

GREGORY S. BROWN, PE  
DATE: 04/06/20 MN LIC. NO. 22814



RYAN COMPANIES US, INC  
FORD SITE REDEVELOPMENT  
CITY OF ST PAUL, MINNESOTA  
SITE PLAN APPROVAL PLAN

CLEVELAND AVE & MONTREAL AVE  
INTERSECTION DETAIL PLANS

SHEET NO.  
**367**

**522**