



STPAUL.GOV

**CITY OF SAINT PAUL**

**St. Paul City Council, Ward 6**



# Katlin Her

*City of Saint Paul, Ward 6 - Right Track Intern*

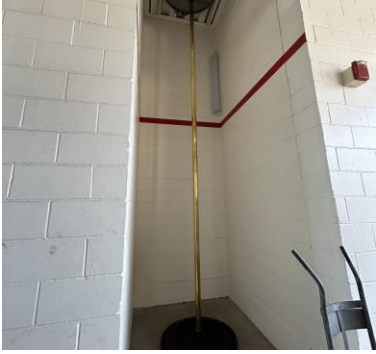
- ❖ Fifth year in Right Track
- ❖ Harding High School Grad, Class of 2023
- ❖ University of Minnesota – Twin Cities, Fall 2023



**SAINT PAUL**  
MINNESOTA

[Katlin.Her@ci.stpaul.mn.us](mailto:Katlin.Her@ci.stpaul.mn.us)

**STPAUL.GOV**



# My Summer Experience



Developed professional writing skills

Improved research skills

Gained understanding of systems and policies





STPAUL.GOV

**CITY OF SAINT PAUL**

# **The Misclassification of the Hmong Ethnic Group in the 2020 Census Data Products**



# A Call for Action

- ❖ In June, South East Asia Resource Action Center (SEARAC) reached out.
- ❖ Tasked to draft a letter to the White House Initiative on Asian Americans, Native Hawaiian, and Pacific Islanders (WHIAANHPI).





# Background

- ❖ In January 2023, “2020 Demographic and Housing Characteristics File A Proof of Concept” released for public feedback.
- ❖ In 2021, the “2020 Census State Redistricting File (Public Law 94-171) Summary File.”

<b>EAST ASIAN</b>	<b>4010-4099</b>
<b>East Asian</b>	<b>4010-4019</b>
East Asian	4010
<b>Chinese</b>	<b>4020-4039</b>
Chinese (Detailed Checkbox)	4020
Chinese	4021
Hakka	4022
Han	4023
Hong Kong	4024
Macanese	4025
Tibetan	4026
<b>Japanese</b>	<b>4040-4049</b>
Japanese (Detailed Checkbox)	4040
Japanese	4041
Okinawan	4042
Iwo Jiman	4043
<b>Korean</b>	<b>4050-4059</b>
Korean (Detailed Checkbox)	4050
Korean	4051
<b>Mongolian</b>	<b>4060-4069</b>
Mongolian	4060
<b>Taiwanese</b>	<b>4070-4079</b>
Taiwanese	4070
<b>Hmong</b>	<b>4080-4089</b>
Hmong	4080



# Why is this a Misclassification?

- ❖ Majority of Hmong-Americans have come from Southeast Asia.
- ❖ The Hmong identity is not tied to a geographic location.
- ❖ Our sociopolitical identity aligns more with Southeast Asia.





## #SoutheastAsian



"Due to the uprooting of our homes and violence from the effects of war, Hmong people have had huge educational, economic, and health setbacks."

**HOUA YANG**

#AccurateRepresentation

## #SoutheastAsian



"With the U.S. Census' current misclassification of the Hmong ethnic group, this will likely result in decades of false and misrepresented research findings involving the Hmong ethnic group and possibly skew any future research for the Asian regional group of East Asians."

**CAM YANG**

#AccurateRepresentation

## #SoutheastAsian



"As stateless people who have been constantly erased through history and having to find creative ways to preserve our history and culture, having us misclassified by the Census is a projection of history repeating itself."

**KALEB HAWJ**

#AccurateRepresentation



# Hmong/Asian American Organizations have been...

- ❖ Reaching out to the U.S Census Bureau.
- ❖ Asking for the support of more organizations and Hmong leaders.
- ❖ Spreading awareness in the community.





# Overview

## Content of My Letter

Main Points:

- Hmong people are Southeast Asian
- Misclassification equals misinformation
- Correction is urgent



# Questions?



**SAINT PAUL**  
MINNESOTA

[STPAUL.GOV](http://STPAUL.GOV)