

From the Desk of Thomas C Ernst

To: City of St Paul
Created by Pamela Ernst
Department of Public Works

Attention: Paul St. Martin and Elizabeth Stiffler

CC: K. Lantry, D. Bostrom, M. Carter III, P. Harris, L. Helgen, R. Stark, D. Thune
I. Landrum

Subject: Chatsworth "Area 3" Permit Parking north of Summit

The attached "Summary and Request" (one page, two sided) is all you need to read in order to understand the subject, which is on the City Council Agenda for this Wednesday.

The complete report, which consists of eight two sided pages, includes many pictures. Both the pictures and the detail in this report show the justification for keeping Chatsworth St an "Area 3" permitted residential area.

But we repeat, if you're short of time, please at least read the "Summary and Request".

Sincerely,



Thomas C Ernst

Chatsworth St “Area 3” Permit Parking Summary

- The City of St Paul has designated selected residential neighborhoods for protection from excessive congestion and hazardous traffic and to preserve the character of those districts as residential districts for the safety of its citizens by restricting intense nonresident users (Title IV – Parking, Section 168).
- The City has identified the Wm Mitchell COL area as having excessive congestion and hazardous traffic. The residential streets in close proximity to WM COL have been designated as restricted parking. This has had the desired effect of increasing citizen safety and preserving the residential district from nonresident users excessive congestion. (Title IV Parking, Section 166.11).
- Chatsworth St from Summit to Portland was identified as a residential side street effected by the WM COL excessive congestion. The “Area 3” permitting was extended to Chatsworth and has had the desired effect of returning it to a safer environment and residential district, side street.
- The College Club at 990 Summit Ave has complained that with Chatsworth’s parking restriction they are inconvenienced. Their valet parkers and nonresidential guests can no longer use this residential side street as their parking lot.
- Summit Ave (where they’re located) is unrestricted, and many parking spaces go unused (Summit between Milton and Lexington) even during their busiest events. There is sufficient parking available to them on Summit, especially west of Oxford, but they the don’t want to walk one block and would prefer to use the residential street since it is slightly closer.
- The pressure felt by the College Club is exacerbated by the fact that they don’t have sufficient “off street” parking for their business. This results in a large number of nonresident users. Their valet parkers and guests have been accustomed to using Chatsworth as their parking lot. Along with WM COL parkers, this has turned Chatsworth into a congested and hazardous side street (see picture).
- The College Clubs busiest day is Tuesdays due to their regular weekly meetings. The neighborhood group suggested alternatives to help the College Club recover some of the parking on Chatsworth, but the College Club refused to discuss any compromises.
- The neighborhood groups simple suggestion of **covering the signs on one side of the street on Tuesdays** meets all needs and is the fairest solution. In spite of the College Clubs refusal to compromise with the neighbors, we still tried to provide them with a fair solution. They actually should not be allowed to return this residential side street into their business parking lot. Keep it RESIDENTIAL.
- Even though sufficient parking is available on unregulated Summit Ave for the College Clubs needs, the homeowners and residents bordering Chatsworth still feel Tuesday “sign bags” is a fair compromise and the lowest cost alternative.. **Please approve this solution.**

Request of the St Paul City Council

The neighborhood group asks the City Council to honor the City Municipal Code, Title IV, Section 168 and 166, by **keeping the block of Chatsworth between Summit and Portland an "Area 3" permitted area on both sides of the street.** Being an "Area 3" zone has solved the problem of severe nonresidential use which had caused unsafe and hazardous conditions on this residential side street. There is no need to change the streets "Area 3" designation since sufficient parking is available on unrestricted Summit Ave.

In the spirit of being good neighbors, we would like to further request that the City **allow the College Club to use "sign bags" to cover the No Parking – Area 3 signs on the east side of this Chatsworth block, on Tuesdays.** This will help alleviate what they claim is a long way for their valet parkers to have to walk.

Please help protect your citizens by not changing the permitting on this block and having it revert to unsafe and hazardous conditions.

Thank you.

Chatsworth St “Area 3” Permit Parking Summary

- The City of St Paul has designated selected residential neighborhoods for protection from excessive congestion and hazardous traffic and to preserve the character of those districts as residential districts for the safety of its citizens by restricting intense nonresident users (Title IV – Parking, Section 168).
- The City has identified the Wm Mitchell COL area as having excessive congestion and hazardous traffic. The residential streets in close proximity to WM COL have been designated as restricted parking. This has had the desired effect of increasing citizen safety and preserving the residential district from nonresident users excessive congestion. (Title IV Parking, Section 166.11).
- Chatsworth St from Summit to Portland was identified as a residential side street effected by the WM COL excessive congestion. The “Area 3” permitting was extended to Chatsworth and has had the desired effect of returning it to a safer environment and residential district, side street.
- The College Club at 990 Summit Ave has complained that with Chatsworth’s parking restriction they are inconvenienced. Their valet parkers and nonresidential guests can no longer use this residential side street as their parking lot.
- Summit Ave (where they’re located) is unrestricted, and many parking spaces go unused (Summit between Milton and Lexington) even during their busiest events. There is sufficient parking available to them on Summit, especially west of Oxford, but they the don’t want to walk one block and would prefer to use the residential street since it is slightly closer.
- The pressure felt by the College Club is exacerbated by the fact that they don’t have sufficient “off street” parking for their business. This results in a large number of nonresident users. Their valet parkers and guests have been accustomed to using Chatsworth as their parking lot. Along with WM COL parkers, this has turned Chatsworth into a congested and hazardous side street (see picture).
- The College Clubs busiest day is Tuesdays due to their regular weekly meetings. The neighborhood group suggested alternatives to help the College Club recover some of the parking on Chatsworth, but the College Club refused to discuss any compromises.
- The neighborhood groups simple suggestion of **covering the signs on one side of the street on Tuesdays** meets all needs and is the fairest solution. In spite of the College Clubs refusal to compromise with the neighbors, we still tried to provide them with a fair solution. They actually should not be allowed to return this residential side street into their business parking lot. Keep it RESIDENTIAL.
- Even though sufficient parking is available on unregulated Summit Ave for the College Clubs needs, the homeowners and residents bordering Chatsworth still feel **Tuesday “sign bags”** is a fair compromise and the lowest cost alternative.. **Please approve this solution.**

**City of St Paul Municipal Code: Title IV - Parking
Section 168. - Residential Permit Parking—Guidelines and Regulations.**

“The council of the City of Saint Paul finds that there are residential areas within the City of Saint Paul which are adjacent to or very near intense nonresidential users which do not provide adequate off-street parking”.

- **Section 168 Bullet Points:**
- The City Council further finds that persons using those nonresidential facilities frequently park their vehicles on nearby residential streets, resulting in serious residential problems.
- Reduce hazardous traffic conditions resulting from the heavy usage of these residential streets by nonresidents or transients .
- Promote safety of children and pedestrians.
- Preserve the general health, safety, welfare and integrity of those residents and residential areas.
- Preserve the character of those districts as **residential districts**

Area 3 Parking Restriction for Chatsworth St

(Between Summit and Portland)

Based on Chapter 168, 100% of the homeowners requested that the City take action in extending the Area 3 permit parking from Portland Ave onto Chatsworth St.

City study determined that there was extreme parking congestion and traffic on this block mainly caused by student population from Wm Mitchell COL and other nonresidential users.

Independent report confirmed extreme parking congestion preventing the homeowners, residents and their visitors from being able to park in the area, and being subjected to unsafe conditions for this residential district.

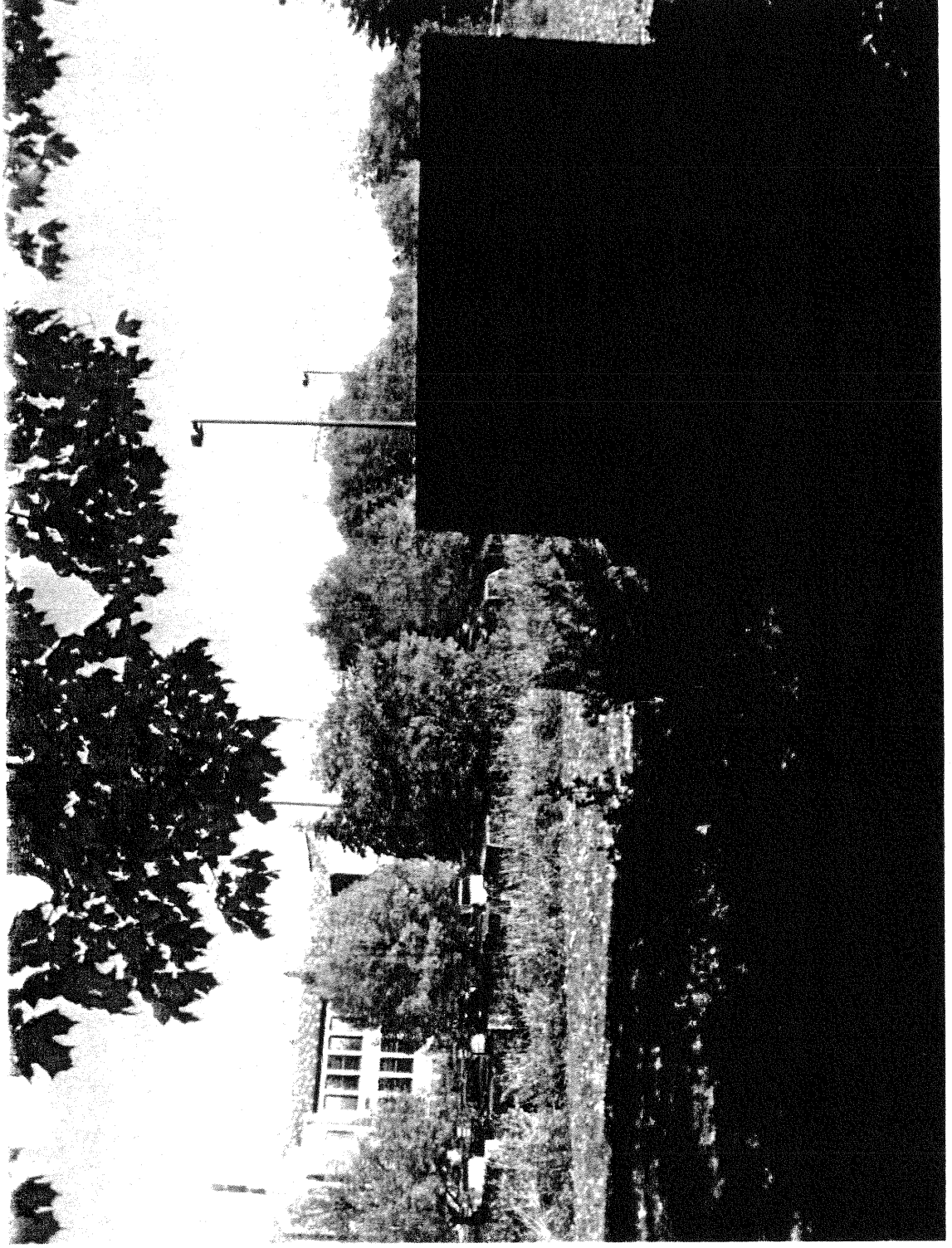
Public notification was released on January 6th notifying the general public that the subject would be on the next Council Meeting Agenda.

The council of the City of Saint Paul designated Chatsworth St as "Area 3" permit parking at the January 19, 2011 City Council Meeting.

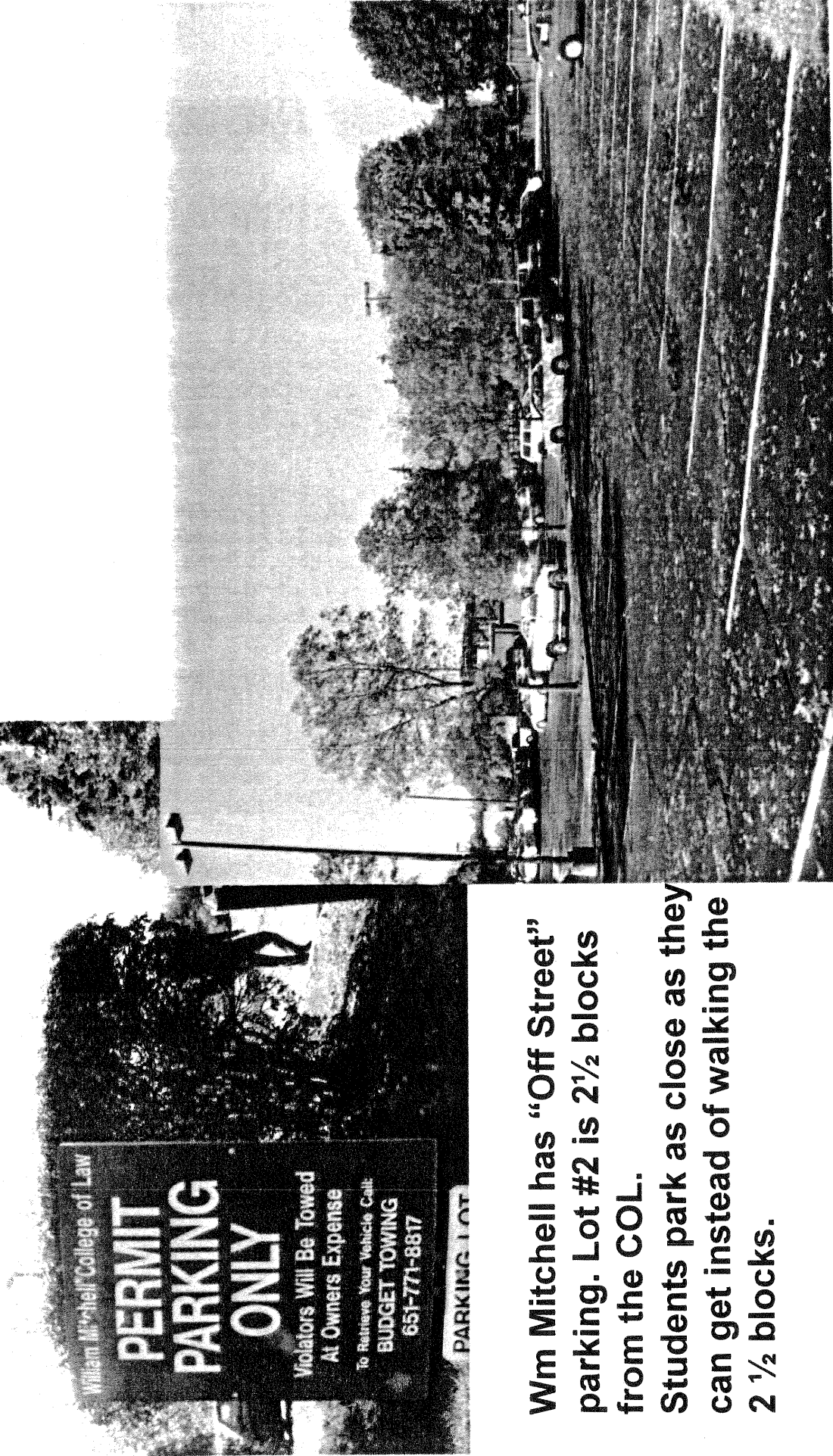
Intense Nonresidential Users affecting Chatsworth – From Summit to Portland

1. Wm Mitchell College of Law
2. Grand Ave businesses.
3. College Club

1. Wm Mitchell main parking lot

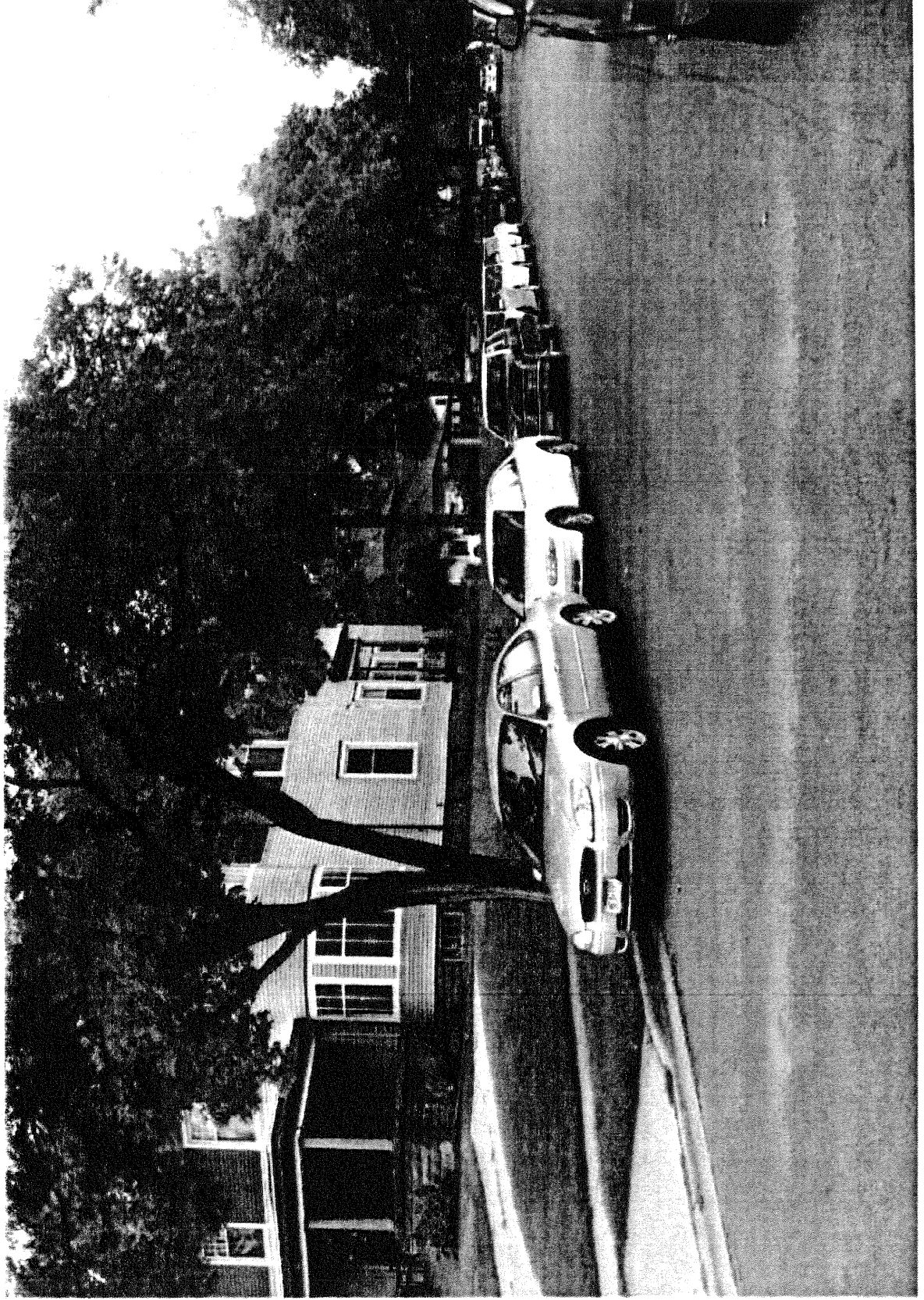


Wm Mitchell Auxiliary Parking Lot #2, is underused as students choose closer parking on Chatsworth St.



Wm Mitchell has "Off Street" parking. Lot #2 is 2½ blocks from the COL. Students park as close as they can get instead of walking the 2 ½ blocks.

The End Result was chronic parking congestion on Chatsworth between Summit and Portland during the Wm Mitch school year.



Title IV, Sec. 166.11. - Declaration of purpose.

The council of the City of Saint Paul finds that the residential area adjacent to or near the **William Mitchell College of Law** does not have sufficient off-street parking to safely accommodate the residential parking needs of the residents, and the parking needs of nonresidents using this institution.

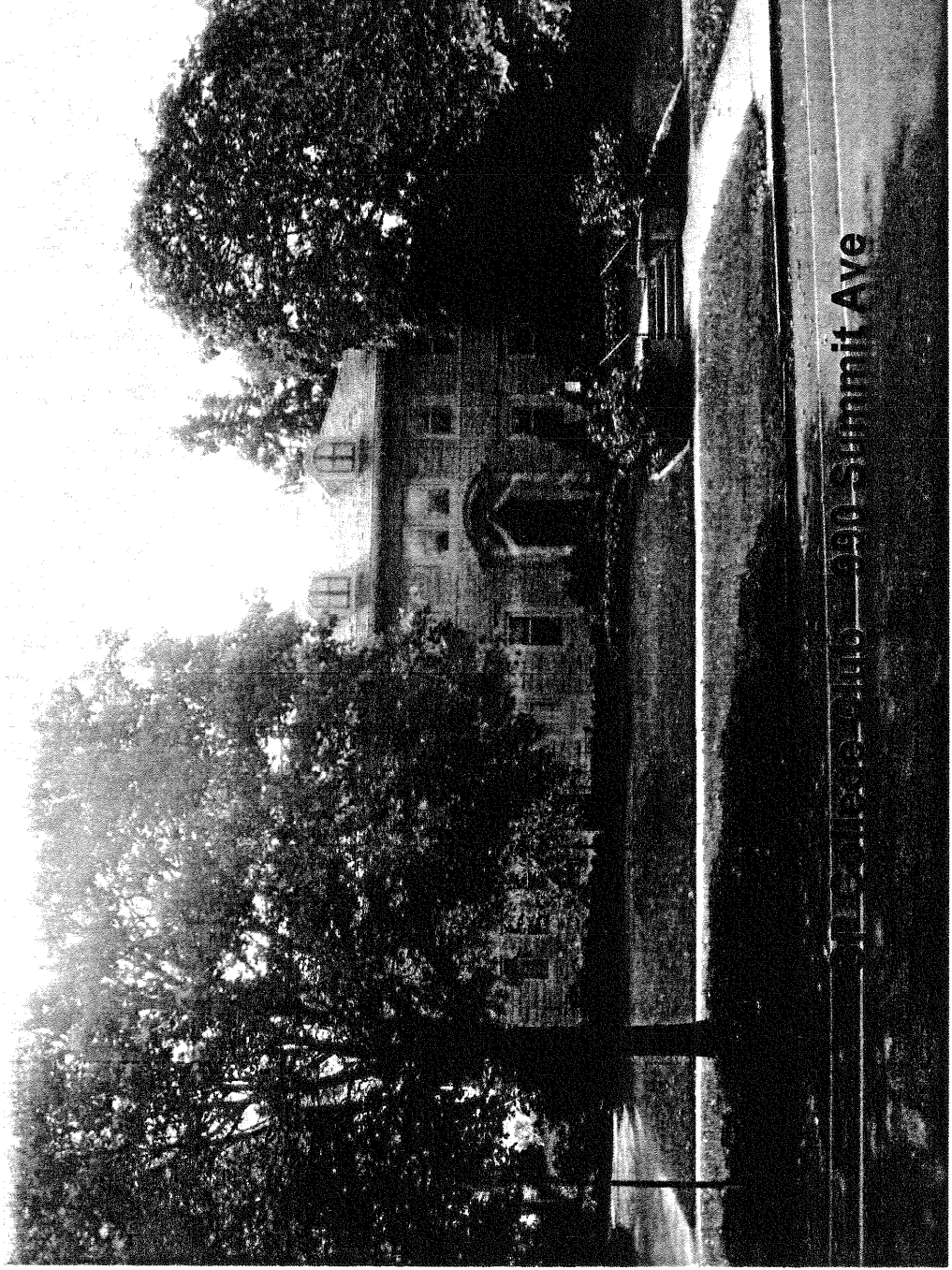
The council further finds the frequent parking of vehicles in this residential area by these nonresidential users has created residential problems of a safety, environmental and aesthetic nature.

Therefore to encourage reliance on car pools and mass transit, which is achieved by assuring convenient parking to residents who leave their cars at home during the day, to enhance the quality of life in residential areas by reducing noise, traffic hazards and litter, to reduce air pollution and other environmental factors of excessive automobile commuting, and **to preserve the safety of children and other pedestrians, and the residential area from the above-mentioned health and safety hazards, the council of the City of Saint Paul hereby establishes this residential Permit Parking Ordinance**

(Sections 166.11 through 166.18).

This is consistent with Title IV Section 168.

3. SP College Club – 990 Summit Ave
(5 off street parking spaces on their back driveway)



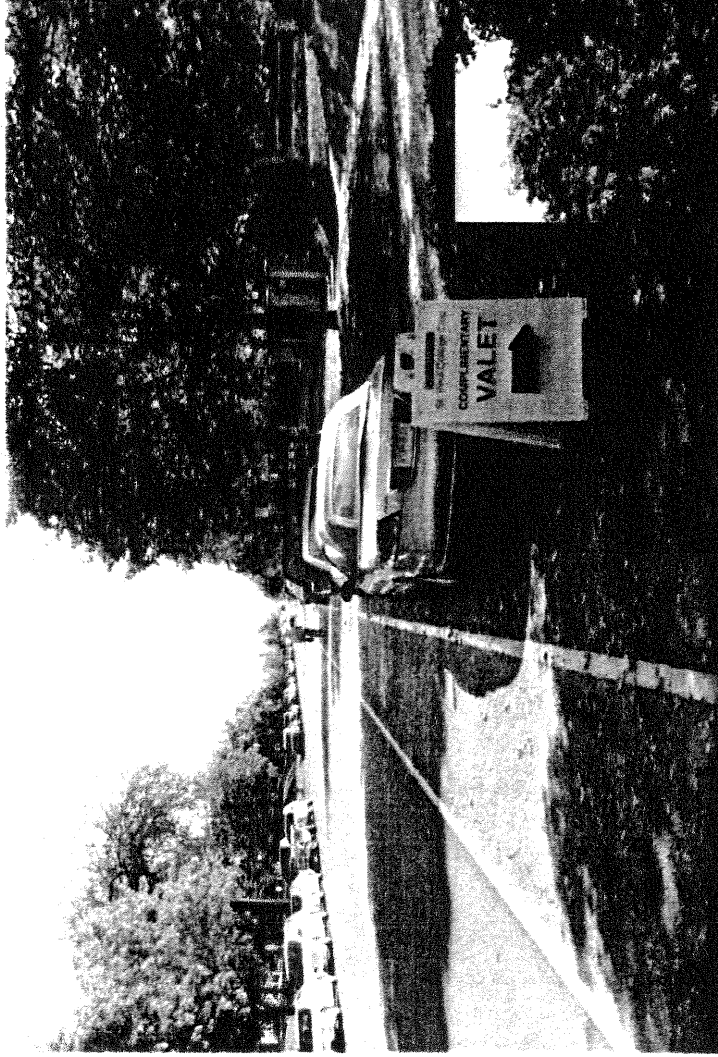
Residential Zoning

The College Club is a business that has many events both large and small. Their regular Tuesday meetings are a somewhat large event which results in many nonresidential users coming into the residential area. All of their other large events are on the weekend. Without any significant "off street" parking they contribute to the number of nonresidential users coming into the area. After Summit is full on their one block, they have always looked to Chatsworth for parking. With mainly the WM COL students but also the College Club nonresidential users resulted in excessive parking and hazardous traffic on the residential side street of Chatsworth, North of Summit Ave. Citizen petition and City study resulted in the block being designated "Area 3"

After "Area 3" was designated the College Club complained that it adversely effected them. The homeowners and neighbors then tried to help the College Club by suggesting alternatives that would facilitate their main need on Tuesdays but were met with resistance then refusal. The College Club just feels it should be "grandfathered" into using all of Chatsworth St as their parking lot.

Summit Ave has no parking restrictions and provides more than enough parking space to meet the College Clubs large events. These spaces exist on Summit from Milton to Lexington Ave. The valet parkers and guests prefer to park on the side street Chatsworth because it is slightly closer. **Many open parking spots from Oxford to Lexington go unused because the valet parker would have to travel an extra ½ to 1 block versus parking on Chatsworth.** With unused parking spots on unregulated Summit Ave, **there is no need to change Chatsworth Streets "Area 3" designation.** Any change would result in going back to the unsafe conditions we all agreed to solve. The City regulations and clear direction of keeping the residential streets safe and as a residential zoned area would be compromised.

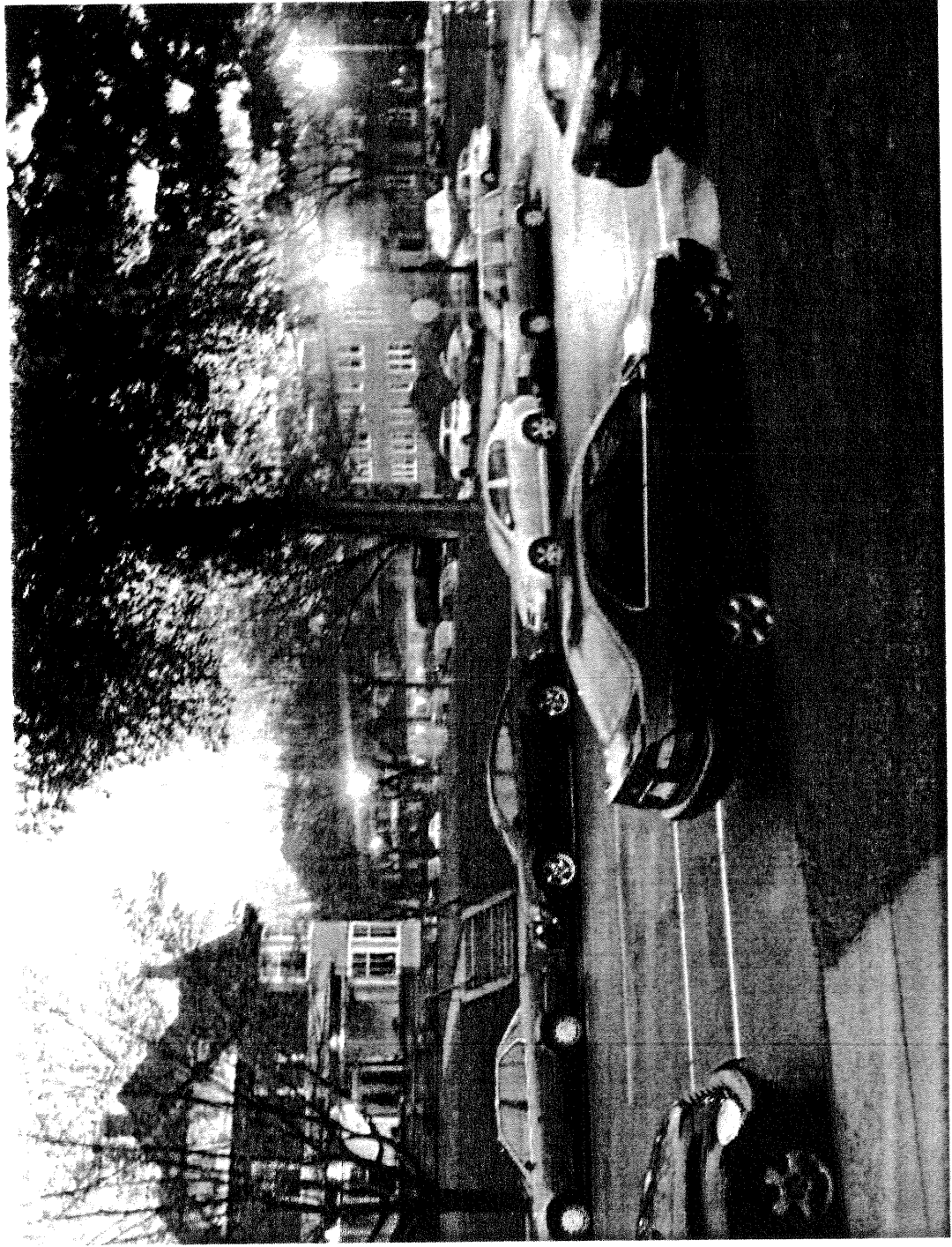
St Paul College Club uses free valet parking for their events. When Summit Ave fills up, the valet drivers used Chatsworth St next (sometimes first). This caused additional parking pressure on Chatsworth North



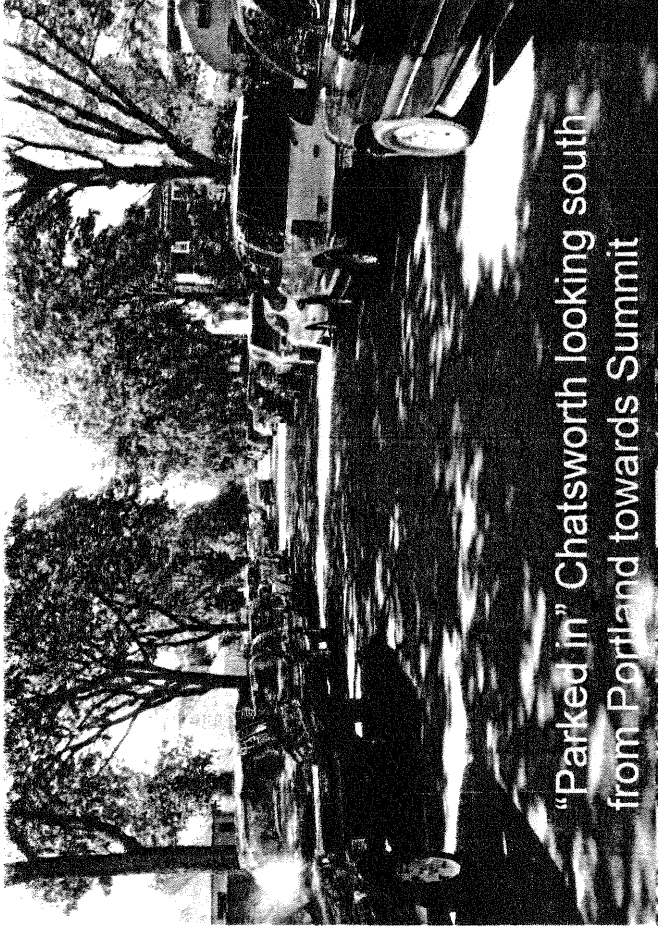
St Paul College Club does not provide sufficient "off street" parking. They were accustomed to using the side street, Chatsworth, for their valet parkers and nonresidential users.

Summit Ave in front of the College Club looking at Chatsworth St (Totally parked in).

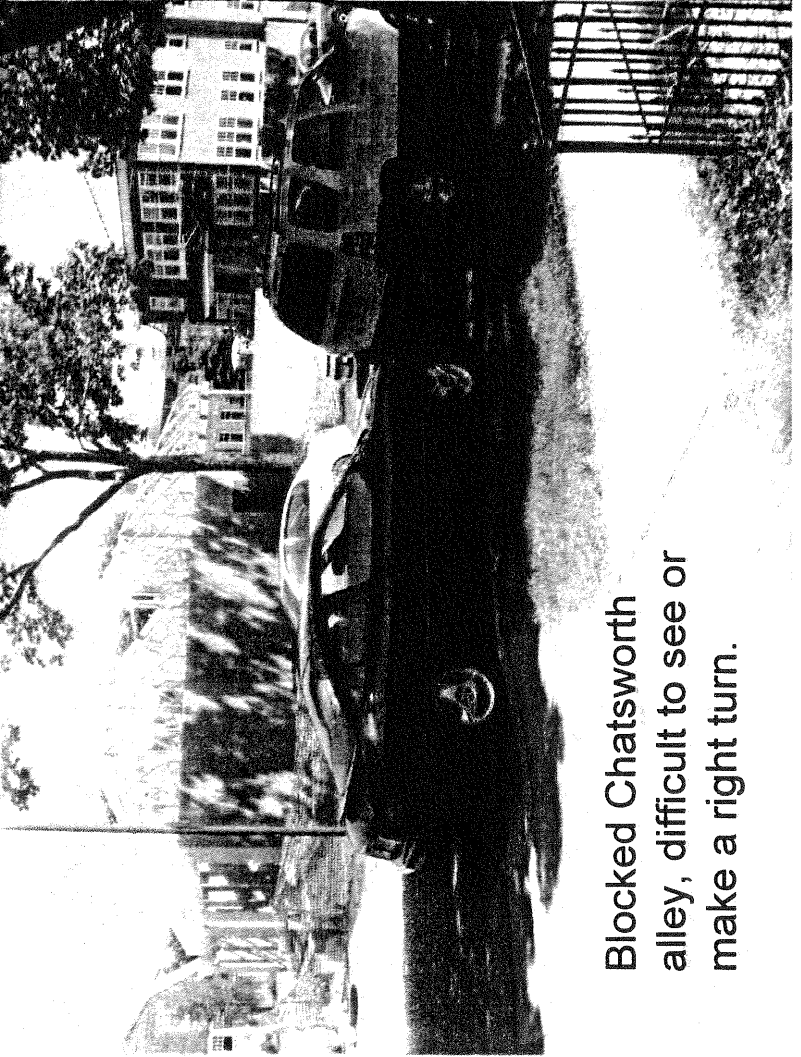
(All corners had cars parked in or within 20 ft of the crosswalks creating poor visibility and unsafe conditions).



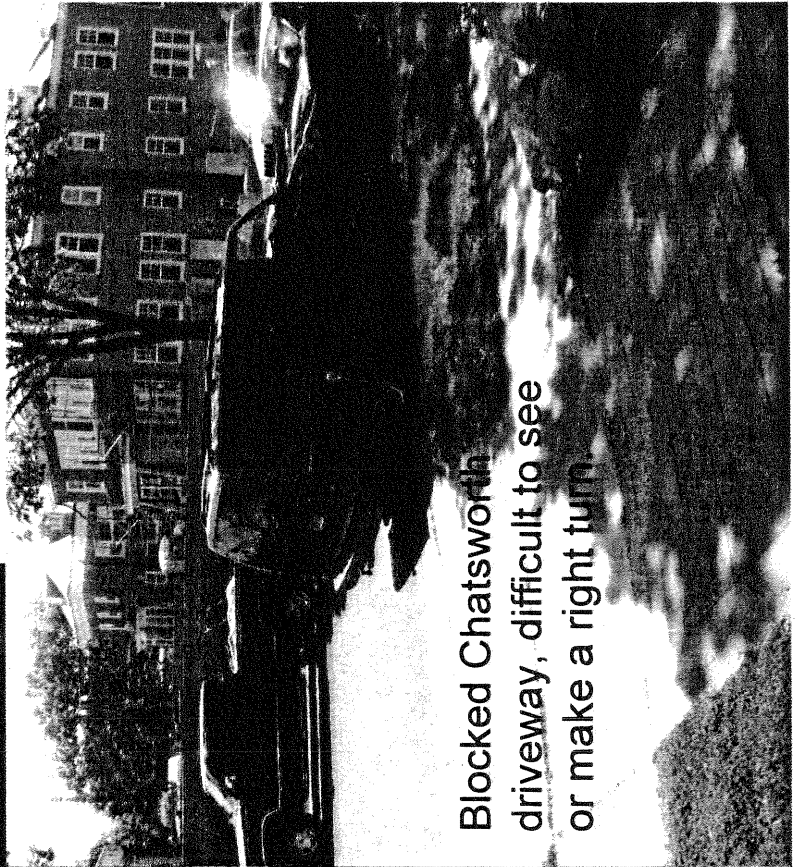
Examples of nonresidential users parking congestion and unsafe visibility contributing to hazardous conditions. Other hazardous condition is the speed of valet drivers and delivery vehicles in this reduced visibility area.



Pictures of Chatsworth St from Summit to Portland.

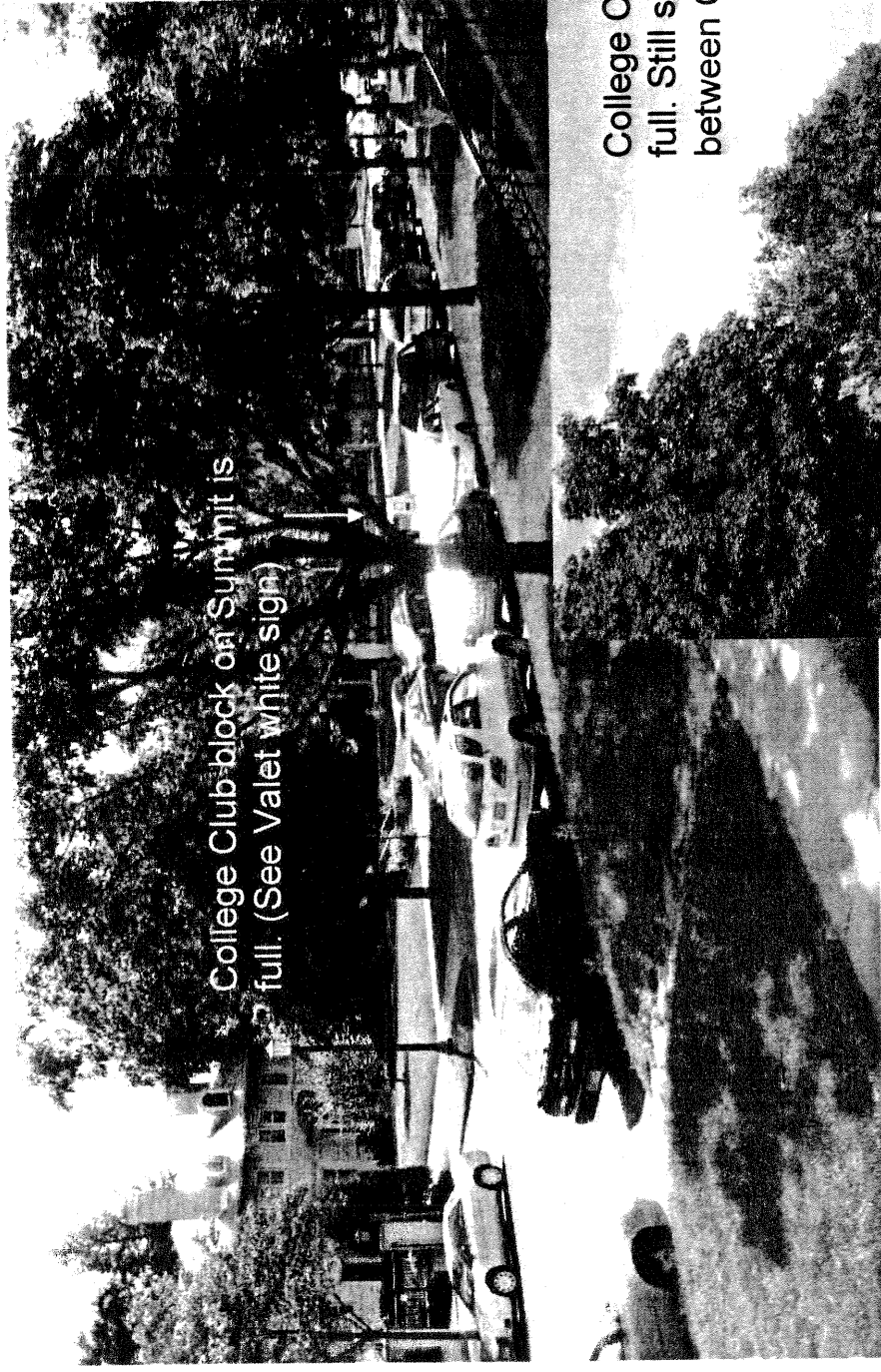


Blocked Chatsworth alley, difficult to see or make a right turn.

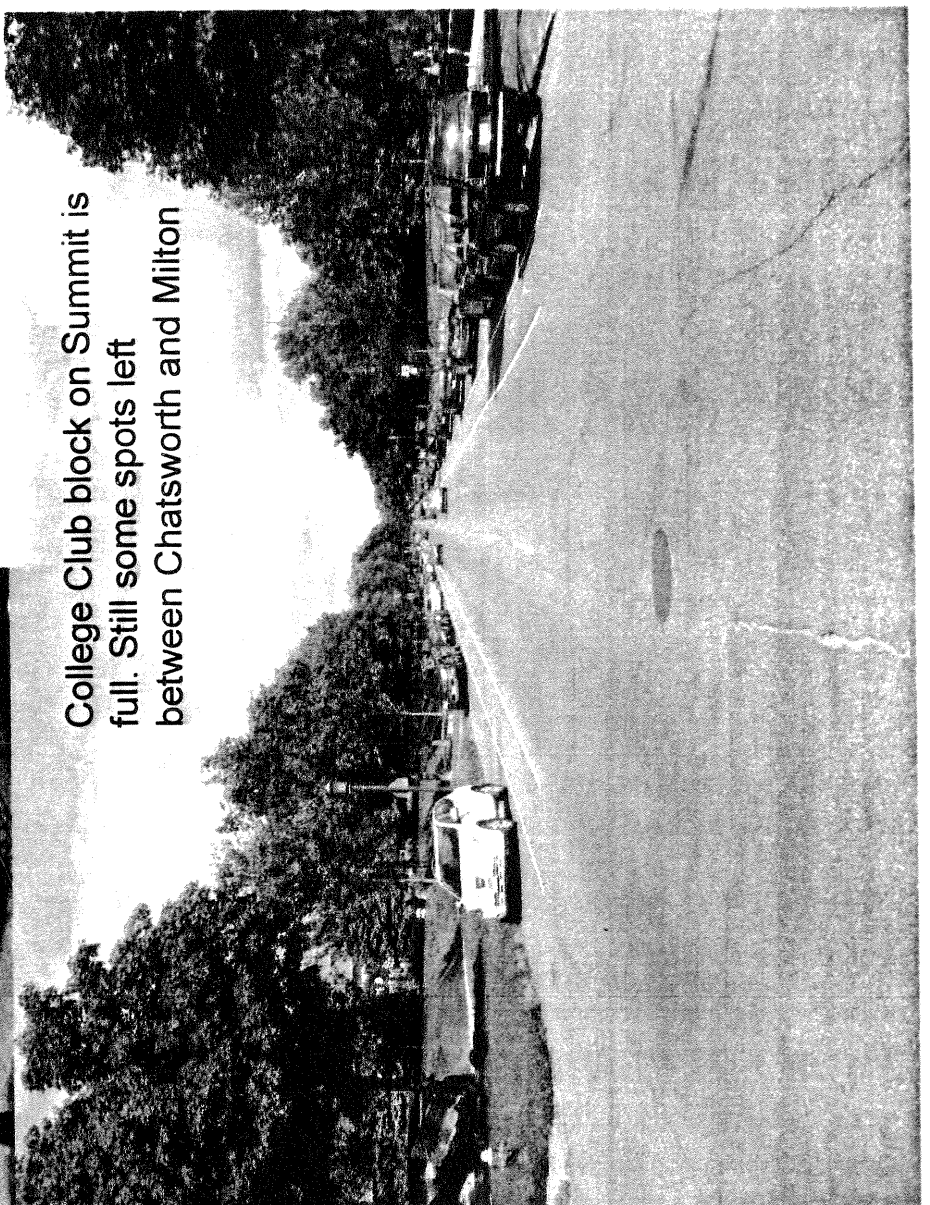


Blocked Chatsworth driveway, difficult to see or make a right turn.

**August 11, 2011
College Club event
equivalent to Tuesday
meetings. Pictures
taken just before end
of the event.**

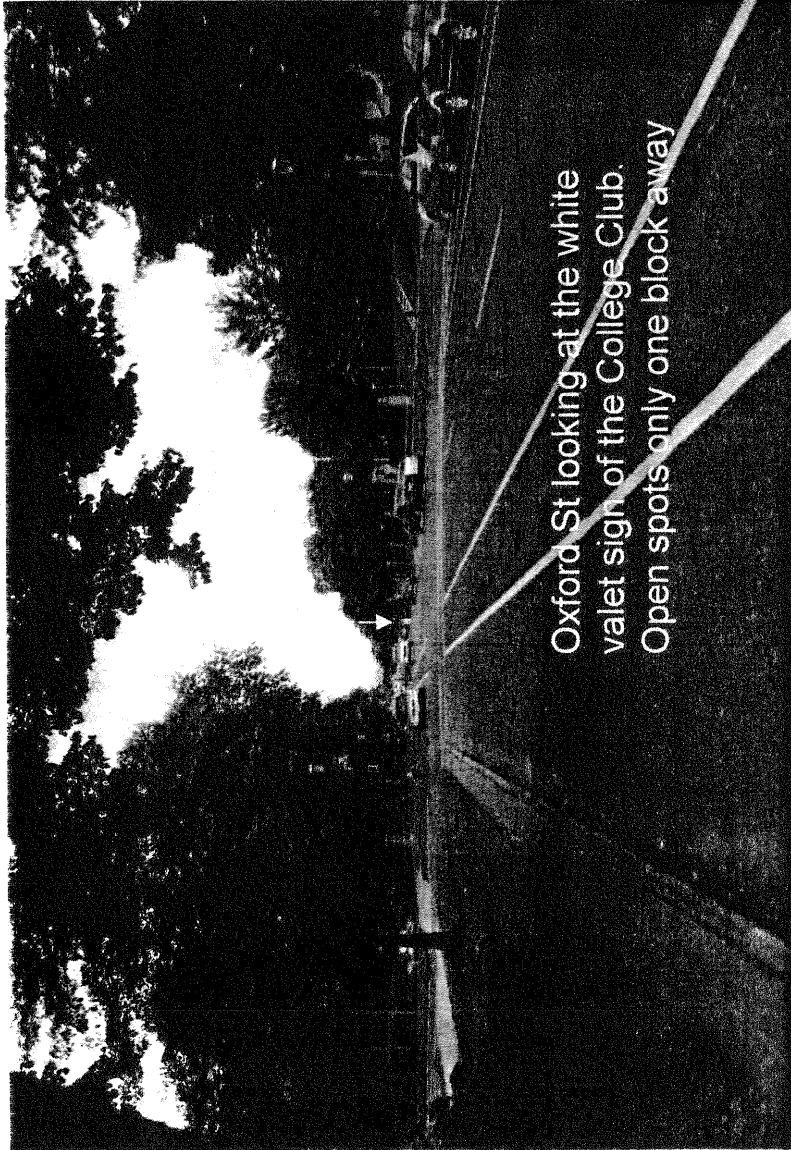


College Club block on Summit is full. (See Valet white sign)



College Club block on Summit is full. Still some spots left between Chatsworth and Milton

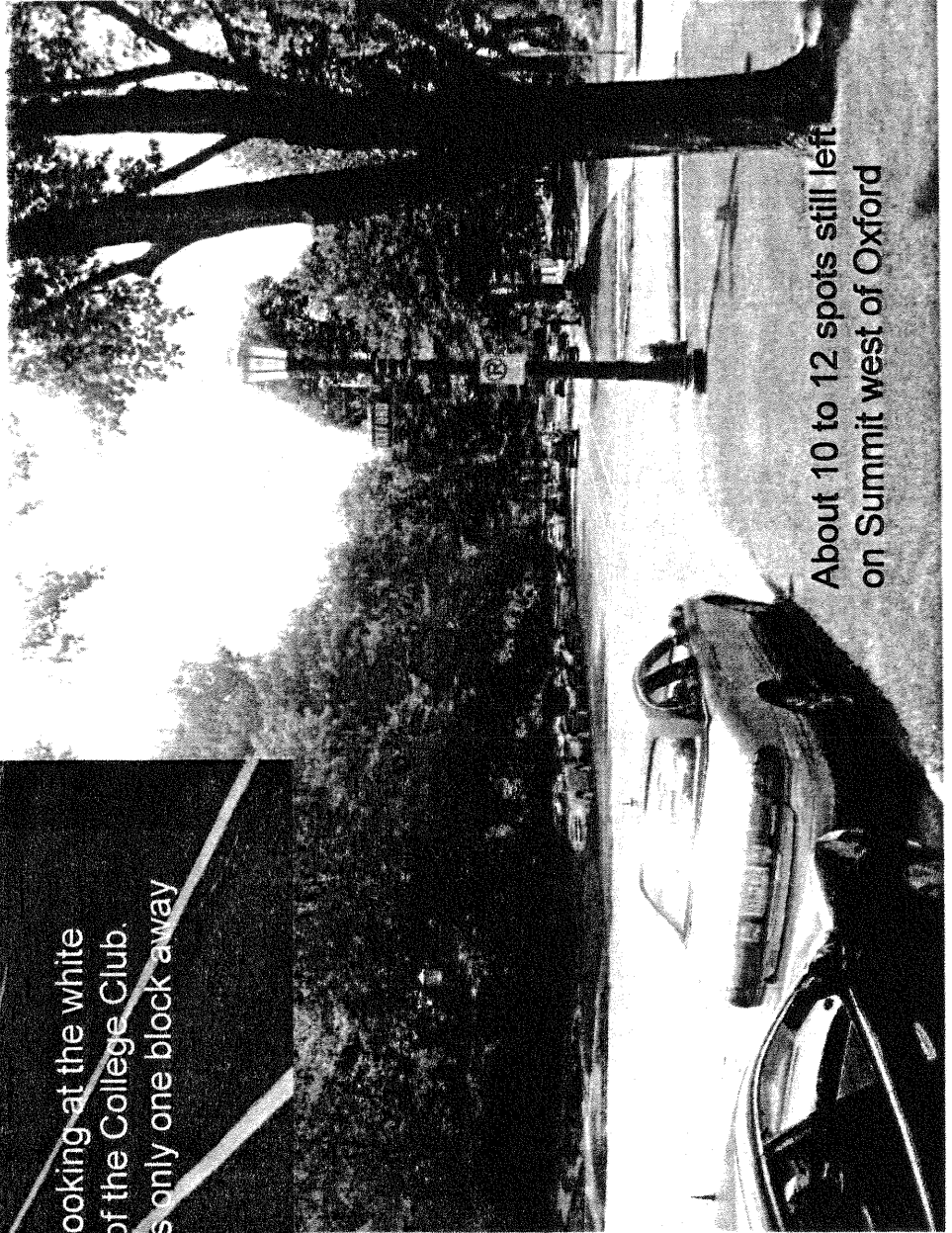
**August 11, 2011
College Club event
equivalent to Tuesday
meetings.**



Oxford St looking at the white
valet sign of the College Club.
Open spots only one block away

**There is sufficient
parking for even the
largest College Club
events on Summit
Ave.**

**There's no need to
turn the residents into a
side streets into a
business parking lot.**



About 10 to 12 spots still left
on Summit west of Oxford

Chatsworth St “Area 3” Permit Parking Summary

- The City of St Paul has designated selected residential neighborhoods for protection from excessive congestion and hazardous traffic and to preserve the character of those districts as residential districts for the safety of its citizens by restricting intense nonresident users (Title IV – Parking, Section 168).
- The City has identified the Wm Mitchell COL area as having excessive congestion and hazardous traffic. The residential streets in close proximity to WM COL have been designated as restricted parking. This has had the desired effect of increasing citizen safety and preserving the residential district from nonresident users excessive congestion. (Title IV Parking, Section 166.11).
- Chatsworth St from Summit to Portland was identified as a residential side street effected by the WM COL excessive congestion. The “Area 3” permitting was extended to Chatsworth and has had the desired effect of returning it to a safer environment and residential district, side street.
- The College Club at 990 Summit Ave has complained that with Chatsworth’s parking restriction they are inconvenienced. Their valet parkers and nonresidential guests can no longer use this residential side street as their parking lot.
- Summit Ave (where they’re located) is unrestricted, and many parking spaces go unused (Summit between Milton and Lexington) even during their busiest events. There is sufficient parking available to them on Summit, especially west of Oxford, but they the don’t want to walk one block and would prefer to use the residential street since it is slightly closer.
- The pressure felt by the College Club is exacerbated by the fact that they don’t have sufficient “off street” parking for their business. This results in a large number of nonresident users. Their valet parkers and guests have been accustomed to using Chatsworth as their parking lot. Along with WM COL parkers, this has turned Chatsworth into a congested and hazardous side street (see picture).
- The College Clubs busiest day is Tuesdays due to their regular weekly meetings. The neighborhood group suggested alternatives to help the College Club recover some of the parking on Chatsworth, but the College Club refused to discuss any compromises.
- The neighborhood groups simple suggestion of **covering the signs on one side of the street on Tuesdays** meets all needs and is the fairest solution. In spite of the College Clubs refusal to compromise with the neighbors, we still tried to provide them with a fair solution. They actually should not be allowed to return this residential side street into their business parking lot. Keep it RESIDENTIAL.
- Even though sufficient parking is available on unregulated Summit Ave for the College Clubs needs, the homeowners and residents bordering Chatsworth still feel **Tuesday “sign bags”** is a fair compromise and the lowest cost alternative.. **Please approve this solution.**

Request of the St Paul City Council

The neighborhood group asks the City Council to honor the City Municipal Code, Title IV, Section 168 and 166, by **keeping the block of Chatsworth between Summit and Portland an "Area 3" permitted area on both sides of the street.** Being an "Area 3" zone has solved the problem of severe nonresidential use which had caused unsafe and hazardous conditions on this residential side street. There is no need to change the streets "Area 3" designation since sufficient parking is available on unrestricted Summit Ave.

In the spirit of being good neighbors, we would like to further request that the City **allow the College Club to use "sign bags" to cover the No Parking – Area 3 signs on the east side of this Chatsworth block, on Tuesdays.** This will help alleviate what they claim is a long way for their valet parkers to have to walk.

Please help protect your citizens by not changing the permitting on this block and having it revert to unsafe and hazardous conditions.

Thank you.