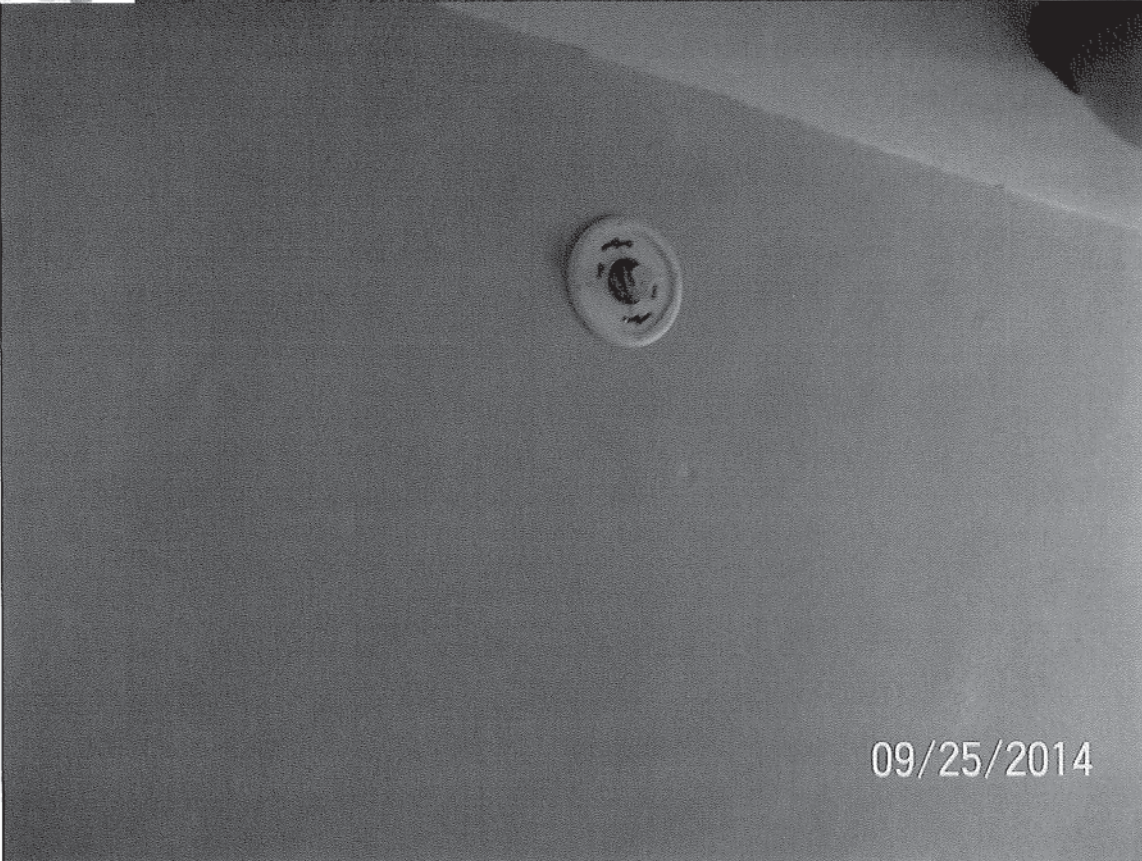


Date: November 12, 2014
File #: 13 - 219455
Folder Name: 278 BAKER ST E
PIN: 082822420024



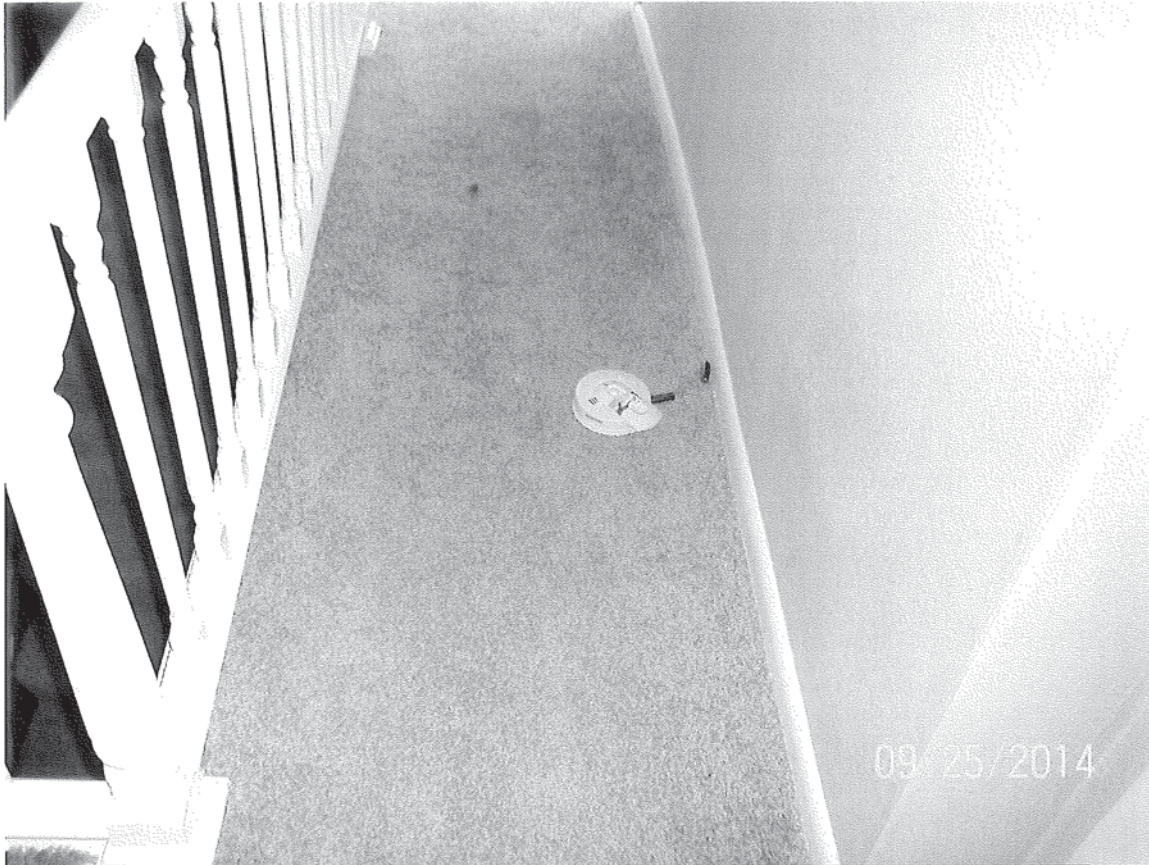
Slope
3/2
Ceiling
6' 3/4"

2ND FLOOR
NORTH BEDROOM



2ND FLOOR
HARDWIRED SD/CO
COMBO
NOT ATTACHED
LYING ON 2ND
FLOOR HALLWAY
FLOOR.

Date: November 12, 2014
File #: 13 - 219455
Folder Name: 278 BAKER ST E
PIN: 082822420024

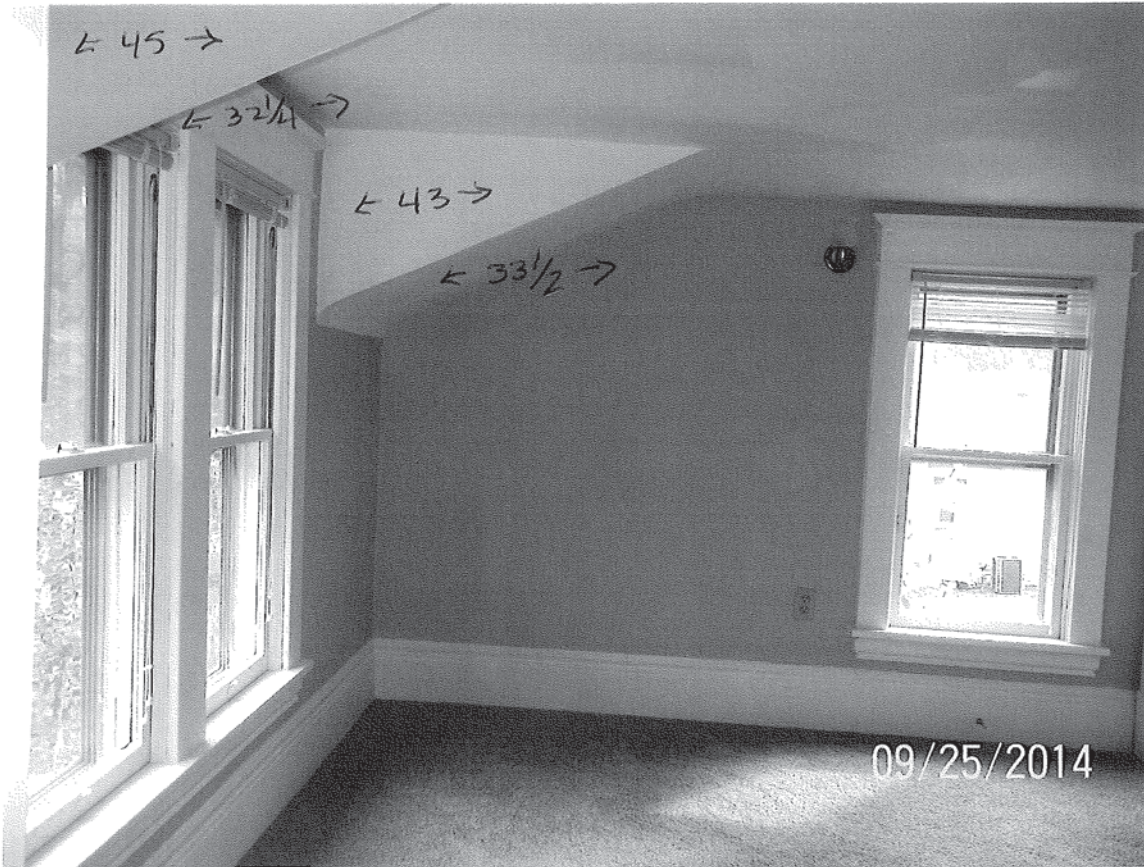


2ND FLOOR
COMBO DETECTOR
BATTERIES ON FLOOR
AND NOT MOUNTED



2ND FLOOR NORTHEAST
BEDROOM

Date: November 12, 2014
File #: 13 - 219455
Folder Name: 278 BAKER ST E
PIN: 082822420024

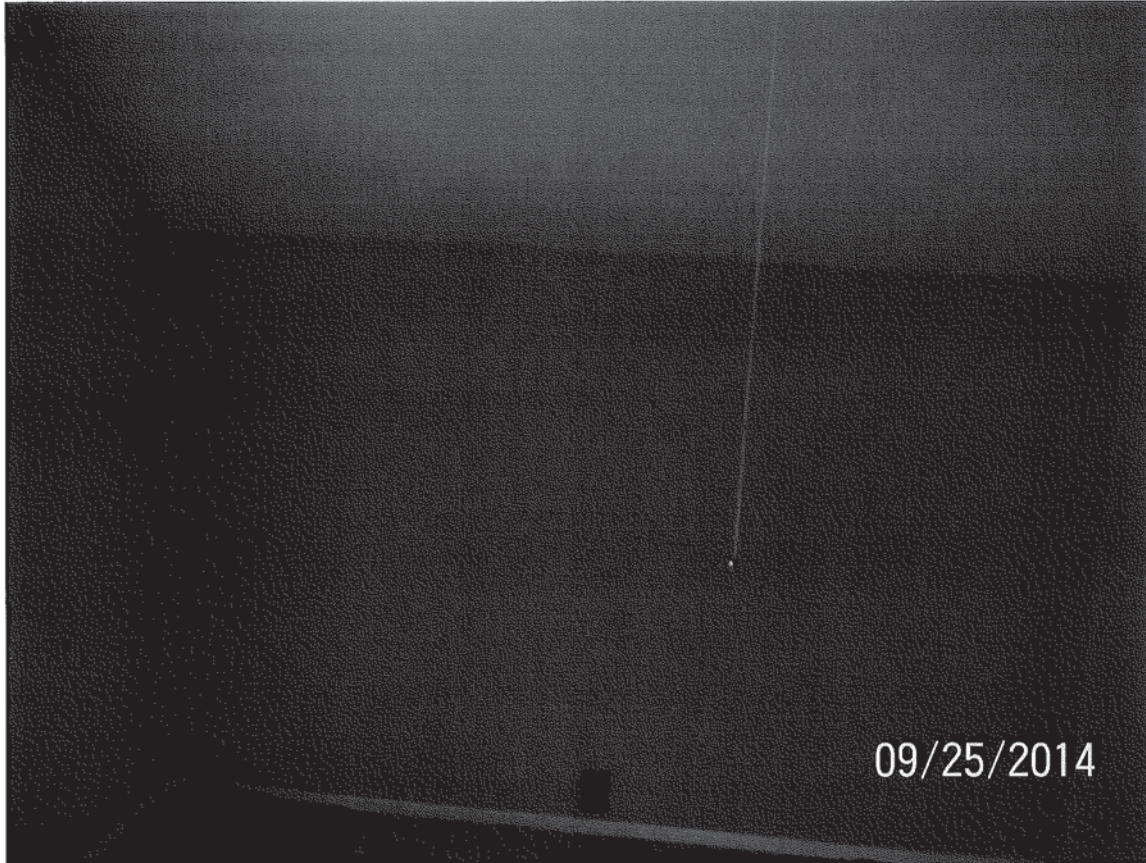


2ND FLOOR
NORTHEAST
BEDROOM
- 112 1/2 x 138
FLOOR SPACE
- CEILING
6'6"



2ND FLOOR
NORTHEAST BEDROOM
- Lip 4 1/2
- OR 5'11 1/2"

Date: November 12, 2014
File #: 13 - 219455
Folder Name: 278 BAKER ST E
PIN: 082822420024



09/25/2014

2ND FLOOR
SOUTHWEST
BEDROOM



09/25/2014

2ND FLOOR
NORTH BEDROOM

$12\frac{1}{4}$ ← $24\frac{1}{2}$ →

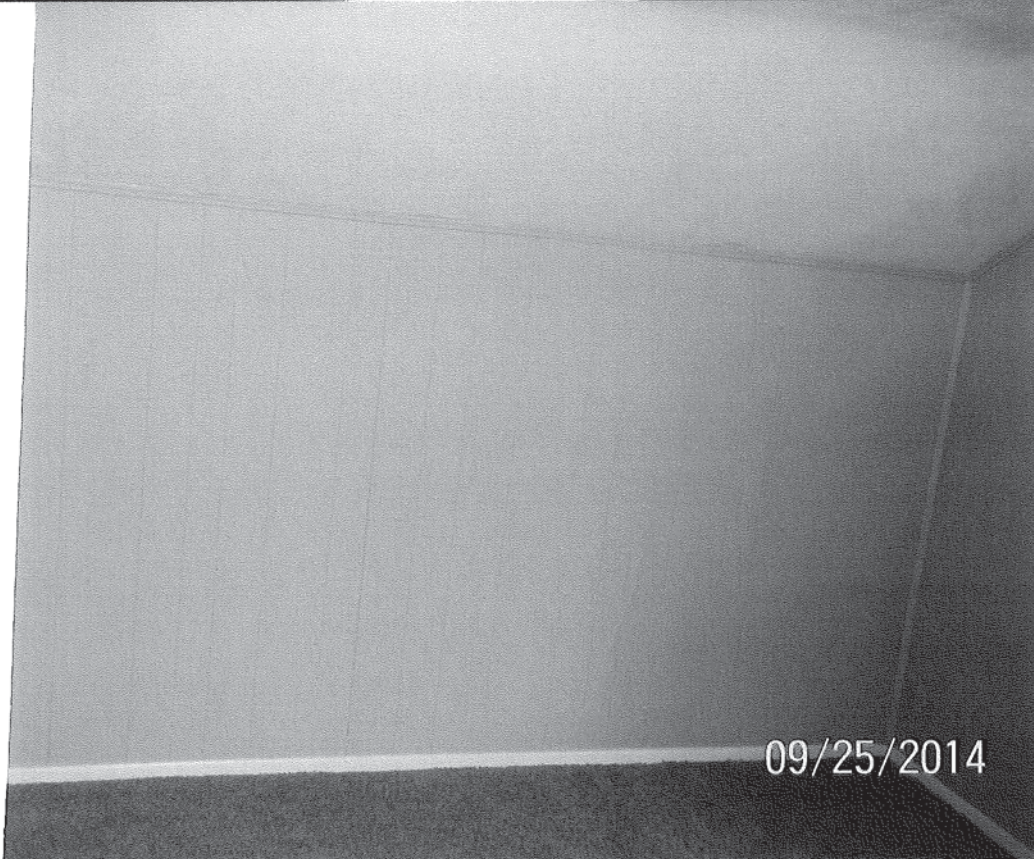
- CEILING
6' 10"
10' 1" X 13' 2"
FLOOR
SPACE

Date: November 12, 2014
File #: 13 - 219455
Folder Name: 278 BAKER ST E
PIN: 082822420024



Slope
6" Ceiling
6 3/4"

2ND FLOOR
NORTH BEDROOM

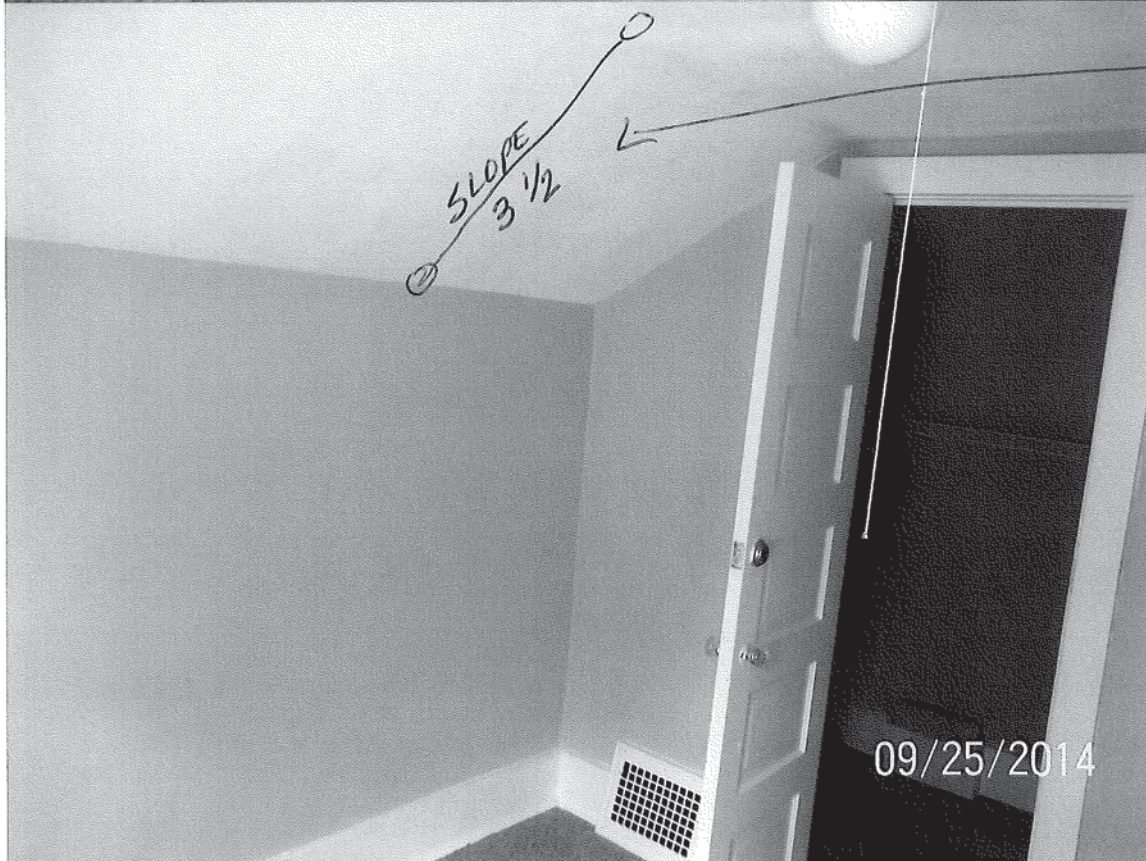


2ND FLOOR
SOUTHWEST
BEDROOM
WEST WALL
&
CEILING Slope

Date: November 12, 2014
File #: 13 - 219455
Folder Name: 278 BAKER ST E
PIN: 082822420024



2ND FLOOR
BATHROOM



SLOPE
6 1/2 CEILING

2ND FLOOR
← Southwest
BEDROOM

Date: November 12, 2014
File #: 13 - 219455
Folder Name: 278 BAKER ST E
PIN: 082822420024



2ND FLOOR
SOUTHWEST
BEDROOM



2ND FLOOR
SOUTHWEST
BEDROOM

Date: November 12, 2014
File #: 13 - 219455
Folder Name: 278 BAKER ST E
PIN: 082822420024



2ND FLOOR
SOUTHWEST
BEDROOM

09/25/2014



2ND FLOOR
BATHROOM
UNFINISHED

09/25/2014

Date: November 12, 2014
File #: 13 - 219455
Folder Name: 278 BAKER ST E
PIN: 082822420024



2nd FLOOR
BATHROOM
UNFINISHED

278 BAKER ST E. 2ND FLOOR

