

DO NOT REACH AROUND
SHAFT END OF MOTOR
WHEN IN OPERATION.
ROTATING FAN MAY
CAUSE INJURY.

ROTATION
325811-201 REV. A

HAND WASH | LINGER
2. SELECT CYCLE Choose more time for heavily soiled loads and less time for lightly soiled loads.
3. PULL TIMER TO START Lid must be closed to complete cycle. PUSH TIMER TO STOP

FOR BEST STAIN REMOVAL RESULTS

Antiperspirants, Deodorants
Treat with a paste of ammonia and color-safe bleach. Let stand for 30 minutes. Wash in hottest water safe for fabric.

Blood
Rinse immediately or soak in cold water with detergent for 30 minutes. Rinse. Rub detergent into any remaining stains. Rinse thoroughly. Wash.

Cream, Milk, Ice Cream
Sponge immediately or apply a prewash soil and stain remover. Rinse. Wash. Repeat if necessary. If stain remains, soak. Wash drops of liquid detergent. Rinse. If stain remains, soak. Wash.

Grass
Use an enzyme presoak or rub enzyme detergent on the stain. Launder with detergent and bleach appropriate for the fabric.

Ketchup, Tomato Products
Sponge immediately or apply a prewash soil and stain remover. Rinse. Wash. If stain remains, apply a liquid detergent to stain or soak in warm water with detergent. Rewash.

Mud
Brush off the dry mud. Rinse under cold water. Pretreat with a paste of detergent and water. Launder using detergent and bleach safe for the fabric.

• Call 1-800-4 MY HOME to schedule Sears Repair Service.
• Replace inlet hoses every 5 years.
• For French or Spanish instructions, see owners manual.
• Pour les instructions en français, voir le manuel de propriétaire.
• Para obtener las instrucciones en español, véase el Manual del Propietario.

MINIMUM INSTALLATION CLEARANCES

Recess or Closet	1 in.	Closet with Door
4 in. - washer to rear wall	18 in.	washer to door
6 in. - washer to side wall	48 in.	top vent
19 in. - washer top to shelf	28 in.	bottom vent

See installation instructions for details.

WARNING Fire Hazard Never place items in the washer that are dampened with gasoline or other flammable fluids. No washer can completely remove oil. Do not dry anything that has ever had any type of oil on it (including cooking oils). Doing so can result in death, explosion, or fire.	AVERTISSEMENT Risque d'incendie Ne jamais mettre des articles humectés d'essence ou d'autres fluides inflammables dans la laveuse. Aucune laveuse ne peut complètement enlever l'huile. Ne pas faire sécher des articles qui ont été souillés par tout genre d'huile (y compris les huiles de cuisson). Le non-respect de ces instructions peut causer un décès, une explosion, ou un incendie.	ADVERTENCIA Peligro de incendio Nunca coloque en la lavadora artículos que estén humedecidos con gasolina o cualquier otro líquido inflamable. Ninguna lavadora puede eliminar completamente el aceite. No seque ningún artículo que haya estado alguna vez contaminado por aceite (incluyendo aceites de cocina). No seguir estas instrucciones puede ocasionar la muerte, explosión o incendio.
---	---	---



...ED WITH A P...
...CT OVERHEAT...
... CAN RESULT FROM...
... SUPPLY...
... THE LIMIT OF...
... A QUALIFIED TECH...
... DIRECT THE...
... 201...

8303 5

DO NOT REACH AROUND
SHAFT END OF MOTOR
WHEN IN OPERATION
ROTATING FAN MAY
CAUSE INJURY.

ROTATION
20811-001 REV. A

THIS EQUIPMENT IS EQUIPPED WITH A PROTECTIVE
DEVICE TO PREVENT OVERHEATING OF THE
MOTOR. IN THE EVENT OF OVERHEATING, THE
DEVICE WILL SHUT OFF THE MOTOR TO PREVENT
OVERHEATING. THE USER SHOULD REFER TO THE
OPERATING INSTRUCTIONS FOR THE LIST OF
CAUSES AND REMEDIES.

8303 5
MODEL NO. 648A-X
PIN 001273 702
45 AMP
TUTLET PREG. 3.2 W.C.

SAFETY
CONTROL

20811-001 REV. A

PLEASE TO READ
AND FOLLOW
INSTRUCTIONS ON
THE LADDER MAY
RESULT IN DEATH
OR INJURY.



SmartShield
SENSITIVE

ENERGYGUIDE
Model: PG477584900
415028

Compare the Energy Use of this Water Heater
Before You Buy.

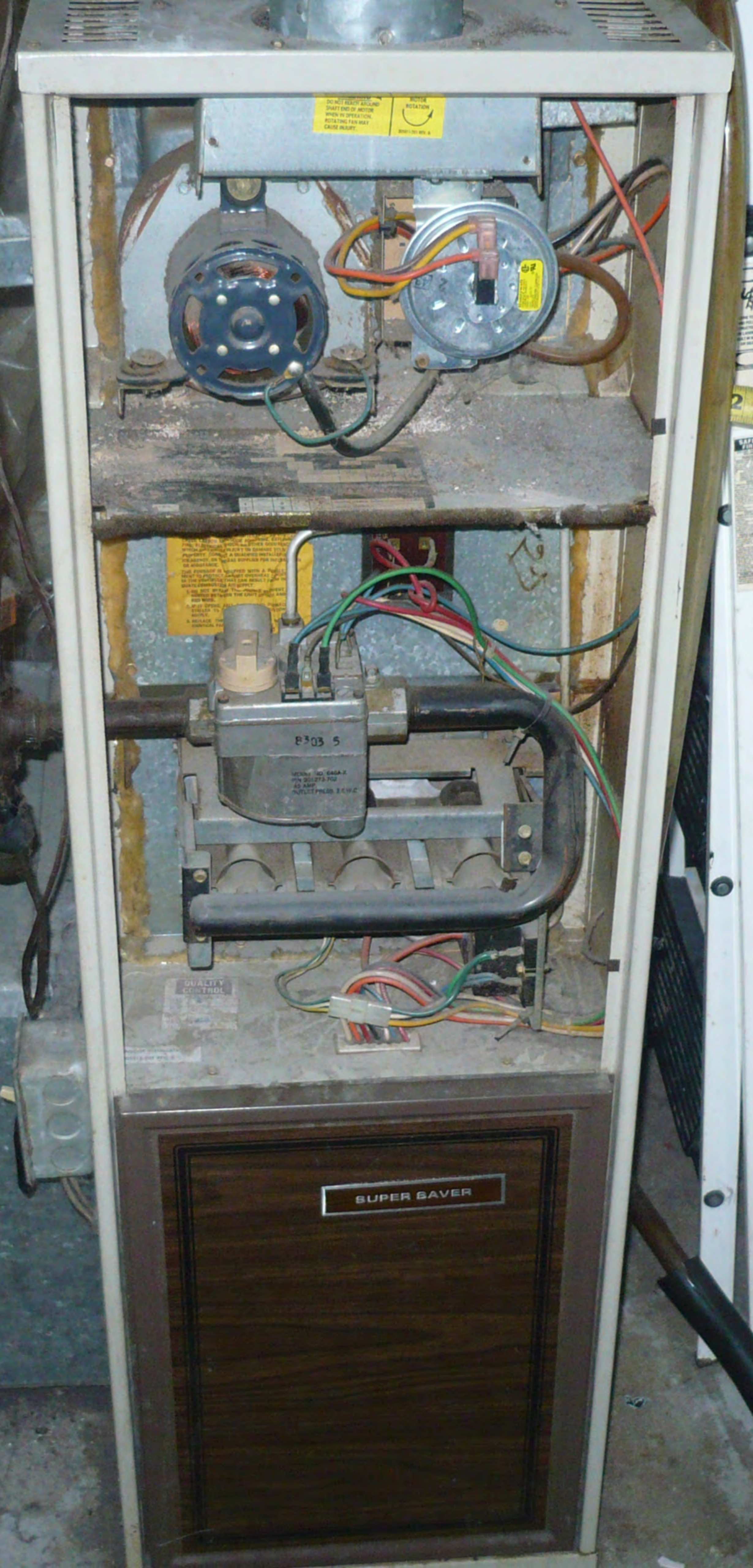
This Model Uses
254 therms/year

Use Most Energy
258

281

2004 U.S. Government national average cost of \$ 91 per
natural gas. Your actual operating cost will vary
on your local utility rates and your use of the product.

ASHRAE Requirements



FOR THE STAIN REMOVAL EXPERT

Antibacterial Disinfectant: Chlorox bleach for heavily soiled loads and use for lights, toilet seats, etc. Chlorox bleach for heavily soiled loads and use for lights, toilet seats, etc. Chlorox bleach for heavily soiled loads and use for lights, toilet seats, etc. Chlorox bleach for heavily soiled loads and use for lights, toilet seats, etc. Chlorox bleach for heavily soiled loads and use for lights, toilet seats, etc.

WARNING / **AVERTISSEMENT** / **ADVERTENCIA**

Fire Hazard: Repair only parts in the burner area. Do not attempt to repair or adjust the burner assembly. Do not attempt to repair or adjust the burner assembly. Do not attempt to repair or adjust the burner assembly. Do not attempt to repair or adjust the burner assembly. Do not attempt to repair or adjust the burner assembly.



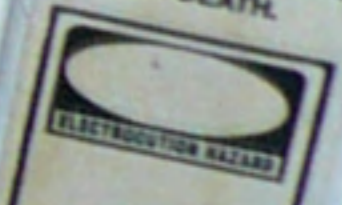
SAFETY

DO NOT ATTEMPT TO REPAIR OR ATTEMPT TO REPAIR THIS UNIT. CALL A QUALIFIED SERVICE PERSONNEL FOR REPAIRS.

SUPER SAVER



FAILURE TO READ AND FOLLOW INSTRUCTIONS ON THIS LADDER MAY RESULT IN INJURIES OR DEATH.



WATCH FOR WIRES THIS LADDER CONDUCTS ELECTRICITY

SAFETY FIRST

PROPER SELECTION
Read and follow the instructions on the label attached to the ladder.
PROPER USE
This ladder is designed for use as a step ladder. Do not use it as a platform or extension ladder.
PROPER CARE
Inspect the ladder before each use. Do not use if damaged or if the ladder is not in good condition.
SAFETY
Do not use the ladder on uneven or slippery surfaces. Do not use the ladder if you are under the influence of alcohol or drugs. Do not use the ladder if you are wearing shoes with slippery soles. Do not use the ladder if you are carrying heavy loads. Do not use the ladder if you are standing on the top step. Do not use the ladder if you are leaning against it. Do not use the ladder if you are pulling or pushing against it. Do not use the ladder if you are climbing or descending it. Do not use the ladder if you are using it as a step.

SHIELD
Water Treatment

...TEMPERATURE...
...WHICH CAN RESULT IN SERIOUS INJURY...
...HEALTH AND/OR SEVERE PROPERTY DAMAGE...
...occurs, CALL A PLUMBER IMMEDIATELY...
...may indicate that an unsafe temperature or...
...condition exists which requires immediate...
...by a qualified service technician or licensed...
...contractor...
...WATER HEATER INSTRUCTION MANUAL FOR...
...ADDITIONAL INFORMATION REGARDING THE...
...TEMPERATURE AND PRESSURE RELIEF VALVE...
...See other side for important information.

KITZ
1/2-600
JAPAN

SHAFT END OF MOTOR
WHEN IN OPERATION,
ROTATING FAN MAY
CAUSE INJURY.
ROTATION
205811-201 REV. A

H18-A1A007
Spec. Electronics Corp.
MODEL 990-490
D2
SS1
E801

SHUT DOWN!
TURN TO LOWEST
SETTING ON GAS CONTROL
VALVE

TOP	SIDE	BACK	FRONT	WHEN USING SINGLE WALL VENT
1	1	0	0	1
1	0	0	1	1

WHEN USING 11" VENT

8303 5

QUALITY
CONTROL