

Marshall Avenue Medians

Existing conditions are unsafe for bicyclists.

Raised medians do not leave sufficient space for motorists or bicyclists to take evasive action when necessary.

Medians have made the roadway too narrow for wise vehicles to legally pass bicyclists who are using the bicycle lane.

This is true all year, but especially problematic in winter, when the road is narrower due to snow accumulation.

Current Conditions (Today)

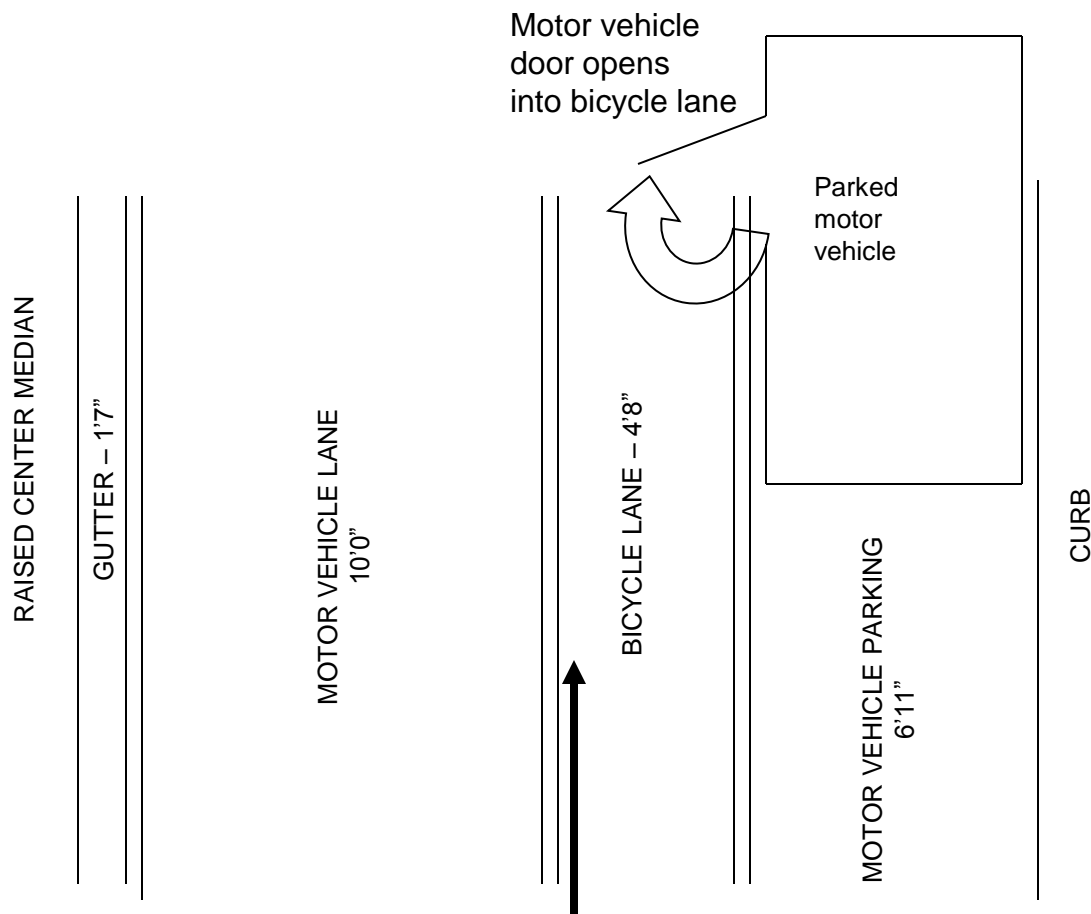


No median – bicycle lane is blocked – there is room for bicyclists to pass parked cars and room for moving vehicles to pass bicyclists.



With median – bicycle lane is blocked – bicyclists must use traffic lane to pass parked cars, but no room for moving vehicles to pass bicyclists.

Actual Dimensions of Roadway Elements on Marshall Avenue



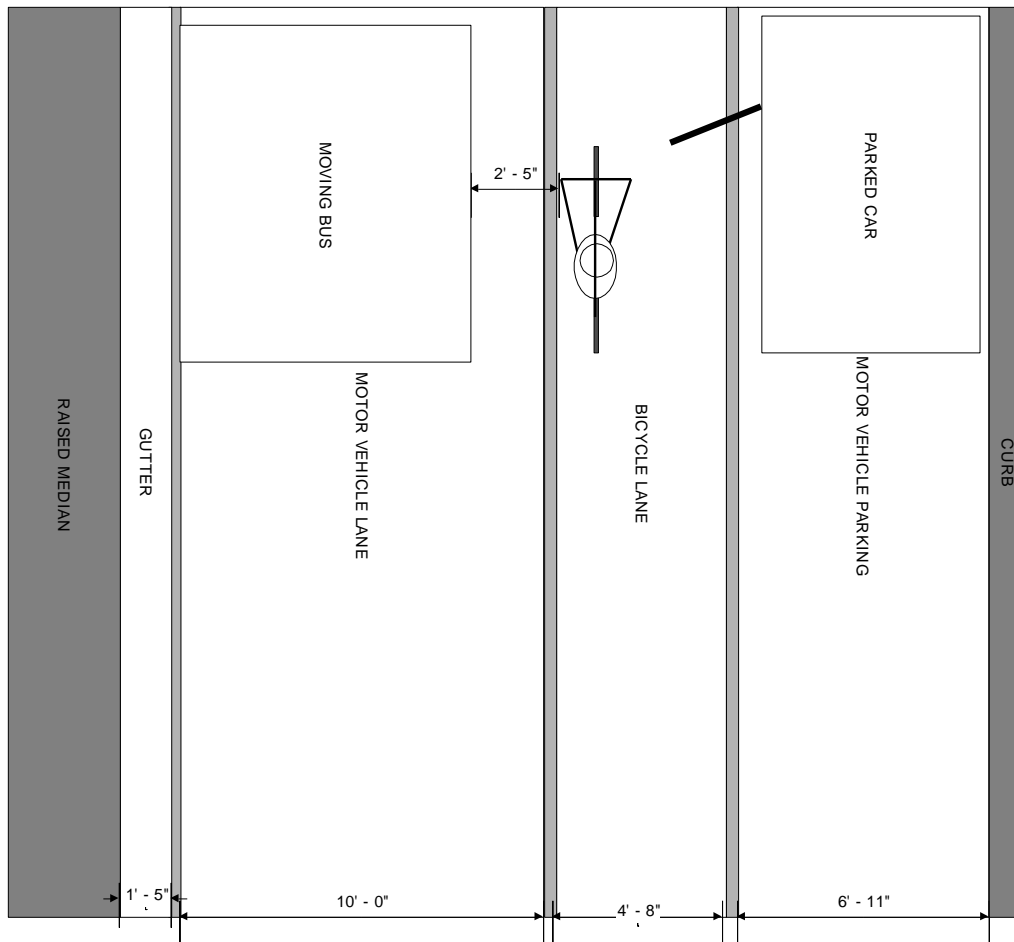
Stripes are 4 inches wide.

Correct position of bicyclist in lane to avoid opening doors (per *Bicycling 101* safety training class sponsored by League of American Bicyclists)

Bicyclist must enter motor vehicle lane to avoid hitting or being hit by opening car doors in parking lane.

Motor vehicles must not pass a bicyclist any closer than 3 feet (MN state law). There is not enough room between the median and the bicyclist to allow wide vehicles (like trucks or buses) to legally pass bicyclists.

Dangerous Situation on Marshall



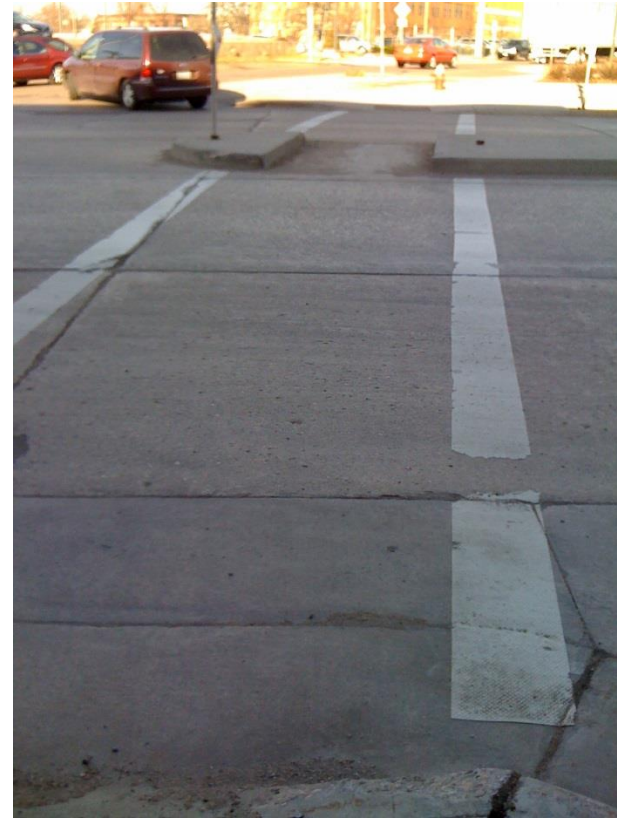
When a large vehicle, such as a school bus or a fire truck, approaches a bicyclist who is using the bike lane, there is not enough room for the vehicle to make a legal pass. 3 feet is required by Minnesota law.

During the CIB bus tour in 2011, the bus passed us while we were riding in the bike lane with only a few inches of clearance. Roads were clear at the time.

Safer Alternative Median Designs



Median on Selby east of Lexington Pkwy is painted on – provides space for bicyclists and motor vehicles to take evasive action when needed.



Small, raised median at crosswalk provides at-grade pass-through for ADA compliance, but is located only at intersection, not continuous.

No More Medians!

- Medians create unsafe conditions for bicyclists.
- Medians encourage illegal mid-block pedestrian crossings.
- Medians are anti-business – they block customer access to businesses, so customers go elsewhere.
- This project was not recommended for funding in the CIB process in both 2011 and 2013 because of safety concerns.